



Himachal Pradesh

Assembly Factbook™

Lahaul & Spiti Assembly Constituency



Key Electoral Data of Lahaul & Spiti
Assembly Constituency (Vidhan Sabha)

Himachal Pradesh
Assembly FactbookTM
Lahaul & Spiti Assembly Constituency



Lahaul & Spiti Vidhan Sabha

Editor & Director

Dr. R.K. Thukral

Research Editor

Dr. Shafeeq Rahman

Compiled, Researched and Published by Datanet India Pvt. Ltd.

D-100, 1st Floor,

Okhla Industrial Area, Phase-I,

New Delhi- 110020.

Ph.: 91-11- 43580781-84

Email : support@indiastatpublications.com

Website : www.indiastatelections.com

Online Book Store :

www.indiastatpublications.com

Report No. : AFB/HP-21-0125

ISBN : 978-93-5822-780-2

First Edition : January, 2018

Eighth Updated Edition : January, 2025

Price : Rs.11500/-

US\$ 310

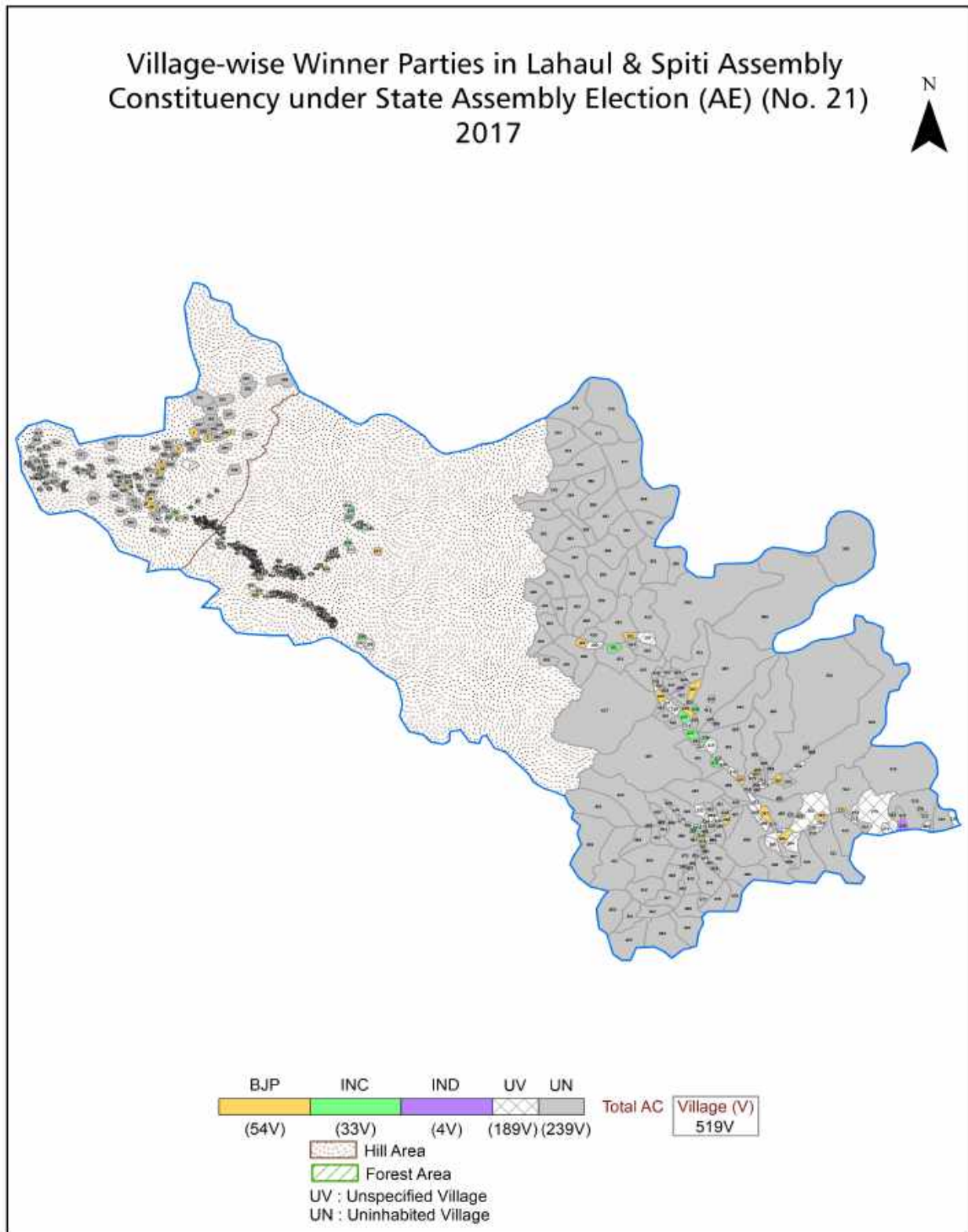
© **Datanet India Pvt. Ltd.**

All rights reserved. No part of this book may be reproduced, stored in a retrieval system or transmitted in any form or by any means, mechanical photocopying, photographing, scanning, recording or otherwise without the prior written permission of the publisher. Please refer to Disclaimer at page no. 144 for the use of this publication.

Printed in India

No.	Particulars	Page No.
	Introduction	
1	Assembly Constituency - (Vidhan Sabha) at a Glance Features of Assembly as per Delimitation Commission of India (2008)	1-2
	Location and Political Maps	
2	Location Map Boundaries of Assembly Constituency - (Vidhan Sabha) in District Boundaries of Assembly Constituency under Parliamentary Constituency - (Lok Sabha) Village-wise Winner Parties- 2024, 2022, 2019, 2017, 2014, 2012 and 2009	3-11
	Administrative Setup (2011)	
3	District Sub-district Towns Villages Inhabited Villages Uninhabited Villages Village Panchayat Intermediate Panchayat	12-28
	Demographics (2011)	
4	Population Households Rural/Urban Population Villages by Population Size Sex Ratio (Total & 0-6 Years) Religious Population Social Population Literacy Rate	29-30
	Electoral Features	
5	Important Dates of Last Elections Held Electors by Gender Service Electors Voters Voters Turnout Polling Stations & Average Number of Electors per Polling Station Electors by Age Group Present Elected Representatives	31-36
	Historical Summary Election Results	
6	Vote Share of Major Parties Winning Margin (Number & Percentage) Polarity of Parties Summary Result of Assembly Segment of Parliamentary Elections 2024, 2019, 2014, 2009, 2004 and 1999 Summary Result of Assembly Elections 2022, 2017, 2012, 2007, 2003, 1998, 1993, 1990, 1985, 1982, 1977, 1972 and 1967	37-58
	Polling Station Level Election Results	
7	Name and Number of Polling Station 2024, 2022, 2019, 2017, 2014, 2012 and 2009 Polling Station-wise Electors, Voters & Voters Turnout 2024, 2022, 2019, 2017, 2014, 2012 and 2009 Polling Station wise Elections Results 2024, 2022, 2019, 2017, 2014, 2012 and 2009	59-124
	Share of Assembly Constituency	
8	Share of Assembly Constituency - (Vidhan Sabha) in State, District and Parliamentary Constituency - (Lok Sabha)	125
	Socio-Economic Amenities (2011)	
9	Access to Administrative Units Agricultural, Manufacturing and Industrial Commodities Demographic Indicators Education Health & Manpower Drinking Water Supply Sanitation Entertainment and Recreations Infrastructure Power Food Allocation Distribution and Marketing of Agriculture Commodities Infrastructure Transport and Road Infrastructure Communication Banking and Financial Services Land Use Irrigation Source	127-141
10	Abbreviation & Sources	142-143
11	Disclaimer	144

Location & Political Map



Administrative Setup

List of Village Panchayat & Intermediate Panchayat (Block) Name - 2011

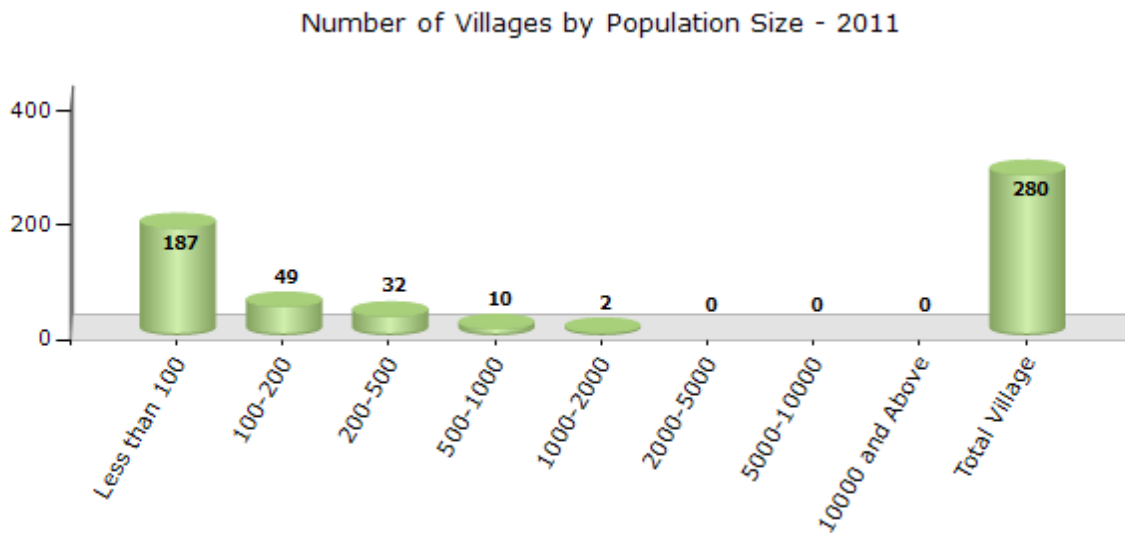
Village Name	Village Panchayat Name	Intermediate Panchayat Name
Arat (211)	Triloknath	Lahul
Auhar (207)	Triloknath	Lahul
Bar (7/12)	Yurnath	Lahul
Baraur (124)	Tindi	Lahul
Barbog (9/1)	Barbog	Lahul
Bargul (11/4)	Mooling	Lahul
Baring (5/14)	Tandi	Lahul
Barnam (2/3)	Shansha	Lahul
Barpa (92)	Kungri	Spiti
Baryo (8/15)	Darcha	Lahul
Bha Baring (1/13)	Mooring	Lahul
Bha Chewar (1/17)	Mooring	Lahul
Bha-Garang (5/15)	Tandi	Lahul
Bha-Sumnam (6/11)	Tandi	Lahul
Bhayadi (1/19)	Mooring	Lahul
Bhujund (109)	Tindi	Lahul
Biling (7/1)	Keylong	Lahul
Bogcha (14/3)	Koksar	Lahul
Bok (8/8)	Kolong	Lahul
Bokar (7/3)	Yurnath	Lahul
Bokta (6/10)	Tandi	Lahul
Chaling (191)	Tingret	Lahul
Chambak (1/9)	Mooring	Lahul
Chamling (131)	Sagnam	Spiti
Chamrat (202)	Chimret	Lahul
Cheling (9/4)	Barbog	Lahul
Chhidang (89)	Kungri	Spiti
Chhika-Be (8/11)	Darcha	Lahul
Chhogjing (1/3)	Mooring	Lahul

Contd....

Demographics

Number of Villages by Population Size - 2011

Less than 100	100-200	200-500	500-1000	1000-2000	2000-5000	5000-10000	10000 and Above	Total Village
187	49	32	10	2	0	0	0	280

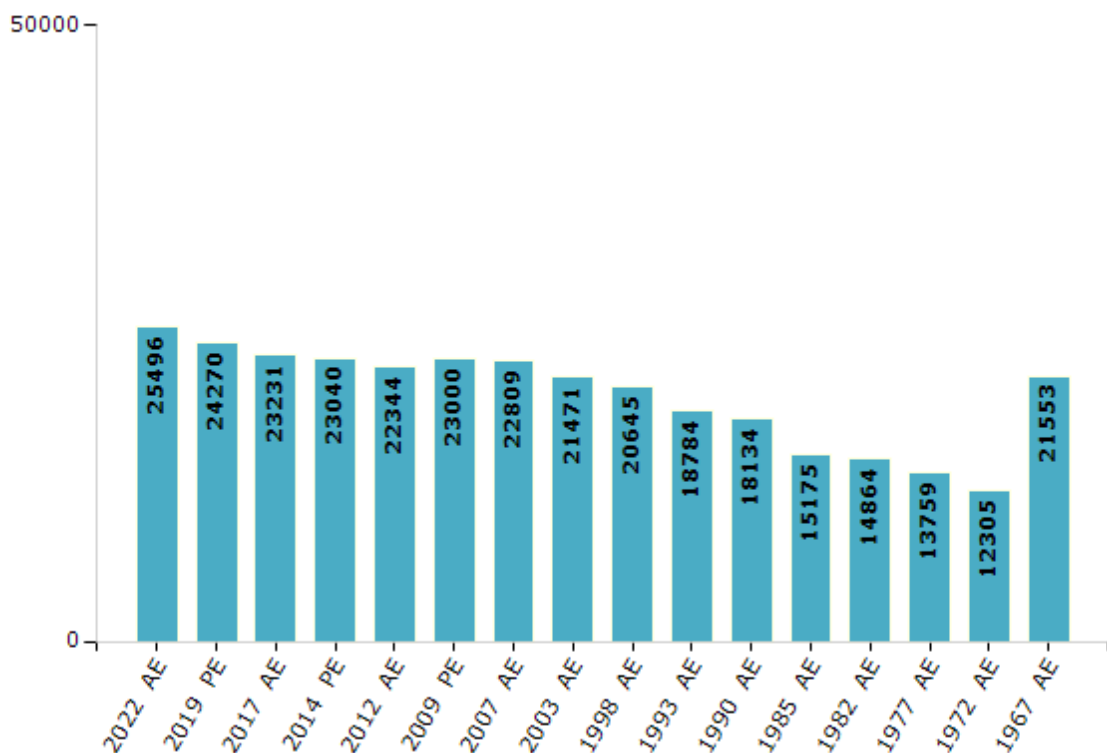


Electoral Features

Electors by Male & Female

Year	Male	Female	Others	Total	Year	Male	Female	Others	Total
2022 AE	13005	12491	0	25496	1998 AE	10936	9709	-	20645
2019 PE	12389	11881	0	24270	1993 AE	9697	9087	-	18784
2017 AE	11692	11539	0	23231	1990 AE	9595	8539	-	18134
2014 PE	11637	11403	0	23040	1985 AE	7933	7242	-	15175
2012 AE	11329	11015	0	22344	1982 AE	7778	7086	-	14864
2009 PE	11717	11283	-	23000	1977 AE	7061	6698	-	13759
2007 AE	11637	11172	-	22809	1972 AE	6226	6079	-	12305
2004 PE	-	-	-	-	1967 AE	-	-	-	21553
2003 AE	11052	10419	-	21471	1952 AE	-	-	-	-
1999 PE	-	-	-	-					

Number of Electors



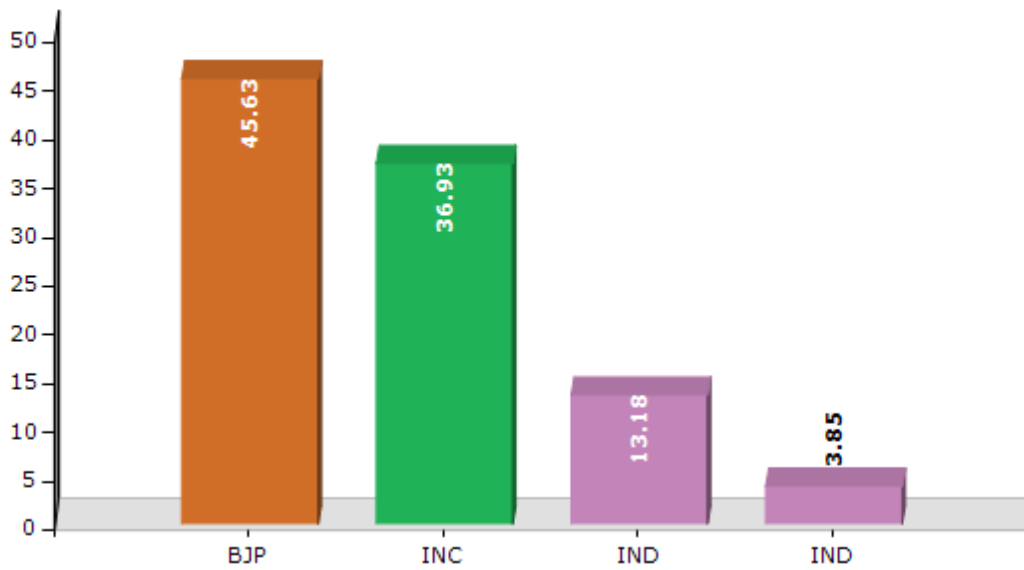
Note : AE : Assembly Election, PE : Assembly Segment of Parliamentary Election

Historical Summary Election Results

Summary Result of Assembly Election - 2017

Candidate Name	Party	Votes	Votes %
Dr. Ram Lal Markanda	BJP	7756	45.63
Ravi Thakur	INC	6278	36.93
Rajinder Karpa	IND	2240	13.18
Sudarshan Jaspa	IND	655	3.85
	NOTA	70	0.41

Votes Percentage of Top Parties - 2017



Polling Station Level Election Results

Number and Name of Polling Stations (PS) (2022)

Number of Polling Stations	Name of Polling Stations	Number of Polling Stations	Name of Polling Stations
1	Bhajund	22	Bha Baring
2	Tindi	23	Mooring
3	Salgran	24	Nalda
4	Kurched	25	Jasrath
5	Salpat	26	Junda
6	Madgran	27	Jahalman
7	Udaipur	28	Gohrman
8	Chimret	29	Lindoor
9	Ghari	30	Rapey
10	Tingret	31	Shansha
11	Karpat	32	Kirting
12	Chhaling	33	Linger
13	Khanjar	34	Ruwaling
14	Shakoli	35	Lote
15	Triloknath	36	Lapshak
16	Kishori	37	Malang
17	Haduka	38	Tholang
18	Sindhwari (Thirot)	39	Tandi
19	Jholing	40	Goshal
20	Naingahar	41	Mooling
21	Chokhang	42	Bargul

Contd....

Polling Station Level Election Results

Polling Station-wise Votes Secured by Overall Top Five Parties in Lahaul and Spiti Assembly in Assembly Election (AE) under Mandi Parliamentary Constituency in Himachal Pradesh (2022)

Number of Polling Station	Winner - Ravi Thakur (INC)	Runner-up - Dr.Ram Lal Markanda (BJP)	3rd - Sudarshan Jaspa (AAP)	4th - ()	5th - ()	NOTA	Other	Total Votes Secured
36	51	39	3			0	0	93
37	94	82	3			1	0	180
38	77	55	1			0	0	133
39	27	92	1			0	0	120
40	184	81	15			3	0	283
41	78	49	7			1	0	135
42	66	32	5			1	0	104
43	203	71	5			2	0	281
44	120	15	1			0	0	136
45	169	97	2			2	0	270
46	146	52	3			1	0	202
47	71	26	6			0	0	103
48	65	15	6			0	0	86
49	231	103	0			2	0	336
50	71	27	1			2	0	101
51	103	20	1			1	0	125
52	125	45	17			1	0	188
53	54	23	7			1	0	85
54	27	37	7			0	0	71
55	51	40	0			0	0	91
56	75	34	2			0	0	111
57	94	31	2			0	0	127
58	132	60	1			1	0	194
59	219	236	14			3	0	472
60	232	195	3			1	0	431
61	233	167	26			1	0	427
62	97	41	6			0	0	144
63	73	29	9			1	0	112
64	132	139	1			0	0	272
65	43	44	0			0	0	87
66	137	103	3			0	0	243
67	110	113	0			0	0	223
68	119	67	0			0	0	186
69	175	169	4			0	0	348
70	120	88	1			0	0	209

Contd....

Polling Station Level Election Results

Winner, Runner-up and 3rd Party Position & Winning Margin According to Polling Stations in Lahaul and Spiti Assembly in Assembly Election (AE) under Mandi Parliamentary Constituency in Himachal Pradesh (2022)

Polling Station Number	Winner Party	Winner Votes (%)	Runner-up Party	Runner-up Votes (%)	Winning Margin Votes (%)	Third Party	Third Party Votes (%)	Other Votes (%)
71	INC	139 (62.61)	BJP	74 (33.33)	65 (29.28)	AAP	9 (4.05)	0 (0)
72	BJP	36 (66.67)	INC	18 (33.33)	18 (33.34)	AAP	0 (0)	0 (0)
73	BJP	89 (54.6)	INC	74 (45.4)	15 (9.2)	AAP	0 (0)	0 (0)
74	BJP	115 (69.28)	INC	50 (30.12)	65 (39.16)	AAP	1 (0.6)	0 (0)
75	BJP	84 (71.79)	INC	33 (28.21)	51 (43.58)	AAP	0 (0)	0 (0)
76	INC	338 (60.14)	BJP	216 (38.43)	122 (21.71)	AAP	5 (0.89)	3 (0.53)
77	INC	84 (63.64)	BJP	47 (35.61)	37 (28.03)	AAP	1 (0.76)	0 (0)
78	INC	103 (51.24)	BJP	94 (46.77)	9 (4.47)	AAP	4 (1.99)	0 (0)
79	INC	126 (58.33)	BJP	90 (41.67)	36 (16.66)	AAP	0 (0)	0 (0)
80	INC	185 (58.36)	BJP	131 (41.32)	54 (17.04)	AAP	1 (0.32)	0 (0)
81	INC	69 (51.49)	BJP	65 (48.51)	4 (2.98)	AAP	0 (0)	0 (0)
82	INC	73 (70.19)	BJP	31 (29.81)	42 (40.38)	AAP	0 (0)	0 (0)
83	BJP	193 (53.02)	INC	171 (46.98)	22 (6.04)	AAP	0 (0)	0 (0)
84	INC	130 (55.79)	BJP	102 (43.78)	28 (12.01)	AAP	0 (0)	1 (0.43)
85	BJP	133 (55.42)	INC	106 (44.17)	27 (11.25)	AAP	1 (0.42)	0 (0)
86	BJP	162 (52.09)	INC	145 (46.62)	17 (5.47)	AAP	2 (0.64)	2 (0.64)
87	INC	236 (51.19)	BJP	224 (48.59)	12 (2.6)	AAP	0 (0)	1 (0.22)
88	INC	85 (58.22)	BJP	61 (41.78)	24 (16.44)	AAP	0 (0)	0 (0)
89	INC	154 (52.38)	BJP	138 (46.94)	16 (5.44)	AAP	1 (0.34)	1 (0.34)
90	INC	101 (70.14)	BJP	43 (29.86)	58 (40.28)	AAP	0 (0)	0 (0)
91	BJP	50 (51.02)	INC	47 (47.96)	3 (3.06)	AAP	0 (0)	1 (1.02)
92	INC	99 (55.31)	BJP	80 (44.69)	19 (10.62)	AAP	0 (0)	0 (0)
Total Lahaul and Spiti AC	INC	9734 (53.2)	BJP	8058 (44.04)	1676 (9.16)	AAP	441 (2.41)	64 (0.35)

Socio-Economic Amenities - Rural

Access to Education Facilities

Particulars	Number of Villages (% of Population)				
	Available	Not Available	If Not Available (Distance of Nearest Facility)		
			A	B	C
Govt. Primary School	197 (91)	83 (9)	62 (6)	18 (0)	3 (3)
Private Primary School	3 (9)	277 (91)	0 (0)	0 (0)	0 (0)
Govt. Middle School	122 (62)	158 (38)	116 (27)	42 (11)	0 (0)
Private Middle School	1 (2)	279 (98)	0 (0)	0 (0)	0 (0)
Govt. Secondary School	57 (40)	223 (60)	114 (27)	96 (27)	12 (5)
Private Secondary School	3 (7)	277 (93)	0 (0)	0 (0)	0 (0)
Govt. Senior Secondary School	35 (35)	245 (65)	95 (24)	88 (24)	62 (16)
Private Senior Secondary School	0 (0)	280 (100)	0 (0)	0 (0)	0 (0)
Govt. Arts and Science Degree College	1 (0)	279 (100)	4 (1)	9 (10)	266 (89)
Private Arts and Science Degree College	0 (0)	280 (100)	0 (0)	0 (0)	0 (0)
Govt. Engineering College	0 (0)	280 (100)	0 (0)	0 (0)	280 (100)
Private Engineering College	0 (0)	280 (100)	0 (0)	0 (0)	0 (0)
Govt. Medicine College	0 (0)	280 (100)	0 (0)	0 (0)	280 (100)
Private Medicine College	0 (0)	280 (100)	0 (0)	0 (0)	0 (0)
Govt. Management Institute	0 (0)	280 (100)	0 (0)	0 (0)	277 (100)
Private Management Institute	0 (0)	280 (100)	0 (0)	0 (0)	3 (0)
Govt. Polytechnic	0 (0)	280 (100)	0 (0)	0 (0)	279 (99)
Private Polytechnic	0 (0)	280 (100)	0 (0)	0 (0)	1 (1)
Govt. Vocational Training School/ITI	1 (3)	279 (97)	3 (1)	7 (4)	269 (93)
Private Vocational Training School/ITI	0 (0)	280 (100)	0 (0)	0 (0)	0 (0)
Govt. Non Formal Training Centre	0 (0)	280 (100)	0 (0)	0 (0)	270 (95)
Private Non Formal Training Centre	0 (0)	280 (100)	0 (0)	0 (0)	10 (5)
Govt. School For Disabled	0 (0)	280 (100)	0 (0)	0 (0)	280 (100)
Private School For Disabled	0 (0)	280 (100)	0 (0)	0 (0)	0 (0)
Government Others	0 (0)	280 (100)	0 (0)	0 (0)	280 (100)
Private Others	0 (0)	280 (100)	0 (0)	0 (0)	0 (0)

Note : Distance A : Less than 5 km; B : Between 5-10 km; C : 10+ km.; Source : Data Analysis is based on 2011 Census.

DISCLAIMER

The Terms of Use and Disclaimer of Datanet India Private Limited (hereinafter referred to as "Datanet") for use of this analysis report of **Lahaul and Spiti Assembly Constituency (Lahaul and Spiti Vidhan Sabha)** :-

1. **Assembly Factbook™** is a Registered Trade Mark owned by Datanet.
2. All the maps are sketched and graphical representation only and have not been drawn to the scale and also not to represent the actual geographical area or boundary of the unit.
3. The data for the aforesaid analysis is based on authentic sources and has been culled from the various publications of Census, CSO and NSSO for district and block level data, various central and state government departments, Central & State Elections Commissions and the concerned Returning Officers' releases, Electoral Rolls, Election results and allied publications, internal assessment, surveys, estimates and analysis. Therefore, certain adjustment of data at micro level may have been done to arrive closer to the macro data.
4. Data have been provided on an "As Is" and "As AVAILABLE" basis
5. The colours shown in the maps or diagram and charts of a particular party, alliance or AC are indicative and do not represent them.
6. This publication which includes maps, sheets, graphs and data would be the property under copyright of Datanet only. The user may use these for its internal study, analysis and research purposes. It's public display, re-selling or any commercial uses by the user are not allowed.
7. Datanet has taken due care and caution in compilation and processing of data and allied information, but does not guarantee the accuracy, adequacy or completeness of any information/analysis and will be not responsible for any errors or omissions or for the results obtained from the use of such information/analysis.
8. All the contents for the publication have been culled from various authentic sources and Datanet reasonably believes such sources to be reliable, but does not make any representations, express or implied as to the accuracy or fitness of use of such information. The information or contents of the information/analysis do not constitute advice and should not be relied upon in making (or refraining from making) any decision. Any reliance placed upon the information provided by Datanet is the sole responsibility and strictly at the user's risk.
9. In no event will Datanet be liable for any damages (including, without limitation, damages for loss of business projects, or loss of profits) arising in contract, tort or otherwise from the use of or inability to use any of its contents, or from any action taken (or refrained from being taken) as a result of using the analysis or any of its contents. Datanet its directors, owners, editors, officials, employees, distributor and agents or any associate will not be liable for any errors in the information contained or any consequences arising from the use of the contents of the provided information/analysis.
10. If any provision of these terms and conditions is held invalid or illegal or unenforceable for any reason by any court of competent jurisdiction, such provision shall be severed and the remainder of provisions of the terms and conditions shall continue in full force and effect as if the Term of Use had been executed with the invalid, illegal or unenforceable provision eliminated.
11. If there are any discrepancies in the information provided, please bring it to attention of Datanet for suitable rectification measures.

Buy Online This Complete Book At
Datanet India eBooks Store

www.indiastatpublications.com

or go directly at

[http://www.indiastatpublications.com/
Assembly_factbook/Himachal Pradesh/Mandi/
Lahaul_and_Spiti](http://www.indiastatpublications.com/Assembly_factbook/Himachal%20Pradesh/Mandi/Lahaul_and_Spiti)

 **indiastat**elections

ISBN : 978-93-5822-780-2



9 789358 227802