



Himachal Pradesh

Assembly Factbook™

Kinnaur Assembly Constituency



Key Electoral Data of Kinnaur
Assembly Constituency (Vidhan Sabha)

Himachal Pradesh
Assembly FactbookTM
Kinnaur Assembly Constituency



Kinnaur Vidhan Sabha

Editor & Director

Dr. R.K. Thukral

Research Editor

Dr. Shafeeq Rahman

Compiled, Researched and Published by Datanet India Pvt. Ltd.

D-100, 1st Floor,

Okhla Industrial Area, Phase-I,

New Delhi- 110020.

Ph.: 91-11- 43580781-84

Email : support@indiastatpublications.com

Website : www.indiastatelections.com

Online Book Store :

www.indiastatpublications.com

Report No. : AFB/HP-68-0125

ISBN : 978-93-5822-684-3

First Edition : January, 2018

Eighth Updated Edition : January, 2025

Price : Rs.11500/-

US\$ 310

© **Datanet India Pvt. Ltd.**

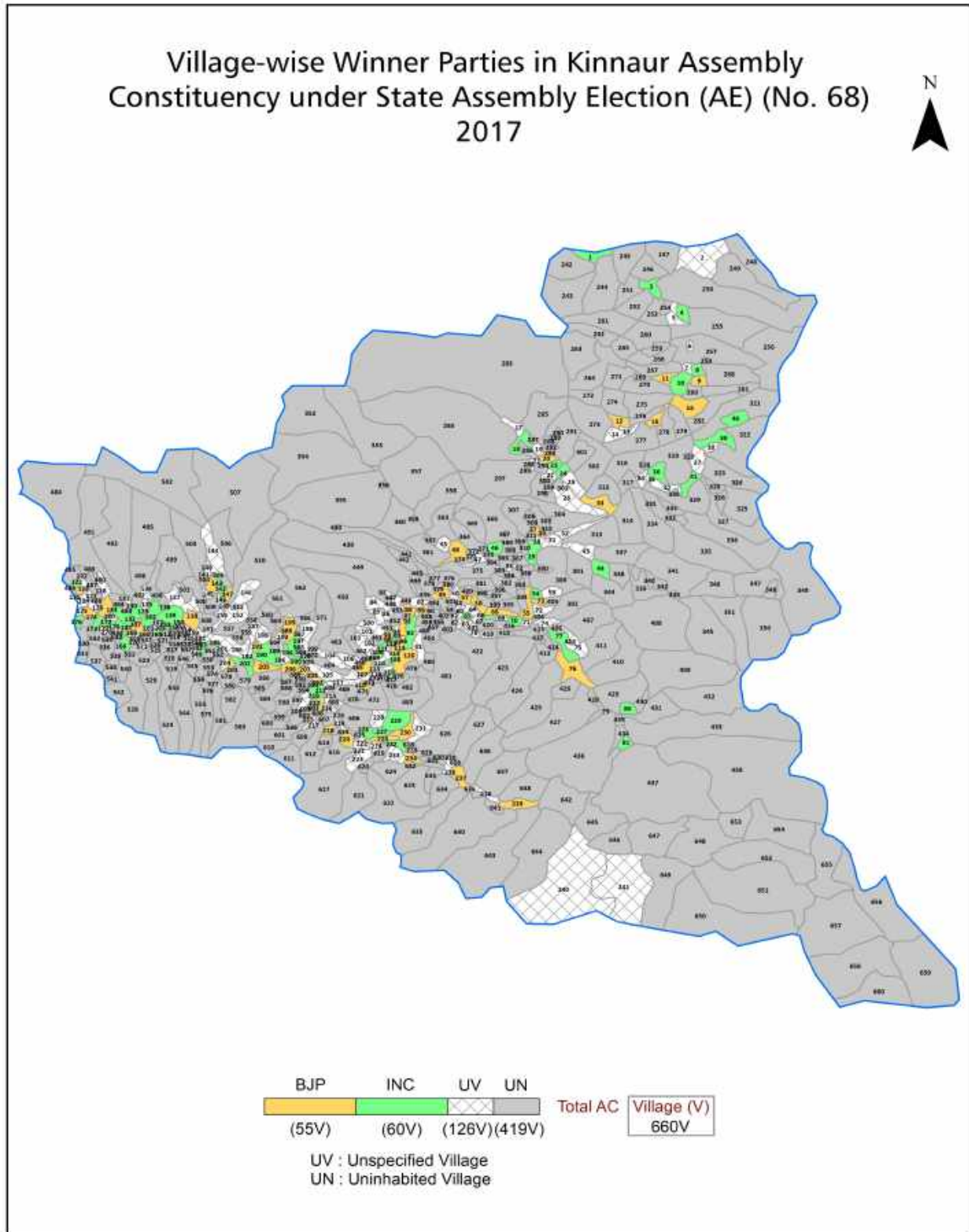
All rights reserved. No part of this book may be reproduced, stored in a retrieval system or transmitted in any form or by any means, mechanical photocopying, photographing, scanning, recording or otherwise without the prior written permission of the publisher. Please refer to Disclaimer at page no. 160 for the use of this publication.

Printed in India

Contents

No.	Particulars	Page No.
	Introduction	
1	Assembly Constituency - (Vidhan Sabha) at a Glance Features of Assembly as per Delimitation Commission of India (2008)	1-2
	Location and Political Maps	
2	Location Map Boundaries of Assembly Constituency - (Vidhan Sabha) in District Boundaries of Assembly Constituency under Parliamentary Constituency - (Lok Sabha) Village-wise Winner Parties- 2024, 2022, 2019, 2017, 2014, 2012 and 2009	3-11
	Administrative Setup (2011)	
3	District Sub-district Towns Villages Inhabited Villages Uninhabited Villages Village Panchayat Intermediate Panchayat	12-28
	Demographics (2011)	
4	Population Households Rural/Urban Population Villages by Population Size Sex Ratio (Total & 0-6 Years) Religious Population Social Population Literacy Rate	29-30
	Electoral Features	
5	Important Dates of Last Elections Held Electors by Gender Service Electors Voters Voters Turnout Polling Stations & Average Number of Electors per Polling Station Electors by Age Group Present Elected Representatives	31-36
	Historical Summary Election Results	
6	Vote Share of Major Parties Winning Margin (Number & Percentage) Polarity of Parties Summary Result of Assembly Segment of Parliamentary Elections 2024, 2019, 2014, 2009, 2004 and 1999 Summary Result of Assembly Elections 2022, 2017, 2012, 2007, 2003, 1998, 1993, 1990, 1985, 1982, 1977, 1972 and 1967	37-58
	Polling Station Level Election Results	
7	Name and Number of Polling Station 2024, 2022, 2019, 2017, 2014, 2012 and 2009 Polling Station-wise Electors, Voters & Voters Turnout 2024, 2022, 2019, 2017, 2014, 2012 and 2009 Polling Station wise Elections Results 2024, 2022, 2019, 2017, 2014, 2012 and 2009	59-140
	Share of Assembly Constituency	
8	Share of Assembly Constituency - (Vidhan Sabha) in State, District and Parliamentary Constituency - (Lok Sabha)	141
	Socio-Economic Amenities (2011)	
9	Access to Administrative Units Agricultural, Manufacturing and Industrial Commodities Demographic Indicators Education Health & Manpower Drinking Water Supply Sanitation Entertainment and Recreations Infrastructure Power Food Allocation Distribution and Marketing of Agriculture Commodities Infrastructure Transport and Road Infrastructure Communication Banking and Financial Services Land Use Irrigation Source	143-157
10	Abbreviation & Sources	158-159
11	Disclaimer	160

Location & Political Map



Administrative Setup

List of Village Panchayat & Intermediate Panchayat (Block) Name - 2011

Village Name	Village Panchayat Name	Intermediate Panchayat Name
Agade (31/ 7)	Nichar	Nichar
Akpa Khas (33/1)	Jangi	Pooh
Asrang Khas (7/1)	Asrang	Pooh
Baiyee (30/10)	Katgaon	Nichar
Bara Kamba (7/3)	Chota Kamba	Nichar
Barang Khas (37/1)	Barang	Kalpa
Baro (32/2)	Sungra	Nichar
Barua Khas (19/1)	Barua	Kalpa
Basharang (8/1)	Chota Kamba	Nichar
Bato (40/6)	Ribba	Pooh
Batseri (43/1)	Batseri	Kalpa
Baturi (13/3)	Sapni	Kalpa
Boktu (6/7)	Pangi	Kalpa
Boning Saring (34/4)	Themgarang (Boning Saring)	Kalpa
Brelingi (17/2)	Duni	Kalpa
Burang (1/10)	Rupi	Nichar
Burcha (67/3)	Panvi	Nichar
Change (13/4)	Telangi	Kalpa
Change (35/2)	Bari	Nichar
Charang Khas (59/1)	Charang	Pooh
Chasu Khas (32/1)	Chansu	Kalpa
Chaura (37/1)	Taranda	Nichar
Chhirem (30/8)	Yangpa	Nichar
Chhitkul (63)	Chhitkul	Kalpa
Chhonda (36/4)	Taranda	Nichar
Chhota Kamba (8/2)	Chota Kamba	Nichar
Chhuyian (40/7)	Ribba	Pooh
Cholling (104/2)	Meeru	Nichar
Chuling (8)	Hango	Pooh

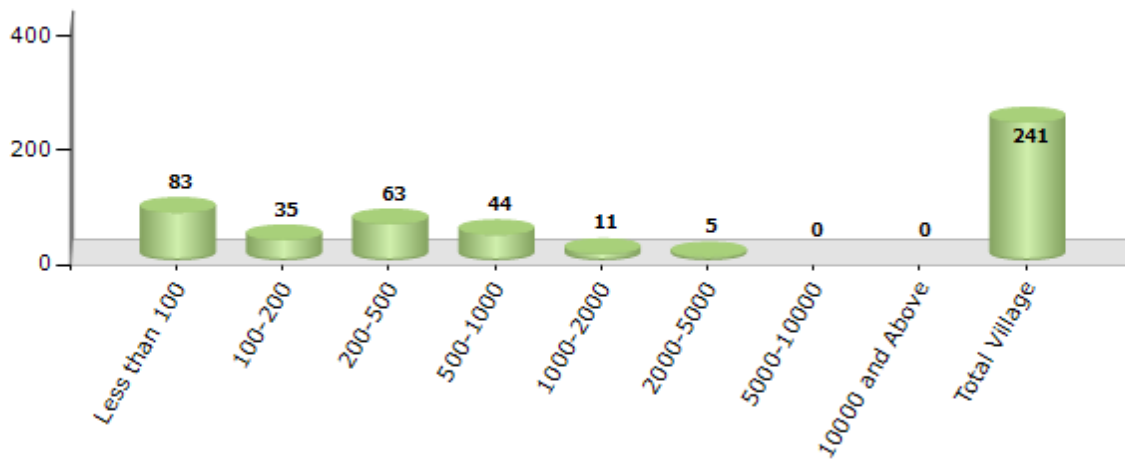
Contd....

Demographics

Number of Villages by Population Size - 2011

Less than 100	100-200	200-500	500-1000	1000-2000	2000-5000	5000-10000	10000 and Above	Total Village
83	35	63	44	11	5	0	0	241

Number of Villages by Population Size - 2011

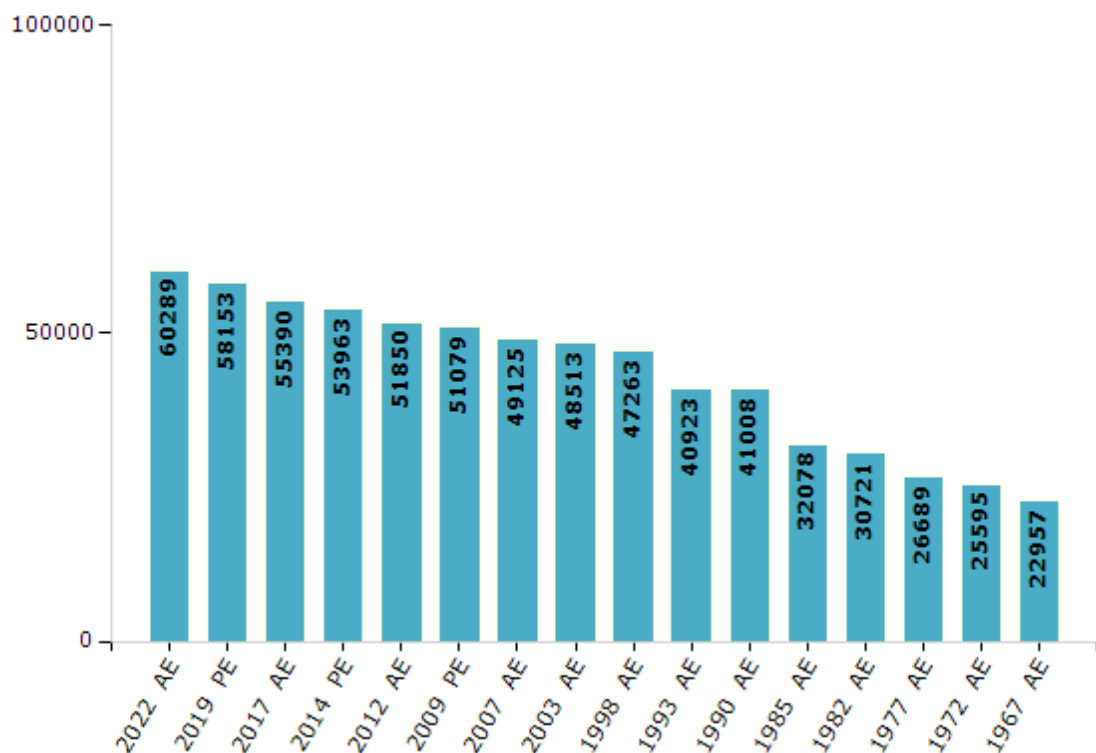


Electoral Features

Electors by Male & Female

Year	Male	Female	Others	Total	Year	Male	Female	Others	Total
2022 AE	30435	29854	0	60289	1998 AE	25207	22056	-	47263
2019 PE	29512	28641	0	58153	1993 AE	21041	19882	-	40923
2017 AE	28069	27321	0	55390	1990 AE	21749	19259	-	41008
2014 PE	27835	26128	0	53963	1985 AE	16705	15373	-	32078
2012 AE	26750	25100	0	51850	1982 AE	15840	14881	-	30721
2009 PE	26654	24425	-	51079	1977 AE	13223	13466	-	26689
2007 AE	25189	23936	-	49125	1972 AE	12706	12889	-	25595
2004 PE	-	-	-	-	1967 AE	-	-	-	22957
2003 AE	25697	22816	-	48513	1952 AE	-	-	-	-
1999 PE	-	-	-	-					

Number of Electors



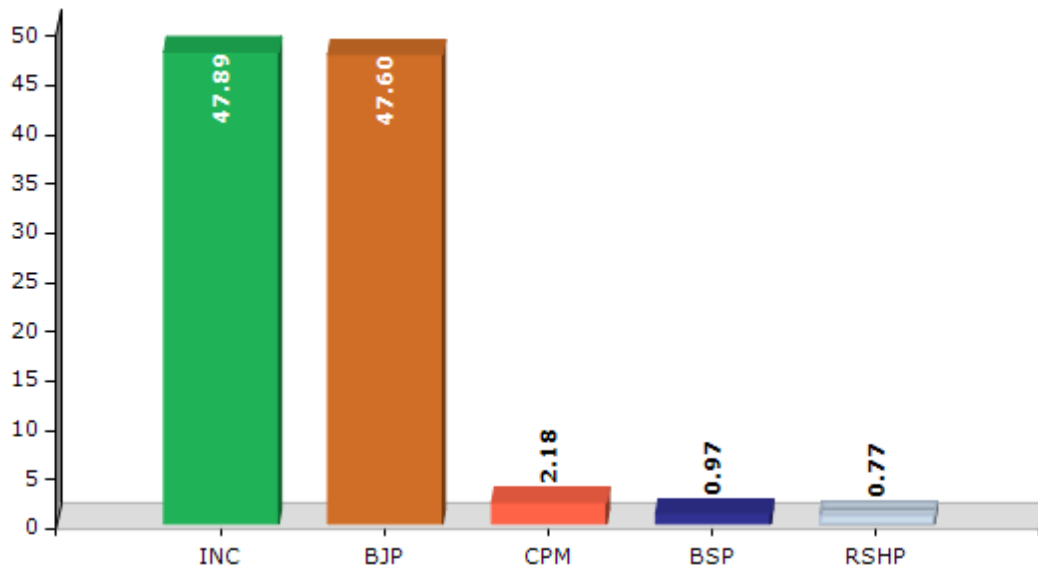
Note : AE : Assembly Election, PE : Assembly Segment of Parliamentary Election

Historical Summary Election Results

Summary Result of Assembly Election - 2017

Candidate Name	Party	Votes	Votes %
Jagat Singh Negi	INC	20029	47.89
Tejwant Singh Negi	BJP	19909	47.6
Jeevan Singh	CPM	913	2.18
Kailash Chand	BSP	404	0.97
Rajeev Kumar Negi	RSHP	321	0.77
	NOTA	249	0.6

Votes Percentage of Top Parties - 2017



Polling Station Level Election Results

Number and Name of Polling Stations (PS) (2022)

Number of Polling Stations	Name of Polling Stations	Number of Polling Stations	Name of Polling Stations
1	Sumra	22	Kanam
2	Shalkhar	23	Spillo
3	Chango	24	Lippa
4	Maling	25	Asrang
5	Nako	26	Jangi
6	Kaa	27	Nesang
7	Yangthang	28	Moorang
8	Liyo	29	Gramang
9	Hango	30	Rispa
10	Chuling	31	Sakiba
11	Tashigang	32	Thangi
12	Namgia	33	Lamber
13	Dubling	34	Kunnu
14	Pooh 1	35	Charang
15	Pooh 2 (Labrang)	36	Ribba 1
16	Shyaso	37	Ribba 2
17	Sunnam	38	Akpa
18	Rushkuling	39	Aren
19	Giabung	40	Rarang
20	Ropa	41	Shilapur
21	Labrang	42	Khadra

Contd....

Polling Station Level Election Results

Polling Station-wise Votes Secured by Overall Top Five Parties in Kinnaur Assembly in Assembly Election (AE) under Mandi Parliamentary Constituency in Himachal Pradesh (2022)

Number of Polling Station	Winner - Jagat Singh Negi (INC)	Runner-up - Surat Negi (BJP)	3rd - Tejwant Singh Negi (IND)	4th - Tersem Singh (AAP)	5th - Anil Kapoor (BSP)	NOTA	Other	Total Votes Secured
36	239	104	39	2	7	1	0	392
37	333	169	74	8	2	4	0	590
38	47	31	32	0	4	1	0	115
39	29	56	7	3	2	0	0	97
40	272	110	208	0	8	0	0	598
41	48	6	22	0	0	2	0	78
42	37	25	51	1	0	0	0	114
43	244	200	213	9	6	5	0	677
44	278	224	186	1	4	3	0	696
45	201	97	149	7	4	2	0	460
46	111	69	106	4	1	1	0	292
47	281	116	166	4	5	4	0	576
48	123	69	100	2	0	1	0	295
49	218	35	106	3	11	6	0	379
50	163	129	47	8	0	1	0	348
51	370	219	97	20	5	4	0	715
52	173	144	59	3	3	3	0	385
53	291	95	101	7	0	5	0	499
54	159	59	106	0	1	2	0	327
55	191	82	134	3	4	1	0	415
56	98	40	120	2	0	2	0	262
57	280	78	168	7	2	4	0	539
58	143	66	103	5	0	2	0	319
59	160	79	89	3	2	1	0	334
60	180	50	104	4	1	0	0	339
61	332	235	111	1	8	8	0	695
62	106	70	77	2	0	1	0	256
63	128	49	89	2	0	0	0	268
64	233	107	86	1	2	3	0	432
65	191	186	32	2	1	0	0	412
66	152	69	40	6	0	0	0	267
67	161	119	89	2	3	1	0	375
68	327	126	204	5	1	8	0	671
69	230	180	132	3	0	0	0	545
70	365	176	76	2	3	3	0	625

Contd....

Polling Station Level Election Results

Winner, Runner-up and 3rd Party Position & Winning Margin According to Polling Stations in Kinnaur Assembly in Assembly Election (AE) under Mandi Parliamentary Constituency in Himachal Pradesh (2022)

Polling Station Number	Winner Party	Winner Votes (%)	Runner-up Party	Runner-up Votes (%)	Winning Margin Votes (%)	Third Party	Third Party Votes (%)	Other Votes (%)
71	BJP	57 (53.27)	INC	45 (42.06)	12 (11.21)	IND (TSN)	5 (4.67)	0 (0)
72	INC	188 (52.81)	BJP	131 (36.8)	57 (16.01)	IND (TSN)	30 (8.43)	7 (1.97)
73	INC	165 (42.09)	BJP	129 (32.91)	36 (9.18)	IND (TSN)	88 (22.45)	10 (2.55)
74	INC	178 (40.92)	IND (TSN)	153 (35.17)	25 (5.75)	BJP	97 (22.3)	7 (1.61)
75	INC	344 (56.77)	BJP	125 (20.63)	219 (36.14)	IND (TSN)	121 (19.97)	16 (2.64)
76	INC	399 (54.43)	BJP	180 (24.56)	219 (29.87)	IND (TSN)	135 (18.42)	19 (2.59)
77	INC	73 (51.41)	BJP	56 (39.44)	17 (11.97)	IND (TSN)	9 (6.34)	4 (2.82)
78	BJP	48 (46.6)	INC	31 (30.1)	17 (16.5)	IND (TSN)	22 (21.36)	2 (1.94)
79	INC	43 (55.84)	BJP	25 (32.47)	18 (23.37)	IND (TSN)	7 (9.09)	2 (2.6)
80	IND (TSN)	282 (52.51)	INC	171 (31.84)	111 (20.67)	BJP	75 (13.97)	9 (1.68)
81	IND (TSN)	72 (71.29)	INC	20 (19.8)	52 (51.49)	BJP	9 (8.91)	0 (0)
82	INC	107 (45.73)	BJP	101 (43.16)	6 (2.57)	IND (TSN)	23 (9.83)	3 (1.28)
83	BJP	142 (51.82)	INC	96 (35.04)	46 (16.78)	IND (TSN)	34 (12.41)	2 (0.73)
84	INC	77 (58.33)	BJP	45 (34.09)	32 (24.24)	IND (TSN)	9 (6.82)	1 (0.76)
85	INC	98 (56.32)	BJP	58 (33.33)	40 (22.99)	IND (TSN)	16 (9.2)	2 (1.15)
86	INC	190 (51.21)	BJP	130 (35.04)	60 (16.17)	IND (TSN)	38 (10.24)	13 (3.5)
87	BJP	146 (49.66)	INC	85 (28.91)	61 (20.75)	IND (TSN)	33 (11.22)	30 (10.2)
88	INC	364 (55.07)	BJP	182 (27.53)	182 (27.54)	IND (TSN)	99 (14.98)	16 (2.42)
89	BJP	302 (44.41)	INC	264 (38.82)	38 (5.59)	IND (TSN)	100 (14.71)	14 (2.06)
90	BJP	112 (44.98)	INC	106 (42.57)	6 (2.41)	IND (TSN)	26 (10.44)	5 (2.01)
91	INC	247 (58.25)	BJP	111 (26.18)	136 (32.07)	IND (TSN)	58 (13.68)	8 (1.89)
92	INC	167 (45.5)	BJP	147 (40.05)	20 (5.45)	IND (TSN)	49 (13.35)	4 (1.09)
93	INC	172 (50.15)	BJP	127 (37.03)	45 (13.12)	IND (TSN)	41 (11.95)	3 (0.87)
94	INC	255 (50.2)	BJP	151 (29.72)	104 (20.48)	IND (TSN)	91 (17.91)	11 (2.17)
95	BJP	52 (40.94)	INC	42 (33.07)	10 (7.87)	IND (TSN)	33 (25.98)	0 (0)
96	INC	215 (47.78)	BJP	170 (37.78)	45 (10)	IND (TSN)	58 (12.89)	7 (1.56)
97	INC	199 (60.12)	BJP	77 (23.26)	122 (36.86)	IND (TSN)	49 (14.8)	6 (1.81)
98	BJP	121 (63.68)	INC	49 (25.79)	72 (37.89)	IND (TSN)	14 (7.37)	6 (3.16)
99	INC	217 (43.23)	BJP	184 (36.65)	33 (6.58)	IND (TSN)	98 (19.52)	3 (0.6)
100	INC	304 (57.25)	BJP	179 (33.71)	125 (23.54)	IND (TSN)	35 (6.59)	13 (2.45)
101	INC	209 (40.9)	IND (TSN)	148 (28.96)	61 (11.94)	BJP	141 (27.59)	13 (2.54)
102	INC	33 (41.77)	BJP	24 (30.38)	9 (11.39)	IND (TSN)	20 (25.32)	2 (2.53)
103	BJP	54 (45.76)	INC	53 (44.92)	1 (0.84)	IND (TSN)	10 (8.47)	1 (0.85)
104	BJP	67 (48.91)	INC	60 (43.8)	7 (5.11)	IND (TSN)	8 (5.84)	2 (1.46)
105	BJP	34 (53.13)	INC	27 (42.19)	7 (10.94)	IND (TSN)	3 (4.69)	0 (0)

Contd....

Socio-Economic Amenities - Rural

Access to Education Facilities

Particulars	Number of Villages (% of Population)				
	Available	Not Available	If Not Available (Distance of Nearest Facility)		
			A	B	C
Govt. Primary School	163 (94)	78 (6)	45 (5)	28 (1)	3 (0)
Private Primary School	13 (14)	228 (86)	0 (0)	1 (0)	1 (0)
Govt. Middle School	95 (69)	146 (31)	76 (20)	56 (9)	13 (2)
Private Middle School	10 (10)	231 (90)	0 (0)	0 (0)	0 (0)
Govt. Secondary School	57 (51)	184 (49)	89 (27)	71 (18)	23 (4)
Private Secondary School	6 (6)	235 (94)	0 (0)	0 (0)	0 (0)
Govt. Senior Secondary School	25 (29)	216 (71)	70 (26)	79 (26)	66 (19)
Private Senior Secondary School	2 (2)	239 (98)	0 (0)	0 (0)	0 (0)
Govt. Arts and Science Degree College	1 (3)	240 (97)	8 (7)	15 (9)	216 (81)
Private Arts and Science Degree College	0 (0)	241 (100)	0 (0)	0 (0)	1 (0)
Govt. Engineering College	0 (0)	241 (100)	0 (0)	0 (0)	57 (25)
Private Engineering College	0 (0)	241 (100)	0 (0)	0 (0)	184 (75)
Govt. Medicine College	0 (0)	241 (100)	0 (0)	0 (0)	235 (96)
Private Medicine College	0 (0)	241 (100)	0 (0)	0 (0)	6 (4)
Govt. Management Institute	0 (0)	241 (100)	0 (0)	0 (0)	231 (98)
Private Management Institute	0 (0)	241 (100)	0 (0)	0 (0)	10 (2)
Govt. Polytechnic	0 (0)	241 (100)	0 (0)	0 (0)	237 (98)
Private Polytechnic	0 (0)	241 (100)	0 (0)	0 (0)	4 (2)
Govt. Vocational Training School/ITI	1 (3)	240 (97)	9 (7)	14 (9)	217 (81)
Private Vocational Training School/ITI	0 (0)	241 (100)	0 (0)	0 (0)	0 (0)
Govt. Non Formal Training Centre	1 (3)	240 (97)	8 (7)	14 (9)	218 (81)
Private Non Formal Training Centre	0 (0)	241 (100)	0 (0)	0 (0)	0 (0)
Govt. School For Disabled	0 (0)	241 (100)	0 (0)	0 (0)	240 (100)
Private School For Disabled	0 (0)	241 (100)	0 (0)	0 (0)	1 (0)
Government Others	0 (0)	241 (100)	0 (0)	0 (0)	0 (0)
Private Others	0 (0)	241 (100)	0 (0)	0 (0)	0 (0)

Note : Distance A : Less than 5 km; B : Between 5-10 km; C : 10+ km.; Source : Data Analysis is based on 2011 Census.

DISCLAIMER

The Terms of Use and Disclaimer of Datanet India Private Limited (hereinafter referred to as "Datanet") for use of this analysis report of **Kinnaur Assembly Constituency (Kinnaur Vidhan Sabha)** :-

1. **Assembly Factbook™** is a Registered Trade Mark owned by Datanet.
2. All the maps are sketched and graphical representation only and have not been drawn to the scale and also not to represent the actual geographical area or boundary of the unit.
3. The data for the aforesaid analysis is based on authentic sources and has been culled from the various publications of Census, CSO and NSSO for district and block level data, various central and state government departments, Central & State Elections Commissions and the concerned Returning Officers' releases, Electoral Rolls, Election results and allied publications, internal assessment, surveys, estimates and analysis. Therefore, certain adjustment of data at micro level may have been done to arrive closer to the macro data.
4. Data have been provided on an "As Is" and "As AVAILABLE" basis
5. The colours shown in the maps or diagram and charts of a particular party, alliance or AC are indicative and do not represent them.
6. This publication which includes maps, sheets, graphs and data would be the property under copyright of Datanet only. The user may use these for its internal study, analysis and research purposes. It's public display, re-selling or any commercial uses by the user are not allowed.
7. Datanet has taken due care and caution in compilation and processing of data and allied information, but does not guarantee the accuracy, adequacy or completeness of any information/analysis and will be not responsible for any errors or omissions or for the results obtained from the use of such information/analysis.
8. All the contents for the publication have been culled from various authentic sources and Datanet reasonably believes such sources to be reliable, but does not make any representations, express or implied as to the accuracy or fitness of use of such information. The information or contents of the information/analysis do not constitute advice and should not be relied upon in making (or refraining from making) any decision. Any reliance placed upon the information provided by Datanet is the sole responsibility and strictly at the user's risk.
9. In no event will Datanet be liable for any damages (including, without limitation, damages for loss of business projects, or loss of profits) arising in contract, tort or otherwise from the use of or inability to use any of its contents, or from any action taken (or refrained from being taken) as a result of using the analysis or any of its contents. Datanet its directors, owners, editors, officials, employees, distributor and agents or any associate will not be liable for any errors in the information contained or any consequences arising from the use of the contents of the provided information/analysis.
10. If any provision of these terms and conditions is held invalid or illegal or unenforceable for any reason by any court of competent jurisdiction, such provision shall be severed and the remainder of provisions of the terms and conditions shall continue in full force and effect as if the Term of Use had been executed with the invalid, illegal or unenforceable provision eliminated.
11. If there are any discrepancies in the information provided, please bring it to attention of Datanet for suitable rectification measures.

Buy Online This Complete Book At
Datanet India eBooks Store

www.indiastatpublications.com

or go directly at

[http://www.indiastatpublications.com/
Assembly_factbook/Himachal Pradesh/Mandi/ Kinnaur](http://www.indiastatpublications.com/Assembly_factbook/Himachal%20Pradesh/Mandi/Kinnaur)

 **indiastat**elections

ISBN : 978-93-5822-684-3



9 789358 226843