



Himachal Pradesh

# Assembly Factbook™

Balh Assembly Constituency



Key Electoral Data of Balh  
Assembly Constituency (Vidhan Sabha)

Himachal Pradesh  
**Assembly Factbook**<sup>TM</sup>  
Balh Assembly Constituency



Balh Vidhan Sabha

## **Editor & Director**

Dr. R.K. Thukral

## **Research Editor**

Dr. Shafeeq Rahman

## **Compiled, Researched and Published by Datanet India Pvt. Ltd.**

D-100, 1st Floor,

Okhla Industrial Area, Phase-I,

New Delhi- 110020.

Ph.: 91-11- 43580781-84

Email : support@indiastatpublications.com

Website : www.indiastatelections.com

## **Online Book Store :**

www.indiastatpublications.com

**Report No. :** AFB/HP-34-0125

**ISBN :** 978-93-5822-690-4

**First Edition :** January, 2018

**Eighth Updated Edition :** January, 2025

**Price :** Rs.11500/-

US\$ 310

© **Datanet India Pvt. Ltd.**

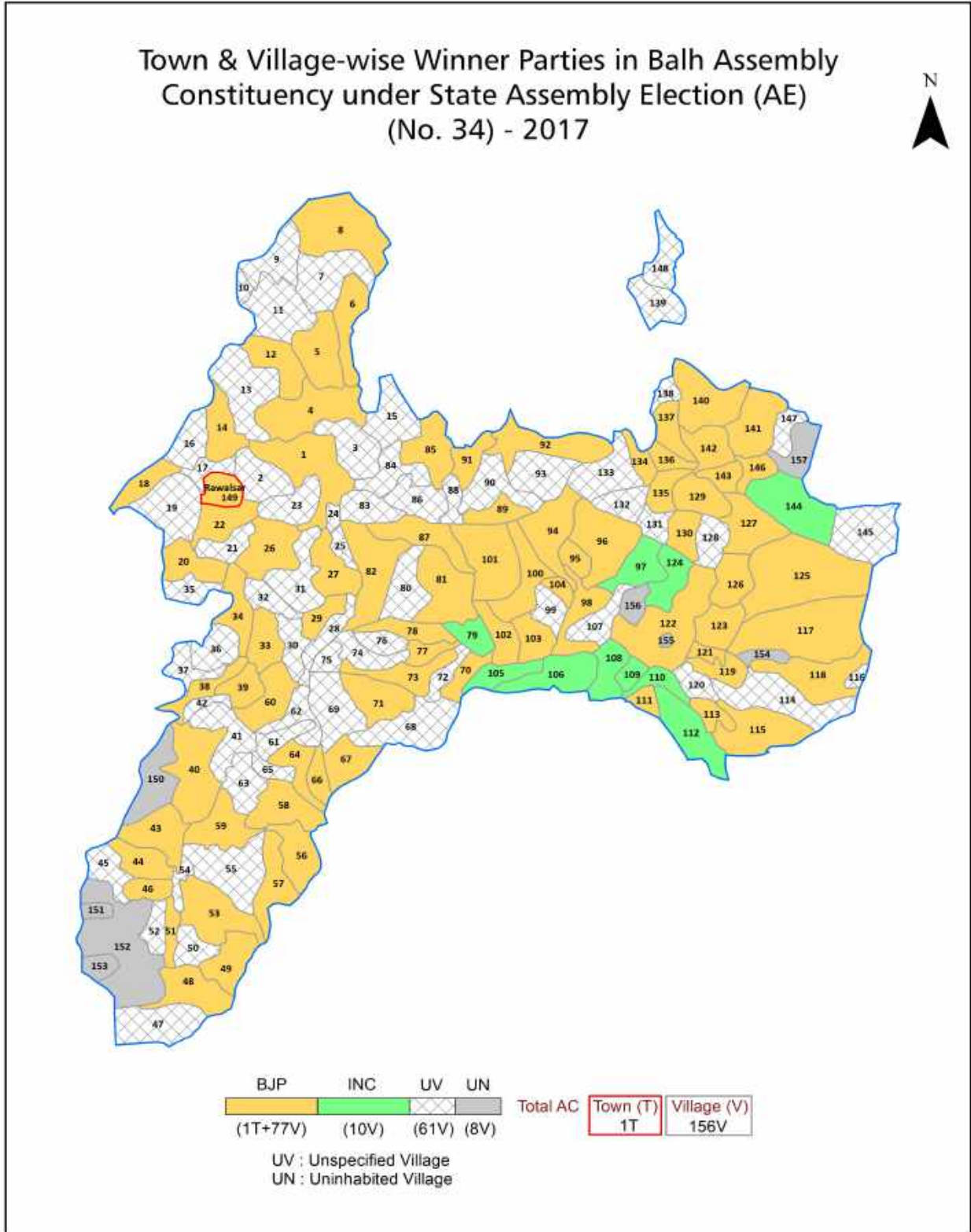
All rights reserved. No part of this book may be reproduced, stored in a retrieval system or transmitted in any form or by any means, mechanical photocopying, photographing, scanning, recording or otherwise without the prior written permission of the publisher. Please refer to Disclaimer at page no. 138 for the use of this publication.

Printed in India

# Contents

No.	Particulars	Page No.
	<b>Introduction</b>	
1	Assembly Constituency - (Vidhan Sabha) at a Glance   Features of Assembly as per Delimitation Commission of India (2008)	1-2
	<b>Location and Political Maps</b>	
2	Location Map   Boundaries of Assembly Constituency - (Vidhan Sabha) in District   Boundaries of Assembly Constituency under Parliamentary Constituency - (Lok Sabha)   Town & Village-wise Winner Parties- 2024, 2022, 2019, 2017, 2014, 2012 and 2009	3-11
	<b>Administrative Setup (2011)</b>	
3	District   Sub-district   Towns   Villages   Inhabited Villages   Uninhabited Villages   Village Panchayat   Intermediate Panchayat	12-20
	<b>Demographics (2011)</b>	
4	Population   Households   Rural/Urban Population   Towns and Villages by Population Size   Sex Ratio (Total & 0-6 Years)   Religious Population   Social Population   Literacy Rate	21-22
	<b>Electoral Features</b>	
5	Important Dates of Last Elections Held   Electors by Gender   Service Electors   Voters   Voters Turnout   Polling Stations & Average Number of Electors per Polling Station   Electors by Age Group   Present Elected Representatives	23-28
	<b>Historical Summary Election Results</b>	
6	Vote Share of Major Parties   Winning Margin (Number & Percentage)   Polarity of Parties   Summary Result of Assembly Segment of Parliamentary Elections 2024, 2019, 2014, 2009, 2004 and 1999   Summary Result of Assembly Elections 2022, 2017, 2012, 2007, 2003, 1998, 1993, 1990, 1985, 1982, 1977, 1972 and 1967	29-50
	<b>Polling Station Level Election Results</b>	
7	Name and Number of Polling Station 2024, 2022, 2019, 2017, 2014, 2012 and 2009   Polling Station-wise Electors, Voters & Voters Turnout 2024, 2022, 2019, 2017, 2014, 2012 and 2009   Polling Station wise Elections Results 2024, 2022, 2019, 2017, 2014, 2012 and 2009	51-118
	<b>Share of Assembly Constituency</b>	
8	Share of Assembly Constituency - (Vidhan Sabha) in State, District and Parliamentary Constituency - (Lok Sabha)	119
	<b>Socio-Economic Amenities (2011)</b>	
9	Access to Administrative Units   Agricultural, Manufacturing and Industrial Commodities   Demographic Indicators   Education   Health & Manpower   Drinking Water Supply   Sanitation   Entertainment and Recreations Infrastructure   Power   Food Allocation Distribution and Marketing of Agriculture Commodities Infrastructure   Transport and Road Infrastructure   Communication   Banking and Financial Services   Land Use   Irrigation Source	121-135
10	<b>Abbreviation &amp; Sources</b>	136-137
11	<b>Disclaimer</b>	138

Location & Political Map





## Administrative Setup

### List of Village Panchayat & Intermediate Panchayat (Block) Name - 2011

Village Name	Village Panchayat Name	Intermediate Panchayat Name
Arthi (220)	Mandal	Balh
Badsu (205)	Badsu	Balh
Bag (181)	Balt (SDR)	Balh
Bagla (206)	Chalah (SDR)	Balh
Bairi (178)	Bairi (REW)	Balh
Balt (182)	Balt (SDR)	Balh
Banaun (143)	Sidhyani (REW)	Balh
Banaun Kothi (171)	Halyatar (REW)	Balh
Barswan (147)	Barswan (REW)	Balh
Batahan (92)	Kothi Gehri Sdr	Mandi Sadar
Behl (111)	Behali (REW)	Balh
Behna (210)	Behna	Balh
Bhalwali (195)	Galma (SDR)	Balh
Bhangrotu (221)	-	Balh
Bhiura (284)	Nalsar	Balh
Bhuryal (211)	Bhadyal (SDR)	Balh
Brahal (203)	Badsu	Balh
Burhali (168)	Halyatar (REW)	Balh
Bushaihr (194)	Troh (SDR)	Balh
Chaahri (132)	Lower Rewalsar	Balh
Chadyara (246)	Sanyahardh	Mandi Sadar
Chalah (207)	Chalah (SDR)	Balh
Chandial (213)	Chandyal	Balh
Chatror (293)	Sakroha (SDR)	Balh
Chauki Chandrahan (98)	Sardhwar (REW)	Mandi Sadar
Chawri (288)	Kehad (SDR)	Balh
Chhajwali (160)	Dashera	Balh
Chhajwana - Ra -Khabu (96)	Dusra Khabu	Mandi Sadar
Chhatru (218)	Kummi (SDR)	Balh

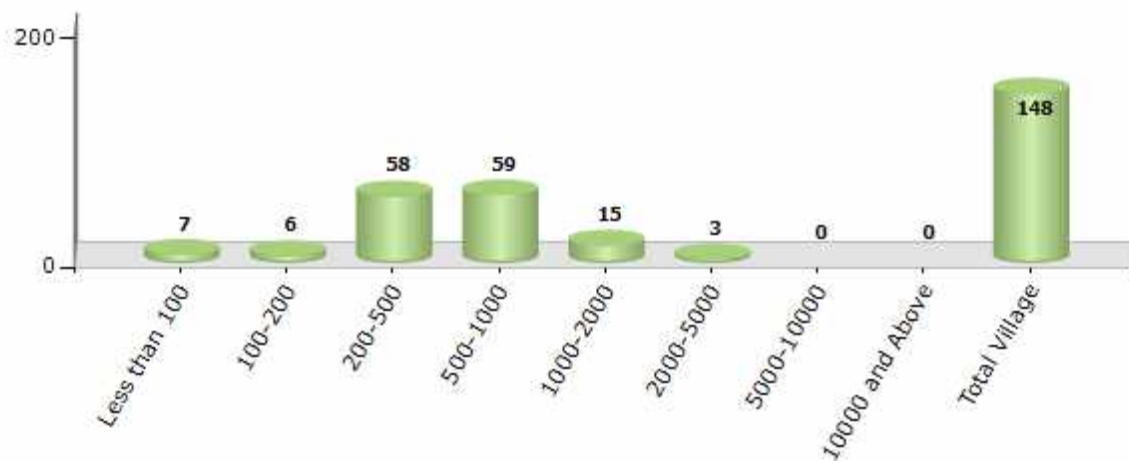
Contd....

## Demographics

### Number of Villages by Population Size - 2011

Less than 100	100-200	200-500	500-1000	1000-2000	2000-5000	5000-10000	10000 and Above	Total Village
7	6	58	59	15	3	0	0	148

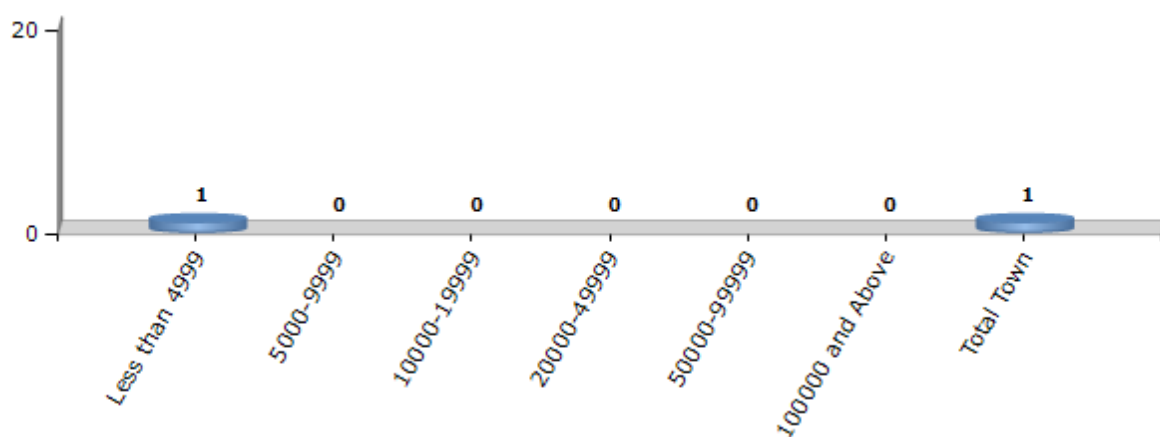
Number of Villages by Population Size - 2011



### Number of Towns by Population Size - 2011

Less than 4999	5000-9999	10000-19999	20000-49999	50000-99999	100000 and Above	Total Town
1	0	0	0	0	0	1

Number of Towns by Population Size - 2011

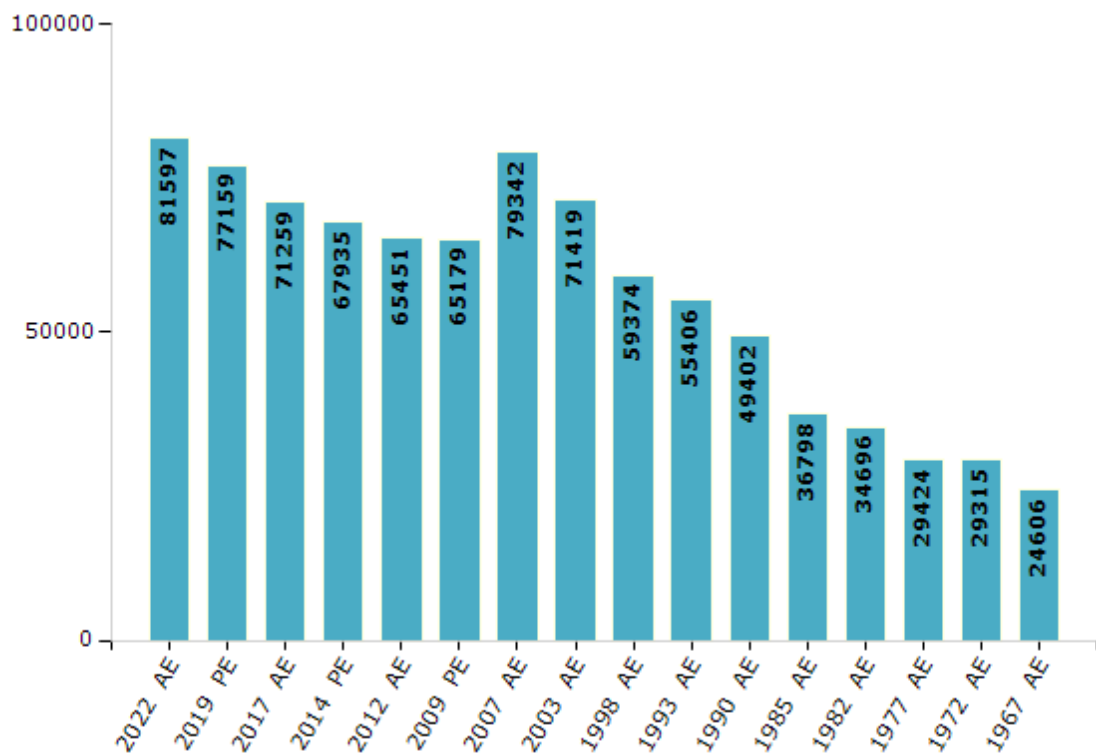


## Electoral Features

### Electors by Male & Female

Year	Male	Female	Others	Total	Year	Male	Female	Others	Total
2022 AE	40844	40753	0	81597	1998 AE	29560	29814	-	59374
2019 PE	38670	38489	0	77159	1993 AE	27960	27446	-	55406
2017 AE	35744	35515	0	71259	1990 AE	25059	24343	-	49402
2014 PE	34145	33790	0	67935	1985 AE	18739	18059	-	36798
2012 AE	33058	32393	0	65451	1982 AE	17427	17269	-	34696
2009 PE	32781	32398	-	65179	1977 AE	15185	14239	-	29424
2007 AE	39815	39527	-	79342	1972 AE	15079	14236	-	29315
2004 PE	-	-	-	-	1967 AE	-	-	-	24606
2003 AE	35917	35502	-	71419	1952 AE	-	-	-	-
1999 PE	-	-	-	-					

Number of Electors



Note : AE : Assembly Election, PE : Assembly Segment of Parliamentary Election

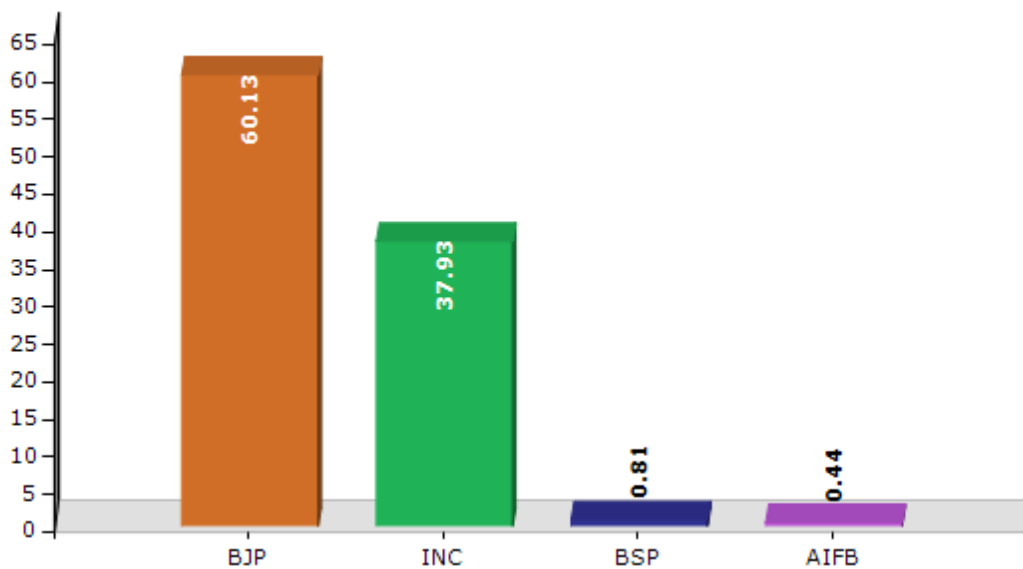


## Historical Summary Election Results

### Summary Result of Assembly Election - 2017

Candidate Name	Party	Votes	Votes %
Inder Singh	BJP	34704	60.13
Prakash Chaudhary	INC	21893	37.93
Prem Kumar Hawal	BSP	466	0.81
Rajender Paul Kashav	AIFB	253	0.44
	NOTA	403	0.7

Votes Percentage of Top Parties - 2017



## Polling Station Level Election Results

### Number and Name of Polling Stations (PS) (2022)

Number of Polling Stations	Name of Polling Stations	Number of Polling Stations	Name of Polling Stations
1	Batahan	22	Patha
2	Gambhar Khadd	23	Gurkotha
3	Sardhwar	24	Samahani 1
4	Darvyas	25	Samahani 2
5	Serla Khabu	26	Leda
6	Chhajwana Ra Khabu	27	Dasehara 1
7	Dusara Khabu	28	Dasehara 2
8	Chowki Chandrahan	29	Halyatar
9	Reur	30	Burahali
10	Luhardi	31	Dhar
11	Rewalsar 1	32	Banoun Kothi
12	Rewalsar 2	33	Taryambla
13	Sarkidhar	34	Gharwasra
14	Chahari	35	Gharyatar
15	Dhar 1	36	Luhakhar 1
16	Dhar 2	37	Luhakhar 2
17	Sidhyani	38	Beri
18	Sadehara	39	Kothi
19	Dahnu	40	Balt 1
20	Lakhwan	41	Balt 2
21	Samlon	42	Soyara 1

Contd....

## Polling Station Level Election Results

### Polling Station-wise Votes Secured by Overall Top Five Parties in Balh Assembly in Assembly Election (AE) under Mandi Parliamentary Constituency in Himachal Pradesh (2022)

Number of Polling Station	Winner - Inder Singh (BJP)	Runner-up - Prakash Chaudhary (INC)	3rd - Tara Chand (AAP)	4th - Prof. Prem Kumar Hawal (BSP)	5th - Jiwan Ram (RTRYDVBHMP)	NOTA	Other	Total Votes Secured
36	208	218	2	1	2	2	0	433
37	334	252	1	7	3	5	0	602
38	330	324	4	2	2	2	0	664
39	337	235	5	1	0	10	0	588
40	299	407	19	5	1	2	0	733
41	414	420	3	0	3	1	0	841
42	358	311	6	4	1	1	0	681
43	255	288	1	1	1	1	0	547
44	301	295	8	6	2	9	0	621
45	243	183	5	1	1	2	0	435
46	328	253	7	0	0	0	0	588
47	272	166	15	1	2	5	0	461
48	151	144	1	0	0	2	0	298
49	441	364	19	2	1	5	0	832
50	409	449	16	17	1	8	0	900
51	155	374	16	51	0	3	0	599
52	372	266	10	2	1	8	0	659
53	228	275	0	5	0	1	0	509
54	324	638	12	4	0	3	0	981
55	374	478	10	3	0	2	0	867
56	324	418	17	12	3	11	0	785
57	264	215	5	0	0	7	0	491
58	376	155	4	3	3	4	0	545
59	401	244	13	5	5	4	0	672
60	502	248	1	0	2	8	0	761
61	307	223	8	2	9	4	0	553
62	290	154	8	1	11	6	0	470
63	480	342	11	5	8	5	0	851
64	223	53	1	0	4	0	0	281
65	415	575	8	7	4	5	0	1014
66	188	209	38	0	3	1	0	439
67	289	354	1	1	0	8	0	653
68	274	274	6	0	0	4	0	558
69	239	313	14	5	2	6	0	579
70	276	155	3	1	2	5	0	442

Contd....

## Polling Station Level Election Results

### Winner, Runner-up and 3rd Party Position & Winning Margin According to Polling Stations in Balh Assembly in Assembly Election (AE) under Mandi Parliamentary Constituency in Himachal Pradesh (2022)

Polling Station Number	Winner Party	Winner Votes (%)	Runner-up Party	Runner-up Votes (%)	Winning Margin Votes (%)	Third Party	Third Party Votes (%)	Other Votes (%)
71	BJP	298 (53.31)	INC	246 (44.01)	52 (9.3)	RTRYDVBHMP	7 (1.25)	8 (1.43)
72	INC	537 (67.13)	BJP	252 (31.5)	285 (35.63)	AAP	3 (0.38)	8 (1)
73	INC	303 (55.19)	BJP	238 (43.35)	65 (11.84)	AAP	2 (0.36)	6 (1.09)
74	BJP	401 (62.95)	INC	227 (35.64)	174 (27.31)	BSP	3 (0.47)	6 (0.94)
75	INC	314 (49.92)	BJP	292 (46.42)	22 (3.5)	AAP	8 (1.27)	15 (2.38)
76	BJP	411 (54.15)	INC	331 (43.61)	80 (10.54)	RTRYDVBHMP	6 (0.79)	11 (1.45)
77	INC	254 (67.55)	BJP	101 (26.86)	153 (40.69)	AAP	9 (2.39)	12 (3.19)
78	INC	269 (53.16)	BJP	224 (44.27)	45 (8.89)	AAP	10 (1.98)	3 (0.59)
79	INC	379 (54.69)	BJP	309 (44.59)	70 (10.1)	BSP	1 (0.14)	4 (0.58)
80	INC	445 (69.64)	BJP	185 (28.95)	260 (40.69)	AAP	3 (0.47)	6 (0.94)
81	BJP	316 (50.24)	INC	290 (46.1)	26 (4.14)	RTRYDVBHMP	11 (1.75)	12 (1.91)
82	BJP	377 (51.08)	INC	333 (45.12)	44 (5.96)	RTRYDVBHMP	17 (2.3)	11 (1.49)
83	BJP	383 (55.35)	INC	268 (38.73)	115 (16.62)	AAP	34 (4.91)	7 (1.01)
84	INC	251 (50)	BJP	221 (44.02)	30 (5.98)	AAP	24 (4.78)	6 (1.2)
85	INC	316 (49.92)	BJP	290 (45.81)	26 (4.11)	RTRYDVBHMP	7 (1.11)	20 (3.16)
86	BJP	426 (54.69)	INC	319 (40.95)	107 (13.74)	AAP	20 (2.57)	14 (1.8)
87	BJP	340 (56.38)	INC	200 (33.17)	140 (23.21)	AAP	50 (8.29)	13 (2.16)
88	BJP	316 (57.35)	INC	171 (31.03)	145 (26.32)	AAP	53 (9.62)	11 (2)
89	INC	396 (66.11)	BJP	170 (28.38)	226 (37.73)	RTRYDVBHMP	25 (4.17)	8 (1.34)
90	INC	378 (55.26)	BJP	296 (43.27)	82 (11.99)	AAP	5 (0.73)	5 (0.73)
91	INC	406 (46.24)	AAP	242 (27.56)	164 (18.68)	BJP	210 (23.92)	20 (2.28)
92	BJP	300 (48.15)	INC	294 (47.19)	6 (0.96)	AAP	18 (2.89)	11 (1.77)
93	BJP	202 (62.93)	INC	107 (33.33)	95 (29.6)	AAP	6 (1.87)	6 (1.87)
94	BJP	477 (50.74)	INC	431 (45.85)	46 (4.89)	BSP	11 (1.17)	21 (2.23)
95	BJP	422 (59.1)	INC	269 (37.68)	153 (21.42)	AAP	18 (2.52)	5 (0.7)
96	INC	321 (53.68)	BJP	245 (40.97)	76 (12.71)	AAP	23 (3.85)	9 (1.51)
97	BJP	426 (49.42)	INC	376 (43.62)	50 (5.8)	AAP	52 (6.03)	8 (0.93)
98	INC	159 (63.1)	BJP	90 (35.71)	69 (27.39)	AAP	2 (0.79)	1 (0.4)
99	BJP	336 (58.84)	INC	213 (37.3)	123 (21.54)	AAP	11 (1.93)	11 (1.93)
100	INC	253 (41.54)	BJP	199 (32.68)	54 (8.86)	AAP	147 (24.14)	10 (1.64)
101	INC	343 (51.89)	BJP	286 (43.27)	57 (8.62)	AAP	26 (3.93)	6 (0.91)
102	INC	246 (56.94)	BJP	178 (41.2)	68 (15.74)	RTRYDVBHMP	3 (0.69)	5 (1.16)
103	BJP	368 (52.5)	INC	305 (43.51)	63 (8.99)	AAP	15 (2.14)	13 (1.85)
104	BJP	320 (53.42)	INC	267 (44.57)	53 (8.85)	BSP	3 (0.5)	9 (1.5)
105	INC	436 (49.21)	BJP	367 (41.42)	69 (7.79)	AAP	68 (7.67)	15 (1.69)

Contd....

## Socio-Economic Amenities - Rural

### Access to Education Facilities

Particulars	Number of Villages (% of Population)				
	Available	Not Available	If Not Available (Distance of Nearest Facility)		
			A	B	C
Govt. Primary School	106 (82)	42 (18)	36 (14)	2 (0)	0 (0)
Private Primary School	18 (24)	130 (76)	1 (1)	0 (0)	0 (0)
Govt. Middle School	51 (47)	97 (53)	85 (43)	5 (2)	0 (0)
Private Middle School	17 (18)	131 (82)	1 (1)	0 (0)	0 (0)
Govt. Secondary School	25 (24)	123 (76)	90 (53)	25 (15)	2 (0)
Private Secondary School	9 (11)	139 (89)	1 (1)	0 (0)	0 (0)
Govt. Senior Secondary School	16 (12)	132 (88)	85 (51)	37 (24)	3 (1)
Private Senior Secondary School	10 (15)	138 (85)	1 (1)	0 (0)	0 (0)
Govt. Arts and Science Degree College	0 (0)	148 (100)	3 (1)	20 (17)	124 (81)
Private Arts and Science Degree College	0 (0)	148 (100)	0 (0)	0 (0)	1 (1)
Govt. Engineering College	0 (0)	148 (100)	12 (8)	21 (17)	106 (70)
Private Engineering College	0 (0)	148 (100)	6 (4)	2 (1)	1 (1)
Govt. Medicine College	0 (0)	148 (100)	2 (1)	9 (10)	135 (88)
Private Medicine College	0 (0)	148 (100)	0 (0)	0 (0)	2 (1)
Govt. Management Institute	0 (0)	148 (100)	1 (1)	12 (12)	123 (81)
Private Management Institute	0 (0)	148 (100)	0 (0)	1 (1)	11 (5)
Govt. Polytechnic	0 (0)	148 (100)	4 (2)	16 (14)	124 (81)
Private Polytechnic	0 (0)	148 (100)	4 (3)	0 (0)	0 (0)
Govt. Vocational Training School/ITI	0 (0)	148 (100)	2 (1)	15 (15)	131 (84)
Private Vocational Training School/ITI	0 (0)	148 (100)	0 (0)	0 (0)	0 (0)
Govt. Non Formal Training Centre	0 (0)	148 (100)	7 (5)	17 (16)	120 (73)
Private Non Formal Training Centre	2 (5)	146 (95)	0 (0)	0 (0)	2 (1)
Govt. School For Disabled	0 (0)	148 (100)	1 (1)	17 (13)	122 (80)
Private School For Disabled	0 (0)	148 (100)	6 (4)	2 (2)	0 (0)
Government Others	0 (0)	148 (100)	0 (0)	0 (0)	0 (0)
Private Others	1 (1)	147 (99)	0 (0)	0 (0)	0 (0)

Note : Distance A : Less than 5 km; B : Between 5-10 km; C : 10+ km.; Source : Data Analysis is based on 2011 Census.

## DISCLAIMER

The Terms of Use and Disclaimer of Datanet India Private Limited (hereinafter referred to as "Datanet") for use of this analysis report of **Balh Assembly Constituency (Balh Vidhan Sabha)** :-

1. **Assembly Factbook™** is a Registered Trade Mark owned by Datanet.
2. All the maps are sketched and graphical representation only and have not been drawn to the scale and also not to represent the actual geographical area or boundary of the unit.
3. The data for the aforesaid analysis is based on authentic sources and has been culled from the various publications of Census, CSO and NSSO for district and block level data, various central and state government departments, Central & State Elections Commissions and the concerned Returning Officers' releases, Electoral Rolls, Election results and allied publications, internal assessment, surveys, estimates and analysis. Therefore, certain adjustment of data at micro level may have been done to arrive closer to the macro data.
4. Data have been provided on an "As Is" and "As AVAILABLE" basis
5. The colours shown in the maps or diagram and charts of a particular party, alliance or AC are indicative and do not represent them.
6. This publication which includes maps, sheets, graphs and data would be the property under copyright of Datanet only. The user may use these for its internal study, analysis and research purposes. It's public display, re-selling or any commercial uses by the user are not allowed.
7. Datanet has taken due care and caution in compilation and processing of data and allied information, but does not guarantee the accuracy, adequacy or completeness of any information/analysis and will be not responsible for any errors or omissions or for the results obtained from the use of such information/analysis.
8. All the contents for the publication have been culled from various authentic sources and Datanet reasonably believes such sources to be reliable, but does not make any representations, express or implied as to the accuracy or fitness of use of such information. The information or contents of the information/analysis do not constitute advice and should not be relied upon in making (or refraining from making) any decision. Any reliance placed upon the information provided by Datanet is the sole responsibility and strictly at the user's risk.
9. In no event will Datanet be liable for any damages (including, without limitation, damages for loss of business projects, or loss of profits) arising in contract, tort or otherwise from the use of or inability to use any of its contents, or from any action taken (or refrained from being taken) as a result of using the analysis or any of its contents. Datanet its directors, owners, editors, officials, employees, distributor and agents or any associate will not be liable for any errors in the information contained or any consequences arising from the use of the contents of the provided information/analysis.
10. If any provision of these terms and conditions is held invalid or illegal or unenforceable for any reason by any court of competent jurisdiction, such provision shall be severed and the remainder of provisions of the terms and conditions shall continue in full force and effect as if the Term of Use had been executed with the invalid, illegal or unenforceable provision eliminated.
11. If there are any discrepancies in the information provided, please bring it to attention of Datanet for suitable rectification measures.



Buy Online This Complete Book At  
**Datanet India eBooks Store**

[www.indiastatpublications.com](http://www.indiastatpublications.com)

or go directly at

[http://www.indiastatpublications.com/  
Assembly\\_factbook/Himachal Pradesh/Mandi/ Balh](http://www.indiastatpublications.com/Assembly_factbook/Himachal%20Pradesh/Mandi/Balh)

 **indiastat**elections

ISBN : 978-93-5822-690-4



9 789358 226904