



Himachal Pradesh

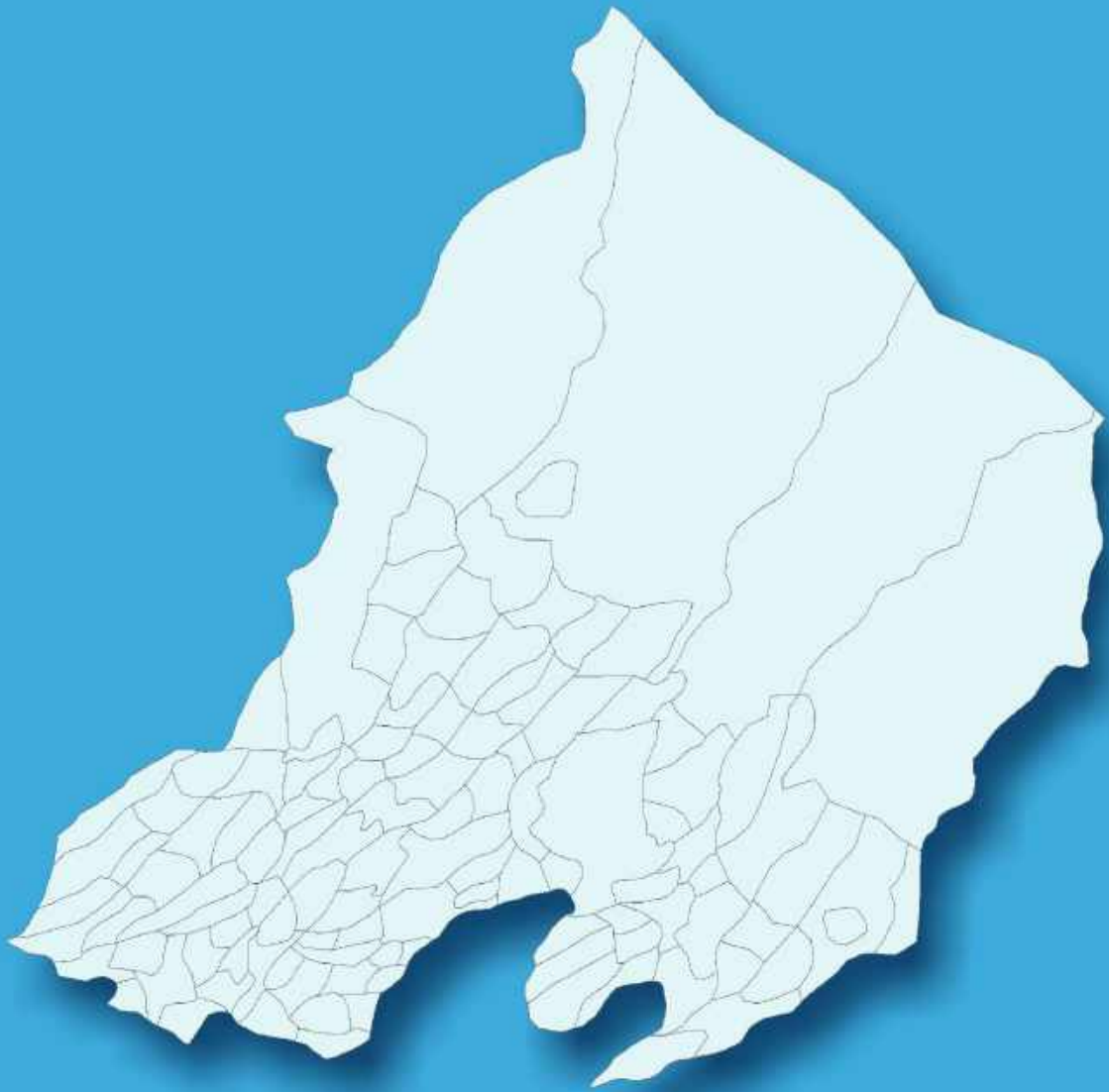
Assembly Factbook™

Dharamshala Assembly Constituency



Key Electoral Data of Dharamshala
Assembly Constituency (Vidhan Sabha)

Himachal Pradesh
Assembly FactbookTM
Dharamshala Assembly Constituency



Dharamshala Vidhan Sabha

Editor & Director

Dr. R.K. Thukral

Research Editor

Dr. Shafeeq Rahman

Compiled, Researched and Published by Datanet India Pvt. Ltd.

D-100, 1st Floor,

Okhla Industrial Area, Phase-I,

New Delhi- 110020.

Ph.: 91-11- 43580781-84

Email : support@indiastatpublications.com

Website : www.indiastatelections.com

Online Book Store :

www.indiastatpublications.com

Report No. : AFB/HP-18-0125

ISBN : 978-93-5822-905-9

First Edition : January, 2018

Eighth Updated Edition : January, 2025

Price : Rs.11500/-

US\$ 310

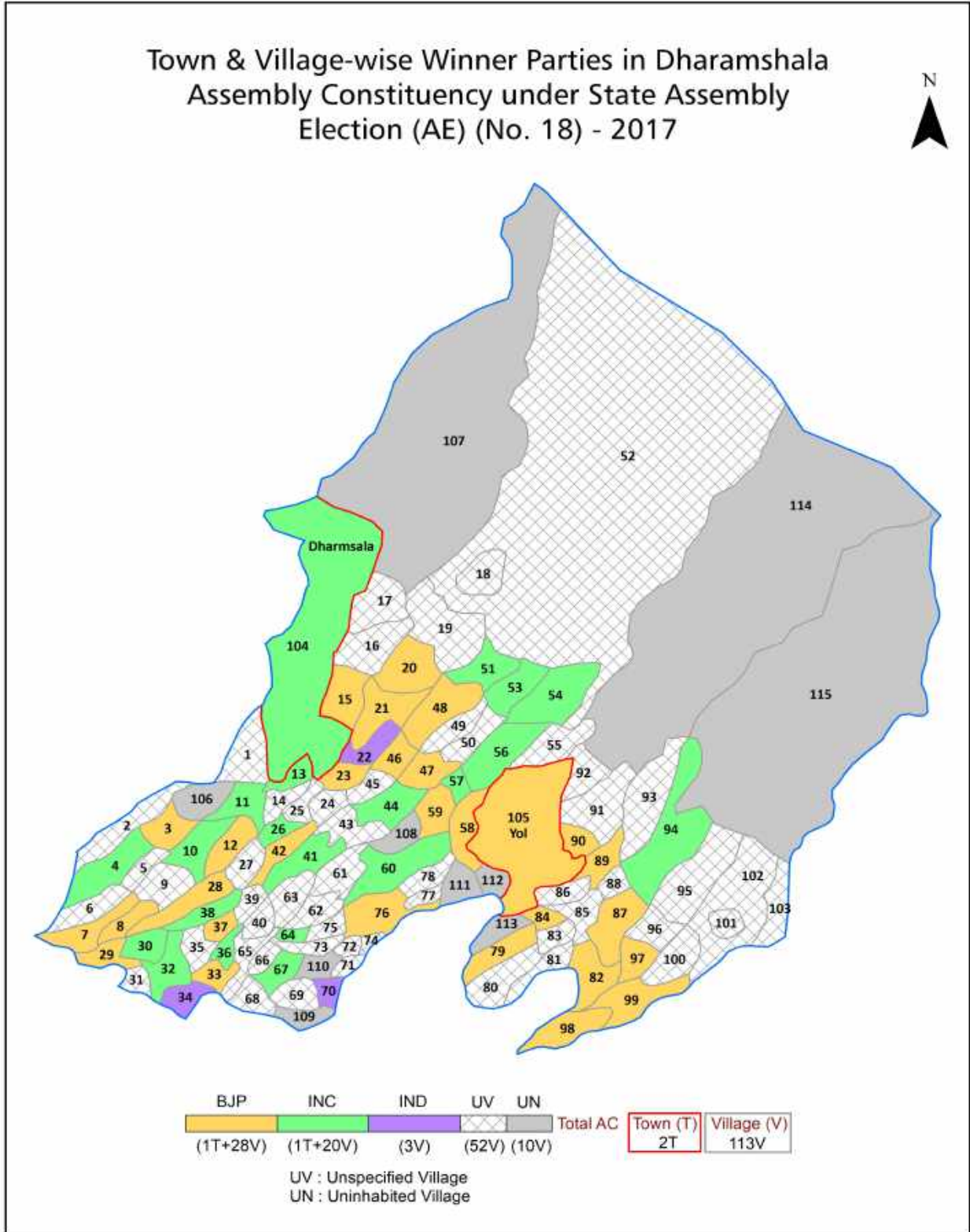
© **Datanet India Pvt. Ltd.**

All rights reserved. No part of this book may be reproduced, stored in a retrieval system or transmitted in any form or by any means, mechanical photocopying, photographing, scanning, recording or otherwise without the prior written permission of the publisher. Please refer to Disclaimer at page no. 133 for the use of this publication.

Printed in India

No.	Particulars	Page No.
	Introduction	
1	Assembly Constituency - (Vidhan Sabha) at a Glance Features of Assembly as per Delimitation Commission of India (2008)	1-2
	Location and Political Maps	
2	Location Map Boundaries of Assembly Constituency - (Vidhan Sabha) in District Boundaries of Assembly Constituency under Parliamentary Constituency - (Lok Sabha) Town & Village-wise Winner Parties- 2024, 2022, 2019, 2017, 2014, 2012 and 2009	3-11
	Administrative Setup (2011)	
3	District Sub-district Towns Villages Inhabited Villages Uninhabited Villages Village Panchayat Intermediate Panchayat	12-18
	Demographics (2011)	
4	Population Households Rural/Urban Population Towns and Villages by Population Size Sex Ratio (Total & 0-6 Years) Religious Population Social Population Literacy Rate	19-20
	Electoral Features	
5	Important Dates of Last Elections Held Electors by Gender Service Electors Voters Voters Turnout Polling Stations & Average Number of Electors per Polling Station Electors by Age Group Present Elected Representatives	21-26
	Historical Summary Election Results	
6	Vote Share of Major Parties Winning Margin (Number & Percentage) Polarity of Parties Summary Result of Assembly Segment of Parliamentary Elections 2024, 2019, 2014, 2009, 2004 and 1999 Summary Result of Assembly Elections 2022, 2017, 2012, 2007, 2003, 1998, 1993, 1990, 1985, 1982, 1977, 1972 and 1967	27-48
	Polling Station Level Election Results	
7	Name and Number of Polling Station 2024, 2022, 2019, 2017, 2014, 2012 and 2009 Polling Station-wise Electors, Voters & Voters Turnout 2024, 2022, 2019, 2017, 2014, 2012 and 2009 Polling Station wise Elections Results 2024, 2022, 2019, 2017, 2014, 2012 and 2009	49-113
	Share of Assembly Constituency	
8	Share of Assembly Constituency - (Vidhan Sabha) in State, District and Parliamentary Constituency - (Lok Sabha)	114
	Socio-Economic Amenities (2011)	
9	Access to Administrative Units Agricultural, Manufacturing and Industrial Commodities Demographic Indicators Education Health & Manpower Drinking Water Supply Sanitation Entertainment and Recreations Infrastructure Power Food Allocation Distribution and Marketing of Agriculture Commodities Infrastructure Transport and Road Infrastructure Communication Banking and Financial Services Land Use Irrigation Source	116-130
10	Abbreviation & Sources	131-132
11	Disclaimer	133

Location & Political Map



Administrative Setup

List of Village Panchayat & Intermediate Panchayat (Block) Name - 2011

Village Name	Village Panchayat Name	Intermediate Panchayat Name
Andrar (504)	Tang Narwana	Dharmsala
Anjani (479)	Barwala	Dharmsala
Baghni (390)	Baghni	Dharmsala
Bagiarra (502)	Kand Kardiana	Dharmsala
Bagli (410)	Bagli	Dharmsala
Bahl (324)	Kareri	Rait
Balehr Khas (505)	Paddar	Nagrota Bagwan
Balla (511)	Paddar	Nagrota Bagwan
Banwala (355)	Chetru	Dharmsala
Bara Khola (476)	Jhiyol	Dharmsala
Barwala Khas (484)	Barwala	Dharmsala
Bhadrolu (475)	Mandal	Dharmsala
Bhatehr (387)	Passu	Dharmsala
Bhatehr (523)	Balla Jadrangal	Nagrota Bagwan
Braih (492)	Kaned	Dharmsala
Buhli Tangroti (520)	Tangroti	Dharmsala
Chakban Banwala (356)	Chetru	Dharmsala
Chakban Dugbar (404)	Dhagwar	Dharmsala
Chakban Ghanyara (371)	Sounkni Da Kot	Dharmsala
Chakban Ghiana Kalan (480)	Barwala	Dharmsala
Chakban Kardiana (499)	Kand Kardiana	Dharmsala
Chelian (361)	Tahu	Dharmsala
Chetru (354)	Chetru	Dharmsala
Chhainti (491)	Barwala	Dharmsala
Chhatair (494/1)	Tangroti	Dharmsala
Chhatair (495)	Tangroti	Dharmsala
Chohla (368)	Tahu	Dharmsala
Dehru (401)	Passu	Dharmsala
Diktu (486)	Jhiyol	Dharmsala

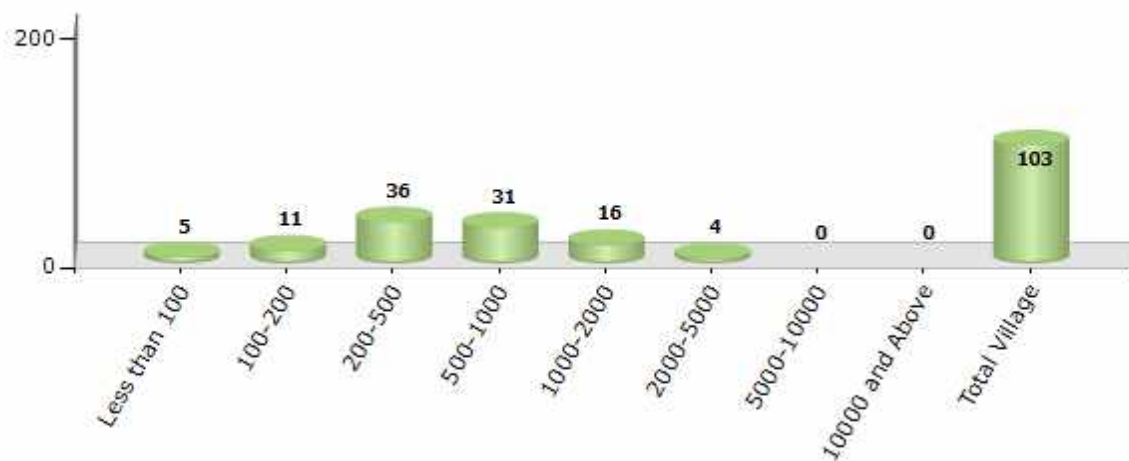
Contd....

Demographics

Number of Villages by Population Size - 2011

Less than 100	100-200	200-500	500-1000	1000-2000	2000-5000	5000-10000	10000 and Above	Total Village
5	11	36	31	16	4	0	0	103

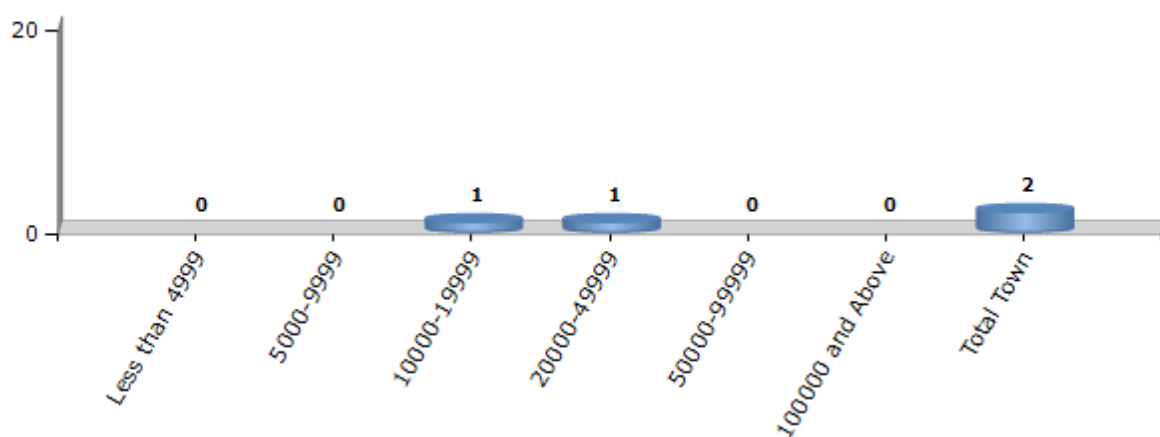
Number of Villages by Population Size - 2011



Number of Towns by Population Size - 2011

Less than 4999	5000-9999	10000-19999	20000-49999	50000-99999	100000 and Above	Total Town
0	0	1	1	0	0	2

Number of Towns by Population Size - 2011

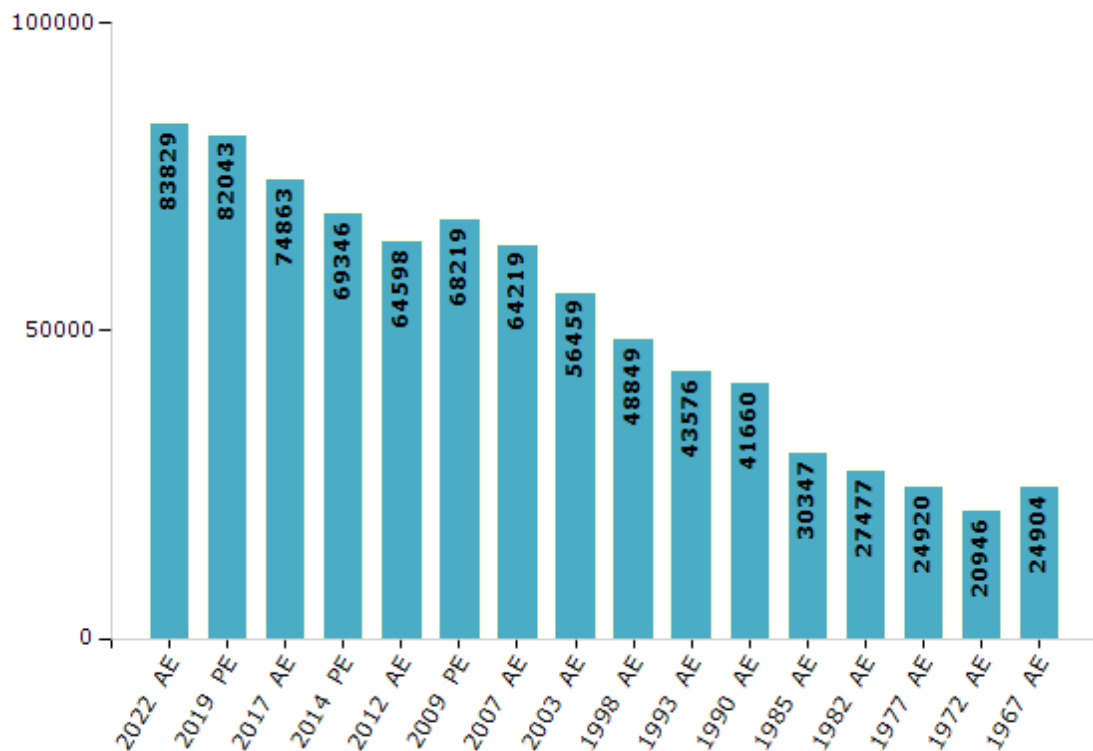


Electoral Features

Electors by Male & Female

Year	Male	Female	Others	Total	Year	Male	Female	Others	Total
2022 AE	42359	41469	1	83829	1998 AE	24628	24221	-	48849
2019 PE	41934	40109	0	82043	1993 AE	21800	21776	-	43576
2017 AE	38320	36543	0	74863	1990 AE	21687	19973	-	41660
2014 PE	36241	33105	0	69346	1985 AE	15330	15017	-	30347
2012 AE	33693	30905	0	64598	1982 AE	13955	13522	-	27477
2009 PE	34906	33313	-	68219	1977 AE	13221	11699	-	24920
2007 AE	32671	31548	-	64219	1972 AE	10871	10075	-	20946
2004 PE	-	-	-	-	1967 AE	-	-	-	24904
2003 AE	28719	27740	-	56459	1952 AE	-	-	-	-
1999 PE	-	-	-	-					

Number of Electors



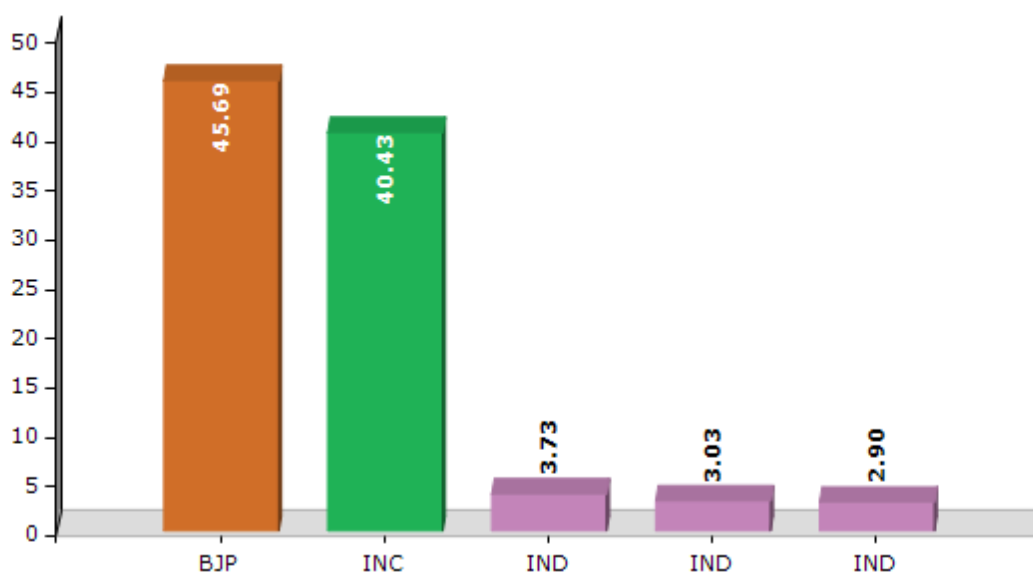
Note : AE : Assembly Election, PE : Assembly Segment of Parliamentary Election

Historical Summary Election Results

Summary Result of Assembly Election - 2017

Candidate Name	Party	Votes	Votes %
Kishan Kapoor	BJP	26050	45.69
Sudhir Sharma	INC	23053	40.43
Ravinder Rana	IND	2127	3.73
Pankaj Kumar (Panku)	IND	1726	3.03
Kamal Kumar	IND	1655	2.9
Pawan Choudhary	BSP	471	0.83
Ashwani Kajal	BMUP	307	0.54
Digvijay Puri	IND	285	0.5
Vikas Chaudhary	IND	281	0.49
Anup Dhiman	IND	273	0.48
Nisha Katoch	SWAP	133	0.23
Subhash Chand Shukla	IND	127	0.22
	NOTA	525	0.92

Votes Percentage of Top Parties - 2017



Polling Station Level Election Results

Number and Name of Polling Stations (PS) (2022)

Number of Polling Stations	Name of Polling Stations	Number of Polling Stations	Name of Polling Stations
1	Dharamkot	22	Chohala
2	Bhagsunag 1	23	Dari 1
3	Bhagsunag 2	24	Dari 2
4	Gamru	25	Dari 3
5	Dharamshala 1	26	Dari 4
6	Forsythganj	27	Hodal
7	Dharmshala 2	28	Ghaniara 1
8	Dharmshala 3	29	Thathari
9	Dharmshala 4	30	Ghaniara 2
10	Depot Bazar	31	Patohla 1 (Ghaniara)
11	Chilgari	32	Patohla 2 (Ghaniara)
12	Khajanchi Mohalla	33	Ghaniara 3
13	Civil Lines	34	Ghaniyara 4
14	Ramnagar 1	35	Sidhpur 1
15	Ram Nagar 2	36	Sidhpur 2
16	Shyam Nagar 1	37	Garh (Sukkar)
17	Shyam Nagar 2	38	Sheela 1
18	Badol 1	39	Sheela 2
19	Badol 2	40	Chelian
20	Badol 3	41	Sakoh 1
21	Kand	42	Sakoh 2 (Uprehar)

Contd....

Polling Station Level Election Results

Polling Station-wise Votes Secured by Overall Top Five Parties in Dharamshala Assembly in Assembly Election (AE) under Kangra Parliamentary Constituency in Himachal Pradesh (2022)

Number of Polling Station	Winner - Sudhir Sharma (INC)	Runner-up - Rakesh Choudhary (BJP)	3rd - Vipin Nehria (IND)	4th - Kulwant Singh Rana (AAP)	5th - Subhash Chand Shukla (IND)	NOTA	Other	Total Votes Secured
36	460	150	193	11	2	7	5	828
37	368	593	39	4	5	11	1	1021
38	249	506	54	1	2	17	1	830
39	236	568	13	6	0	7	1	831
40	296	213	14	3	2	3	2	533
41	226	460	25	4	1	6	0	722
42	412	389	73	6	1	8	1	890
43	420	283	35	2	2	2	0	744
44	371	388	9	3	2	1	1	775
45	403	179	50	2	2	4	2	642
46	113	350	13	4	1	7	0	488
47	238	390	16	8	3	6	1	662
48	237	308	45	4	0	6	1	601
49	234	537	0	2	0	2	0	775
50	307	387	7	4	2	6	1	714
51	393	508	20	1	3	7	1	933
52	213	267	5	4	0	2	0	491
53	361	408	9	3	1	5	0	787
54	223	387	9	4	3	8	0	634
55	237	102	10	5	1	5	2	362
56	224	390	11	5	1	4	0	635
57	279	391	25	6	0	11	1	713
58	325	558	6	3	1	6	0	899
59	262	345	2	1	0	2	0	612
60	151	258	11	2	0	2	1	425
61	220	718	9	2	1	8	3	961
62	219	485	18	3	1	4	1	731
63	295	463	18	4	0	9	0	789
64	237	249	76	4	1	4	1	572
65	204	172	52	4	1	3	0	436
66	379	98	77	12	0	2	0	568
67	284	173	13	7	0	6	0	483
67A	470	118	268	12	7	3	4	882
68	365	67	178	2	8	3	2	625
69	114	35	31	0	0	0	0	180

Contd....

Polling Station Level Election Results

Winner, Runner-up and 3rd Party Position & Winning Margin According to Polling Stations in Dharamshala Assembly in Assembly Election (AE) under Kangra Parliamentary Constituency in Himachal Pradesh (2022)

Polling Station Number	Winner Party	Winner Votes (%)	Runner-up Party	Runner-up Votes (%)	Winning Margin Votes (%)	Third Party	Third Party Votes (%)	Other Votes (%)
70	INC	330 (42.36)	IND (VN)	310 (39.79)	20 (2.57)	BJP	123 (15.79)	16 (2.05)
71	INC	215 (60.06)	IND (VN)	105 (29.33)	110 (30.73)	BJP	37 (10.34)	1 (0.28)
72	INC	386 (43.37)	IND (VN)	325 (36.52)	61 (6.85)	BJP	162 (18.2)	17 (1.91)
73	INC	355 (47.02)	BJP	285 (37.75)	70 (9.27)	IND (VN)	100 (13.25)	15 (1.99)
74	BJP	420 (65.02)	INC	198 (30.65)	222 (34.37)	IND (VN)	16 (2.48)	12 (1.86)
75	INC	258 (44.03)	BJP	247 (42.15)	11 (1.88)	IND (VN)	67 (11.43)	14 (2.39)
76	BJP	283 (55.71)	INC	196 (38.58)	87 (17.13)	IND (VN)	26 (5.12)	3 (0.59)
77	INC	360 (44.06)	BJP	331 (40.51)	29 (3.55)	IND (VN)	113 (13.83)	13 (1.59)
78	BJP	451 (61.78)	INC	239 (32.74)	212 (29.04)	IND (VN)	31 (4.25)	9 (1.23)
79	IND (VN)	386 (55.62)	INC	237 (34.15)	149 (21.47)	BJP	49 (7.06)	22 (3.17)
80	INC	292 (45.77)	BJP	212 (33.23)	80 (12.54)	IND (VN)	121 (18.97)	13 (2.04)
81	BJP	349 (50.8)	INC	262 (38.14)	87 (12.66)	IND (VN)	67 (9.75)	9 (1.31)
82	BJP	265 (52.68)	INC	188 (37.38)	77 (15.3)	IND (VN)	32 (6.36)	18 (3.58)
83	BJP	497 (57.99)	INC	323 (37.69)	174 (20.3)	IND (VN)	20 (2.33)	17 (1.98)
84	BJP	502 (74.15)	INC	161 (23.78)	341 (50.37)	IND (VN)	7 (1.03)	7 (1.03)
85	INC	303 (50.17)	BJP	246 (40.73)	57 (9.44)	IND (VN)	48 (7.95)	7 (1.16)
86	BJP	218 (48.66)	INC	189 (42.19)	29 (6.47)	IND (VN)	35 (7.81)	6 (1.34)
87	INC	358 (40.13)	BJP	349 (39.13)	9 (1)	IND (VN)	167 (18.72)	18 (2.02)
88	INC	311 (48.59)	BJP	266 (41.56)	45 (7.03)	IND (VN)	57 (8.91)	6 (0.94)
89	INC	338 (46.11)	IND (VN)	312 (42.56)	26 (3.55)	BJP	58 (7.91)	25 (3.41)
Total Dharamshala AC	INC	26689 (45.4)	BJP	23563 (40.08)	3126 (5.32)	IND (VN)	7332 (12.47)	1206 (2.05)

Note : IND - VN : Vipan Nehria

Socio-Economic Amenities - Rural

Access to Education Facilities

Particulars	Number of Villages (% of Population)				
	Available	Not Available	If Not Available (Distance of Nearest Facility)		
			A	B	C
Govt. Primary School	68 (81)	35 (19)	32 (16)	0 (0)	0 (0)
Private Primary School	11 (19)	92 (81)	0 (0)	0 (0)	0 (0)
Govt. Middle School	39 (53)	64 (47)	55 (37)	0 (0)	0 (0)
Private Middle School	9 (12)	94 (88)	2 (3)	0 (0)	0 (0)
Govt. Secondary School	18 (24)	85 (76)	66 (56)	4 (2)	4 (3)
Private Secondary School	8 (12)	95 (88)	4 (5)	1 (1)	0 (0)
Govt. Senior Secondary School	12 (21)	91 (79)	79 (68)	8 (7)	1 (1)
Private Senior Secondary School	6 (13)	97 (87)	0 (0)	0 (0)	0 (0)
Govt. Arts and Science Degree College	0 (0)	103 (100)	13 (23)	52 (49)	30 (23)
Private Arts and Science Degree College	0 (0)	103 (100)	0 (0)	8 (5)	0 (0)
Govt. Engineering College	0 (0)	103 (100)	0 (0)	1 (1)	38 (34)
Private Engineering College	1 (2)	102 (98)	1 (1)	2 (0)	60 (62)
Govt. Medicine College	0 (0)	103 (100)	0 (0)	20 (16)	83 (84)
Private Medicine College	0 (0)	103 (100)	0 (0)	0 (0)	0 (0)
Govt. Management Institute	0 (0)	103 (100)	0 (0)	4 (2)	2 (1)
Private Management Institute	1 (2)	102 (98)	14 (23)	44 (44)	38 (28)
Govt. Polytechnic	0 (0)	103 (100)	0 (0)	17 (13)	85 (85)
Private Polytechnic	1 (2)	102 (98)	0 (0)	0 (0)	0 (0)
Govt. Vocational Training School/ITI	0 (0)	103 (100)	19 (24)	35 (33)	49 (44)
Private Vocational Training School/ITI	0 (0)	103 (100)	0 (0)	0 (0)	0 (0)
Govt. Non Formal Training Centre	0 (0)	103 (100)	14 (23)	52 (50)	37 (27)
Private Non Formal Training Centre	0 (0)	103 (100)	0 (0)	0 (0)	0 (0)
Govt. School For Disabled	0 (0)	103 (100)	14 (21)	56 (57)	33 (23)
Private School For Disabled	0 (0)	103 (100)	0 (0)	0 (0)	0 (0)
Government Others	0 (0)	103 (100)	0 (0)	0 (0)	103 (100)
Private Others	0 (0)	103 (100)	0 (0)	0 (0)	0 (0)

Note : Distance A : Less than 5 km; B : Between 5-10 km; C : 10+ km.; Source : Data Analysis is based on 2011 Census.

DISCLAIMER

The Terms of Use and Disclaimer of Datanet India Private Limited (hereinafter referred to as "Datanet") for use of this analysis report of **Dharamshala Assembly Constituency (Dharamshala Vidhan Sabha)** :-

1. **Assembly Factbook™** is a Registered Trade Mark owned by Datanet.
2. All the maps are sketched and graphical representation only and have not been drawn to the scale and also not to represent the actual geographical area or boundary of the unit.
3. The data for the aforesaid analysis is based on authentic sources and has been culled from the various publications of Census, CSO and NSSO for district and block level data, various central and state government departments, Central & State Elections Commissions and the concerned Returning Officers' releases, Electoral Rolls, Election results and allied publications, internal assessment, surveys, estimates and analysis. Therefore, certain adjustment of data at micro level may have been done to arrive closer to the macro data.
4. Data have been provided on an "As Is" and "As AVAILABLE" basis
5. The colours shown in the maps or diagram and charts of a particular party, alliance or AC are indicative and do not represent them.
6. This publication which includes maps, sheets, graphs and data would be the property under copyright of Datanet only. The user may use these for its internal study, analysis and research purposes. It's public display, re-selling or any commercial uses by the user are not allowed.
7. Datanet has taken due care and caution in compilation and processing of data and allied information, but does not guarantee the accuracy, adequacy or completeness of any information/analysis and will be not responsible for any errors or omissions or for the results obtained from the use of such information/analysis.
8. All the contents for the publication have been culled from various authentic sources and Datanet reasonably believes such sources to be reliable, but does not make any representations, express or implied as to the accuracy or fitness of use of such information. The information or contents of the information/analysis do not constitute advice and should not be relied upon in making (or refraining from making) any decision. Any reliance placed upon the information provided by Datanet is the sole responsibility and strictly at the user's risk.
9. In no event will Datanet be liable for any damages (including, without limitation, damages for loss of business projects, or loss of profits) arising in contract, tort or otherwise from the use of or inability to use any of its contents, or from any action taken (or refrained from being taken) as a result of using the analysis or any of its contents. Datanet its directors, owners, editors, officials, employees, distributor and agents or any associate will not be liable for any errors in the information contained or any consequences arising from the use of the contents of the provided information/analysis.
10. If any provision of these terms and conditions is held invalid or illegal or unenforceable for any reason by any court of competent jurisdiction, such provision shall be severed and the remainder of provisions of the terms and conditions shall continue in full force and effect as if the Term of Use had been executed with the invalid, illegal or unenforceable provision eliminated.
11. If there are any discrepancies in the information provided, please bring it to attention of Datanet for suitable rectification measures.

**Buy Online This Complete Book At
Datanet India eBooks Store**

www.indiastatpublications.com

or go directly at

[http://www.indiastatpublications.com/
Assembly_factbook/Himachal Pradesh/Kangra/ Dharamshala](http://www.indiastatpublications.com/Assembly_factbook/Himachal%20Pradesh/Kangra/Dharamshala)



i **india**stat**elections**

ISBN : 978-93-5822-905-9



9 789358 122905 9