



Himachal Pradesh

Assembly Factbook™

Jaswan-Pragpur Assembly Constituency



Key Electoral Data of Jaswan-Pragpur
Assembly Constituency (Vidhan Sabha)

Himachal Pradesh
Assembly FactbookTM
Jaswan-Pragpur Assembly Constituency



Jaswan-Pragpur Vidhan Sabha

Editor & Director

Dr. R.K. Thukral

Research Editor

Dr. Shafeeq Rahman

Compiled, Researched and Published by Datanet India Pvt. Ltd.

D-100, 1st Floor,

Okhla Industrial Area, Phase-I,

New Delhi- 110020.

Ph.: 91-11- 43580781-84

Email : support@indiastatpublications.com

Website : www.indiastatelections.com

Online Book Store :

www.indiastatpublications.com

Report No. : AFB/HP-11-0125

ISBN : 978-93-5822-899-1

First Edition : January, 2018

Eighth Updated Edition : January, 2025

Price : Rs.11500/-

US\$ 310

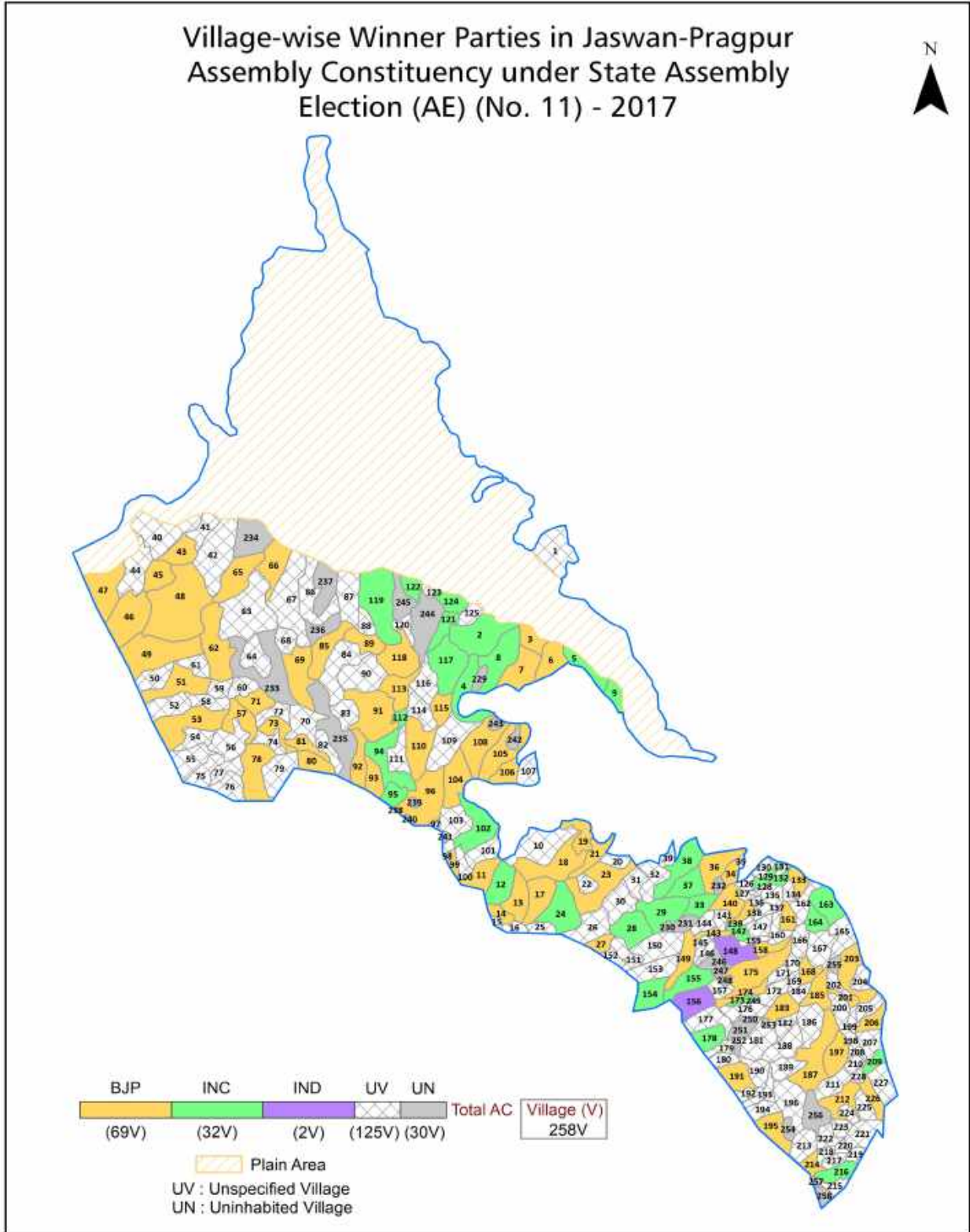
© **Datanet India Pvt. Ltd.**

All rights reserved. No part of this book may be reproduced, stored in a retrieval system or transmitted in any form or by any means, mechanical photocopying, photographing, scanning, recording or otherwise without the prior written permission of the publisher. Please refer to Disclaimer at page no. 151 for the use of this publication.

Printed in India

No.	Particulars	Page No.
	Introduction	
1	Assembly Constituency - (Vidhan Sabha) at a Glance Features of Assembly as per Delimitation Commission of India (2008)	1-2
	Location and Political Maps	
2	Location Map Boundaries of Assembly Constituency - (Vidhan Sabha) in District Boundaries of Assembly Constituency under Parliamentary Constituency - (Lok Sabha) Village-wise Winner Parties- 2024, 2022, 2019, 2017, 2014, 2012 and 2009	3-11
	Administrative Setup (2011)	
3	District Sub-district Towns Villages Inhabited Villages Uninhabited Villages Village Panchayat Intermediate Panchayat	12-23
	Demographics (2011)	
4	Population Households Rural/Urban Population Villages by Population Size Sex Ratio (Total & 0-6 Years) Religious Population Social Population Literacy Rate	24-25
	Electoral Features	
5	Important Dates of Last Elections Held Electors by Gender Service Electors Voters Voters Turnout Polling Stations & Average Number of Electors per Polling Station Electors by Age Group Present Elected Representatives	26-31
	Historical Summary Election Results	
6	Vote Share of Major Parties Winning Margin (Number & Percentage) Polarity of Parties Summary Result of Assembly Segment of Parliamentary Elections 2024, 2019, 2014, 2009, 2004 and 1999 Summary Result of Assembly Elections 2022, 2017, 2012, 2007, 2003, 1998, 1993, 1990, 1985, 1982, 1977, 1972 and 1967	32-53
	Polling Station Level Election Results	
7	Name and Number of Polling Station 2024, 2022, 2019, 2017, 2014, 2012 and 2009 Polling Station-wise Electors, Voters & Voters Turnout 2024, 2022, 2019, 2017, 2014, 2012 and 2009 Polling Station wise Elections Results 2024, 2022, 2019, 2017, 2014, 2012 and 2009	54-131
	Share of Assembly Constituency	
8	Share of Assembly Constituency - (Vidhan Sabha) in State, District and Parliamentary Constituency - (Lok Sabha)	132
	Socio-Economic Amenities (2011)	
9	Access to Administrative Units Agricultural, Manufacturing and Industrial Commodities Demographic Indicators Education Health & Manpower Drinking Water Supply Sanitation Entertainment and Recreations Infrastructure Power Food Allocation Distribution and Marketing of Agriculture Commodities Infrastructure Transport and Road Infrastructure Communication Banking and Financial Services Land Use Irrigation Source	134-148
10	Abbreviation & Sources	149-150
11	Disclaimer	151

Location & Political Map



Administrative Setup

List of Village Panchayat & Intermediate Panchayat (Block) Name - 2011

Village Name	Village Panchayat Name	Intermediate Panchayat Name
Aloh (271)	Aloh	Pragpur
Aloh Buhla (207)	Maniala	Pragpur
Aloh Chambyala (214)	Maniala	Pragpur
Aloh Parla (274)	Aloh	Pragpur
Amalehr (32)	Jandour	Pragpur
Amran (74)	Tipri	Pragpur
Amroh (13)	Amroh	Pragpur
Badhal (38)	Bari	Pragpur
Badhal Maira (31)	Jandour	Pragpur
Badnali (5)	Ghamrur	Pragpur
Badwar (282)	Punani	Pragpur
Bagli Jhikli (141)	Bagli Upperli	Pragpur
Bagli Uparli (144)	Bagli Upperli	Pragpur
Bairi (16)	Haler	Pragpur
Baldoh (193)	Sehri	Pragpur
Balehra (210)	Muhin	Pragpur
Balghar (105)	Landiara	Pragpur
Balyana (184)	Baliana	Pragpur
Ban Bilwan (2)	Ghati	Pragpur
Ban Naun (251)	Katoh	Pragpur
Ban Sadwan (197)	Banni	Pragpur
Banda (239)	Rakkar	Pragpur
Bandhol (36)	Bari	Pragpur
Bani (216)	Banni	Pragpur
Banori (42)	Rail	Pragpur
Bari (40)	Bari	Pragpur
Baryal Behr (229)	Chauli	Pragpur
Basaila (275)	Aloh	Pragpur
Baslag (230)	Chauli	Pragpur

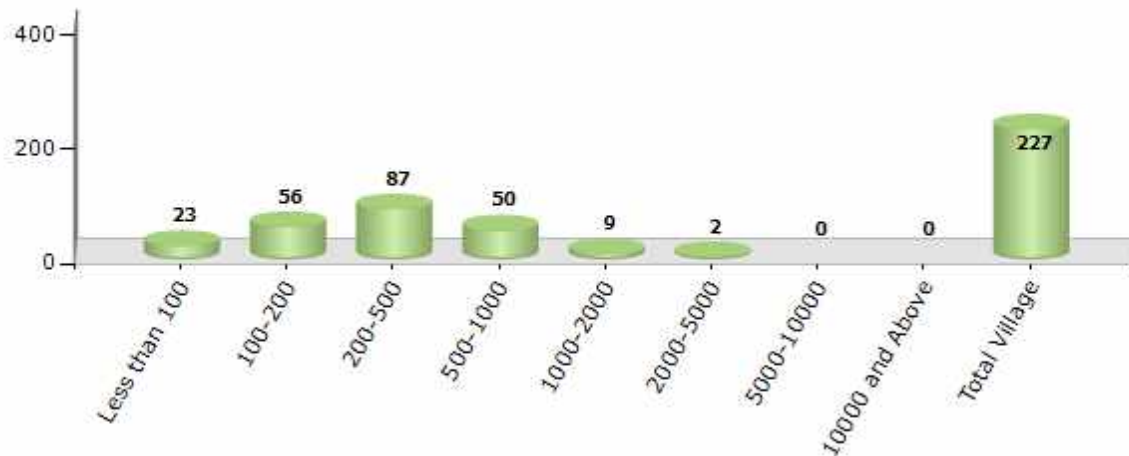
Contd....

Demographics

Number of Villages by Population Size - 2011

Less than 100	100-200	200-500	500-1000	1000-2000	2000-5000	5000-10000	10000 and Above	Total Village
23	56	87	50	9	2	0	0	227

Number of Villages by Population Size - 2011

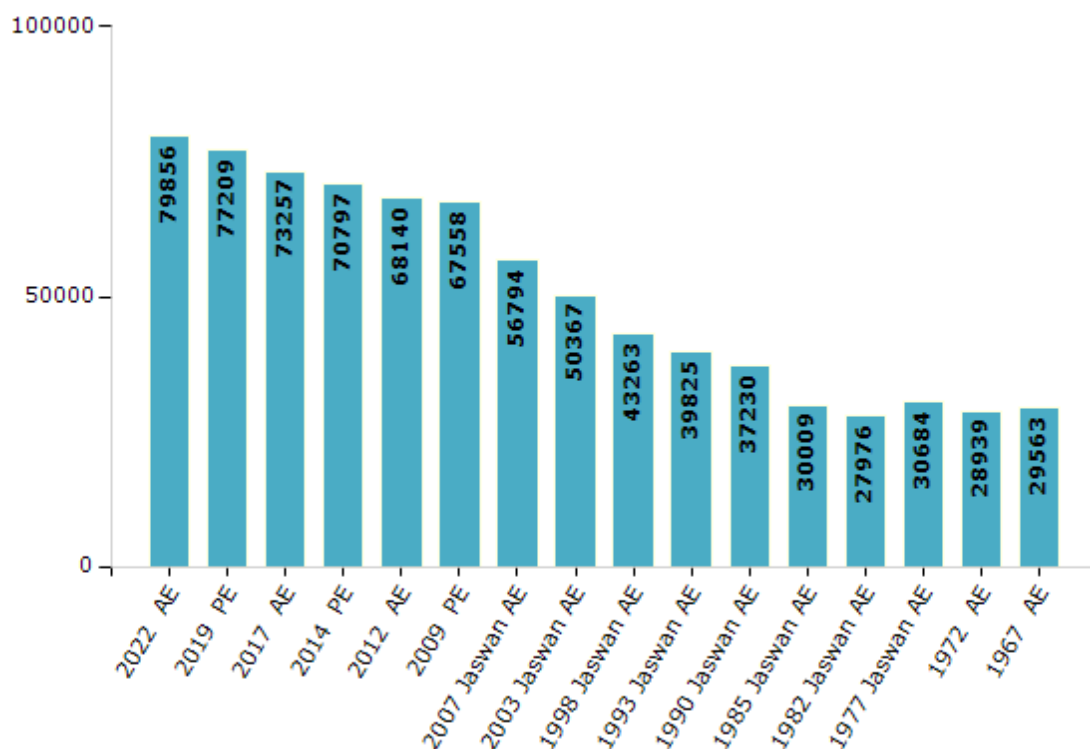


Electoral Features

Electors by Male & Female

Year	Male	Female	Others	Total	Year	Male	Female	Others	Total
2022 AE	40848	39008	0	79856	1998 Jaswan AE	20697	22566	-	43263
2019 PE	39423	37786	0	77209	1993 Jaswan AE	18819	21006	-	39825
2017 AE	37380	35877	0	73257	1990 Jaswan AE	17573	19657	-	37230
2014 PE	36201	34596	0	70797	1985 Jaswan AE	14132	15877	-	30009
2012 AE	34941	33199	0	68140	1982 Jaswan AE	13186	14790	-	27976
2009 PE	34156	33402	-	67558	1977 Jaswan AE	15834	14850	-	30684
2007 Jaswan AE	28183	28611	-	56794	1972 AE	14762	14177	-	28939
2004 Jaswan PE	-	-	-	-	1967 AE	-	-	-	29563
2003 Jaswan AE	24678	25689	-	50367	1952 AE	-	-	-	-
1999 Jaswan PE	-	-	-	-					

Number of Electors



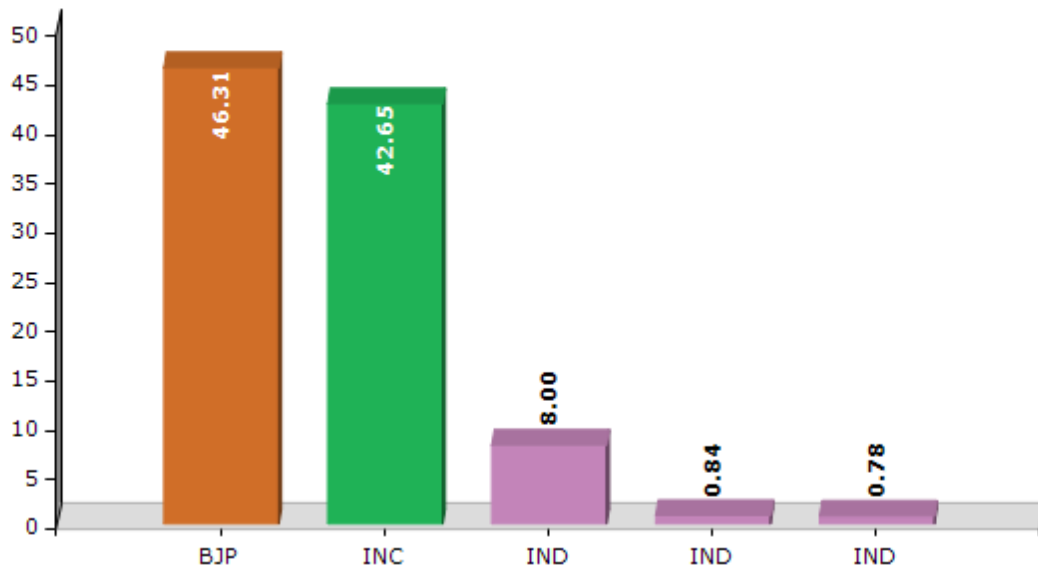
Note : AE : Assembly Election, PE : Assembly Segment of Parliamentary Election

Historical Summary Election Results

Summary Result of Assembly Election - 2017

Candidate Name	Party	Votes	Votes %
Bikram Singh	BJP	23583	46.31
Surinder Singh Mankotia	INC	21721	42.65
Hans Raj	IND	4075	8
Gagan Deep Prashar	IND	428	0.84
Mujesh Kumar	IND	395	0.78
Hoshiar Singh	BSP	203	0.4
Anup Kumar	IND	82	0.16
Amit Kumar	IND	48	0.09
Om Prakash	IND	47	0.09
	NOTA	342	0.67

Votes Percentage of Top Parties - 2017



Polling Station Level Election Results

Number and Name of Polling Stations (PS) (2022)

Number of Polling Stations	Name of Polling Stations	Number of Polling Stations	Name of Polling Stations
1	Sansarpur Terrace	22	Kahanpur
2	Nagrota Ghatti Bilwa	23	Goraldhar
3	Ghamroor	24	Paplother
4	Bari	25	Seul
5	Badhal	26	Lag
6	Nari	27	Ugrahla Upperla
7	Riri(Sansarpur Terrace)	28	Balghar
8	Kuthehra	29	Dada Siba 1
9	Amlehar	30	Dada Siba 2
10	Bandhol	31	Nangal Chowk 1
11	Mehra	32	Nangal Chowk 2
12	Landiara	33	Nichla Bhalwal
13	Kaswa Kaleli	34	Bahi Ghamlehar
14	Malot	35	Jambal
15	Patti	36	Bassi
16	Nangal (Sandh)	37	Rori Kori(Ram Nagar)
17	Kasba Kotla	38	Shamnagar
18	Kotla Behar	39	Gurnwar
19	Jandour	40	Jadaman
20	Amroh	41	Upper Bhalwal
21	Behar Kuthera	42	Bathra 1

Contd....

Polling Station Level Election Results

Polling Station-wise Votes Secured by Overall Top Five Parties in Jaswan-Pragpur Assembly in Assembly Election (AE) under Hamirpur Parliamentary Constituency in Himachal Pradesh (2022)

Number of Polling Station	Winner - Bikram Singh (BJP)	Runner-up - Surinder Singh Mankotia (INC)	3rd - Sanjay Prashar (IND)	4th - Mukesh Kumar (IND)	5th - Prem Chand (BSP)	NOTA	Other	Total Votes Secured
36	140	169	124	16	2	2	0	453
37	250	301	128	5	0	5	2	691
38	135	295	48	10	2	3	1	494
39	298	291	76	21	2	3	1	692
40	90	67	31	9	0	2	0	199
41	285	201	56	16	0	3	4	565
42	203	191	92	11	2	1	1	501
43	141	69	29	3	0	1	0	243
44	131	96	43	5	2	1	1	279
45	118	67	114	7	0	3	1	310
46	137	96	67	0	3	0	3	306
47	234	255	137	5	2	3	1	637
48	167	222	73	18	2	3	2	487
49	227	234	90	14	4	3	0	572
50	153	196	53	18	1	0	4	425
51	151	190	62	40	2	2	1	448
52	156	138	93	15	1	0	1	404
53	260	209	184	6	0	4	1	664
54	159	156	292	6	2	2	22	639
55	185	119	111	3	0	2	2	422
56	241	90	167	1	3	3	0	505
57	116	137	114	13	4	1	2	387
58	119	120	48	2	1	1	1	292
59	270	269	217	20	5	8	2	791
60	105	116	30	4	0	0	0	255
61	115	94	88	7	0	1	0	305
62	135	254	125	1	4	7	2	528
63	173	120	94	3	2	4	3	399
64	72	89	57	4	1	1	1	225
65	197	257	142	10	1	3	0	610
66	221	191	189	13	1	2	2	619
67	185	183	251	7	2	1	0	629
68	270	145	289	14	9	6	2	735
69	224	190	126	8	0	2	2	552
70	186	173	247	6	3	1	1	617

Contd....

Polling Station Level Election Results

Winner, Runner-up and 3rd Party Position & Winning Margin According to Polling Stations in Jaswan-Pragpur Assembly in Assembly Election (AE) under Hamirpur Parliamentary Constituency in Himachal Pradesh (2022)

Polling Station Number	Winner Party	Winner Votes (%)	Runner-up Party	Runner-up Votes (%)	Winning Margin Votes (%)	Third Party	Third Party Votes (%)	Other Votes (%)
71	IND (SP)	194 (51.6)	INC	84 (22.34)	110 (29.26)	BJP	67 (17.82)	31 (8.24)
72	IND (SP)	147 (43.49)	INC	87 (25.74)	60 (17.75)	BJP	85 (25.15)	19 (5.62)
73	BJP	288 (40.79)	IND (SP)	196 (27.76)	92 (13.03)	INC	175 (24.79)	47 (6.66)
74	IND (SP)	171 (42.54)	BJP	141 (35.07)	30 (7.47)	INC	90 (22.39)	0 (0)
75	IND (SP)	406 (48.33)	BJP	268 (31.9)	138 (16.43)	INC	138 (16.43)	28 (3.33)
76	BJP	268 (36.36)	IND (SP)	240 (32.56)	28 (3.8)	INC	215 (29.17)	14 (1.9)
77	IND (SP)	119 (59.2)	BJP	53 (26.37)	66 (32.83)	INC	24 (11.94)	5 (2.49)
78	IND (SP)	280 (45.23)	BJP	192 (31.02)	88 (14.21)	INC	127 (20.52)	20 (3.23)
79	BJP	161 (33.26)	IND (SP)	146 (30.17)	15 (3.09)	INC	143 (29.55)	34 (7.02)
80	BJP	109 (40.07)	IND (SP)	82 (30.15)	27 (9.92)	INC	78 (28.68)	3 (1.1)
81	BJP	156 (34.14)	IND (SP)	148 (32.39)	8 (1.75)	INC	145 (31.73)	8 (1.75)
82	BJP	170 (43.26)	IND (SP)	131 (33.33)	39 (9.93)	INC	82 (20.87)	10 (2.54)
83	BJP	174 (55.59)	IND (SP)	73 (23.32)	101 (32.27)	INC	58 (18.53)	8 (2.56)
84	IND (SP)	197 (42.09)	BJP	158 (33.76)	39 (8.33)	INC	98 (20.94)	15 (3.21)
85	INC	300 (36.19)	IND (SP)	286 (34.5)	14 (1.69)	BJP	196 (23.64)	47 (5.67)
86	IND (SP)	319 (51.95)	BJP	184 (29.97)	135 (21.98)	INC	99 (16.12)	12 (1.95)
87	BJP	175 (40.05)	INC	145 (33.18)	30 (6.87)	IND (SP)	97 (22.2)	20 (4.58)
88	INC	205 (40.35)	BJP	184 (36.22)	21 (4.13)	IND (SP)	104 (20.47)	15 (2.95)
89	BJP	227 (36.44)	INC	201 (32.26)	26 (4.18)	IND (SP)	175 (28.09)	20 (3.21)
90	INC	310 (45.59)	BJP	203 (29.85)	107 (15.74)	IND (SP)	149 (21.91)	18 (2.65)
91	BJP	308 (35.69)	INC	273 (31.63)	35 (4.06)	IND (SP)	259 (30.01)	23 (2.67)
92	INC	203 (45.21)	IND (SP)	125 (27.84)	78 (17.37)	BJP	109 (24.28)	12 (2.67)
93	IND (SP)	349 (41.85)	BJP	265 (31.77)	84 (10.08)	INC	193 (23.14)	27 (3.24)
94	INC	319 (45.57)	BJP	188 (26.86)	131 (18.71)	IND (SP)	163 (23.29)	30 (4.29)
95	INC	214 (33.97)	IND (SP)	204 (32.38)	10 (1.59)	BJP	196 (31.11)	16 (2.54)
96	INC	172 (39)	IND (SP)	143 (32.43)	29 (6.57)	BJP	111 (25.17)	15 (3.4)
97	BJP	161 (61.69)	INC	65 (24.9)	96 (36.79)	IND (SP)	30 (11.49)	5 (1.92)
98	INC	162 (46.15)	BJP	120 (34.19)	42 (11.96)	IND (SP)	57 (16.24)	12 (3.42)
99	INC	143 (37.24)	IND (SP)	109 (28.39)	34 (8.85)	BJP	102 (26.56)	30 (7.81)
100	BJP	317 (42.49)	INC	238 (31.9)	79 (10.59)	IND (SP)	180 (24.13)	11 (1.47)
101	BJP	311 (40.39)	INC	291 (37.79)	20 (2.6)	IND (SP)	132 (17.14)	36 (4.68)
102	BJP	184 (49.6)	INC	128 (34.5)	56 (15.1)	IND (SP)	53 (14.29)	6 (1.62)
103	BJP	164 (32.8)	IND (SP)	156 (31.2)	8 (1.6)	INC	154 (30.8)	26 (5.2)
104	BJP	226 (48.09)	INC	131 (27.87)	95 (20.22)	IND (SP)	85 (18.09)	28 (5.96)
105	INC	179 (42.72)	BJP	146 (34.84)	33 (7.88)	IND (MK)	49 (11.69)	45 (10.74)

Contd....

Socio-Economic Amenities - Rural

Access to Education Facilities

Particulars	Number of Villages (% of Population)				
	Available	Not Available	If Not Available (Distance of Nearest Facility)		
			A	B	C
Govt. Primary School	152 (80)	76 (20)	74 (19)	0 (0)	0 (0)
Private Primary School	8 (7)	220 (93)	1 (0)	0 (0)	0 (0)
Govt. Middle School	75 (49)	153 (51)	136 (44)	10 (3)	0 (0)
Private Middle School	10 (9)	218 (91)	2 (0)	0 (0)	0 (0)
Govt. Secondary School	41 (26)	187 (74)	150 (59)	27 (9)	2 (0)
Private Secondary School	5 (5)	223 (95)	5 (2)	0 (0)	0 (0)
Govt. Senior Secondary School	20 (14)	208 (86)	138 (59)	57 (20)	4 (1)
Private Senior Secondary School	4 (4)	224 (96)	5 (2)	0 (0)	0 (0)
Govt. Arts and Science Degree College	0 (0)	228 (100)	0 (0)	29 (15)	199 (85)
Private Arts and Science Degree College	0 (0)	228 (100)	0 (0)	0 (0)	0 (0)
Govt. Engineering College	0 (0)	228 (100)	0 (0)	0 (0)	226 (98)
Private Engineering College	0 (0)	228 (100)	0 (0)	1 (0)	1 (1)
Govt. Medicine College	0 (0)	228 (100)	0 (0)	0 (0)	228 (100)
Private Medicine College	0 (0)	228 (100)	0 (0)	0 (0)	0 (0)
Govt. Management Institute	0 (0)	228 (100)	0 (0)	11 (4)	191 (82)
Private Management Institute	2 (2)	226 (98)	0 (0)	4 (2)	20 (10)
Govt. Polytechnic	0 (0)	228 (100)	0 (0)	1 (0)	217 (92)
Private Polytechnic	1 (2)	227 (98)	0 (0)	2 (1)	7 (5)
Govt. Vocational Training School/ITI	1 (1)	227 (99)	8 (6)	28 (12)	102 (47)
Private Vocational Training School/ITI	3 (3)	225 (97)	20 (11)	34 (11)	32 (10)
Govt. Non Formal Training Centre	2 (1)	226 (99)	29 (14)	19 (8)	104 (46)
Private Non Formal Training Centre	0 (0)	228 (100)	0 (0)	11 (8)	63 (23)
Govt. School For Disabled	0 (0)	228 (100)	0 (0)	0 (0)	226 (99)
Private School For Disabled	0 (0)	228 (100)	0 (0)	0 (0)	2 (1)
Government Others	0 (0)	228 (100)	0 (0)	0 (0)	228 (100)
Private Others	0 (0)	228 (100)	0 (0)	0 (0)	0 (0)

Note : Distance A : Less than 5 km; B : Between 5-10 km; C : 10+ km.; Source : Data Analysis is based on 2011 Census.

DISCLAIMER

The Terms of Use and Disclaimer of Datanet India Private Limited (hereinafter referred to as "Datanet") for use of this analysis report of **Jaswan-Pragpur Assembly Constituency (Jaswan-Pragpur Vidhan Sabha)** :-

1. **Assembly Factbook™** is a Registered Trade Mark owned by Datanet.
2. All the maps are sketched and graphical representation only and have not been drawn to the scale and also not to represent the actual geographical area or boundary of the unit.
3. The data for the aforesaid analysis is based on authentic sources and has been culled from the various publications of Census, CSO and NSSO for district and block level data, various central and state government departments, Central & State Elections Commissions and the concerned Returning Officers' releases, Electoral Rolls, Election results and allied publications, internal assessment, surveys, estimates and analysis. Therefore, certain adjustment of data at micro level may have been done to arrive closer to the macro data.
4. Data have been provided on an "As Is" and "As AVAILABLE" basis
5. The colours shown in the maps or diagram and charts of a particular party, alliance or AC are indicative and do not represent them.
6. This publication which includes maps, sheets, graphs and data would be the property under copyright of Datanet only. The user may use these for its internal study, analysis and research purposes. It's public display, re-selling or any commercial uses by the user are not allowed.
7. Datanet has taken due care and caution in compilation and processing of data and allied information, but does not guarantee the accuracy, adequacy or completeness of any information/analysis and will be not responsible for any errors or omissions or for the results obtained from the use of such information/analysis.
8. All the contents for the publication have been culled from various authentic sources and Datanet reasonably believes such sources to be reliable, but does not make any representations, express or implied as to the accuracy or fitness of use of such information. The information or contents of the information/analysis do not constitute advice and should not be relied upon in making (or refraining from making) any decision. Any reliance placed upon the information provided by Datanet is the sole responsibility and strictly at the user's risk.
9. In no event will Datanet be liable for any damages (including, without limitation, damages for loss of business projects, or loss of profits) arising in contract, tort or otherwise from the use of or inability to use any of its contents, or from any action taken (or refrained from being taken) as a result of using the analysis or any of its contents. Datanet its directors, owners, editors, officials, employees, distributor and agents or any associate will not be liable for any errors in the information contained or any consequences arising from the use of the contents of the provided information/analysis.
10. If any provision of these terms and conditions is held invalid or illegal or unenforceable for any reason by any court of competent jurisdiction, such provision shall be severed and the remainder of provisions of the terms and conditions shall continue in full force and effect as if the Term of Use had been executed with the invalid, illegal or unenforceable provision eliminated.
11. If there are any discrepancies in the information provided, please bring it to attention of Datanet for suitable rectification measures.

Buy Online This Complete Book At
Datanet India eBooks Store

www.indiastatpublications.com

or go directly at

[http://www.indiastatpublications.com/
Assembly_factbook/Himachal Pradesh/Hamirpur/ Jaswan-
Pragpur](http://www.indiastatpublications.com/Assembly_factbook/Himachal%20Pradesh/Hamirpur/Jaswan-Pragpur)

 **indiastat**elections

ISBN : 978-93-5822-899-1



9 789358 228991