



Uttar Pradesh

# Assembly Factbook™

Zafrabad Assembly Constituency



Key Electoral Data of Zafrabad  
Assembly Constituency (Vidhan Sabha)

Uttar Pradesh

# **Assembly Factbook™**

Zafrabad Assembly Constituency



Zafrabad Vidhan Sabha

**Editor & Director**

Dr. R.K. Thukral

**Research Editor**

Dr. Shafeeq Rahman

**Compiled, Researched and Published by  
Datanet India Pvt. Ltd.**

D-100, 1st Floor,

Okhla Industrial Area, Phase-I,

New Delhi- 110020.

Ph.: 91-11- 43580781-84

Email : support@indiastatpublications.com

Website : www.indiastatelections.com

**Online Book Store :**

www.indiastatpublications.com

**Report No. :** AFB/UP-371-0123

**ISBN :** 978-93-5905-863-4

**First Edition :** January, 2018

**Sixth Updated Edition :** January, 2023

**Price :** Rs.11500/-

US\$ 310

**© Datanet India Pvt. Ltd.**

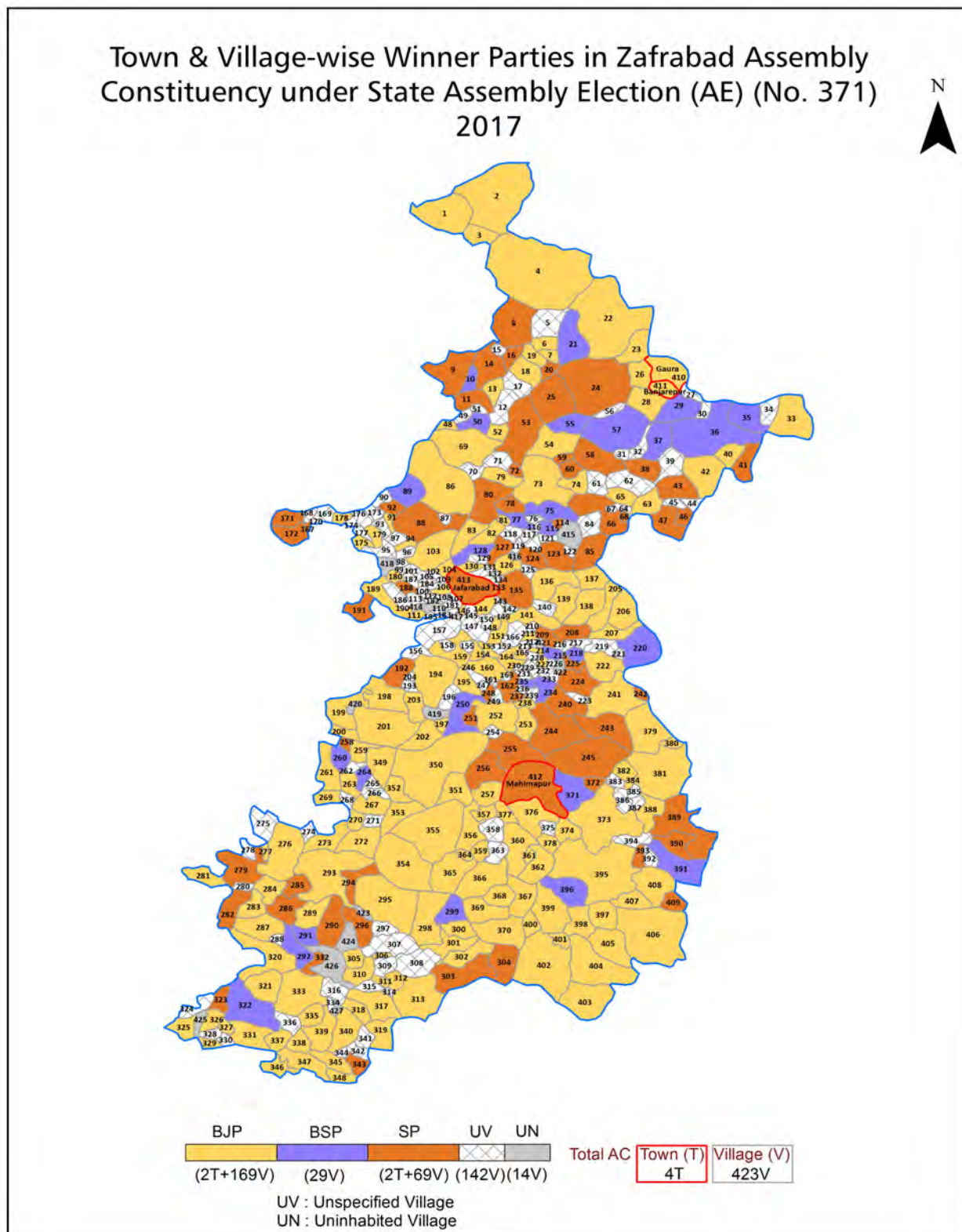
All rights reserved. No part of this book may be reproduced, stored in a retrieval system or transmitted in any form or by any means, mechanical photocopying, photographing, scanning, recording or otherwise without the prior written permission of the publisher. Please refer to Disclaimer at page no. 325 for the use of this publication.

Printed in India

No.	Particulars	Page No.
	<b>Introduction</b>	
1	Assembly Constituency - (Vidhan Sabha) at a Glance   Features of Assembly as per Delimitation Commission of India (2008)	1-2
	<b>Location and Political Maps</b>	
2	Location Map   Boundaries of Assembly Constituency - (Vidhan Sabha) in District   Boundaries of Assembly Constituency under Parliamentary Constituency - (Lok Sabha)   Town & Village-wise Winner Parties-2022, 2019, 2017, 2014, 2012 and 2009	3-11
	<b>Administrative Setup (2011)</b>	
3	District   Sub-district   Towns   Villages   Inhabited Villages   Uninhabited Villages   Village Panchayat   Intermediate Panchayat	12-32
	<b>Demographics (2011)</b>	
4	Population   Households   Rural/Urban Population   Towns and Villages by Population Size   Sex Ratio (Total & 0-6 Years)   Religious Population   Social Population   Literacy Rate	33-34
	<b>Electoral Features</b>	
5	Important Dates of Last Elections Held   Electors by Gender   Service Electors   Voters   Voters Turnout   Polling Stations & Average Number of Electors per Polling Station   Electors by Age Group   Present Elected Representatives	35-40
	<b>Historical Summary Election Results</b>	
6	Vote Share of Major Parties   Winning Margin (Number & Percentage)   Polarity of Parties   Summary Result of Assembly Segment of Parliamentary Election 2019, 2014 and 2009   Summary Result of Assembly Elections 2022, 2017 and 2012	41-50
	<b>Polling Station Level Election Results</b>	
7	Name and Number of Polling Station 2022, 2019, 2017, 2014, 2012 and 2009   Polling Station-wise Electors, Voters & Voters Turnout 2022, 2019, 2017, 2014, 2012 and 2009   Polling Station wise Elections Results 2022, 2019, 2017, 2014, 2012 and 2009	51-282
8	<b>Panchayat and Local Bodies Election Results</b> Panchayat Result 2015   Urban Local Bodies Result 2012	283-303
	<b>Share of Assembly Constituency</b>	
9	Share of Assembly Constituency - (Vidhan Sabha) in State, District and Parliamentary Constituency - (Lok Sabha)	304
	<b>Socio-Economic Amenities (2011)</b>	
10	Access to Administrative Units   Agricultural, Manufacturing and Industrial Commodities   Demographic Indicators   Education   Health & Manpower   Drinking Water Supply   Sanitation   Entertainment and Recreations Infrastructure   Power   Food Allocation Distribution and Marketing of Agriculture Commodities Infrastructure   Transport and Road Infrastructure   Communication   Banking and Financial Services   Land Use   Irrigation Source	306-320
11	<b>Abbreviation &amp; Sources</b>	321-324
12	<b>Disclaimer</b>	325



## Location & Political Map



## Administrative Setup

### List of Village Panchayat & Intermediate Panchayat (Block) Name - 2011

Village Name	Village Panchayat Name	Intermediate Panchayat Name
Abdullapur	Kishunpur Garidiha	Karanjakala
Ahadipur	Bashirpur	Ramnagar
Ahamadpur	Ahmadpur	Sirkoni
Ahirauli	Ahiroli	Ramnagar
Ammarpur	Nahar Patti	Jalalpur
Ara	Karja Kalan	Karanjakala
Arazi Bhupat Patti	Bakarabad	Sirkoni
Arazi Kishunpur	Bhuwala Patti	Sirkoni
Asada	Ghopur	Dharampur
Asbaranpur	Asbaranpur	Jalalpur
Ashapur	Mahreo	Jalalpur
Atarahi	Atarhi	Karanjakala
Atkadpur	Ijari	Sirkoni
Baboopur	Husenabad	Sirkoni
Badalapur	Dalpat Patti	Sirkoni
Baghandara	Baghnda	Dharampur
Baghmurtza	Mohammadpur Kagh	Dharampur
Bahadur Patti	Jethpura	Ramnagar
Bahadurpur	Sirkoni	Sirkoni
Bahari	Vahri	Ramnagar
Baharipur	Baharipur	Sirkoni
Bahuri	Chauri	Jalalpur
Bairagar	Kanpanpur	Sirkoni
Bairipur	Bakarabad	Sirkoni
Bakarabad	Bakarabad	Sirkoni
Balemau	Kuhudh	Dharampur
Ballipur	Ballipur	Ramnagar
Bamaila	Chouki Vilkuva	Dharampur
Bandipur	Sadipur	Sirkoni

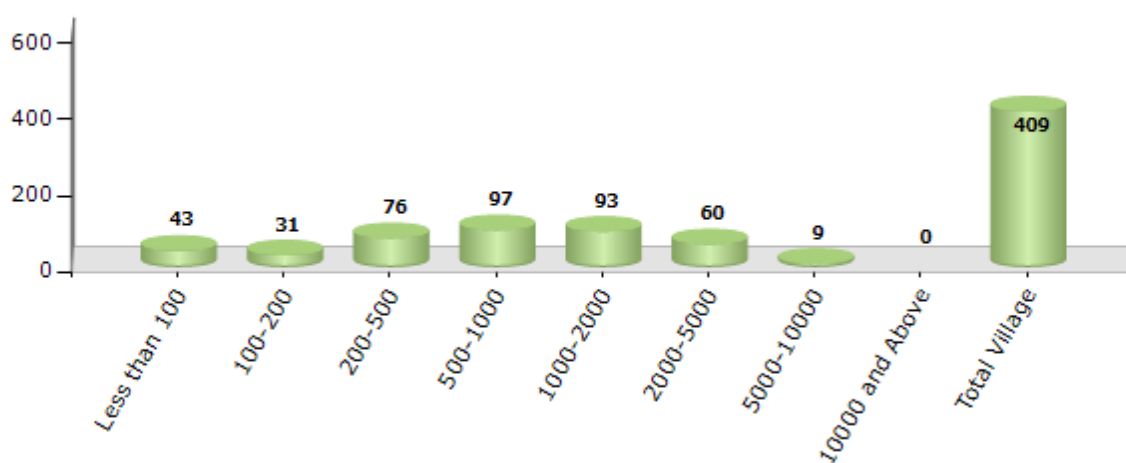
Contd....

## Demographics

### Number of Villages by Population Size - 2011

Less than 100	100-200	200-500	500-1000	1000-2000	2000-5000	5000-10000	10000 and Above	Total Village
43	31	76	97	93	60	9	0	409

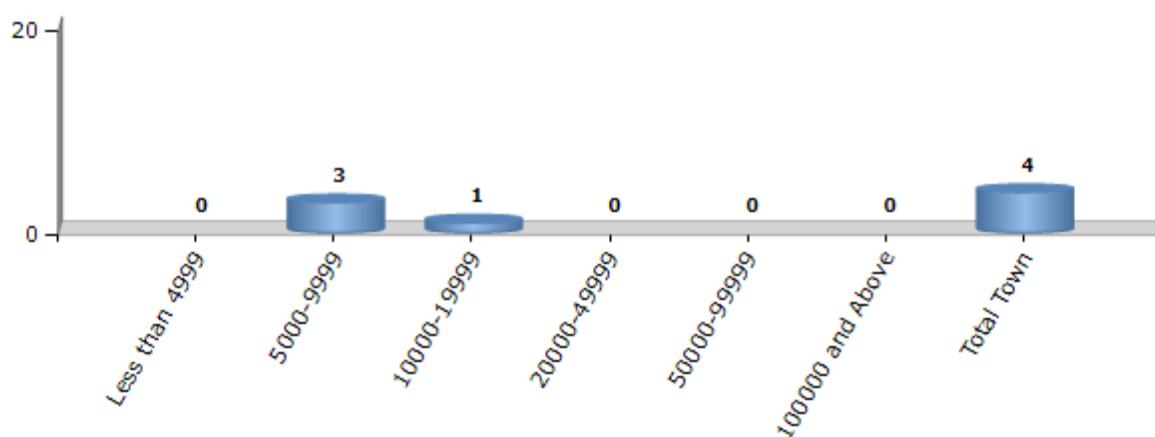
Number of Villages by Population Size - 2011



### Number of Towns by Population Size - 2011

Less than 4999	5000-9999	10000-19999	20000-49999	50000-99999	100000 and Above	Total Town
0	3	1	0	0	0	4

Number of Towns by Population Size - 2011

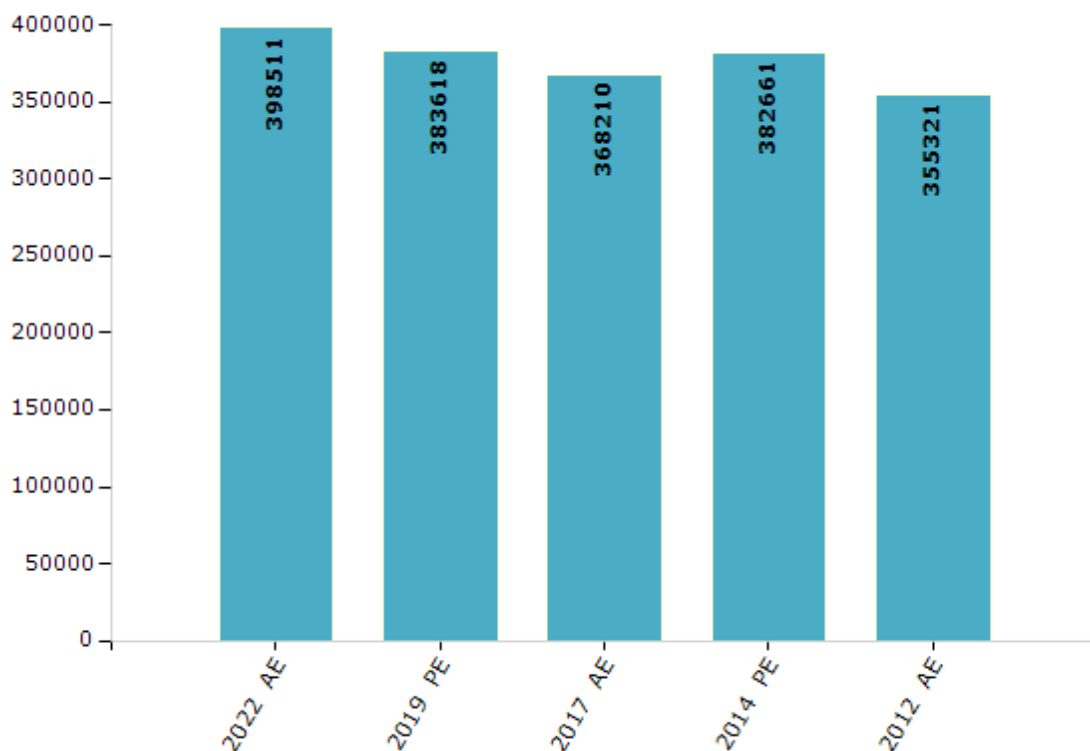


## Electoral Features

### Electors by Male & Female

Year	Male	Female	Others	Total	Year	Male	Female	Others	Total
2022 AE	209232	189264	15	398511	1991 AE	-	-	-	-
2019 PE	203488	180117	13	383618	1989 AE	-	-	-	-
2017 AE	194931	173267	12	368210	1985 AE	-	-	-	-
2014 PE	207977	174674	10	382661	1980 AE	-	-	-	-
2012 AE	192325	162986	10	355321	1977 AE	-	-	-	-
2009 PE	-	-	-	-	1974 AE	-	-	-	-
2007 AE	-	-	-	-	1969 AE	-	-	-	-
2004 PE	-	-	-	-	1967 AE	-	-	-	-
2002 AE	-	-	-	-	1962 AE	-	-	-	-
1999 PE	-	-	-	-	1957 AE	-	-	-	-
1996 AE	-	-	-	-	1952 AE	-	-	-	-
1993 AE	-	-	-	-					

Number of Electors



**Note :** AE : Assembly Election, PE : Assembly Segment of Parliamentary Election



## Historical Summary Election Results

### Summary Result of Assembly Election - 2017

Candidate Name	Party	Votes	Votes %
Dr Harendra Prasad Singh	BJP	85989	41.65
Shachindra Nath Tripathi	SP	61124	29.61
Sanjiv Kuamr Upadhyay	BSP	45490	22.03
Jai Prakash	CPI	2845	1.38
Motilal Bind	RLD	1351	0.65
Ghan Shyam Dubey	LD	1342	0.65
Pradeep Nishad	IND	1268	0.61
Deepak Yadav Alias Pappu	IND	1158	0.56
Anand Gopal Mishra	NYP	1015	0.49
Ramlakhan Chauhan	IND	932	0.45
Rajendr	IND	871	0.42
Yogish Chandra Dubey	IND	763	0.37
Chhotelal	MAHAD	471	0.23
Pradeep	BMUP	364	0.18
Manoj	SAJPCS	270	0.13
	NOTA	1198	0.58

## Polling Station Level Election Results

### Number and Name of Polling Stations (PS) (2022)

Number of Polling Stations	Name of Polling Stations	Number of Polling Stations	Name of Polling Stations
1	P S Jamuhai Sarkari Bhavan North Side	22	P M V Dharmapur East Side
2	P S Jamuhai Sarkari Bhavan South Side	23	P M V Dharmapur East Side
3	P S Jamuhai Sarkari Bhavan South Side	24	P M V Dharmapur East Side
4	P S Jamuhai Sarkari Bhavan South Side	25	P M V Dharmapur East Side
5	P S Atarahi East Side	26	P S Dharamsari East Side
6	P S Atarahi West Side	27	P S Dharamsari East Side
7	P S Chakava	28	P S Premapur Room No.1
8	J H S Aara North Side	29	P S Premapur Room No.2
9	J H S Aara South Side	30	P S Dudhaura Room No.1
10	J H S Aara South Side	31	P S Dudhaura Room No.2
11	P S Chauki Dharsand Sarkari Bhavan North Side	32	P S Saloni Mahimapur North Side
12	P S Chauki Dharsand Sarkari Bhavan North Side	33	P S Parapatti
13	P S Kishunpur Daridiha Sarkari Bhavan	34	P S Kukuha East Side
14	P S Kishunpur Daridiha Sarkari Bhavan	35	P S Kukuha Middle Side
15	J H S Pachevara North Side	36	P S Kukuha Middle Side
16	J H S Pachevara South Side	37	Fatima Girls Jhs Chorsand East Side
17	J H S Pachevara South Side	38	Fatima Girls Jhs Chorsand East Side
18	P S Jhhansepur	39	Fatima Girls Jhs Chorsand Middle Side
19	P S Tiyyari Room No.1	40	Fatima Girls Jhs Chorsand West Side
20	P S Tiyyari Room No.2	41	P S Nainsand North Side
21	P M V Dharmapur West Side	42	P S Nainsand South Side

Contd....

## Polling Station Level Election Results

### Polling Station-wise Votes Secured by Overall Top Five Parties in Zafrabad Assembly in Assembly Election (AE) under Machhlishahr Parliamentary Constituency in Uttar Pradesh (2022)

Number of Polling Station	Winner - Jagdish Narayan (SBSP)	Runner-up - Dr. Harendra Prasad Singh (BJP)	3rd - Dr. Santosh Kumar Mishra (BSP)	4th - Abhishek Singh (Sonu) (IND)	5th - Brijesh Kumar (JANADIP)	NOTA	Other	Total Votes Secured
36	161	190	89	13	4	2	13	472
37	244	178	31	12	16	6	14	501
38	307	78	2	12	166	1	16	582
39	215	53	28	8	241	7	25	577
40	173	132	356	12	21	7	6	707
41	158	88	227	10	1	6	18	508
42	194	198	14	6	1	2	9	424
43	218	107	30	7	4	4	13	383
44	205	93	170	7	10	0	8	493
45	273	252	6	12	22	3	6	574
46	220	297	2	8	10	3	7	547
47	277	260	13	17	10	4	13	594
48	197	279	169	24	4	11	13	697
49	181	168	67	3	4	2	13	438
50	109	201	97	11	2	2	21	443
51	174	430	4	6	0	3	10	627
52	279	351	5	18	7	5	12	677
53	399	286	2	7	17	0	4	715
54	135	326	169	4	1	3	9	647
55	148	142	169	6	0	1	16	482
56	176	77	88	8	0	0	12	361
57	160	449	40	9	4	9	24	695
58	54	264	371	10	3	1	18	721
59	51	269	239	4	1	3	16	583
60	246	199	77	16	4	4	14	560
61	195	217	177	12	3	8	7	619
62	225	265	111	5	3	7	15	631
63	298	33	125	4	2	5	11	478
64	356	32	21	3	3	4	2	421
65	423	144	195	8	9	1	7	787
66	290	69	109	10	3	1	7	489
67	213	69	174	8	3	2	9	478
68	127	178	135	7	2	0	6	455
69	454	222	21	14	8	10	18	747
70	379	147	95	5	1	3	9	639

Contd....

## Polling Station Level Election Results

**Winner, Runner-up and 3rd Party Position & Winning Margin According to Polling Stations in Zafrabad Assembly in Assembly Election (AE) under Machhlishahr Parliamentary Constituency in Uttar Pradesh (2022)**

Polling Station Number	Winner Party	Winner Votes (%)	Runner-up Party	Runner-up Votes (%)	Winning Margin Votes (%)	Third Party	Third Party Votes (%)	Other Votes (%)
71	SBSP	291 (43.5)	BSP	226 (33.78)	65 (9.72)	BJP	121 (18.09)	31 (4.63)
72	SBSP	348 (57.71)	BJP	124 (20.56)	224 (37.15)	BSP	96 (15.92)	35 (5.8)
73	SBSP	506 (71.67)	BJP	121 (17.14)	385 (54.53)	BSP	31 (4.39)	48 (6.8)
74	SBSP	200 (35.15)	BJP	186 (32.69)	14 (2.46)	BSP	127 (22.32)	56 (9.84)
75	SBSP	301 (62.84)	BJP	136 (28.39)	165 (34.45)	IND (AS)	13 (2.71)	29 (6.05)
76	SBSP	243 (58.98)	BJP	117 (28.4)	126 (30.58)	BSP	32 (7.77)	20 (4.85)
77	SBSP	460 (58.08)	BJP	190 (23.99)	270 (34.09)	BSP	119 (15.03)	23 (2.9)
78	BSP	235 (44.59)	BJP	173 (32.83)	62 (11.76)	SBSP	92 (17.46)	27 (5.12)
79	SBSP	246 (47.67)	BJP	219 (42.44)	27 (5.23)	BSP	24 (4.65)	27 (5.23)
80	SBSP	142 (44.65)	BSP	113 (35.53)	29 (9.12)	BJP	37 (11.64)	26 (8.18)
81	SBSP	257 (41.59)	BSP	179 (28.96)	78 (12.63)	BJP	158 (25.57)	24 (3.88)
82	SBSP	458 (69.29)	BJP	166 (25.11)	292 (44.18)	IND (AS)	13 (1.97)	24 (3.63)
83	SBSP	130 (52.21)	BJP	91 (36.55)	39 (15.66)	BSP	10 (4.02)	18 (7.23)
84	SBSP	502 (71.61)	BJP	147 (20.97)	355 (50.64)	IND (AS)	19 (2.71)	33 (4.71)
85	BSP	353 (48.82)	SBSP	232 (32.09)	121 (16.73)	BJP	111 (15.35)	27 (3.73)
86	SBSP	220 (34.11)	BJP	220 (34.11)	0 (0)	BSP	193 (29.92)	12 (1.86)
87	SBSP	190 (44.71)	BSP	148 (34.82)	42 (9.89)	BJP	76 (17.88)	11 (2.59)
88	SBSP	246 (61.65)	BJP	79 (19.8)	167 (41.85)	BSP	62 (15.54)	12 (3.01)
89	SBSP	606 (78.5)	BSP	68 (8.81)	538 (69.69)	IND (AS)	31 (4.02)	67 (8.68)
90	SBSP	552 (79.2)	BJP	98 (14.06)	454 (65.14)	BSP	15 (2.15)	32 (4.59)
91	SBSP	290 (45.6)	BSP	179 (28.14)	111 (17.46)	BJP	140 (22.01)	27 (4.25)
92	BJP	366 (45.47)	SBSP	309 (38.39)	57 (7.08)	BSP	86 (10.68)	44 (5.47)
93	BJP	345 (50.59)	SBSP	270 (39.59)	75 (11)	BSP	19 (2.79)	48 (7.04)
94	SBSP	585 (72.58)	BSP	146 (18.11)	439 (54.47)	BJP	47 (5.83)	28 (3.47)
95	BJP	201 (46.31)	SBSP	190 (43.78)	11 (2.53)	JANADIP	15 (3.46)	28 (6.45)
96	SBSP	330 (51.24)	BSP	161 (25)	169 (26.24)	BJP	138 (21.43)	15 (2.33)
97	SBSP	295 (51.48)	BJP	227 (39.62)	68 (11.86)	BSP	42 (7.33)	9 (1.57)
98	BJP	302 (43.58)	BSP	180 (25.97)	122 (17.61)	SBSP	165 (23.81)	46 (6.64)
99	SBSP	320 (42.27)	BJP	311 (41.08)	9 (1.19)	BSP	78 (10.3)	48 (6.34)
100	BSP	249 (39.15)	SBSP	188 (29.56)	61 (9.59)	BJP	171 (26.89)	28 (4.4)
101	SBSP	184 (44.99)	BJP	149 (36.43)	35 (8.56)	BSP	45 (11)	31 (7.58)
102	SBSP	238 (59.5)	BJP	110 (27.5)	128 (32)	BSP	35 (8.75)	17 (4.25)
103	BSP	308 (44)	BJP	245 (35)	63 (9)	SBSP	116 (16.57)	31 (4.43)
104	BJP	414 (70.65)	SBSP	129 (22.01)	285 (48.64)	BSP	13 (2.22)	30 (5.12)
105	BSP	248 (43.82)	BJP	157 (27.74)	91 (16.08)	SBSP	131 (23.14)	30 (5.3)

Contd....

## Socio-Economic Amenities - Rural

### Access to Education Facilities

Particulars	Number of Villages (% of Population)				
	Available	Not Available	If Not Available (Distance of Nearest Facility)		
			A	B	C
Govt. Primary School	177 (65)	232 (35)	154 (12)	0 (0)	0 (0)
Private Primary School	77 (41)	332 (59)	4 (0)	0 (0)	0 (0)
Govt. Middle School	90 (43)	319 (57)	194 (28)	1 (0)	3 (0)
Private Middle School	41 (24)	368 (76)	34 (5)	0 (0)	1 (0)
Govt. Secondary School	14 (6)	395 (94)	156 (30)	18 (3)	2 (0)
Private Secondary School	25 (18)	384 (82)	117 (26)	7 (2)	1 (0)
Govt. Senior Secondary School	10 (2)	399 (98)	148 (31)	34 (7)	4 (1)
Private Senior Secondary School	21 (16)	388 (84)	115 (23)	12 (4)	2 (1)
Govt. Arts and Science Degree College	1 (0)	408 (100)	44 (12)	72 (14)	34 (9)
Private Arts and Science Degree College	4 (1)	405 (99)	92 (23)	57 (15)	27 (9)
Govt. Engineering College	0 (0)	409 (100)	13 (3)	45 (12)	167 (41)
Private Engineering College	0 (0)	409 (100)	12 (5)	50 (12)	43 (12)
Govt. Medicine College	0 (0)	409 (100)	4 (3)	45 (11)	213 (48)
Private Medicine College	0 (0)	409 (100)	3 (1)	28 (5)	36 (12)
Govt. Management Institute	0 (0)	409 (100)	10 (2)	54 (13)	145 (34)
Private Management Institute	0 (0)	409 (100)	5 (1)	35 (8)	64 (16)
Govt. Polytechnic	0 (0)	409 (100)	26 (4)	83 (18)	182 (50)
Private Polytechnic	0 (0)	409 (100)	1 (0)	25 (6)	37 (9)
Govt. Vocational Training School/ITI	0 (0)	409 (100)	12 (2)	52 (15)	193 (52)
Private Vocational Training School/ITI	0 (0)	409 (100)	22 (5)	46 (6)	26 (6)
Govt. Non Formal Training Centre	0 (0)	409 (100)	36 (11)	69 (14)	97 (30)
Private Non Formal Training Centre	0 (0)	409 (100)	3 (0)	6 (1)	7 (2)
Govt. School For Disabled	0 (0)	409 (100)	7 (2)	33 (9)	116 (30)
Private School For Disabled	0 (0)	409 (100)	2 (1)	0 (0)	7 (1)
Government Others	0 (0)	409 (100)	0 (0)	0 (0)	2 (1)
Private Others	0 (0)	409 (100)	0 (0)	0 (0)	2 (0)

Note : Distance A : Less than 5 km; B : Between 5-10 km; C : 10+ km.; Source : Data Analysis is based on 2011 Census.



## DISCLAIMER

The Terms of Use and Disclaimer of Datanet India Private Limited (hereinafter referred to as "Datanet") for use of this analysis report of **Zafrabad Assembly Constituency (Zafrabad Vidhan Sabha)** :-

1. **Assembly Factbook™** is a Registered Trade Mark owned by Datanet.
2. All the maps are sketched and graphical representation only and have not been drawn to the scale and also not to represent the actual geographical area or boundary of the unit.
3. The data for the aforesaid analysis is based on authentic sources and has been culled from the various publications of Census, CSO and NSSO for district and block level data, various central and state government departments, Central & State Elections Commissions and the concerned Returning Officers' releases, Electoral Rolls, Election results and allied publications, internal assessment, surveys, estimates and analysis. Therefore, certain adjustment of data at micro level may have been done to arrive closer to the macro data.
4. Data have been provided on an "As Is" and "As AVAILABLE" basis
5. The colours shown in the maps or diagram and charts of a particular party, alliance or AC are indicative and do not represent them.
6. This publication which includes maps, sheets, graphs and data would be the property under copyright of Datanet only. The user may use these for its internal study, analysis and research purposes. It's public display, re-selling or any commercial uses by the user are not allowed.
7. Datanet has taken due care and caution in compilation and processing of data and allied information, but does not guarantee the accuracy, adequacy or completeness of any information/analysis and will be not responsible for any errors or omissions or for the results obtained from the use of such information/analysis.
8. All the contents for the publication have been culled from various authentic sources and Datanet reasonably believes such sources to be reliable, but does not make any representations, express or implied as to the accuracy or fitness of use of such information. The information or contents of the information/analysis do not constitute advice and should not be relied upon in making (or refraining from making) any decision. Any reliance placed upon the information provided by Datanet is the sole responsibility and strictly at the user's risk.
9. In no event will Datanet be liable for any damages (including, without limitation, damages for loss of business projects, or loss of profits) arising in contract, tort or otherwise from the use of or inability to use any of its contents, or from any action taken (or refrained from being taken) as a result of using the analysis or any of its contents. Datanet its directors, owners, editors, officials, employees, distributor and agents or any associate will not be liable for any errors in the information contained or any consequences arising from the use of the contents of the provided information/analysis.
10. If any provision of these terms and conditions is held invalid or illegal or unenforceable for any reason by any court of competent jurisdiction, such provision shall be severed and the remainder of provisions of the terms and conditions shall continue in full force and effect as if the Term of Use had been executed with the invalid, illegal or unenforceable provision eliminated.
11. If there are any discrepancies in the information provided, please bring it to attention of Datanet for suitable rectification measures.

**Buy Online This Complete Book At**  
**Datanet India eBooks Store**

[www.indiastatpublications.com](http://www.indiastatpublications.com)

or go directly at

[http://www.indiastatpublications.com/  
Assembly\\_factbook/Uttar Pradesh/Machhlisahr/ Zafrabad](http://www.indiastatpublications.com/Assembly_factbook/Uttar%20Pradesh/Machhlisahr/Zafrabad)

 **indiastat**elections

ISBN : 978-93-5905-863-4



9 789359 058634