



Uttar Pradesh

Assembly Factbook™

Ghosi Assembly Constituency



Key Electoral Data of Ghosi
Assembly Constituency (Vidhan Sabha)

Uttar Pradesh

Assembly Factbook™

Ghosi Assembly Constituency



Ghosi Vidhan Sabha

Editor & Director

Dr. R.K. Thukral

Research Editor

Dr. Shafeeq Rahman

**Compiled, Researched and Published by
Datanet India Pvt. Ltd.**

D-100, 1st Floor,

Okhla Industrial Area, Phase-I,

New Delhi- 110020.

Ph.: 91-11- 43580781-84

Email : support@indiastatpublications.com

Website : www.indiastatelections.com

Online Book Store :

www.indiastatpublications.com

Report No. : AFB/UP-354-0123

ISBN : 978-93-5905-851-1

First Edition : January, 2018

Sixth Updated Edition : January, 2023

Price : Rs.11500/-

US\$ 310

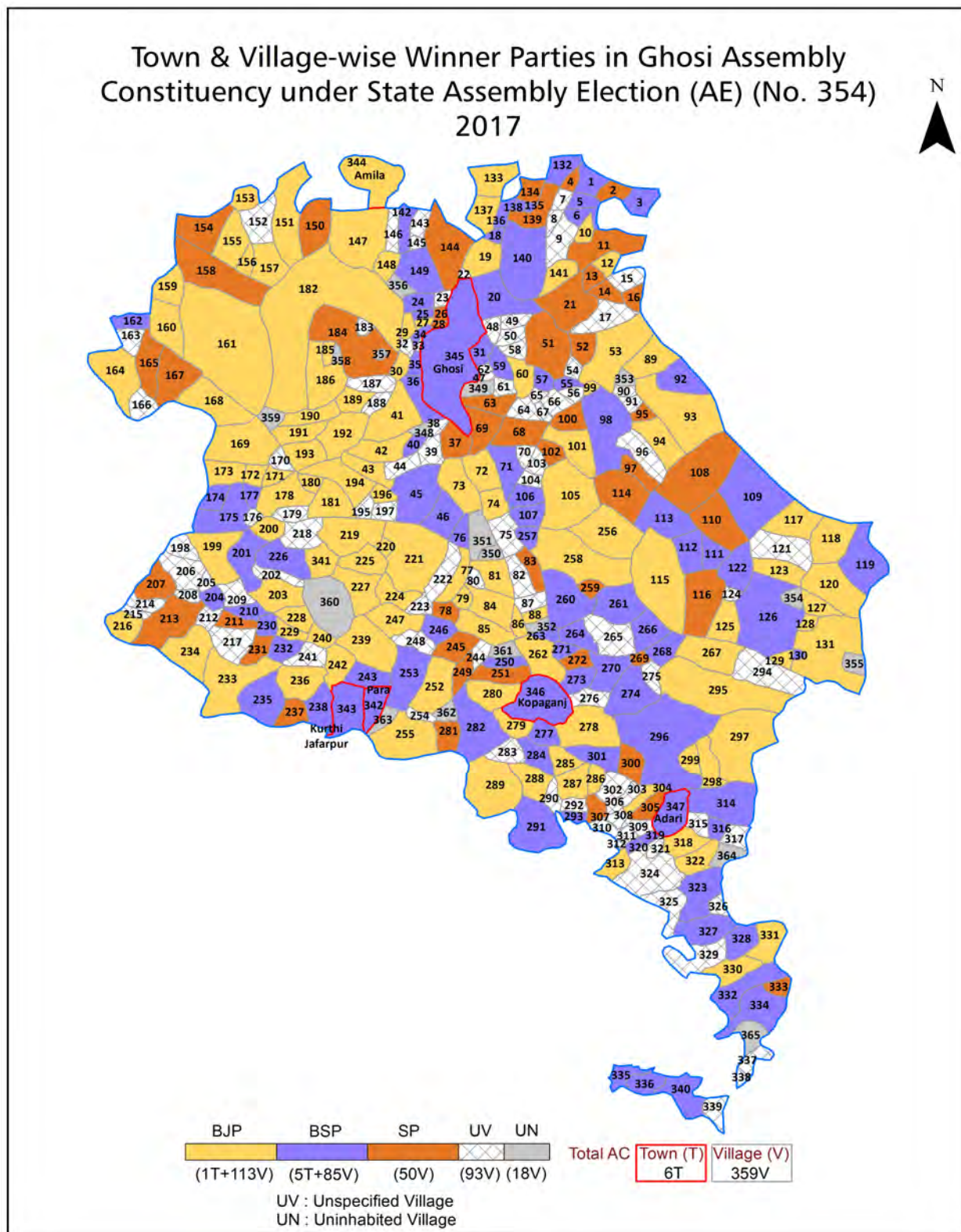
© Datanet India Pvt. Ltd.

All rights reserved. No part of this book may be reproduced, stored in a retrieval system or transmitted in any form or by any means, mechanical photocopying, photographing, scanning, recording or otherwise without the prior written permission of the publisher. Please refer to Disclaimer at page no. 357 for the use of this publication.

Printed in India

No.	Particulars	Page No.
	Introduction	
1	Assembly Constituency - (Vidhan Sabha) at a Glance Features of Assembly as per Delimitation Commission of India (2008)	1-2
	Location and Political Maps	
2	Location Map Boundaries of Assembly Constituency - (Vidhan Sabha) in District Boundaries of Assembly Constituency under Parliamentary Constituency - (Lok Sabha) Town & Village-wise Winner Parties-2022, 2019, 2017, 2014, 2012 and 2009	3-11
	Administrative Setup (2011)	
3	District Sub-district Towns Villages Inhabited Villages Uninhabited Villages Village Panchayat Intermediate Panchayat	12-29
	Demographics (2011)	
4	Population Households Rural/Urban Population Towns and Villages by Population Size Sex Ratio (Total & 0-6 Years) Religious Population Social Population Literacy Rate	30-31
	Electoral Features	
5	Important Dates of Last Elections Held Electors by Gender Service Electors Voters Voters Turnout Polling Stations & Average Number of Electors per Polling Station Electors by Age Group Present Elected Representatives	32-37
	Historical Summary Election Results	
6	Vote Share of Major Parties Winning Margin (Number & Percentage) Polarity of Parties Summary Result of Assembly Segment of Parliamentary Election 2019, 2014, 2009, 2004 and 1999 Summary Result of Assembly Elections 2022, 2017, 2012, 2007, 2002, 1996, 1993, 1991, 1989, 1985, 1980, 1977, 1974, 1969, 1967, 1962, 1957 and 1952	38-63
	Polling Station Level Election Results	
7	Name and Number of Polling Station 2022, 2019, 2017, 2014, 2012 and 2009 Polling Station-wise Electors, Voters & Voters Turnout 2022, 2019, 2017, 2014, 2012 and 2009 Polling Station wise Elections Results 2022, 2019, 2017, 2014, 2012 and 2009	64-312
8	Panchayat and Local Bodies Election Results Panchayat Result 2015 Urban Local Bodies Result 2012	313-335
	Share of Assembly Constituency	
9	Share of Assembly Constituency - (Vidhan Sabha) in State, District and Parliamentary Constituency - (Lok Sabha)	336
	Socio-Economic Amenities (2011)	
10	Access to Administrative Units Agricultural, Manufacturing and Industrial Commodities Demographic Indicators Education Health & Manpower Drinking Water Supply Sanitation Entertainment and Recreations Infrastructure Power Food Allocation Distribution and Marketing of Agriculture Commodities Infrastructure Transport and Road Infrastructure Communication Banking and Financial Services Land Use Irrigation Source	338-352
11	Abbreviation & Sources	353-356
12	Disclaimer	357

Location & Political Map



Administrative Setup

List of Village Panchayat & Intermediate Panchayat (Block) Name - 2011

Village Name	Village Panchayat Name	Intermediate Panchayat Name
Abbupur	Hilsa Kirra	Kopaganj
Adampur	Adampur	Ghosi
Adari	Adari	Kopaganj
Ahemadpur Asana	Ahmadpur	Badraon
Ahirauli	Halini	Kopaganj
Ahirauli	Punapar	Badraon
Akauna	Aimauna	Kopaganj
Akolhi Mubarakpur	Akolhi Muvarpur	Ghosi
Alinagar	Ali Nagar	Kopaganj
Alipur	Alihaspur	Kopaganj
Allipur	Jayram Garh	Kopaganj
Annupar	Annupar	Kopaganj
Araji Taufir	Ranbirpur	Pardaha
Ariyaso	Ariyaso	Ghosi
Auliyapur	Aubiya Pur	Ghosi
Babhanikol	Garthauli	Kopaganj
Baholpur	Machhil	Ghosi
Bairasi	Semari	Ghosi
Bakkarpur	Raisa	Kopaganj
Baluwa	Taigaon	Ghosi
Banakara Buzurg	Baniyapar Sayadtahir	Badraon
Banganwa	Bangava	Badraon
Baniyapar Chak Muztaba	Kalyanpur	Ghosi
Baniyapar Tahir	Baniyavar Saiyad Tahir	Badraon
Bankara Khurd	Sultanpur	Badraon
Bara	Bara	Kopaganj
Baraipar Dwarika	Varaha Dwika	Ghosi
Baraipar Malik	Somaradiha	Ghosi
Barauli Chak Abdulrahman	Baruli	Ghosi

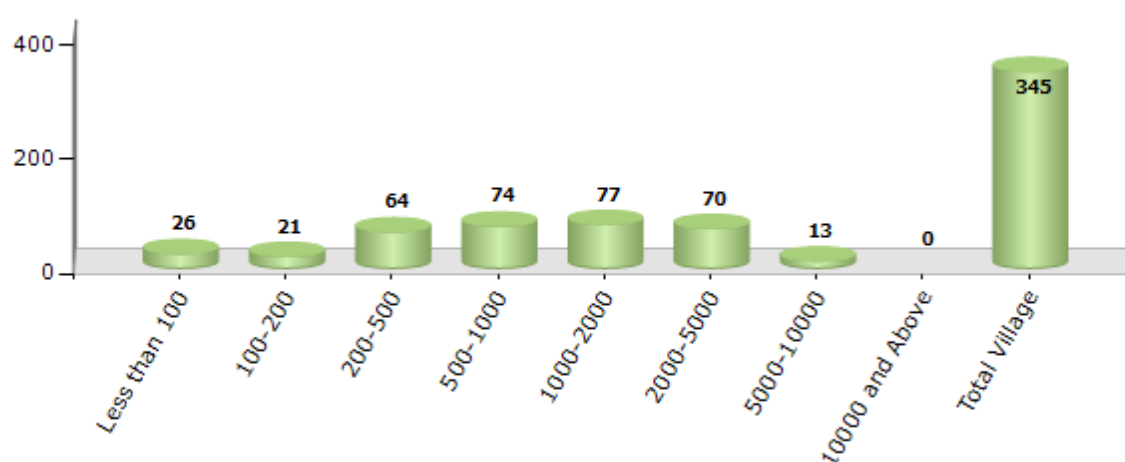
Contd....

Demographics

Number of Villages by Population Size - 2011

Less than 100	100-200	200-500	500-1000	1000-2000	2000-5000	5000-10000	10000 and Above	Total Village
26	21	64	74	77	70	13	0	345

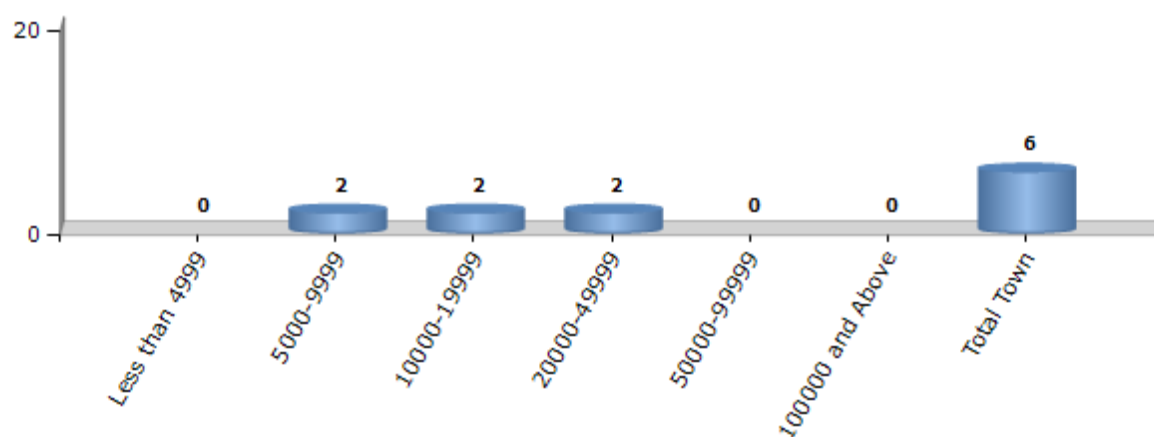
Number of Villages by Population Size - 2011



Number of Towns by Population Size - 2011

Less than 4999	5000-9999	10000-19999	20000-49999	50000-99999	100000 and Above	Total Town
0	2	2	2	0	0	6

Number of Towns by Population Size - 2011



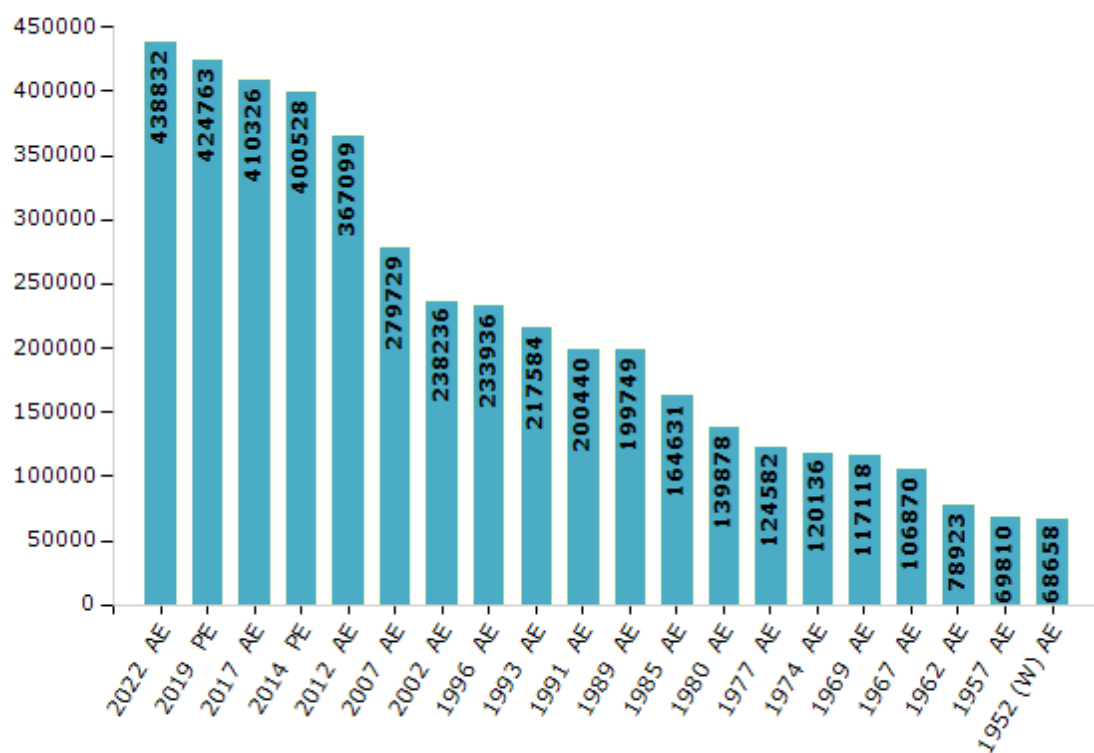
Electoral Features

Electors by Male & Female

Year	Male	Female	Others	Total
2022 AE	235725	203100	7	438832
2019 PE	229638	195121	4	424763
2017 AE	223910	186412	4	410326
2014 PE	220595	179893	40	400528
2012 AE	200363	166695	41	367099
2009 PE	-	-	-	-
2007 AE	149196	130533	-	279729
2004 PE	-	-	-	-
2002 AE	123893	114343	-	238236
1999 PE	-	-	-	-
1996 AE	127003	106933	-	233936
1993 AE	119673	97911	-	217584

Year	Male	Female	Others	Total
1991 AE	120320	80120	-	200440
1989 AE	119846	79903	-	199749
1985 AE	88101	76530	-	164631
1980 AE	74203	65675	-	139878
1977 AE	65791	58791	-	124582
1974 AE	63478	56658	-	120136
1969 AE	61849	55269	-	117118
1967 AE	-	-	-	106870
1962 AE	-	-	-	78923
1957 AE	-	-	-	69810
1952 (W) AE	-	-	-	68658

Number of Electors



Note : AE : Assembly Election, PE : Assembly Segment of Parliamentary Election, (W) : Ghosi West

Historical Summary Election Results

Summary Result of Assembly Election - 2017

Candidate Name	Party	Votes	Votes %
Fagu Chauhan	BJP	88298	36.54
Abbas Ansari	BSP	81295	33.64
Sudhakar	SP	59256	24.52
Vivek Rai	CPI	2285	0.95
Yogendra	IND	1894	0.78
Dev Prakash	RLD	1404	0.58
Vijay Yadav	IND	1252	0.52
Sanjay Kumar Yadav	IND	1113	0.46
Sanjay Singh	IND	914	0.38
Md. Husain	IND	658	0.27
Chaklal	ASP	635	0.26
Dinanath Chauhan	IND	293	0.12
Rampyare Chauhan	BMUP	284	0.12
Darbari Chauhan	IND	249	0.1
Mohan	JANADIP	219	0.09
	NOTA	1585	0.66

Polling Station Level Election Results

Number and Name of Polling Stations (PS) (2022)

Number of Polling Stations	Name of Polling Stations	Number of Polling Stations	Name of Polling Stations
1	Composit Vidyalay Punapar R.N.-1	22	Composit Vidyalay Belbhadrapur R.N.-2
2	Composit Vidyalay Punapar R.N.-2	23	High Se. School Bhojhi R.N.-1
3	Composit Vidyalay Punapar R.N.-3	24	High Se. School Bhojhi R.N.-2
4	Maharana Pratap J.H. School Bhatuli Udmatiya	25	P.P. Sabarahad Biraicha R.N.-1
5	P.P.Valeuer Changri R.N.-1	26	P.P. Sabarahad Biraicha R.N.-2
6	P.P.Valeuer Changri R.N.-2	27	J.H. School Panjepar
7	P.P.Valeuer Changri R.N.-3	28	Kanya P.P. Rampur Tadv East
8	P.P.Valeuer Changri R.N.-4	29	J H School Rampur Tadv Center
9	P.P. Chandrapar R.N.-1	30	J H School Rampur Tadv East
10	P.P. Chandrapar R.N.-2	31	J H School Rampur Tadv West
11	Composit Vidyalay Dadi East	32	Composit Vidyalay Sohad R.N.-1
12	Composit Vidyalay Chamarai	33	Composit Vidyalay Sohad R.N.-2
13	Composit Vidyalay Piuwatal R.N.-1	34	P.P. Bhairapur Khurma R.N.-1
14	Composit Vidyalay Piuwatal R.N.-2	35	P.P. Bhairapur Khurma R.N.-2
15	Composit Vidyalay Piuwatal R.N.-3	36	Composit Vidyalay Amila R.N.-1
16	Composit Vidyalay Piuwatal R.N.-4	37	Composit Vidyalay Amila R.N.-2
17	Composit Vidyalay Piuwatal R.N.-5	38	Composit Vidyalay Amila R.N.-3
18	P.P. Teghna R.N.1	39	Composit Vidyalay Amila R.N.-4
19	P.P. Teghna R.N.2	40	Composit Vidyalay Amila R.N.-5
20	P.P. Umarpur	41	Composit Vidyalay Pidauthsinghpur R.N.-1
21	Composit Vidyalay Belbhadrapur R.N.-1	42	Composit Vidyalay Pidauthsinghpur R.N.-2

Contd....

Polling Station Level Election Results

Polling Station-wise Votes Secured by Overall Top Five Parties in Ghosi Assembly in Assembly Election (AE) under Ghosi Parliamentary Constituency in Uttar Pradesh (2022)

Number of Polling Station	Winner - Dara Singh Chauhan (SP)	Runner-up - Vijay Kumar Rajbhar (BJP)	3rd - Vasim Ekbal Alias Chunnun (BSP)	4th - Priyanka (INC)	5th - Deenanath (VSIP)	NOTA	Other	Total Votes Secured
36	60	221	85	2	0	0	1	369
37	112	220	223	4	2	0	5	566
38	64	339	29	1	1	0	9	443
39	190	245	8	2	0	0	5	450
40	169	372	20	10	2	0	2	575
41	163	284	88	1	1	0	2	539
42	84	388	18	6	16	0	5	517
43	24	117	219	3	8	0	14	385
44	77	292	131	3	1	0	1	505
45	98	250	83	3	4	0	3	441
46	83	281	89	3	6	0	5	467
47	121	25	425	5	1	0	6	583
48	132	221	13	2	3	0	1	372
49	39	145	171	3	2	0	2	362
50	266	233	38	2	2	0	9	550
51	46	30	315	0	3	0	2	396
52	177	108	194	4	2	0	3	488
53	146	190	138	5	4	0	4	487
54	54	79	108	1	1	0	2	245
55	94	111	104	0	4	0	3	316
56	106	143	75	1	4	0	2	331
57	230	66	242	0	1	0	2	541
58	155	174	4	1	1	0	1	336
59	98	206	20	3	0	0	3	330
60	103	63	221	1	0	0	6	394
61	267	84	178	0	1	0	7	537
62	264	53	37	0	0	0	7	361
63	290	62	11	2	0	0	2	367
64	205	51	161	1	0	0	4	422
65	21	50	322	0	2	0	6	401
66	89	190	52	1	2	0	7	341
67	221	23	240	3	0	0	1	488
68	402	53	117	3	0	0	3	578
69	175	45	419	6	3	0	4	652
70	25	96	413	3	1	0	3	541

Contd....

Polling Station Level Election Results

Winner, Runner-up and 3rd Party Position & Winning Margin According to Polling Stations in Ghosi Assembly in Assembly Election (AE) under Ghosi Parliamentary Constituency in Uttar Pradesh (2022)

Polling Station Number	Winner Party	Winner Votes (%)	Runner-up Party	Runner-up Votes (%)	Winning Margin Votes (%)	Third Party	Third Party Votes (%)	Other Votes (%)
71	SP	261 (49.34)	BSP	184 (34.78)	77 (14.56)	BJP	75 (14.18)	9 (1.7)
72	SP	283 (43.4)	BJP	241 (36.96)	42 (6.44)	BSP	115 (17.64)	13 (1.99)
73	SP	249 (49.9)	BJP	232 (46.49)	17 (3.41)	BSP	13 (2.61)	5 (1)
74	SP	173 (60.49)	BJP	90 (31.47)	83 (29.02)	BSP	17 (5.94)	6 (2.1)
75	SP	459 (81.1)	BSP	63 (11.13)	396 (69.97)	BJP	39 (6.89)	5 (0.88)
76	SP	283 (49.39)	BJP	140 (24.43)	143 (24.96)	BSP	140 (24.43)	10 (1.75)
77	SP	231 (40.88)	BSP	183 (32.39)	48 (8.49)	BJP	90 (15.93)	61 (10.8)
78	SP	380 (56.8)	BJP	197 (29.45)	183 (27.35)	BSP	68 (10.16)	24 (3.59)
79	SP	281 (64.75)	BJP	127 (29.26)	154 (35.49)	BSP	13 (3)	13 (3)
80	SP	189 (41.45)	BJP	174 (38.16)	15 (3.29)	BSP	84 (18.42)	9 (1.97)
81	BJP	263 (68.67)	SP	99 (25.85)	164 (42.82)	BSP	10 (2.61)	11 (2.87)
82	BJP	247 (58.39)	SP	162 (38.3)	85 (20.09)	BSP	8 (1.89)	6 (1.42)
83	BSP	395 (63.2)	BJP	118 (18.88)	277 (44.32)	SP	103 (16.48)	9 (1.44)
84	SP	367 (82.84)	BSP	55 (12.42)	312 (70.42)	BJP	15 (3.39)	6 (1.35)
85	SP	506 (63.97)	BJP	215 (27.18)	291 (36.79)	BSP	45 (5.69)	25 (3.16)
86	BSP	226 (75.08)	SP	53 (17.61)	173 (57.47)	BJP	17 (5.65)	5 (1.66)
87	SP	266 (63.03)	BJP	87 (20.62)	179 (42.41)	BSP	65 (15.4)	4 (0.95)
88	SP	215 (58.11)	BSP	127 (34.32)	88 (23.79)	BJP	23 (6.22)	5 (1.35)
89	BSP	375 (55.56)	BJP	217 (32.15)	158 (23.41)	SP	68 (10.07)	15 (2.22)
90	SP	334 (68.16)	BJP	122 (24.9)	212 (43.26)	BSP	22 (4.49)	12 (2.45)
91	SP	299 (51.37)	BSP	173 (29.73)	126 (21.64)	BJP	101 (17.35)	9 (1.55)
92	BJP	376 (72.87)	SP	56 (10.85)	320 (62.02)	BSP	49 (9.5)	35 (6.78)
93	BJP	399 (80.77)	SP	65 (13.16)	334 (67.61)	VSIP	12 (2.43)	18 (3.64)
94	BJP	289 (71.36)	BSP	53 (13.09)	236 (58.27)	SP	49 (12.1)	14 (3.46)
95	SP	204 (40.88)	BJP	165 (33.07)	39 (7.81)	BSP	107 (21.44)	23 (4.61)
96	BJP	264 (52.59)	SP	210 (41.83)	54 (10.76)	BSP	14 (2.79)	14 (2.79)
97	SP	238 (38.08)	BJP	206 (32.96)	32 (5.12)	BSP	166 (26.56)	15 (2.4)
98	BJP	419 (76.32)	SP	103 (18.76)	316 (57.56)	BSP	6 (1.09)	21 (3.83)
99	BJP	241 (45.47)	SP	135 (25.47)	106 (20)	BSP	132 (24.91)	22 (4.15)
100	BJP	570 (80.62)	SP	91 (12.87)	479 (67.75)	BSP	19 (2.69)	27 (3.82)
101	BJP	463 (80.66)	SP	78 (13.59)	385 (67.07)	VSIP	14 (2.44)	19 (3.31)
102	BJP	327 (62.29)	SP	165 (31.43)	162 (30.86)	BSP	17 (3.24)	16 (3.05)
103	BJP	386 (72.97)	SP	102 (19.28)	284 (53.69)	BSP	14 (2.65)	27 (5.1)
104	SP	298 (49.17)	BJP	252 (41.58)	46 (7.59)	BSP	43 (7.1)	13 (2.15)
105	BJP	277 (73.09)	SP	89 (23.48)	188 (49.61)	VSIP	5 (1.32)	8 (2.11)

Contd....

Socio-Economic Amenities - Rural

Access to Education Facilities

Particulars	Number of Villages (% of Population)				
	Available	Not Available	If Not Available (Distance of Nearest Facility)		
			A	B	C
Govt. Primary School	213 (81)	128 (19)	53 (4)	4 (0)	0 (0)
Private Primary School	78 (43)	263 (57)	3 (0)	0 (0)	0 (0)
Govt. Middle School	119 (56)	222 (44)	106 (14)	19 (3)	0 (0)
Private Middle School	52 (32)	289 (68)	19 (5)	1 (0)	1 (0)
Govt. Secondary School	18 (10)	323 (90)	111 (24)	41 (8)	1 (0)
Private Secondary School	43 (28)	298 (72)	61 (14)	11 (3)	0 (0)
Govt. Senior Secondary School	9 (5)	332 (95)	115 (26)	59 (15)	2 (0)
Private Senior Secondary School	30 (22)	311 (78)	51 (12)	12 (3)	1 (0)
Govt. Arts and Science Degree College	1 (0)	340 (100)	48 (11)	47 (12)	53 (18)
Private Arts and Science Degree College	5 (2)	336 (98)	53 (14)	24 (6)	11 (3)
Govt. Engineering College	0 (0)	341 (100)	9 (2)	14 (4)	158 (46)
Private Engineering College	0 (0)	341 (100)	0 (0)	2 (0)	5 (1)
Govt. Medicine College	0 (0)	341 (100)	6 (1)	21 (4)	166 (48)
Private Medicine College	1 (0)	340 (100)	1 (0)	2 (0)	3 (1)
Govt. Management Institute	0 (0)	341 (100)	3 (0)	15 (4)	149 (44)
Private Management Institute	0 (0)	341 (100)	0 (0)	1 (0)	6 (1)
Govt. Polytechnic	0 (0)	341 (100)	3 (1)	13 (3)	242 (71)
Private Polytechnic	0 (0)	341 (100)	0 (0)	1 (0)	6 (2)
Govt. Vocational Training School/ITI	0 (0)	341 (100)	4 (1)	14 (3)	237 (65)
Private Vocational Training School/ITI	0 (0)	341 (100)	3 (1)	0 (0)	3 (1)
Govt. Non Formal Training Centre	0 (0)	341 (100)	3 (0)	12 (1)	165 (45)
Private Non Formal Training Centre	0 (0)	341 (100)	0 (0)	1 (0)	1 (0)
Govt. School For Disabled	0 (0)	341 (100)	3 (0)	8 (1)	117 (30)
Private School For Disabled	0 (0)	341 (100)	0 (0)	0 (0)	28 (8)
Government Others	0 (0)	341 (100)	1 (0)	0 (0)	17 (5)
Private Others	0 (0)	341 (100)	0 (0)	0 (0)	0 (0)

Note : Distance A : Less than 5 km; B : Between 5-10 km; C : 10+ km.; Source : Data Analysis is based on 2011 Census.

DISCLAIMER

The Terms of Use and Disclaimer of Datanet India Private Limited (hereinafter referred to as "Datanet") for use of this analysis report of **Ghosi Assembly Constituency (Ghosi Vidhan Sabha)** :-

1. **Assembly Factbook™** is a Registered Trade Mark owned by Datanet.
2. All the maps are sketched and graphical representation only and have not been drawn to the scale and also not to represent the actual geographical area or boundary of the unit.
3. The data for the aforesaid analysis is based on authentic sources and has been culled from the various publications of Census, CSO and NSSO for district and block level data, various central and state government departments, Central & State Elections Commissions and the concerned Returning Officers' releases, Electoral Rolls, Election results and allied publications, internal assessment, surveys, estimates and analysis. Therefore, certain adjustment of data at micro level may have been done to arrive closer to the macro data.
4. Data have been provided on an "As Is" and "As AVAILABLE" basis
5. The colours shown in the maps or diagram and charts of a particular party, alliance or AC are indicative and do not represent them.
6. This publication which includes maps, sheets, graphs and data would be the property under copyright of Datanet only. The user may use these for its internal study, analysis and research purposes. It's public display, re-selling or any commercial uses by the user are not allowed.
7. Datanet has taken due care and caution in compilation and processing of data and allied information, but does not guarantee the accuracy, adequacy or completeness of any information/analysis and will be not responsible for any errors or omissions or for the results obtained from the use of such information/analysis.
8. All the contents for the publication have been culled from various authentic sources and Datanet reasonably believes such sources to be reliable, but does not make any representations, express or implied as to the accuracy or fitness of use of such information. The information or contents of the information/analysis do not constitute advice and should not be relied upon in making (or refraining from making) any decision. Any reliance placed upon the information provided by Datanet is the sole responsibility and strictly at the user's risk.
9. In no event will Datanet be liable for any damages (including, without limitation, damages for loss of business projects, or loss of profits) arising in contract, tort or otherwise from the use of or inability to use any of its contents, or from any action taken (or refrained from being taken) as a result of using the analysis or any of its contents. Datanet its directors, owners, editors, officials, employees, distributor and agents or any associate will not be liable for any errors in the information contained or any consequences arising from the use of the contents of the provided information/analysis.
10. If any provision of these terms and conditions is held invalid or illegal or unenforceable for any reason by any court of competent jurisdiction, such provision shall be severed and the remainder of provisions of the terms and conditions shall continue in full force and effect as if the Term of Use had been executed with the invalid, illegal or unenforceable provision eliminated.
11. If there are any discrepancies in the information provided, please bring it to attention of Datanet for suitable rectification measures.

Buy Online This Complete Book At
Datanet India eBooks Store

www.indiastatpublications.com

or go directly at

[http://www.indiastatpublications.com/
Assembly_factbook/Uttar Pradesh/Ghosi/ Ghosi](http://www.indiastatpublications.com/Assembly_factbook/Uttar%20Pradesh/Ghosi/Ghosi)

 **indiastat**elections

ISBN : 978-93-5905-851-1



9 789359 058511