



Uttar Pradesh

# Assembly Factbook™

Chitrakoot Assembly Constituency



Key Electoral Data of Chitrakoot  
Assembly Constituency (Vidhan Sabha)

Uttar Pradesh

# **Assembly Factbook™**

Chitrakoot Assembly Constituency



Chitrakoot Vidhan Sabha

**Editor & Director**

Dr. R.K. Thukral

**Research Editor**

Dr. Shafeeq Rahman

**Compiled, Researched and Published by  
Datanet India Pvt. Ltd.**

D-100, 1st Floor,

Okhla Industrial Area, Phase-I,

New Delhi- 110020.

Ph.: 91-11- 43580781-84

Email : support@indiastatpublications.com

Website : www.indiastatelections.com

**Online Book Store :**

www.indiastatpublications.com

**Report No. :** AFB/UP-236-0123

**ISBN :** 978-93-5822-639-3

**First Edition :** January, 2018

**Sixth Updated Edition :** January, 2023

**Price :** Rs.11500/-

US\$ 310

**© Datanet India Pvt. Ltd.**

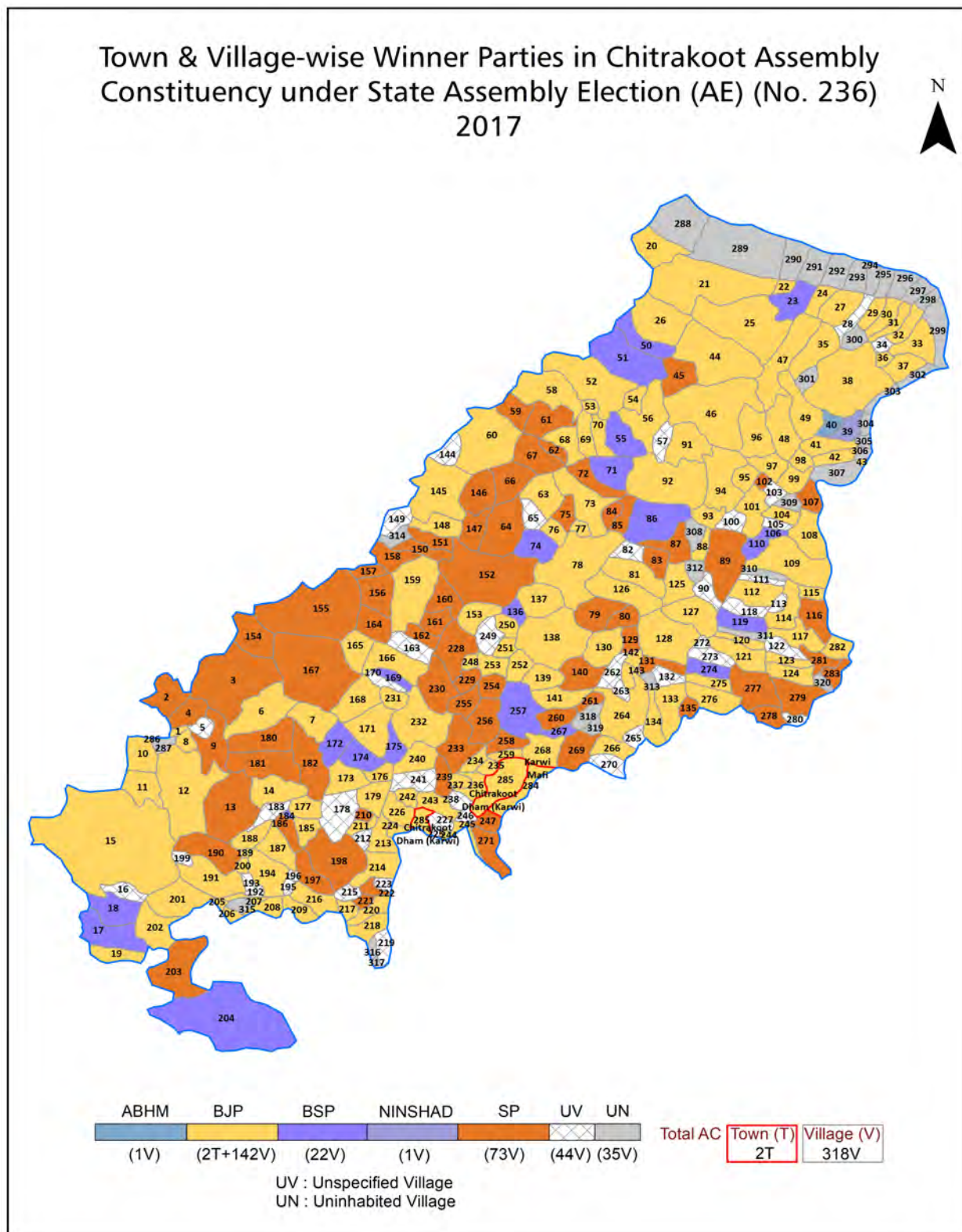
All rights reserved. No part of this book may be reproduced, stored in a retrieval system or transmitted in any form or by any means, mechanical photocopying, photographing, scanning, recording or otherwise without the prior written permission of the publisher. Please refer to Disclaimer at page no. 328 for the use of this publication.

Printed in India

No.	Particulars	Page No.
	<b>Introduction</b>	
1	Assembly Constituency - (Vidhan Sabha) at a Glance   Features of Assembly as per Delimitation Commission of India (2008)	1-2
	<b>Location and Political Maps</b>	
2	Location Map   Boundaries of Assembly Constituency - (Vidhan Sabha) in District   Boundaries of Assembly Constituency under Parliamentary Constituency - (Lok Sabha)   Town & Village-wise Winner Parties-2022, 2019, 2017, 2014, 2012 and 2009	3-11
	<b>Administrative Setup (2011)</b>	
3	District   Sub-district   Towns   Villages   Inhabited Villages   Uninhabited Villages   Village Panchayat   Intermediate Panchayat	12-26
	<b>Demographics (2011)</b>	
4	Population   Households   Rural/Urban Population   Towns and Villages by Population Size   Sex Ratio (Total & 0-6 Years)   Religious Population   Social Population   Literacy Rate	27-28
	<b>Electoral Features</b>	
5	Important Dates of Last Elections Held   Electors by Gender   Service Electors   Voters   Voters Turnout   Polling Stations & Average Number of Electors per Polling Station   Electors by Age Group   Present Elected Representatives	29-34
	<b>Historical Summary Election Results</b>	
6	Vote Share of Major Parties   Winning Margin (Number & Percentage)   Polarity of Parties   Summary Result of Assembly Segment of Parliamentary Election 2019, 2014 and 2009   Summary Result of Assembly Elections 2022, 2017 and 2012	35-43
	<b>Polling Station Level Election Results</b>	
7	Name and Number of Polling Station 2022, 2019, 2017, 2014, 2012 and 2009   Polling Station-wise Electors, Voters & Voters Turnout 2022, 2019, 2017, 2014, 2012 and 2009   Polling Station wise Elections Results 2022, 2019, 2017, 2014, 2012 and 2009	44-286
8	<b>Panchayat and Local Bodies Election Results</b> Panchayat Result 2015   Urban Local Bodies Result 2012	287-306
	<b>Share of Assembly Constituency</b>	
9	Share of Assembly Constituency - (Vidhan Sabha) in State, District and Parliamentary Constituency - (Lok Sabha)	307
	<b>Socio-Economic Amenities (2011)</b>	
10	Access to Administrative Units   Agricultural, Manufacturing and Industrial Commodities   Demographic Indicators   Education   Health & Manpower   Drinking Water Supply   Sanitation   Entertainment and Recreations Infrastructure   Power   Food Allocation Distribution and Marketing of Agriculture Commodities Infrastructure   Transport and Road Infrastructure   Communication   Banking and Financial Services   Land Use   Irrigation Source	309-323
11	<b>Abbreviation &amp; Sources</b>	324-327
12	<b>Disclaimer</b>	328



## Location & Political Map



## Administrative Setup

### List of Village Panchayat & Intermediate Panchayat (Block) Name - 2011

Village Name	Village Panchayat Name	Intermediate Panchayat Name
Agar Hunda	Nahara	Pahari
Ahira	Ahira	Manikpur
Ahmad Ganj	Ranipur Bahatt	Karvi (Chitrakoot Dham)
Airan Mafi	Dubari	Karvi (Chitrakoot Dham)
Ajoura	Ghan	Manikpur
Akabarpur	Akabarpur	Karvi (Chitrakoot Dham)
Akbaria	Kui	Manikpur
Amanpur	Amanpur	Karvi (Chitrakoot Dham)
Amarpur	Amarpur	Karvi (Chitrakoot Dham)
Amenpur Chhiwalaha	Bihara	Karvi (Chitrakoot Dham)
Amiliha	Amiliha	Karvi (Chitrakoot Dham)
Amwan	Baktakhurd	Pahari
Archha Barethi	Archha Barethi	Pahari
Arjunpur	Arjunpur	Pahari
Arki	Arki	Pahari
Asoh	Asoh	Pahari
Atrouli	Asila	Manikpur
Atrouli Mafi	Atrouli Mafi	Pahari
Audaha	Audaha	Pahari
Baboopur	Baboopur	Pahari
Baboopur Chakala	Samaria Jagannath Wasi	Karvi (Chitrakoot Dham)
Bachharan	Bachharan	Pahari
Baghawara	Unay Barna	Pahari
Baglai	Baglai	Karvi (Chitrakoot Dham)
Baihar	Baihar	Karvi (Chitrakoot Dham)
Bakta Bujurg	Bakta Bujurg	Pahari
Bakta Khurd Bangar	Bakta Khurd	Pahari
Balapur Khalasa	Balapur Khalasa	Pahari
Balapur Mafi	Balapur Mafi	Karvi (Chitrakoot Dham)

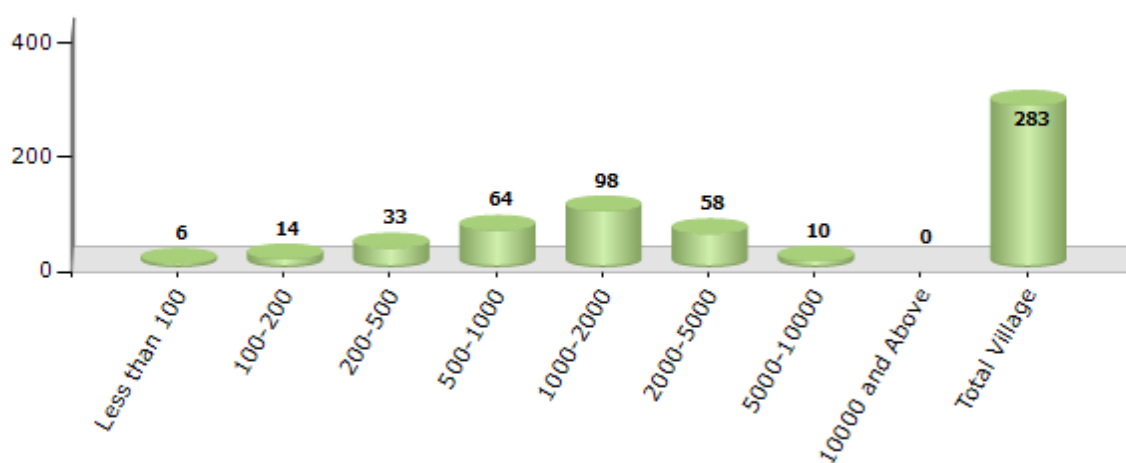
Contd....

## Demographics

### Number of Villages by Population Size - 2011

Less than 100	100-200	200-500	500-1000	1000-2000	2000-5000	5000-10000	10000 and Above	Total Village
6	14	33	64	98	58	10	0	283

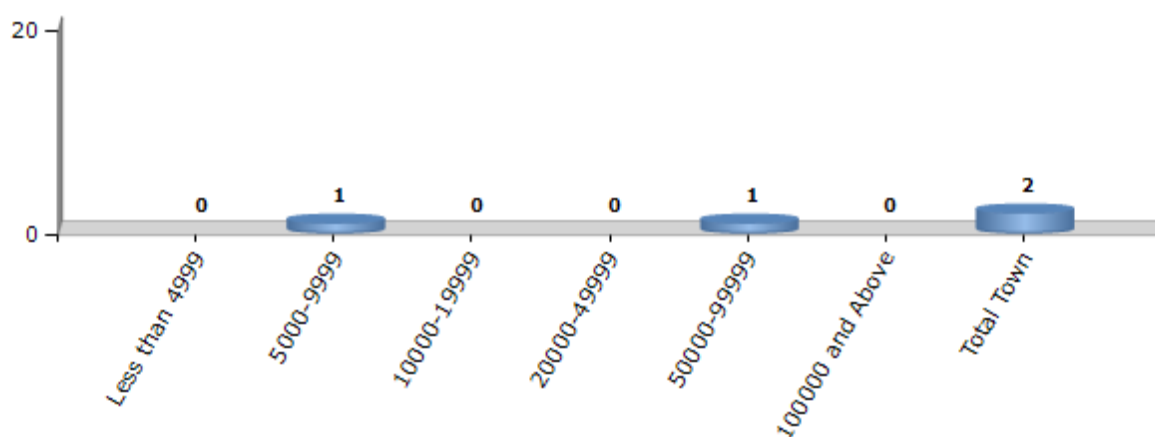
Number of Villages by Population Size - 2011



### Number of Towns by Population Size - 2011

Less than 4999	5000-9999	10000-19999	20000-49999	50000-99999	100000 and Above	Total Town
0	1	0	0	1	0	2

Number of Towns by Population Size - 2011

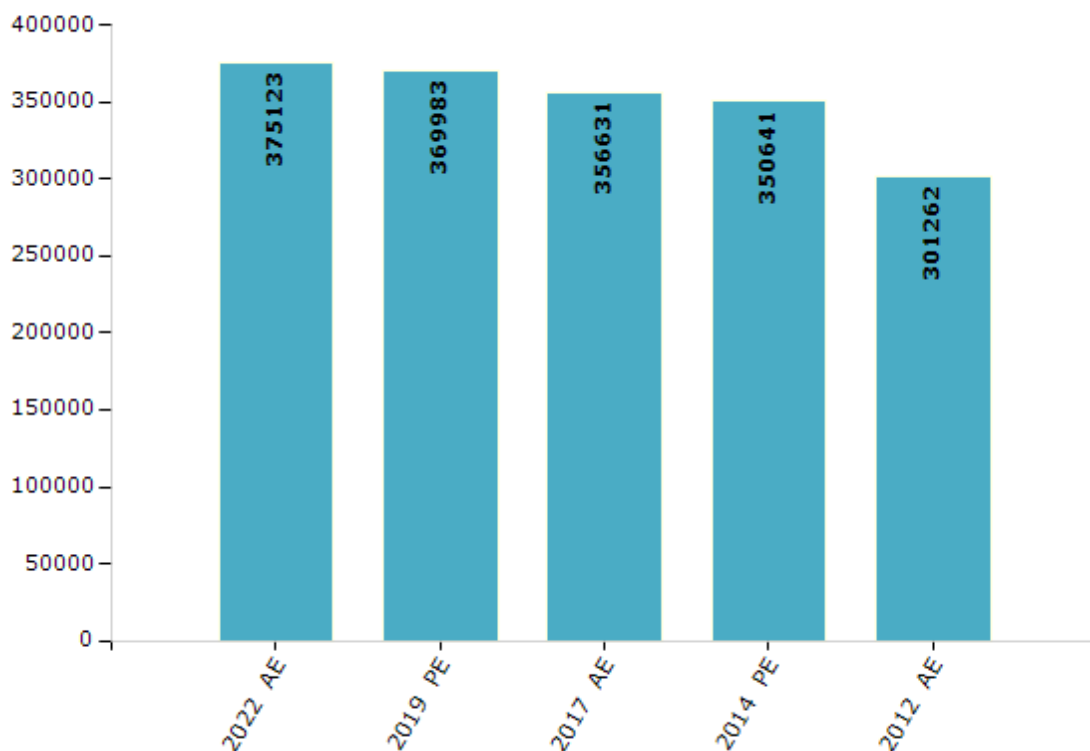


## Electoral Features

### Electors by Male & Female

Year	Male	Female	Others	Total	Year	Male	Female	Others	Total
2022 AE	202559	172551	13	375123	1991 AE	-	-	-	-
2019 PE	199939	170037	7	369983	1989 AE	-	-	-	-
2017 AE	193341	163282	8	356631	1985 AE	-	-	-	-
2014 PE	191793	158840	8	350641	1980 AE	-	-	-	-
2012 AE	169673	131582	7	301262	1977 AE	-	-	-	-
2009 PE	-	-	-	-	1974 AE	-	-	-	-
2007 AE	-	-	-	-	1969 AE	-	-	-	-
2004 PE	-	-	-	-	1967 AE	-	-	-	-
2002 AE	-	-	-	-	1962 AE	-	-	-	-
1999 PE	-	-	-	-	1957 AE	-	-	-	-
1996 AE	-	-	-	-	1952 AE	-	-	-	-
1993 AE	-	-	-	-					

Number of Electors



**Note :** AE : Assembly Election, PE : Assembly Segment of Parliamentary Election

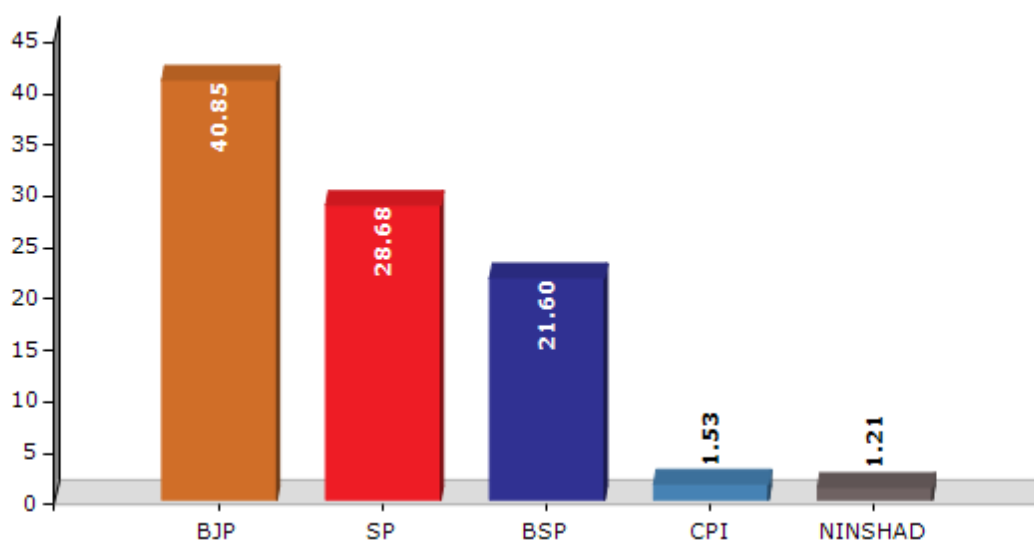


## Historical Summary Election Results

### Summary Result of Assembly Election - 2017

Candidate Name	Party	Votes	Votes %
Chandrika Prasad Upadhyay	BJP	90366	40.85
Veer Singh	SP	63430	28.68
Jagdish Prasad Gautam	BSP	47780	21.6
Amit Yadav	CPI	3378	1.53
Ugrasen	NINSHAD	2679	1.21
Chhedilal	JAM	2543	1.15
Chandra Kishor Dwivedi	ABHM	1746	0.79
Ashish Singh	RLD	1237	0.56
Shiva Kant Shastri	IND	1186	0.54
Durgesh	BMUP	1147	0.52
Satynarayan	IND	1136	0.51
Chandan Singh	SWAJANPA	1042	0.47
	NOTA	3529	1.6

Votes Percentage of Top Parties - 2017



## Polling Station Level Election Results

### Number and Name of Polling Stations (PS) (2022)

Number of Polling Stations	Name of Polling Stations	Number of Polling Stations	Name of Polling Stations
1	primary school bilas east part	22	Upper Primary School Bhadedu-Madhya Bhag
2	Primary School Chillimal East Part	23	Upper Primary School Bhadedu-Dakshin Bhag
3	Primary School Chillimal North Part	24	Primary School Jamauli Majra Bhadedu -Dakshin Bhag
4	Primary School Chillimal West	25	Primary School Atrauli Mafi-Dakshin Part
5	Primary School Payasipurwa Majra Chillimal Ma	26	Primary School Arki-East Part
6	Primary School Chandi North Part	27	Primary School Arki-West Part
7	Primary School Tiraghumai Gangu Dakshin Bhag	28	primary school Kuti Madhya Bhag
8	Primary School Naini Uttar Bhag	29	Upper Primary School Bardwara-East Part
9	Primary School Dhaurahra Uttar Bhag	30	Upper Primary School Bardwara-West Part
10	Composite School Biharwa East Part	31	Primary School Bardwara Part 2-Madhya Part
11	Composite School Biharwa Paschim Bhag	32	Upper Primary School Sursen Part 3-East Part
12	Primary School Bakktahurd - Uttar Bhag	33	Upper Primary School Sursen Part 3-Madhya Part
13	Primary School Amwa Madhya Bhag	34	Upper Primary School Sursen Part 3-West Part
14	Upper Primary School Hasta Madhya Bhag	35	Composite School Mirzapur-Madhya Bhag
15	Primary School Devari Madhya Bhag	36	Primary School Harishanpur Majra Mirzapur-Madhya Bhag
16	Composite School Surwal Uttar Bhag	37	Primary School Veerghumai Surki-Uttar Bhag
17	Prathmik Vidyalay Surwal Situated Mafidar Ka Purwa-South Part	38	Primary School Veerghumai Surki-Dakshin Bhag
18	Composite School Khonpa East Part	39	Primary School Lamiari-Madhya Bhag
19	Composite School Khonpa Pashcim Bhag	40	Upper Primary School Gadauli-East Part
20	Primary School Sikrisalis Madhya Bhag	41	upper primary school gadauli-West Part
21	Upper Primary School Bhadedu	42	Primary School Mamsi Bujurg Paschim Bhag

Contd....

## Polling Station Level Election Results

### Polling Station-wise Votes Secured by Overall Top Five Parties in Chitrakoot Assembly in Assembly Election (AE) under Banda Parliamentary Constituency in Uttar Pradesh (2022)

Number of Polling Station	Winner - Anil Kumar Anil Pradhan (SP)	Runner-up - Chandrika Prasad Upadhyay (BJP)	3rd - Pushpendra Singh (BSP)	4th - Avinash Chandra Tripathi (JANADIP)	5th - Amit Yadav (CPI)	NOTA	Other	Total Votes Secured
36	107	186	61	2	4	2	15	377
37	156	306	56	0	12	4	9	543
38	244	132	242	2	7	16	22	665
39	124	316	295	3	7	6	15	766
40	140	83	275	2	6	7	16	529
41	90	286	128	2	5	6	13	530
42	90	168	91	1	1	6	21	378
43	61	184	177	3	5	8	12	450
44	66	76	19	3	1	3	6	174
45	186	346	61	3	14	14	39	663
46	250	233	236	4	10	8	29	770
47	432	74	11	0	3	7	6	533
48	415	93	42	2	26	6	7	591
49	269	296	67	2	2	9	12	657
50	21	198	47	2	5	2	12	287
51	141	178	162	7	5	9	10	512
52	349	187	86	40	9	22	34	727
53	205	125	209	6	5	6	12	568
54	43	54	250	3	0	2	12	364
55	130	234	208	3	4	3	20	602
56	133	163	163	2	1	16	17	495
57	107	287	14	3	5	8	20	444
58	16	167	91	2	3	2	17	298
59	225	178	119	1	8	11	20	562
60	185	186	76	2	9	2	15	475
61	206	320	90	3	9	6	29	663
62	104	316	146	3	4	11	30	614
63	159	400	67	2	14	14	12	668
64	72	109	279	3	2	6	12	483
65	160	118	10	1	5	8	9	311
66	406	101	11	3	7	32	29	589
67	210	142	47	0	3	6	7	415
68	21	271	62	0	4	1	9	368
69	227	206	46	1	5	3	28	516
70	30	401	133	3	7	9	19	602

Contd....

## Polling Station Level Election Results

**Winner, Runner-up and 3rd Party Position & Winning Margin According to Polling Stations in Chitrakoot Assembly in Assembly Election (AE) under Banda Parliamentary Constituency in Uttar Pradesh (2022)**

Polling Station Number	Winner Party	Winner Votes (%)	Runner-up Party	Runner-up Votes (%)	Winning Margin Votes (%)	Third Party	Third Party Votes (%)	Other Votes (%)
71	BJP	205 (49.76)	BSP	149 (36.17)	56 (13.59)	SP	35 (8.5)	23 (5.58)
72	BJP	288 (66.98)	BSP	60 (13.95)	228 (53.03)	SP	58 (13.49)	24 (5.58)
73	SP	340 (82.13)	BJP	46 (11.11)	294 (71.02)	BSP	15 (3.62)	13 (3.14)
74	BJP	449 (64.88)	SP	129 (18.64)	320 (46.24)	BSP	53 (7.66)	61 (8.82)
75	BJP	220 (67.28)	BSP	85 (25.99)	135 (41.29)	SP	13 (3.98)	9 (2.75)
76	BJP	367 (50.62)	SP	252 (34.76)	115 (15.86)	BSP	41 (5.66)	65 (8.97)
77	BJP	271 (69.31)	SP	91 (23.27)	180 (46.04)	BSP	7 (1.79)	22 (5.63)
78	BJP	227 (55.23)	SP	157 (38.2)	70 (17.03)	BSP	13 (3.16)	14 (3.41)
79	BJP	221 (48.57)	SP	114 (25.05)	107 (23.52)	BSP	87 (19.12)	33 (7.25)
80	BJP	293 (46.96)	SP	205 (32.85)	88 (14.11)	BSP	70 (11.22)	56 (8.97)
81	BJP	187 (48.2)	SP	114 (29.38)	73 (18.82)	BSP	67 (17.27)	20 (5.15)
82	BJP	228 (51.12)	BSP	114 (25.56)	114 (25.56)	SP	56 (12.56)	48 (10.76)
83	BJP	240 (52.29)	SP	103 (22.44)	137 (29.85)	BSP	88 (19.17)	28 (6.1)
84	SP	263 (55.25)	BSP	104 (21.85)	159 (33.4)	BJP	81 (17.02)	28 (5.88)
85	BJP	252 (55.26)	BSP	80 (17.54)	172 (37.72)	BUNKD	57 (12.5)	67 (14.69)
86	BJP	160 (43.48)	SP	142 (38.59)	18 (4.89)	BSP	49 (13.32)	17 (4.62)
87	SP	227 (55.5)	BSP	101 (24.69)	126 (30.81)	BJP	73 (17.85)	8 (1.96)
88	SP	204 (53.68)	BJP	86 (22.63)	118 (31.05)	BSP	68 (17.89)	22 (5.79)
89	SP	222 (40.14)	BSP	154 (27.85)	68 (12.29)	BJP	141 (25.5)	36 (6.51)
90	SP	220 (79.14)	BSP	41 (14.75)	179 (64.39)	BJP	10 (3.6)	7 (2.52)
91	SP	164 (42.49)	BSP	143 (37.05)	21 (5.44)	BJP	59 (15.28)	20 (5.18)
92	SP	372 (52.39)	BJP	208 (29.3)	164 (23.09)	BSP	77 (10.85)	53 (7.46)
93	BSP	143 (52.19)	SP	91 (33.21)	52 (18.98)	BJP	25 (9.12)	15 (5.47)
94	BJP	367 (59.87)	BSP	118 (19.25)	249 (40.62)	SP	98 (15.99)	30 (4.89)
95	BJP	232 (46.68)	SP	124 (24.95)	108 (21.73)	BSP	87 (17.51)	54 (10.87)
96	BJP	336 (68.85)	BSP	73 (14.96)	263 (53.89)	SP	46 (9.43)	33 (6.76)
97	BJP	175 (50.72)	BSP	88 (25.51)	87 (25.21)	SP	61 (17.68)	21 (6.09)
98	BSP	89 (52.35)	SP	50 (29.41)	39 (22.94)	BJP	22 (12.94)	9 (5.29)
99	BJP	415 (66.08)	SP	78 (12.42)	337 (53.66)	BSP	74 (11.78)	61 (9.71)
100	BSP	287 (39.75)	BJP	205 (28.39)	82 (11.36)	SP	188 (26.04)	42 (5.82)
101	BJP	384 (45.44)	BSP	271 (32.07)	113 (13.37)	SP	155 (18.34)	35 (4.14)
102	SP	328 (58.36)	BSP	206 (36.65)	122 (21.71)	BJP	5 (0.89)	23 (4.09)
103	SP	302 (74.2)	BJP	90 (22.11)	212 (52.09)	BSP	7 (1.72)	8 (1.97)
104	SP	248 (53.22)	BSP	158 (33.91)	90 (19.31)	BJP	32 (6.87)	28 (6.01)
105	SP	165 (43.88)	BSP	86 (22.87)	79 (21.01)	BJP	70 (18.62)	55 (14.63)

Contd....

## Socio-Economic Amenities - Rural

### Access to Education Facilities

Particulars	Number of Villages (% of Population)				
	Available	Not Available	If Not Available (Distance of Nearest Facility)		
			A	B	C
Govt. Primary School	252 (98)	31 (2)	16 (1)	3 (0)	0 (0)
Private Primary School	24 (19)	259 (81)	1 (0)	0 (0)	0 (0)
Govt. Middle School	172 (83)	111 (17)	57 (8)	6 (1)	1 (0)
Private Middle School	30 (21)	253 (79)	4 (1)	1 (0)	1 (0)
Govt. Secondary School	14 (15)	269 (85)	22 (5)	67 (17)	15 (4)
Private Secondary School	23 (19)	260 (81)	32 (11)	31 (10)	17 (6)
Govt. Senior Secondary School	11 (12)	272 (88)	22 (5)	65 (19)	44 (15)
Private Senior Secondary School	10 (7)	273 (93)	17 (5)	24 (8)	26 (11)
Govt. Arts and Science Degree College	1 (2)	282 (98)	14 (5)	28 (12)	131 (41)
Private Arts and Science Degree College	2 (1)	281 (99)	3 (1)	20 (5)	16 (8)
Govt. Engineering College	0 (0)	283 (100)	4 (2)	3 (2)	92 (36)
Private Engineering College	0 (0)	283 (100)	0 (0)	0 (0)	37 (11)
Govt. Medicine College	2 (1)	281 (99)	10 (3)	9 (2)	115 (43)
Private Medicine College	0 (0)	283 (100)	0 (0)	3 (1)	9 (3)
Govt. Management Institute	1 (0)	282 (100)	4 (1)	0 (0)	74 (29)
Private Management Institute	0 (0)	283 (100)	2 (0)	0 (0)	20 (5)
Govt. Polytechnic	1 (0)	282 (100)	0 (0)	1 (0)	134 (47)
Private Polytechnic	0 (0)	283 (100)	0 (0)	0 (0)	6 (3)
Govt. Vocational Training School/ITI	1 (0)	282 (100)	1 (0)	4 (1)	133 (49)
Private Vocational Training School/ITI	4 (1)	279 (99)	0 (0)	0 (0)	8 (3)
Govt. Non Formal Training Centre	5 (2)	278 (98)	0 (0)	0 (0)	86 (31)
Private Non Formal Training Centre	2 (1)	281 (99)	0 (0)	0 (0)	2 (1)
Govt. School For Disabled	2 (2)	281 (98)	10 (3)	8 (3)	37 (16)
Private School For Disabled	0 (0)	283 (100)	2 (0)	7 (4)	79 (26)
Government Others	0 (0)	283 (100)	0 (0)	0 (0)	3 (1)
Private Others	0 (0)	283 (100)	0 (0)	0 (0)	0 (0)

Note : Distance A : Less than 5 km; B : Between 5-10 km; C : 10+ km.; Source : Data Analysis is based on 2011 Census.



## DISCLAIMER

The Terms of Use and Disclaimer of Datanet India Private Limited (hereinafter referred to as "Datanet") for use of this analysis report of **Chitrakoot Assembly Constituency (Chitrakoot Vidhan Sabha)** :-

1. **Assembly Factbook™** is a Registered Trade Mark owned by Datanet.
2. All the maps are sketched and graphical representation only and have not been drawn to the scale and also not to represent the actual geographical area or boundary of the unit.
3. The data for the aforesaid analysis is based on authentic sources and has been culled from the various publications of Census, CSO and NSSO for district and block level data, various central and state government departments, Central & State Elections Commissions and the concerned Returning Officers' releases, Electoral Rolls, Election results and allied publications, internal assessment, surveys, estimates and analysis. Therefore, certain adjustment of data at micro level may have been done to arrive closer to the macro data.
4. Data have been provided on an "As Is" and "As AVAILABLE" basis
5. The colours shown in the maps or diagram and charts of a particular party, alliance or AC are indicative and do not represent them.
6. This publication which includes maps, sheets, graphs and data would be the property under copyright of Datanet only. The user may use these for its internal study, analysis and research purposes. It's public display, re-selling or any commercial uses by the user are not allowed.
7. Datanet has taken due care and caution in compilation and processing of data and allied information, but does not guarantee the accuracy, adequacy or completeness of any information/analysis and will be not responsible for any errors or omissions or for the results obtained from the use of such information/analysis.
8. All the contents for the publication have been culled from various authentic sources and Datanet reasonably believes such sources to be reliable, but does not make any representations, express or implied as to the accuracy or fitness of use of such information. The information or contents of the information/analysis do not constitute advice and should not be relied upon in making (or refraining from making) any decision. Any reliance placed upon the information provided by Datanet is the sole responsibility and strictly at the user's risk.
9. In no event will Datanet be liable for any damages (including, without limitation, damages for loss of business projects, or loss of profits) arising in contract, tort or otherwise from the use of or inability to use any of its contents, or from any action taken (or refrained from being taken) as a result of using the analysis or any of its contents. Datanet its directors, owners, editors, officials, employees, distributor and agents or any associate will not be liable for any errors in the information contained or any consequences arising from the use of the contents of the provided information/analysis.
10. If any provision of these terms and conditions is held invalid or illegal or unenforceable for any reason by any court of competent jurisdiction, such provision shall be severed and the remainder of provisions of the terms and conditions shall continue in full force and effect as if the Term of Use had been executed with the invalid, illegal or unenforceable provision eliminated.
11. If there are any discrepancies in the information provided, please bring it to attention of Datanet for suitable rectification measures.

**Buy Online This Complete Book At  
Datanet India eBooks Store**

**[www.indiastatpublications.com](http://www.indiastatpublications.com)**

**or go directly at**

**[http://www.indiastatpublications.com/  
Assembly\\_factbook/Uttar Pradesh/Banda/ Chitrakoot](http://www.indiastatpublications.com/Assembly_factbook/Uttar%20Pradesh/Banda/Chitrakoot)**

 **indiastat**elections

ISBN : 978-93-5822-639-3



9 789358 226393