



Bihar

# Assembly Factbook™

Chenari Assembly Constituency



Key Electoral Data of Chenari  
Assembly Constituency (Vidhan Sabha)



indiastatpublications

Bihar

# **Assembly Factbook™**

Chenari Assembly Constituency



Chenari Vidhan Sabha

## **Editor & Director**

Dr. R.K. Thukral

## **Research Editor**

Dr. Shafeeq Rahman

## **Compiled, Researched and Published by Datanet India Pvt. Ltd.**

D-100, 1st Floor,

Okhla Industrial Area, Phase-I,  
New Delhi- 110020.

Ph.: 91-11- 43580781-84

Email : support@indiastatpublications.com

Website : www.indiastatelections.com

## **Online Book Store :**

www.indiastatpublications.com

**Report No. :** AFB/BR-207-0123

**ISBN :** 978-93-5313-067-1

**First Edition :** January, 2018

**Sixth Updated Edition :** January, 2023

**Price :** Rs. 11500/-

US\$ 310

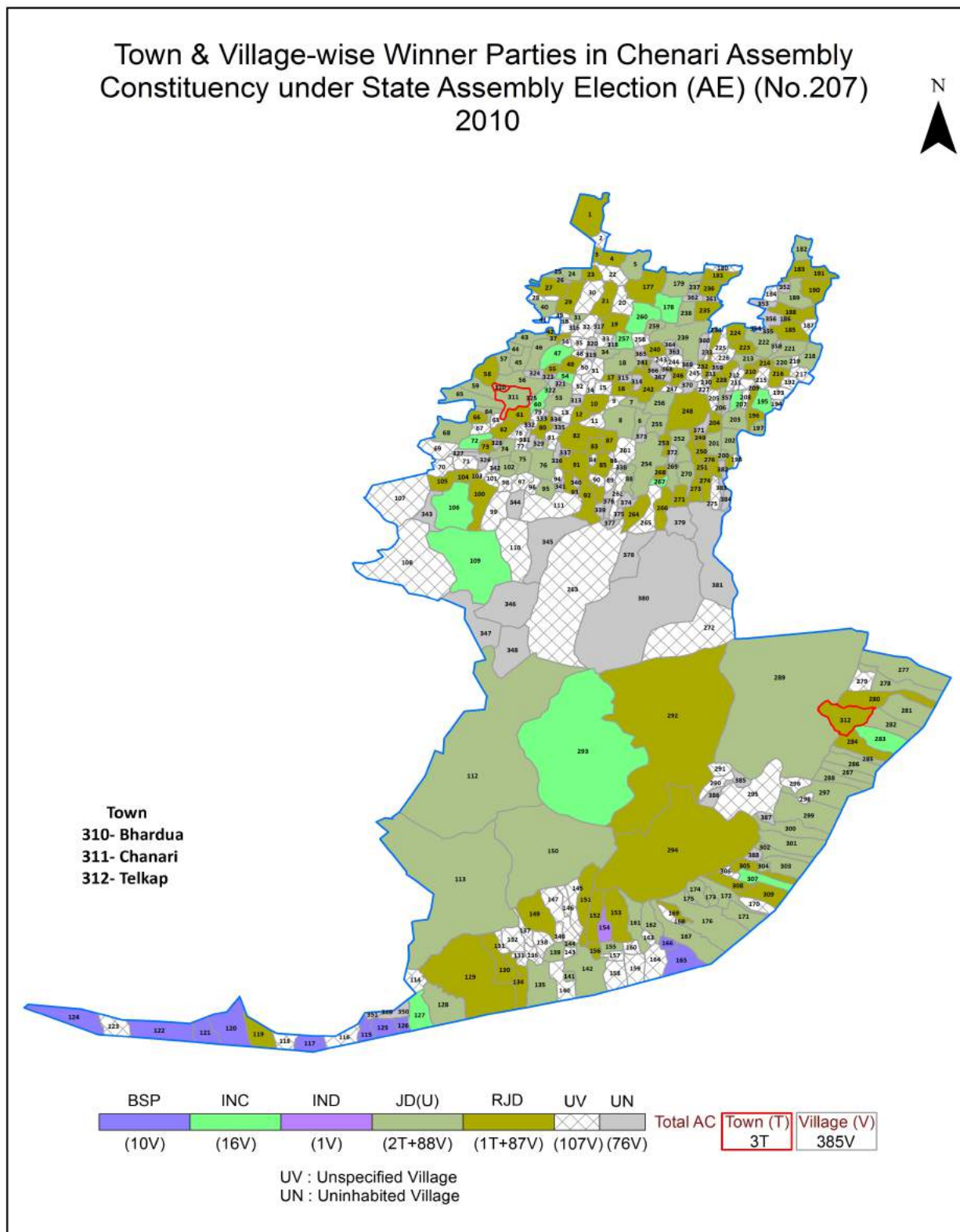
**© Datanet India Pvt. Ltd.**

All rights reserved. No part of this book may be reproduced, stored in a retrieval system or transmitted in any form or by any means, mechanical photocopying, photographing, scanning, recording or otherwise without the prior written permission of the publisher. Please refer to Disclaimer at page no. 224 for the use of this publication.

Printed in India

No.	Particulars	Page No.
	<b>Introduction</b>	
1	Assembly Constituency - (Vidhan Sabha) at a Glance   Features of Assembly as per Delimitation Commission of India (2008)	1-2
	<b>Location and Political Maps</b>	
2	Location Map   Boundaries of Assembly Constituency - (Vidhan Sabha) in District   Boundaries of Assembly Constituency under Parliamentary Constituency - (Lok Sabha)   Town & Village-wise Winner Parties- 2019, 2015, 2014, 2010 and 2009	3-11
	<b>Administrative Setup (2011)</b>	
3	District   Sub-district   Towns   Villages   Inhabited Villages   Uninhabited Villages   Village Panchayat   Intermediate Panchayat	11-26
	<b>Demographics (2011)</b>	
4	Population   Households   Rural/Urban Population   Towns and Villages by Population Size   Sex Ratio (Total & 0-6 Years)   Religious Population   Social Population   Literacy Rate	27-28
	<b>Electoral Features</b>	
5	Important Dates of Last Elections Held   Electors by Gender   Service Electors   Voters   Voters Turnout   Polling Stations & Average Number of Electors per Polling Station   Electors by Age Group   Present Elected Representatives	29-34
	<b>Historical Summary Election Results</b>	
6	Vote Share of Major Parties   Winning Margin (Number & Percentage)   Polarity of Parties   Summary Result of Assembly Segment of Parliamentary Elections 2019, 2014, 2009, 2004 and 1999   Summary Result of Assembly Elections 2020, 2015, 2010, 2005 (Oct), 2005 (Feb), 2000, 1995, 1990, 1985, 1980, 1977, 1972, 1969, 1967 and 1962	35-59
	<b>Polling Station Level Election Results</b>	
7	Name and Number of Polling Station 2019, 2015, 2014, 2010 and 2009   Polling Station-wise Electors, Voters & Voters Turnout 2019, 2015, 2014, 2010 and 2009   Polling Station wise Elections Results 2019, 2015, 2014, 2010 and 2009	60-204
	<b>Share of Assembly Constituency</b>	
8	Share of Assembly Constituency - (Vidhan Sabha) in State, District and Parliamentary Constituency - (Lok Sabha)	205
	<b>Socio-Economic Amenities (2011)</b>	
9	Access to Administrative Units   Agricultural, Manufacturing and Industrial Commodities   Demographic Indicators   Education   Health & Manpower   Drinking Water Supply   Sanitation   Entertainment and Recreations Infrastructure   Power   Food Allocation Distribution and Marketing of Agriculture Commodities Infrastructure   Transport and Road Infrastructure   Communication   Banking and Financial Services   Land Use   Irrigation Source	207-220
10	<b>Abbreviation &amp; Sources</b>	221-223
11	<b>Disclaimer</b>	224

## Location & Political Map





## Administrative Setup

### List of Village Panchayat & Intermediate Panchayat (Block) Name - 2011

Village Name	Village Panchayat Name	Intermediate Panchayat Name
Adhaura	Ullibhanahi	Nauhatta
Akbarpur	Akbar Pur	Rohtas
Alampur	Alampur	Sheosagar
Amahuan	Tiura	Nauhatta
Amarkha	Bhadara	Nauhatta
Amdih	Rohtas Garh	Rohtas
Amtha	Alampur	Sheosagar
Anandi Chak	Jayantipur, Ullibhanahi	Nauhatta
Auraiya	Ugahni	Chenari
Auraiya	Bhadara	Nauhatta
Badal Garh	Malhipur	Chenari
Baddi	Konki	Sheosagar
Baheri	Sikraur	Sheosagar
Baijalpur	Ullibhanahi	Nauhatta
Bairia	Ugahni	Chenari
Baknaur	Baknaura	Rohtas
Balbhadarpur	Ullibhanahi	Nauhatta
Baliari	Shahpur	Nauhatta
Bamhaur	Sheosagar	Sheosagar
Banauli	Banauli	Chenari
Bandu	Bhadara	Nauhatta
Baniadih	Phulwaria	Chenari
Banjari	Banjari	Rohtas
Banrua	Nad	Sheosagar
Bansil	Diharia	Chenari
Banua	Tilokhar	Nauhatta
Barahtali Barki	Kenarkala	Chenari
Barahtali Chhotki	Kenarkala	Chenari
Baraicha	Bhadara	Nauhatta

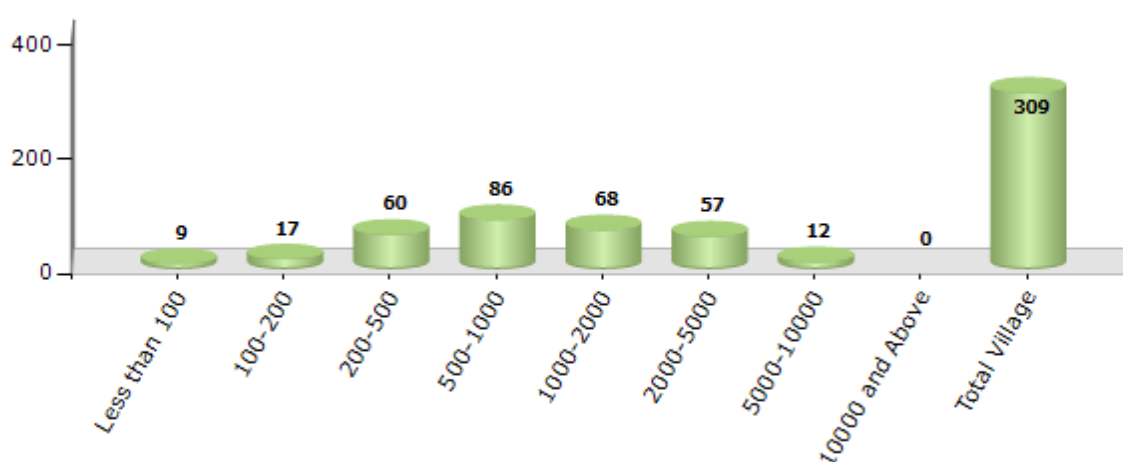
Contd....

## Demographics

### Number of Villages by Population Size - 2011

Less than 100	100-200	200-500	500-1000	1000-2000	2000-5000	5000-10000	10000 and Above	Total Village
9	17	60	86	68	57	12	0	309

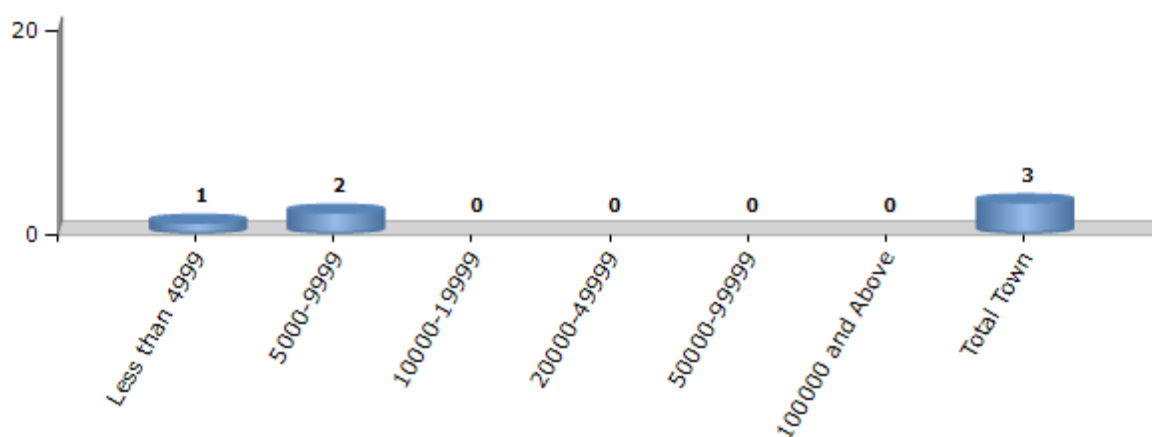
Number of Villages by Population Size - 2011



### Number of Towns by Population Size - 2011

Less than 4999	5000-9999	10000-19999	20000-49999	50000-99999	100000 and Above	Total Town
1	2	0	0	0	0	3

Number of Towns by Population Size - 2011

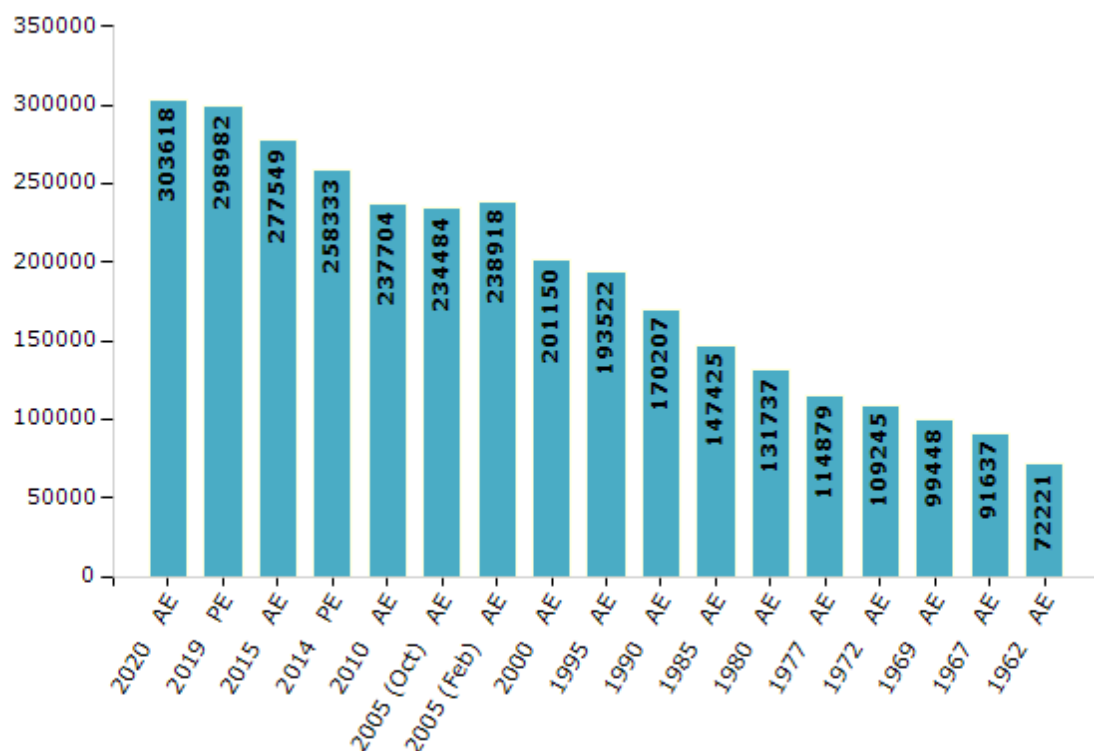


## Electoral Features

### Electors by Male & Female

Year	Male	Female	Others	Total	Year	Male	Female	Others	Total
2020 AE	160032	143582	4	303618	1995 AE	97935	95587	-	193522
2019 PE	158596	140381	5	298982	1990 AE	91078	79129	-	170207
2015 AE	150693	126853	3	277549	1985 AE	79295	68130	-	147425
2014 PE	139415	118917	1	258333	1980 AE	68894	62843	-	131737
2010 AE	128333	109371	0	237704	1977 AE	59519	55360	-	114879
2009 PE	-	-	-	-	1972 AE	54357	54888	-	109245
2005 (Oct) AE	124444	110040	-	234484	1969 AE	50679	48769	-	99448
2005 (Feb) AE	127852	111066	-	238918	1967 AE	-	-	-	91637
2004 PE	-	-	-	-	1962 AE	-	-	-	72221
2000 AE	108700	92450	-	201150	1957 AE	-	-	-	-
1999 PE	-	-	-	-	1952 AE	-	-	-	-

Number of Electors



**Note :** AE : Assembly Election, PE : Assembly Segment of Parliamentary Election

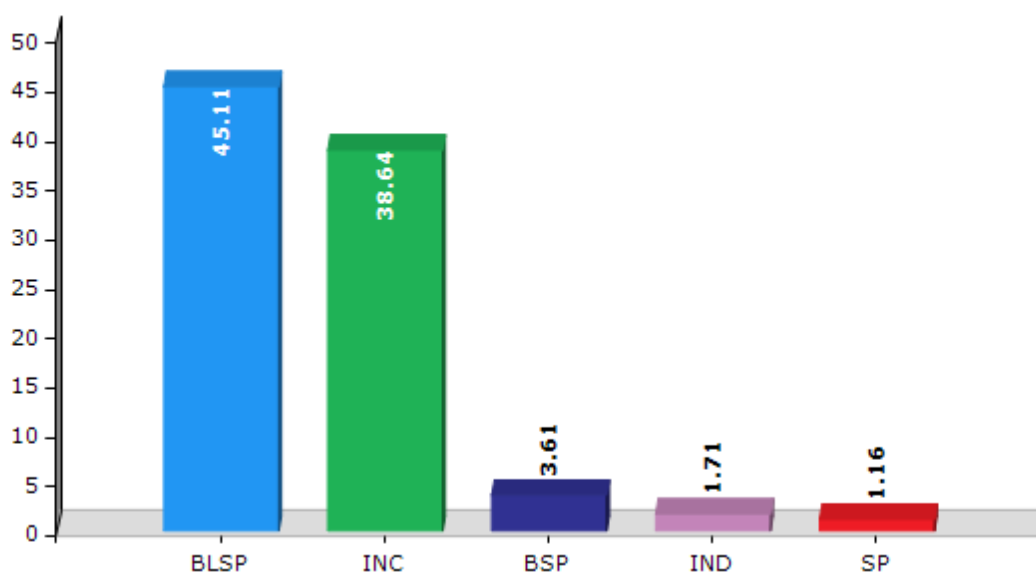


## Historical Summary Election Results

### Summary Result of Assembly Election - 2015

Candidate Name	Party	Votes	Votes %
Lalan Paswan	BLSP	68148	45.11
Mangal Ram	INC	58367	38.64
Ramendra Ram	BSP	5455	3.61
Aman Kumar	IND	2589	1.71
Ravi Paswan	SP	1752	1.16
Mahendra Baitha	IND	1369	0.91
Chinta Devi	RSWD	1240	0.82
Bipin Ram	CPI(ML)(L)	854	0.57
Satyanarayan Paswan	AD	804	0.53
Ramashish Ram	SSD	659	0.44
Ravishankar Prasad	JPS	533	0.35
Pradeep Kumar	BMUP	421	0.28
	NOTA	8876	5.88

Votes Percentage of Top Parties - 2015



## Polling Station Level Election Results

### Number and Name of Polling Stations (PS) (2015)

Number of Polling Stations	Name of Polling Stations	Number of Polling Stations	Name of Polling Stations
1	Kanya Hindi Mdhay Vidyal Khurmabad (Purvi Bhag)	22	Anganabadi Kendra Jagadihara
2	Kanya Hindi Mdhay Vidyal Khurmabad (Pascchimi Bhag)	23	Prathamik Vidyalay Kenarakhurd
3	Madhya Vidyalay Khurmabad (Utari Bhag)	24	Utkramit Urdu Madhya Vidyalay Baratalikala
4	Madhya Vidyalay Kurmabad (Dakshini Bhag)	25	Madhya Vidyalay Chandrakaiti
5	Uchcha Vidyalay Saraiya	26	Prathamik Vidyalay Naraura
6	Prathamik Vidyalay Sabarabad	27	Prathamik Vidyalay Kenarakhurd
7	Utkramit Mdhy Vidhayaly Chhtratand	28	Panchayat Bhavan Kenarakala
8	Madhya Vidyalay Tekari	29	Prathamik Vidyalay Basantapur
9	Utkramit Madhya Vidyalay Rediyakala	30	Prathamik Vidyalay Vilasapur
10	Madhya Vidyalay Telari (Purwibhag)	31	Prathamik Vidyalay Vilasapur (Dakshin Bhag)
11	Utkramit Madhya Vidyalay Chenaharua	32	Utkramit Madhya Vidyalay Dihi
12	Panchayat Bhavan Telari	33	Utkramit Madhya Vidyalay Pithiyav
13	Madhya Vidyalay Telari (Pashchimi Bhag)	34	Utkramit Madhya Vidyalay Khudhanukala
14	Prathamik Vidyalay Shahapur	35	Utkramit Madhya Vidyalay Devadihi
15	Utkramit Vidyalay Piyakala	36	Prathamik Vidyalay Samahuta
16	Prathamik Vidyalay Tenduni	37	Utkramit Madhya Vidyalay Lodhi
17	Prathamik Vidyalay Langar Kekai	38	Prathamik Vidyalay Palaundha
18	Utkramit Madhya Vidyalay Khairaved	39	Prathamik Vidyalay Urda
19	Samudayik Bhavan Dihariya	40	Madhya Vidyalay Naraina Purwi Bhag
20	Utkramit Madhya Vidyalay Dighat	41	Madhya Vidyalay Naraina Pashchimi Bhag
21	Utkramit Madhya Vidyalay Dumari	42	Madhya Vidyalay Hata Utari Bhag

Contd....

## Polling Station Level Election Results

### Polling Station-wise Votes Secured by Overall Top Five Parties in Chenari Assembly in Assembly Election (AE) under Sasaram Parliamentary Constituency in Bihar (2015)

Number of Polling Station	Winner - Lalan Paswan (BLSP)	Runner-up - Mangal Ram (INC)	3rd - Ramendra Ram (BSP)	4th - Aman Kumar (IND)	5th - Ravi Paswan (SP)	NOTA	Other	Total Votes Secured
36	87	71	1	0	2	6	2	169
37	218	191	2	0	7	16	8	442
38	280	171	5	2	2	14	9	483
39	414	204	2	9	13	37	14	693
40	257	194	3	2	4	21	3	484
41	231	325	25	5	10	23	21	640
42	216	392	4	2	4	13	3	634
43	306	151	2	5	7	22	15	508
44	188	214	10	8	31	23	16	490
44A	202	208	3	1	0	25	15	454
45	359	127	1	3	2	11	6	509
46	248	180	3	4	6	12	4	457
47	216	188	39	4	0	12	18	477
48	483	135	13	4	1	12	12	660
49	396	148	21	5	4	11	6	591
50	289	352	11	3	4	16	2	677
51	207	280	8	49	12	20	15	591
52	133	122	4	17	5	8	50	339
53	206	147	4	8	1	27	12	405
54	106	19	2	6	2	6	5	146
55	251	56	5	6	12	24	10	364
56	132	66	63	8	3	29	6	307
57	180	40	2	9	12	17	6	266
58	162	590	16	8	7	21	13	817
59	118	253	4	4	3	12	2	396
60	288	391	8	5	3	57	21	773
61	226	388	56	7	1	45	17	740
62	300	204	8	2	3	31	17	565
63	8	395	1	1	2	5	6	418
64	158	321	37	24	3	34	23	600
65	174	144	4	2	22	16	27	389
66	270	94	17	6	2	19	13	421
67	127	194	148	26	2	26	19	542
68	276	74	17	6	3	24	15	415
69	237	132	59	11	3	46	19	507

Contd....

## Polling Station Level Election Results

**Winner, Runner-up and 3rd Party Position & Winning Margin According to Polling Stations in Chenari Assembly in Assembly Election (AE) under Sasaram Parliamentary Constituency in Bihar (2015)**

Polling Station Number	Winner Party	Winner Votes (%)	Runner-up Party	Runner-up Votes (%)	Winning Margin Votes (%)	Third Party	Third Party Votes (%)	Other Votes (%)
70	BLSP	127 (48.66)	INC	99 (37.93)	28 (10.73)	BSP	10 (3.83)	25 (9.58)
71	BLSP	274 (48.75)	INC	179 (31.85)	95 (16.9)	BMUP	10 (1.78)	99 (17.62)
72	INC	271 (50.28)	BLSP	184 (34.14)	87 (16.14)	IND (AK)	10 (1.86)	74 (13.73)
73	BLSP	271 (50)	INC	164 (30.26)	107 (19.74)	IND (MB)	15 (2.77)	92 (16.97)
74	INC	131 (41.99)	BLSP	116 (37.18)	15 (4.81)	IND (AK)	24 (7.69)	41 (13.14)
75	INC	186 (57.76)	BLSP	93 (28.88)	93 (28.88)	BSP	10 (3.11)	33 (10.25)
76	INC	341 (41.03)	BLSP	300 (36.1)	41 (4.93)	BSP	41 (4.93)	149 (17.93)
77	INC	100 (43.67)	BLSP	74 (32.31)	26 (11.36)	IND (AK)	8 (3.49)	47 (20.52)
78	BLSP	274 (44.92)	INC	264 (43.28)	10 (1.64)	IND (AK)	10 (1.64)	62 (10.16)
79	BLSP	363 (43.58)	INC	324 (38.9)	39 (4.68)	IND (AK)	13 (1.56)	133 (15.97)
80	BLSP	469 (50.92)	INC	307 (33.33)	162 (17.59)	BMUP	13 (1.41)	132 (14.33)
81	BLSP	268 (84.54)	INC	31 (9.78)	237 (74.76)	IND (MB)	3 (0.95)	15 (4.73)
82	INC	291 (48.18)	BLSP	251 (41.56)	40 (6.62)	BSP	12 (1.99)	50 (8.28)
83	BLSP	268 (50.85)	INC	177 (33.59)	91 (17.26)	IND (AK)	37 (7.02)	45 (8.54)
84	BLSP	299 (48.54)	INC	235 (38.15)	64 (10.39)	IND (AK)	34 (5.52)	48 (7.79)
85	BLSP	466 (68.63)	INC	106 (15.61)	360 (53.02)	IND (AK)	17 (2.5)	90 (13.25)
86	BLSP	171 (52.29)	INC	76 (23.24)	95 (29.05)	IND (AK)	33 (10.09)	47 (14.37)
87	BLSP	234 (48.85)	INC	154 (32.15)	80 (16.7)	CPI(ML)(L)	28 (5.85)	63 (13.15)
88	INC	373 (75.66)	BLSP	89 (18.05)	284 (57.61)	BSP	7 (1.42)	24 (4.87)
89	INC	352 (63.65)	BLSP	140 (25.32)	212 (38.33)	IND (AK)	8 (1.45)	53 (9.58)
90	BLSP	332 (43.74)	INC	319 (42.03)	13 (1.71)	IND (AK)	10 (1.32)	98 (12.91)
91	BLSP	193 (53.17)	INC	127 (34.99)	66 (18.18)	RSWD	5 (1.38)	38 (10.47)
92	INC	272 (57.51)	BLSP	160 (33.83)	112 (23.68)	IND (AK)	6 (1.27)	35 (7.4)
93	BLSP	408 (49.94)	INC	359 (43.94)	49 (6)	SP	7 (0.86)	43 (5.26)
94	BLSP	283 (52.21)	INC	188 (34.69)	95 (17.52)	IND (AK)	9 (1.66)	62 (11.44)
95	INC	156 (53.61)	BLSP	115 (39.52)	41 (14.09)	SP	6 (2.06)	14 (4.81)
96	INC	453 (71.9)	BLSP	134 (21.27)	319 (50.63)	BSP	9 (1.43)	34 (5.4)
97	BLSP	287 (45.34)	BSP	134 (21.17)	153 (24.17)	INC	117 (18.48)	95 (15.01)
98	BLSP	279 (74.4)	INC	24 (6.4)	255 (68)	BSP	5 (1.33)	67 (17.87)
99	INC	204 (68)	BLSP	71 (23.67)	133 (44.33)	BSP	4 (1.33)	21 (7)
100	BLSP	182 (40.44)	INC	176 (39.11)	6 (1.33)	BSP	30 (6.67)	62 (13.78)
101	BLSP	351 (52.62)	INC	204 (30.58)	147 (22.04)	IND (MB)	42 (6.3)	70 (10.49)
102	BLSP	118 (48.36)	INC	72 (29.51)	46 (18.85)	SP	9 (3.69)	45 (18.44)
103	BLSP	347 (54.65)	INC	184 (28.98)	163 (25.67)	IND (AK)	11 (1.73)	93 (14.65)
104	BLSP	158 (41.8)	INC	141 (37.3)	17 (4.5)	SP	23 (6.08)	56 (14.81)

Contd....

## Socio-Economic Amenities - Rural

### Access to Education Facilities

Particulars	Number of Villages (% of Population)				
	Available	Not Available	If Not Available (Distance of Nearest Facility)		
			A	B	C
Govt. Primary School	182 (88)	127 (12)	2 (0)	125 (12)	0 (0)
Private Primary School	35 (22)	274 (78)	0 (0)	0 (0)	0 (0)
Govt. Middle School	76 (46)	233 (54)	11 (2)	98 (18)	41 (7)
Private Middle School	45 (32)	264 (68)	3 (0)	38 (9)	18 (3)
Govt. Secondary School	8 (6)	301 (94)	27 (8)	119 (33)	136 (42)
Private Secondary School	12 (7)	297 (93)	0 (0)	3 (2)	6 (4)
Govt. Senior Secondary School	8 (6)	301 (94)	27 (8)	119 (33)	136 (42)
Private Senior Secondary School	12 (7)	297 (93)	0 (0)	3 (2)	6 (4)
Govt. Arts and Science Degree College	0 (0)	309 (100)	0 (0)	20 (5)	203 (58)
Private Arts and Science Degree College	0 (0)	309 (100)	0 (0)	15 (6)	71 (32)
Govt. Engineering College	0 (0)	309 (100)	0 (0)	0 (0)	0 (0)
Private Engineering College	0 (0)	309 (100)	0 (0)	0 (0)	309 (100)
Govt. Medicine College	0 (0)	309 (100)	0 (0)	0 (0)	309 (100)
Private Medicine College	0 (0)	309 (100)	0 (0)	0 (0)	0 (0)
Govt. Management Institute	0 (0)	309 (100)	0 (0)	0 (0)	309 (100)
Private Management Institute	0 (0)	309 (100)	0 (0)	0 (0)	0 (0)
Govt. Polytechnic	0 (0)	309 (100)	0 (0)	0 (0)	309 (100)
Private Polytechnic	0 (0)	309 (100)	0 (0)	0 (0)	0 (0)
Govt. Vocational Training School/ITI	0 (0)	309 (100)	0 (0)	0 (0)	309 (100)
Private Vocational Training School/ITI	0 (0)	309 (100)	0 (0)	0 (0)	0 (0)
Govt. Non Formal Training Centre	0 (0)	309 (100)	0 (0)	0 (0)	309 (100)
Private Non Formal Training Centre	0 (0)	309 (100)	0 (0)	0 (0)	0 (0)
Govt. School For Disabled	0 (0)	309 (100)	0 (0)	0 (0)	309 (100)
Private School For Disabled	0 (0)	309 (100)	0 (0)	0 (0)	0 (0)
Government Others	0 (0)	309 (100)	0 (0)	0 (0)	309 (100)
Private Others	0 (0)	309 (100)	0 (0)	0 (0)	0 (0)

Note : Distance A : Less than 5 km; B : Between 5-10 km; C : 10+ km.; Source : Data Analysis is based on 2011 Census.

## DISCLAIMER

The Terms of Use and Disclaimer of Datanet India Private Limited (hereinafter referred to as "Datanet") for use of this analysis report of **Chenari Assembly Constituency (Chenari Vidhan Sabha)** :-

1. **Assembly Factbook™** is a Registered Trade Mark owned by Datanet.
2. All the maps are sketched and graphical representation only and have not been drawn to the scale and also not to represent the actual geographical area or boundary of the unit.
3. The data for the aforesaid analysis is based on authentic sources and has been culled from the various publications of Census, CSO and NSSO for district and block level data, various central and state government departments, Central & State Elections Commissions and the concerned Returning Officers' releases, Electoral Rolls, Election results and allied publications, internal assessment, surveys, estimates and analysis. Therefore, certain adjustment of data at micro level may have been done to arrive closer to the macro data.
4. Data have been provided on an "As Is" and "As AVAILABLE" basis
5. The colours shown in the maps or diagram and charts of a particular party, alliance or AC are indicative and do not represent them.
6. This publication which includes maps, sheets, graphs and data would be the property under copyright of Datanet only. The user may use these for its internal study, analysis and research purposes. It's public display, re-selling or any commercial uses by the user are not allowed.
7. Datanet has taken due care and caution in compilation and processing of data and allied information, but does not guarantee the accuracy, adequacy or completeness of any information/analysis and will be not responsible for any errors or omissions or for the results obtained from the use of such information/analysis.
8. All the contents for the publication have been culled from various authentic sources and Datanet reasonably believes such sources to be reliable, but does not make any representations, express or implied as to the accuracy or fitness of use of such information. The information or contents of the information/analysis do not constitute advice and should not be relied upon in making (or refraining from making) any decision. Any reliance placed upon the information provided by Datanet is the sole responsibility and strictly at the user's risk.
9. In no event will Datanet be liable for any damages (including, without limitation, damages for loss of business projects, or loss of profits) arising in contract, tort or otherwise from the use of or inability to use any of its contents, or from any action taken (or refrained from being taken) as a result of using the analysis or any of its contents. Datanet its directors, owners, editors, officials, employees, distributor and agents or any associate will not be liable for any errors in the information contained or any consequences arising from the use of the contents of the provided information/analysis.
10. If any provision of these terms and conditions is held invalid or illegal or unenforceable for any reason by any court of competent jurisdiction, such provision shall be severed and the remainder of provisions of the terms and conditions shall continue in full force and effect as if the Term of Use had been executed with the invalid, illegal or unenforceable provision eliminated.
11. If there are any discrepancies in the information provided, please bring it to attention of Datanet for suitable rectification measures.



**Buy Online This Complete Book At**  
**Datanet India eBooks Store**

[\*\*www.indiastatpublications.com\*\*](http://www.indiastatpublications.com)

**or go directly at**

[\*\*http://www.indiastatpublications.com/  
Assembly\\_factbook/Bihar/Sasaram/ Chenari\*\*](http://www.indiastatpublications.com/Assembly_factbook/Bihar/Sasaram/Chenari)

 **indiastat**elections

ISBN : 978-93-5313-067-1

