



Bihar

Assembly Factbook™

Katoria Assembly Constituency



Key Electoral Data of Katoria
Assembly Constituency (Vidhan Sabha)

Bihar

Assembly Factbook™

Katoria Assembly Constituency



Katoria Vidhan Sabha

Editor & Director

Dr. R.K. Thukral

Research Editor

Dr. Shafeeq Rahman

Compiled, Researched and Published by Datanet India Pvt. Ltd.

D-100, 1st Floor,

Okhla Industrial Area, Phase-I,
New Delhi- 110020.

Ph.: 91-11- 43580781-84

Email : support@indiastatpublications.com

Website : www.indiastatelections.com

Online Book Store :

www.indiastatpublications.com

Report No. : AFB/BR-162-0123

ISBN : 978-93-5301-846-7

First Edition : January, 2018

Sixth Updated Edition : January, 2023

Price : Rs. 11500/-

US\$ 310

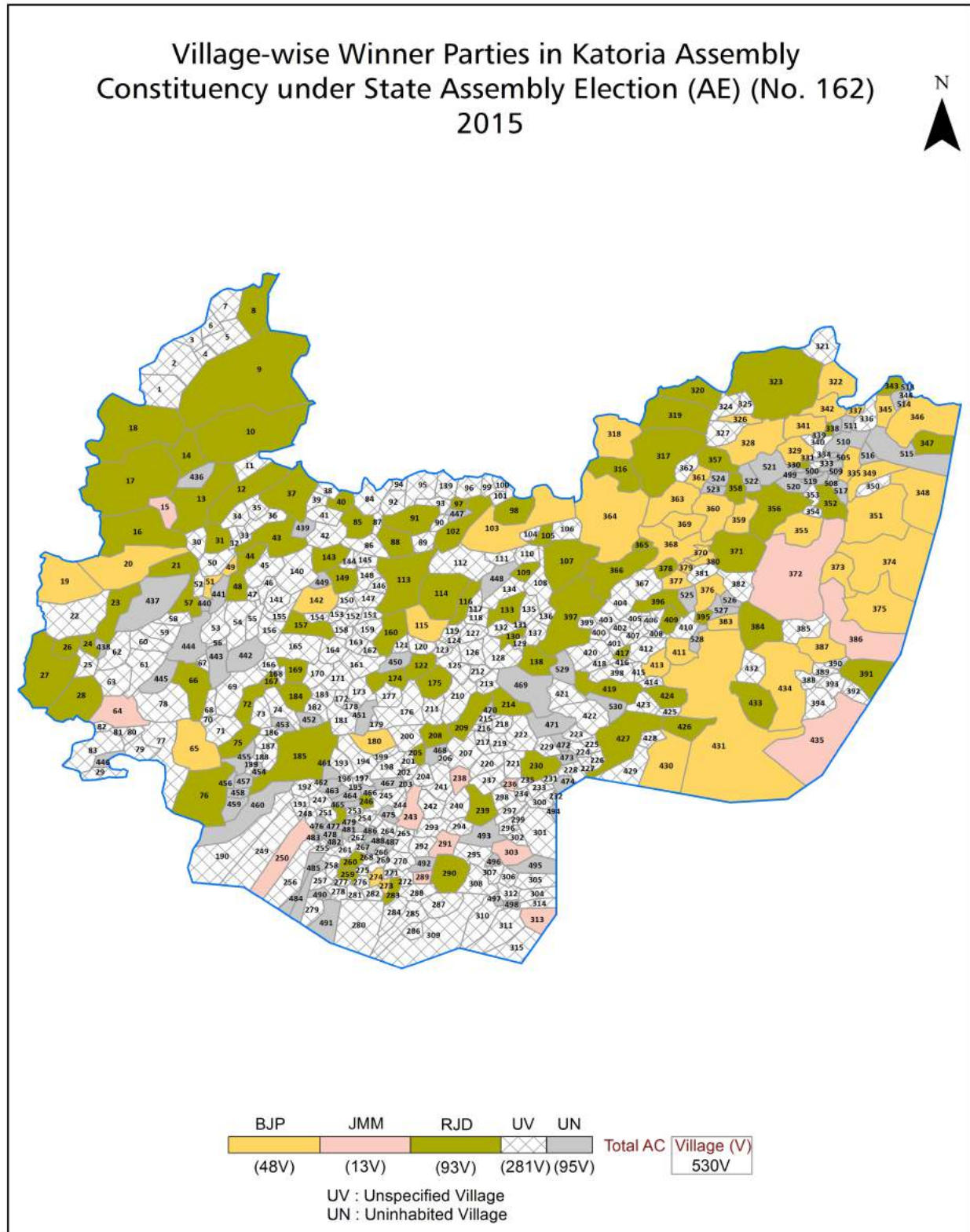
© Datanet India Pvt. Ltd.

All rights reserved. No part of this book may be reproduced, stored in a retrieval system or transmitted in any form or by any means, mechanical photocopying, photographing, scanning, recording or otherwise without the prior written permission of the publisher. Please refer to Disclaimer at page no. 243 for the use of this publication.

Printed in India

No.	Particulars	Page No.
	Introduction	
1	Assembly Constituency - (Vidhan Sabha) at a Glance Features of Assembly as per Delimitation Commission of India (2008)	1-2
	Location and Political Maps	
2	Location Map Boundaries of Assembly Constituency - (Vidhan Sabha) in District Boundaries of Assembly Constituency under Parliamentary Constituency - (Lok Sabha) Village-wise Winner Parties- 2020, 2019, 2015, 2014, 2010 and 2009	3-11
	Administrative Setup (2011)	
3	District Sub-district Towns Villages Inhabited Villages Uninhabited Villages Village Panchayat Intermediate Panchayat	12-34
	Demographics (2011)	
4	Population Households Rural/Urban Population Villages by Population Size Sex Ratio (Total & 0-6 Years) Religious Population Social Population Literacy Rate	35-36
	Electoral Features	
5	Important Dates of Last Elections Held Electors by Gender Service Electors Voters Voters Turnout Polling Stations & Average Number of Electors per Polling Station Electors by Age Group Present Elected Representatives	37-42
	Historical Summary Election Results	
6	Vote Share of Major Parties Winning Margin (Number & Percentage) Polarity of Parties Summary Result of Assembly Segment of Parliamentary Elections 2019, 2014, 2009, 2004 and 1999 Summary Result of Assembly Elections 2020, 2015, 2010, 2005 (Oct), 2005 (Feb), 2000, 1995, 1990, 1985, 1980, 1977, 1972, 1969, 1967, 1962 and 1957	43-67
	Polling Station Level Election Results	
7	Name and Number of Polling Station 2020, 2019, 2015, 2014, 2010 and 2009 Polling Station-wise Electors, Voters & Voters Turnout 2020, 2019, 2015, 2014, 2010 and 2009 Polling Station wise Elections Results 2020, 2019, 2015, 2014, 2010 and 2009	68-222
	Share of Assembly Constituency	
8	Share of Assembly Constituency - (Vidhan Sabha) in State, District and Parliamentary Constituency - (Lok Sabha)	223
	Socio-Economic Amenities (2011)	
9	Access to Administrative Units Agricultural, Manufacturing and Industrial Commodities Demographic Indicators Education Health & Manpower Drinking Water Supply Sanitation Entertainment and Recreations Infrastructure Power Food Allocation Distribution and Marketing of Agriculture Commodities Infrastructure Transport and Road Infrastructure Communication Banking and Financial Services Land Use Irrigation Source	225-239
10	Abbreviation & Sources	240-242
11	Disclaimer	243

Location & Political Map



Administrative Setup

List of Village Panchayat & Intermediate Panchayat (Block) Name - 2011

Village Name	Village Panchayat Name	Intermediate Panchayat Name
Amarbarhait	Kudro	Bausi
Angaro Jabra	Angaro Jabra	Bausi
Asanbani	Katiyari	Katoria
Asanha	Asanha	Bausi
Babhangawan	Babhangawan	Bausi
Bagaicha	Chilkara	Bausi
Bagduma	Bagduma	Bausi
Baghmari	Barbasni	Katoria
Baida chak	Dahua	Bausi
Barbasni	Barbasni	Katoria
Barham Pur	Bagduma	Bausi
Bausi	Kasba Mandar	Bausi
Belauni	Katoria	Katoria
Bena Mohanpur	Dahua	Bausi
Bhaga	Saruwa	Bausi
Bhairopur	Dewasi	Katoria
Bhalki	Sanpdahar	Bausi
Bhalki Tola Apia	Sanpdahar	Bausi
Bhalki Tola Baghwa	Sanpdahar	Bausi
Bhalki Tola Basleta	Sanpdahar	Bausi
Bhalki Tola Beltikri	Sanpdahar	Bausi
Bhalki Tola Bhalsungia	Sanpdahar	Bausi
Bhalki Tola Charghara	Sanpdahar	Bausi
Bhalki Tola Chuapani	Chilkara	Bausi
Bhalki Tola Chunakoti	Sanpdahar	Bausi
Bhalki Tola Chunakoti Arazi	Sanpdahar	Bausi
Bhalki Tola Doarwe	Sanpdahar	Bausi
Bhalki Tola Gogula	Sanpdahar	Bausi
Bhalki Tola Gorara	Sanpdahar	Bausi

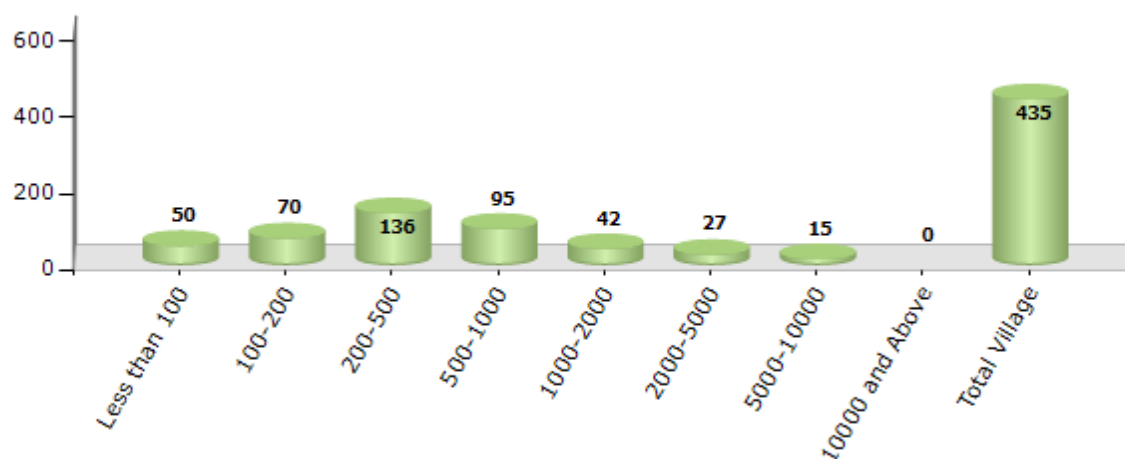
Contd....

Demographics

Number of Villages by Population Size - 2011

Less than 100	100-200	200-500	500-1000	1000-2000	2000-5000	5000-10000	10000 and Above	Total Village
50	70	136	95	42	27	15	0	435

Number of Villages by Population Size - 2011

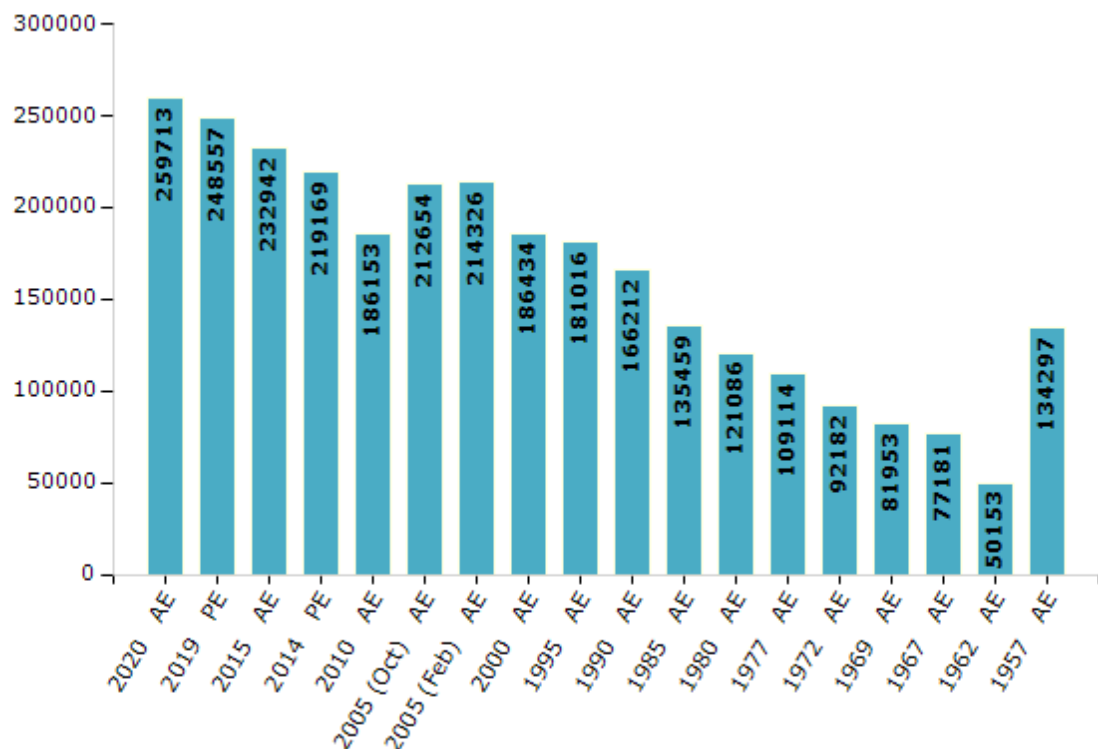


Electoral Features

Electors by Male & Female

Year	Male	Female	Others	Total	Year	Male	Female	Others	Total
2020 AE	137233	122480	0	259713	1995 AE	93775	87241	-	181016
2019 PE	131739	116818	0	248557	1990 AE	85563	80649	-	166212
2015 AE	124185	108754	3	232942	1985 AE	69690	65769	-	135459
2014 PE	116312	102855	2	219169	1980 AE	62663	58423	-	121086
2010 AE	99156	86997	0	186153	1977 AE	58924	50190	-	109114
2009 PE	-	-	-	-	1972 AE	46933	45249	-	92182
2005 (Oct) AE	112200	100454	-	212654	1969 AE	43551	38402	-	81953
2005 (Feb) AE	113110	101216	-	214326	1967 AE	-	-	-	77181
2004 PE	-	-	-	-	1962 AE	-	-	-	50153
2000 AE	97815	88619	-	186434	1957 AE	-	-	-	134297
1999 PE	-	-	-	-	1952 AE	-	-	-	-

Number of Electors



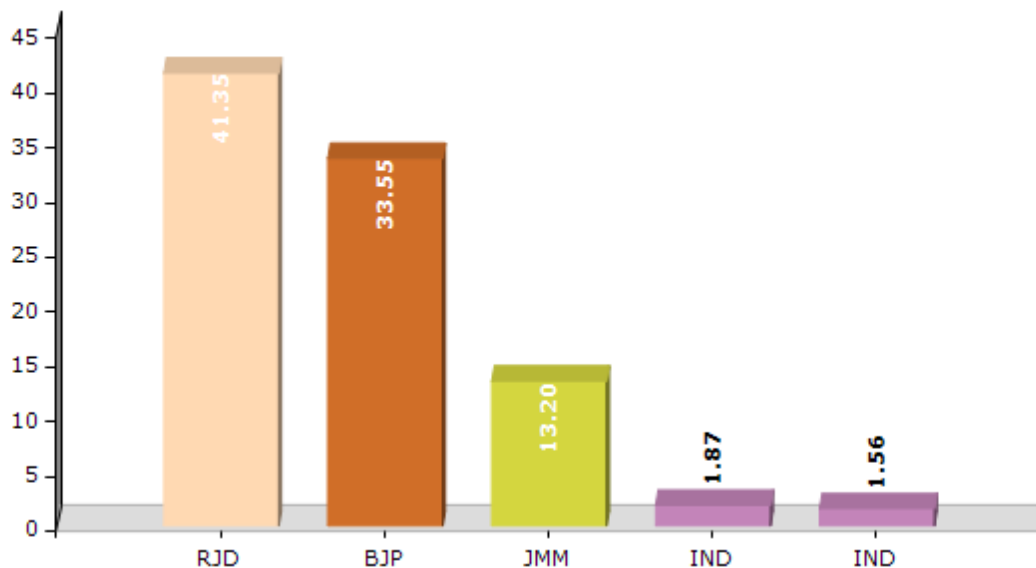
Note : AE : Assembly Election, PE : Assembly Segment of Parliamentary Election

Historical Summary Election Results

Summary Result of Assembly Election - 2015

Candidate Name	Party	Votes	Votes %
Sweety Sima Hembram	RJD	54760	41.35
Nikki Hembram	BJP	44423	33.55
Anjala Hansda	JMM	17481	13.2
Maikal Hasada	IND	2478	1.87
Umesh Hembram	IND	2064	1.56
Pushpalata Murmu	NCP	1926	1.45
Rekha Kumari Soren	IND	1673	1.26
Rajaram Soren	BVM	1364	1.03
Anil Kumar Marandi	GJDS	1324	1
	NOTA	4928	3.72

Votes Percentage of Top Parties - 2015



Polling Station Level Election Results

Number and Name of Polling Stations (PS) (2020)

Number of Polling Stations	Name of Polling Stations	Number of Polling Stations	Name of Polling Stations
1	Uttkarmit Madhya Vidyalay Budhvabathan Daya Bhag	19	Madhya Vidyalay Badvasani (Daya Bhag)
2	Uttkarmit Madhya Vidyalay Budhwabathan Baya Bhag	19A	Madhya Vidyalay Badvasani (Daya Bhag)
3	Uttkarmit Madhya Vidyalay Chananathara Daya Bhag	20	Madhya Vidyalay Badvasani (Baya Bhag)
3A	Uttkarmit Madhya Vidyalay Chananathara Daya Bhag	20A	Madhya Vidyalay Badvasani (Baya Bhag)
4	Prathamik Vidyalay Edra Esthith Mothabadi (Daya Bhag)	21	Prathamik Vidyalay Bhaluakura
5	Prathamik Vidyalay Edra Esthit Mothabadi (Baya Bhag)	22	Prathamik Vidyalay Baghmari
6	Prathamik Vidyalay Belachur (Daya Bhag)	23	Uttkarmit Madhya Vidyalay Ghagarijor,(Daya Bhag)
7	Prathamik Vidyalay Belchur (Baya Bhag)	23A	Uttkarmit Madhya Vidyalay Ghagarijor,(Daya Bhag)
8	Uttkarmit Madhya Vidyalay Ghumani Urdu (Daya Bhag)	24	Uttkarmit Madhya Vidyalay Ghagrijore (Baya Bhag)
9	Uttkarmit Madhya Vidyalay Ghumani Urdu (Baya Bhag)	24A	Uttkarmit Madhya Vidyalay Ghagrijore (Baya Bhag)
10	Prathamik Vidyalay Papreva	25	Uttkarmit Madhya Vidyalay Fulvariya Daya Bhag
10A	Prathamik Vidyalay Papreva	25A	Uttkarmit Madhya Vidyalay Fulvariya Daya Bhag
11	Prathamik Vidyalay Vehanga	26	Rajakiya Buniyadi Vidyalay Karjhousa(Baya Bhag)
12	Uttkarmit Madhya Vidyalay Sathiyari,	26A	Rajakiya Buniyadi Vidyalay Karjhousa(Baya Bhag)
13	Uttkarmit Madhya Vidyalay Hadahar	27	Rajkiya Buniyadi Vidyalay Karjhousa (Daya Bhag)
14	Prathamik Vidyalay Bhemiya	28	Uttkarmit Madhya Vidyalay Dhanvaran (Baya Bhag)
15	Uttkarmit Madhya Vidyalay Panjarpatta (Daya Wng)	29	Uttkarmit Madhya Vidyalay Dhanvaran (Daya Bhag)
16	Uttkarmit Madhya Vidyalay Panjarpatta (Baya Bhag)	29A	Uttkarmit Madhya Vidyalay Dhanvaran (Daya Bhag)
17	Prathamik Vidyalay Tindobha (Baya Bhag)	30	Prathamik Vidyalay Maniya (Daya Bhag)
17A	Prathamik Vidyalay Tindobha (Baya Bhag)	31	Prathamik Vidyalay Maniya (Baya Bhag)
18	Prathamik Vidyalay Tindobha (Daya Bhag)	32	Uttkarmit Madhya Vidyalay Rikhiya Rajdah (Daya Bhag)

Contd....

Polling Station Level Election Results

Polling Station-wise Votes Secured by Overall Top Five Parties in Katoria Assembly in Assembly Election (AE) under Banka Parliamentary Constituency in Bihar (2020)

Number of Polling Station	Winner - Dr. Nikki Hembrom (BJP)	Runner-up - Sweetie Sima Hembram (RJD)	3rd - Anjela Hansda (JMM)	4th - Roj Meri Kisku (JAPL)	5th - Etwari Tudu (APKSP)	NOTA	Other	Total Votes Secured
27	266	268	9	5	2	21	0	571
28	285	406	11	23	14	19	0	758
29	176	195	14	4	10	11	0	410
29A	68	194	6	2	4	21	0	295
30	38	549	10	12	3	6	0	618
31	161	361	10	14	6	15	0	567
32	100	426	14	15	10	18	0	583
33	130	352	16	15	12	42	0	567
34	309	61	9	5	4	18	0	406
34A	126	145	4	3	6	11	0	295
35	365	118	15	5	5	13	0	521
36	443	57	4	2	4	14	0	524
37	164	297	4	1	4	8	0	478
38	210	154	5	4	6	6	0	385
39	118	521	13	12	11	8	0	683
40	142	266	169	9	16	16	0	618
41	196	168	10	9	4	4	0	391
41A	69	138	6	7	4	13	0	237
42	127	361	20	18	5	27	0	558
42A	56	235	8	13	5	17	0	334
43	254	269	10	8	4	18	0	563
43A	151	151	2	4	2	8	0	318
44	237	324	21	18	7	25	0	632
45	230	295	36	15	6	21	0	603
46	231	283	13	9	6	9	0	551
46A	210	69	5	2	2	10	0	298
47	240	305	16	18	8	25	0	612
48	298	131	5	4	6	12	0	456
49	265	223	17	8	3	11	0	527
49A	106	118	4	5	2	8	0	243
50	485	135	11	8	5	24	0	668
51	194	397	25	16	14	26	0	672
52	209	133	5	7	5	19	0	378
52A	107	276	8	5	3	13	0	412
53	202	209	19	15	6	29	0	480

Contd....

Polling Station Level Election Results

Winner, Runner-up and 3rd Party Position & Winning Margin According to Polling Stations in Katoria Assembly in Assembly Election (AE) under Banka Parliamentary Constituency in Bihar (2020)

Polling Station Number	Winner Party	Winner Votes (%)	Runner-up Party	Runner-up Votes (%)	Winning Margin Votes (%)	Third Party	Third Party Votes (%)	Other Votes (%)
54	RJD	206 (47.14)	BJP	187 (42.79)	19 (4.35)	JAPL	10 (2.29)	34 (7.78)
54A	BJP	181 (57.64)	RJD	92 (29.3)	89 (28.34)	JAPL	9 (2.87)	32 (10.19)
55	RJD	287 (47.13)	BJP	243 (39.9)	44 (7.23)	JMM	18 (2.96)	61 (10.02)
55A	BJP	154 (50)	RJD	116 (37.66)	38 (12.34)	JAPL	11 (3.57)	27 (8.77)
56	BJP	226 (50.11)	RJD	178 (39.47)	48 (10.64)	JMM	17 (3.77)	30 (6.65)
57	BJP	352 (55.26)	RJD	242 (37.99)	110 (17.27)	JAPL	13 (2.04)	30 (4.71)
58	RJD	140 (47.95)	BJP	128 (43.84)	12 (4.11)	JAPL	7 (2.4)	17 (5.82)
58A	RJD	192 (67.13)	BJP	70 (24.48)	122 (42.65)	JAPL	6 (2.1)	18 (6.29)
59	BJP	255 (48.39)	RJD	226 (42.88)	29 (5.51)	JAPL	10 (1.9)	36 (6.83)
59A	RJD	171 (55.34)	BJP	106 (34.3)	65 (21.04)	JMM	9 (2.91)	23 (7.44)
60	BJP	216 (48.87)	RJD	202 (45.7)	14 (3.17)	JAPL	6 (1.36)	18 (4.07)
60A	BJP	176 (67.69)	RJD	73 (28.08)	103 (39.61)	JMM	1 (0.38)	10 (3.85)
61	BJP	255 (61.15)	RJD	128 (30.7)	127 (30.45)	JAPL	7 (1.68)	27 (6.47)
61A	BJP	147 (55.47)	RJD	98 (36.98)	49 (18.49)	JAPL	6 (2.26)	14 (5.28)
62	RJD	493 (84.27)	BJP	60 (10.26)	433 (74.01)	JMM	10 (1.71)	22 (3.76)
62A	RJD	252 (79.5)	BJP	47 (14.83)	205 (64.67)	JMM	7 (2.21)	11 (3.47)
63	BJP	404 (65.16)	RJD	132 (21.29)	272 (43.87)	JAPL	17 (2.74)	67 (10.81)
63A	BJP	244 (70.11)	RJD	66 (18.97)	178 (51.14)	APKSP	11 (3.16)	27 (7.76)
64	BJP	277 (70.84)	RJD	88 (22.51)	189 (48.33)	APKSP	6 (1.53)	20 (5.12)
65	BJP	346 (72.38)	RJD	103 (21.55)	243 (50.83)	JAPL	8 (1.67)	21 (4.39)
66	BJP	297 (69.23)	RJD	119 (27.74)	178 (41.49)	JAPL	4 (0.93)	9 (2.1)
67	BJP	330 (75)	RJD	93 (21.14)	237 (53.86)	JAPL	3 (0.68)	14 (3.18)
67A	BJP	148 (58.73)	RJD	84 (33.33)	64 (25.4)	JMM	4 (1.59)	16 (6.35)
68	BJP	367 (72.67)	RJD	110 (21.78)	257 (50.89)	JAPL	6 (1.19)	22 (4.36)
68A	BJP	181 (53.24)	RJD	127 (37.35)	54 (15.89)	JMM	10 (2.94)	22 (6.47)
69	BJP	330 (76.57)	RJD	67 (15.55)	263 (61.02)	APKSP	7 (1.62)	27 (6.26)
69A	BJP	172 (76.79)	RJD	44 (19.64)	128 (57.15)	JAPL	2 (0.89)	6 (2.68)
70	BJP	426 (84.19)	RJD	63 (12.45)	363 (71.74)	JAPL	3 (0.59)	14 (2.77)
71	BJP	331 (75.23)	RJD	64 (14.55)	267 (60.68)	APKSP	13 (2.95)	32 (7.27)
72	BJP	281 (46.45)	RJD	237 (39.17)	44 (7.28)	JAPL	21 (3.47)	66 (10.91)
72A	BJP	178 (65.68)	RJD	82 (30.26)	96 (35.42)	JMM	4 (1.48)	7 (2.58)
73	BJP	211 (55.38)	RJD	145 (38.06)	66 (17.32)	JAPL	9 (2.36)	16 (4.2)
73A	BJP	173 (78.28)	RJD	45 (20.36)	128 (57.92)	JMM	1 (0.45)	2 (0.9)
74	BJP	386 (60.79)	RJD	187 (29.45)	199 (31.34)	JAPL	13 (2.05)	49 (7.72)
75	RJD	391 (77.12)	BJP	87 (17.16)	304 (59.96)	JMM	17 (3.35)	12 (2.37)

Contd....

Socio-Economic Amenities - Rural

Access to Education Facilities

Particulars	Number of Villages (% of Population)				
	Available	Not Available	If Not Available (Distance of Nearest Facility)		
			A	B	C
Govt. Primary School	206 (83)	229 (17)	86 (6)	137 (11)	0 (0)
Private Primary School	4 (2)	431 (98)	0 (0)	5 (0)	0 (0)
Govt. Middle School	109 (59)	326 (41)	235 (30)	65 (7)	6 (1)
Private Middle School	5 (4)	430 (96)	7 (1)	8 (1)	2 (0)
Govt. Secondary School	11 (12)	424 (88)	8 (2)	251 (54)	163 (28)
Private Secondary School	3 (5)	432 (95)	0 (0)	1 (2)	0 (0)
Govt. Senior Secondary School	3 (3)	432 (97)	41 (10)	340 (76)	49 (9)
Private Senior Secondary School	2 (2)	433 (98)	0 (0)	0 (0)	0 (0)
Govt. Arts and Science Degree College	0 (0)	435 (100)	7 (7)	38 (22)	351 (66)
Private Arts and Science Degree College	1 (0)	434 (100)	1 (0)	2 (0)	35 (5)
Govt. Engineering College	0 (0)	435 (100)	0 (0)	0 (0)	0 (0)
Private Engineering College	0 (0)	435 (100)	0 (0)	0 (0)	435 (100)
Govt. Medicine College	0 (0)	435 (100)	0 (0)	0 (0)	435 (100)
Private Medicine College	0 (0)	435 (100)	0 (0)	0 (0)	0 (0)
Govt. Management Institute	0 (0)	435 (100)	0 (0)	0 (0)	435 (100)
Private Management Institute	0 (0)	435 (100)	0 (0)	0 (0)	0 (0)
Govt. Polytechnic	0 (0)	435 (100)	0 (0)	0 (0)	435 (100)
Private Polytechnic	0 (0)	435 (100)	0 (0)	0 (0)	0 (0)
Govt. Vocational Training School/ITI	0 (0)	435 (100)	0 (0)	0 (0)	435 (100)
Private Vocational Training School/ITI	0 (0)	435 (100)	0 (0)	0 (0)	0 (0)
Govt. Non Formal Training Centre	13 (2)	422 (98)	0 (0)	0 (0)	421 (98)
Private Non Formal Training Centre	1 (0)	434 (100)	0 (0)	0 (0)	0 (0)
Govt. School For Disabled	0 (0)	435 (100)	0 (0)	0 (0)	435 (100)
Private School For Disabled	0 (0)	435 (100)	0 (0)	0 (0)	0 (0)
Government Others	0 (0)	435 (100)	0 (0)	0 (0)	435 (100)
Private Others	0 (0)	435 (100)	0 (0)	0 (0)	0 (0)

Note : Distance A : Less than 5 km; B : Between 5-10 km; C : 10+ km.; Source : Data Analysis is based on 2011 Census.

DISCLAIMER

The Terms of Use and Disclaimer of Datanet India Private Limited (hereinafter referred to as "Datanet") for use of this analysis report of **Katoria Assembly Constituency (Katoria Vidhan Sabha)** :-

1. **Assembly Factbook™** is a Registered Trade Mark owned by Datanet.
2. All the maps are sketched and graphical representation only and have not been drawn to the scale and also not to represent the actual geographical area or boundary of the unit.
3. The data for the aforesaid analysis is based on authentic sources and has been culled from the various publications of Census, CSO and NSSO for district and block level data, various central and state government departments, Central & State Elections Commissions and the concerned Returning Officers' releases, Electoral Rolls, Election results and allied publications, internal assessment, surveys, estimates and analysis. Therefore, certain adjustment of data at micro level may have been done to arrive closer to the macro data.
4. Data have been provided on an "As Is" and "As AVAILABLE" basis
5. The colours shown in the maps or diagram and charts of a particular party, alliance or AC are indicative and do not represent them.
6. This publication which includes maps, sheets, graphs and data would be the property under copyright of Datanet only. The user may use these for its internal study, analysis and research purposes. It's public display, re-selling or any commercial uses by the user are not allowed.
7. Datanet has taken due care and caution in compilation and processing of data and allied information, but does not guarantee the accuracy, adequacy or completeness of any information/analysis and will be not responsible for any errors or omissions or for the results obtained from the use of such information/analysis.
8. All the contents for the publication have been culled from various authentic sources and Datanet reasonably believes such sources to be reliable, but does not make any representations, express or implied as to the accuracy or fitness of use of such information. The information or contents of the information/analysis do not constitute advice and should not be relied upon in making (or refraining from making) any decision. Any reliance placed upon the information provided by Datanet is the sole responsibility and strictly at the user's risk.
9. In no event will Datanet be liable for any damages (including, without limitation, damages for loss of business projects, or loss of profits) arising in contract, tort or otherwise from the use of or inability to use any of its contents, or from any action taken (or refrained from being taken) as a result of using the analysis or any of its contents. Datanet its directors, owners, editors, officials, employees, distributor and agents or any associate will not be liable for any errors in the information contained or any consequences arising from the use of the contents of the provided information/analysis.
10. If any provision of these terms and conditions is held invalid or illegal or unenforceable for any reason by any court of competent jurisdiction, such provision shall be severed and the remainder of provisions of the terms and conditions shall continue in full force and effect as if the Term of Use had been executed with the invalid, illegal or unenforceable provision eliminated.
11. If there are any discrepancies in the information provided, please bring it to attention of Datanet for suitable rectification measures.

Buy Online This Complete Book At
Datanet India eBooks Store

www.indiastatpublications.com

or go directly at

[http://www.indiastatpublications.com/
Assembly_factbook/Bihar/Banka/ Katoria](http://www.indiastatpublications.com/Assembly_factbook/Bihar/Banka/Katoria)

 **indiastat**elections

ISBN : 978-93-5301-846-7



9 789353 018467