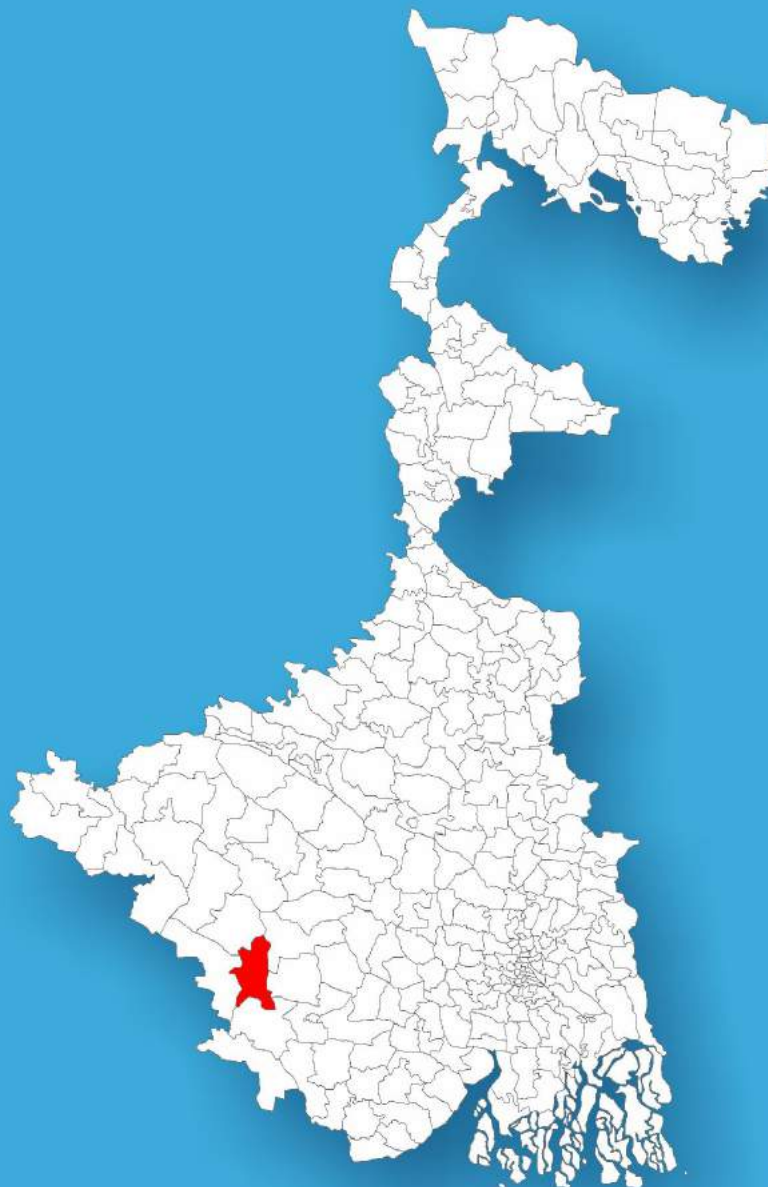




West Bengal

Assembly Factbook™

Jhargram Assembly Constituency



Key Electoral Data of Jhargram
Assembly Constituency (Vidhan Sabha)

West Bengal
Assembly FactbookTM
Jhargram Assembly Constituency



Jhargram Vidhan Sabha

Editor & Director

Dr. R.K. Thukral

Research Editor

Dr. Shafeeq Rahman

**Compiled, Researched and Published by
Datanet India Pvt. Ltd.**

D-100, 1st Floor,

Okhla Industrial Area, Phase-I,
New Delhi- 110020.

Ph.: 91-11- 43580781-84

Email : support@indiastatpublications.com

Website : www.indiastatelections.com

Online Book Store :

www.indiastatpublications.com

Report No. : AFB/WB-222-0123

ISBN : 978-93-5293-685-4

First Edition : January, 2018

Sixth Updated Edition : January, 2023

Price : Rs. 11500/-

US\$ 310

© Datanet India Pvt. Ltd.

All rights reserved. No part of this book may be reproduced, stored in a retrieval system or transmitted in any form or by any means, mechanical photocopying, photographing, scanning, recording or otherwise without the prior written permission of the publisher. Please refer to Disclaimer at page no. 198 for the use of this publication.

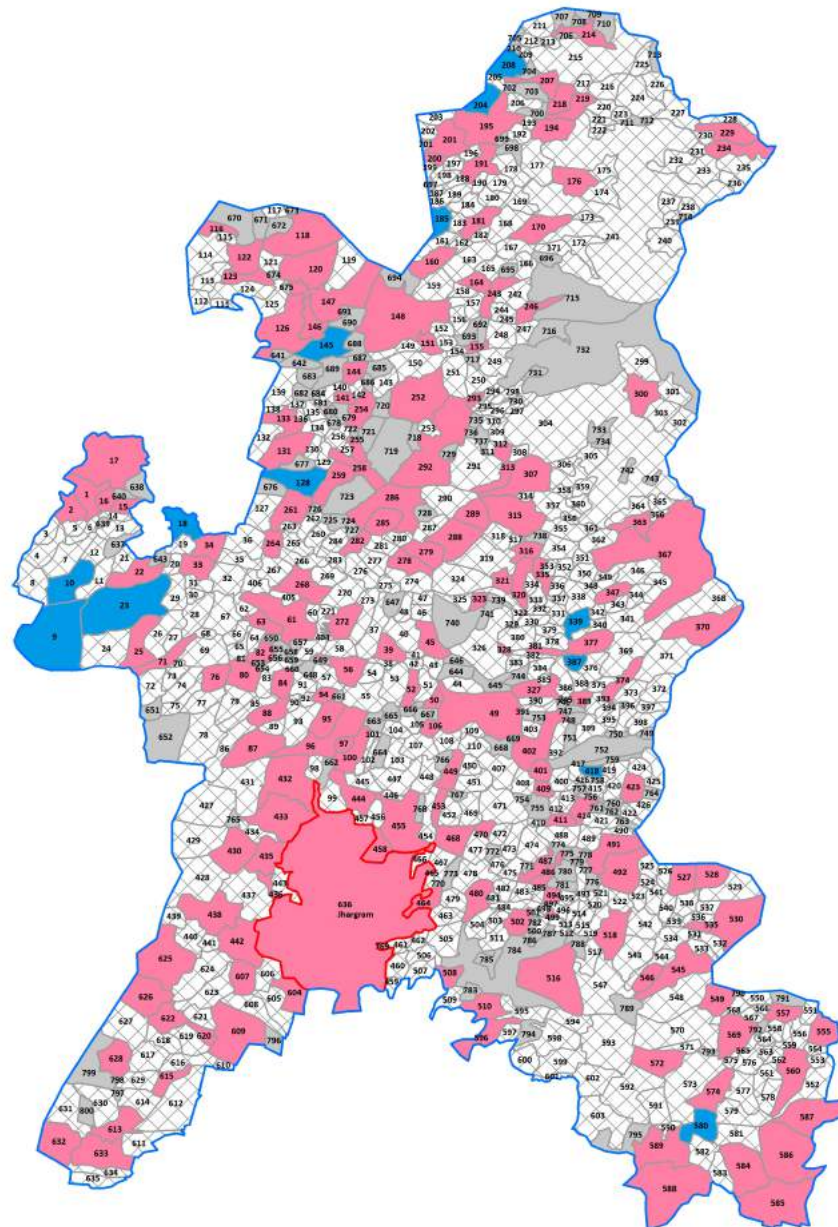
Printed in India

Contents

No.	Particulars	Page No.
	Introduction	
1	Assembly Constituency - (Vidhan Sabha) at a Glance Features of Assembly as per Delimitation Commission of India (2008)	1-2
	Location and Political Maps	
2	Location Map Boundaries of Assembly Constituency - (Vidhan Sabha) in District Boundaries of Assembly Constituency under Parliamentary Constituency - (Lok Sabha) Town & Village-wise Winner Parties- 2021, 2019, 2016, 2014, 2011 and 2009	3-10
	Administrative Setup (2011)	
3	District Sub-district Towns Villages Inhabited Villages Uninhabited Villages Village Panchayat Intermediate Panchayat	11-42
	Demographics (2011)	
4	Population Households Rural/Urban Population Towns and Villages by Population Size Sex Ratio (Total & 0-6 Years) Religious Population Social Population Literacy Rate	43-44
	Electoral Features	
5	Important Dates of Last Elections Held Electors by Gender Service Electors Voters Voters Turnout Polling Stations & Average Number of Electors per Polling Station Electors by Age Group Present Elected Representatives	45-50
	Historical Summary Election Results	
6	Vote Share of Major Parties Winning Margin (Number & Percentage) Polarity of Parties Summary Result of Assembly Segment of Parliamentary Elections 2019, 2014, 2009, 2004 and 1999 Summary Result of Assembly Elections 2021, 2016, 2011, 2006, 2001, 1996, 1991, 1987, 1982, 1977, 1972, 1971, 1969, 1967, 1962, 1957 and 1952	51-76
	Polling Station Level Election Results	
7	Name and Number of Polling Station 2021, 2019, 2016, 2014, 2011 and 2009 Polling Station-wise Electors, Voters & Voters Turnout 2021, 2019, 2016, 2014, 2011 and 2009 Polling Station wise Elections Results 2021, 2019, 2016, 2014, 2011 and 2009	77-179
	Share of Assembly Constituency	
8	Share of Assembly Constituency - (Vidhan Sabha) in State, District and Parliamentary Constituency - (Lok Sabha)	180
	Socio-Economic Amenities (2011)	
9	Access to Administrative Units Agricultural, Manufacturing and Industrial Commodities Demographic Indicators Education Health & Manpower Drinking Water Supply Sanitation Entertainment and Recreations Infrastructure Power Food Allocation Distribution and Marketing of Agriculture Commodities Infrastructure Transport and Road Infrastructure Communication Banking and Financial Services Land Use Irrigation Source	182-195
10	Abbreviation & Sources	196-197
11	Disclaimer	198

Location & Political Map

Town & Village-wise Winner Parties in Jhargram Assembly Constituency under State Assembly Election (AE) (No. 222) 2016



AITC	JKP(N)	UV	UN	Total AC	Town (T)	Village (V)
(1T+166V)	(13V)	(456V)	(164V)	1T	799V	
UV : Unspecified Village				UN : Uninhabited Village		

Administrative Setup

List of Village Panchayat & Intermediate Panchayat (Block) Name - 2011

Village Name	Village Panchayat Name	Intermediate Panchayat Name
Agaisol	Baita	Binpur - I
Agaya	Belatikri	Binpur - I
Ajna Shuli	Dharampur	Binpur - I
Akana	Nepura	Binpur - I
Akhrasol	Manikpara	Jhargram
Alamdanga	Ramgarh	Binpur - I
Amainagar	Andharia	Binpur - I
Amdiha	Bandhgora	Jhargram
Amdiha	Manikpara	Jhargram
Amjhuki	Bandhgora	Jhargram
Amkala	Belatikri	Binpur - I
Amlabani	Andharia	Binpur - I
Amlajora	Belatikri	Binpur - I
Amlia	Lalgarh	Binpur - I
Amrulia	Bandhgora	Jhargram
Anandapur	Andharia	Binpur - I
Andharia	Andharia	Binpur - I
Andharjora	Baita	Binpur - I
Angarkundia	Bandhgora	Jhargram
Angarkuria	Manikpara	Jhargram
Ankro	Binpur	Binpur - I
Antapati	Bandhgora	Jhargram
Antapati	Bandhgora	Jhargram
Arjun Dahar	Radhanagar	Jhargram
Arma	Ramgarh	Binpur - I
Asanbani	Sijua	Binpur - I
Asanbani	Bandhgora	Jhargram
Ashanbani	Nepura	Binpur - I
Ashanbani	Belatikri	Binpur - I

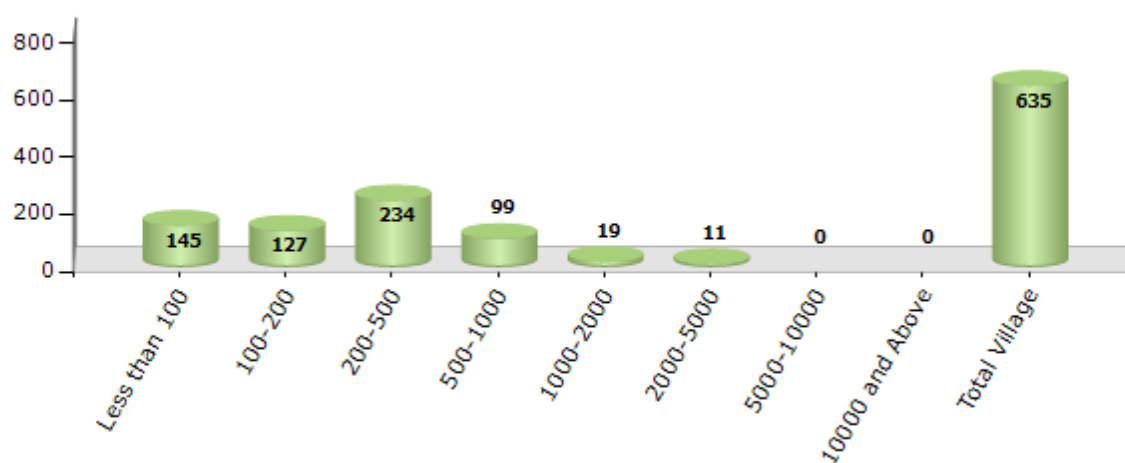
Contd....

Demographics

Number of Villages by Population Size - 2011

Less than 100	100-200	200-500	500-1000	1000-2000	2000-5000	5000-10000	10000 and Above	Total Village
145	127	234	99	19	11	0	0	635

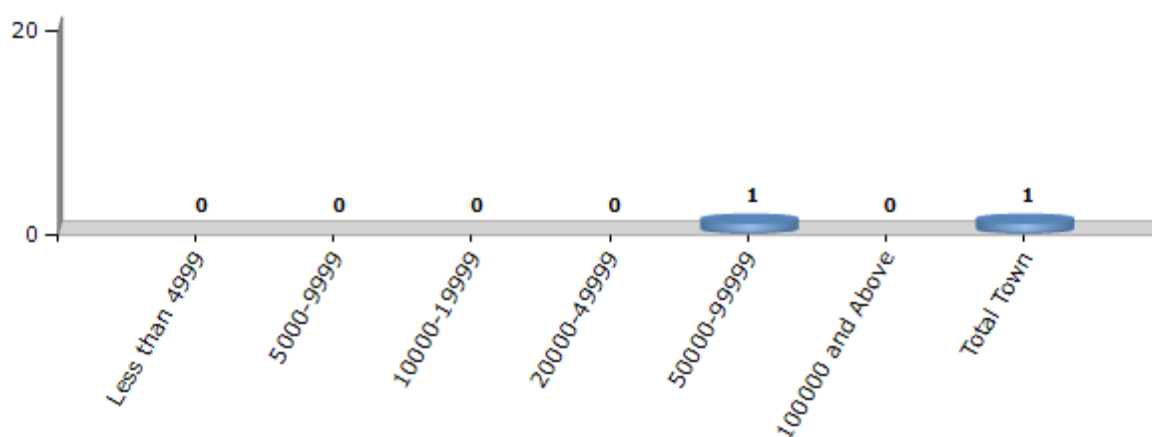
Number of Villages by Population Size - 2011



Number of Towns by Population Size - 2011

Less than 4999	5000-9999	10000-19999	20000-49999	50000-99999	100000 and Above	Total Town
0	0	0	0	1	0	1

Number of Towns by Population Size - 2011

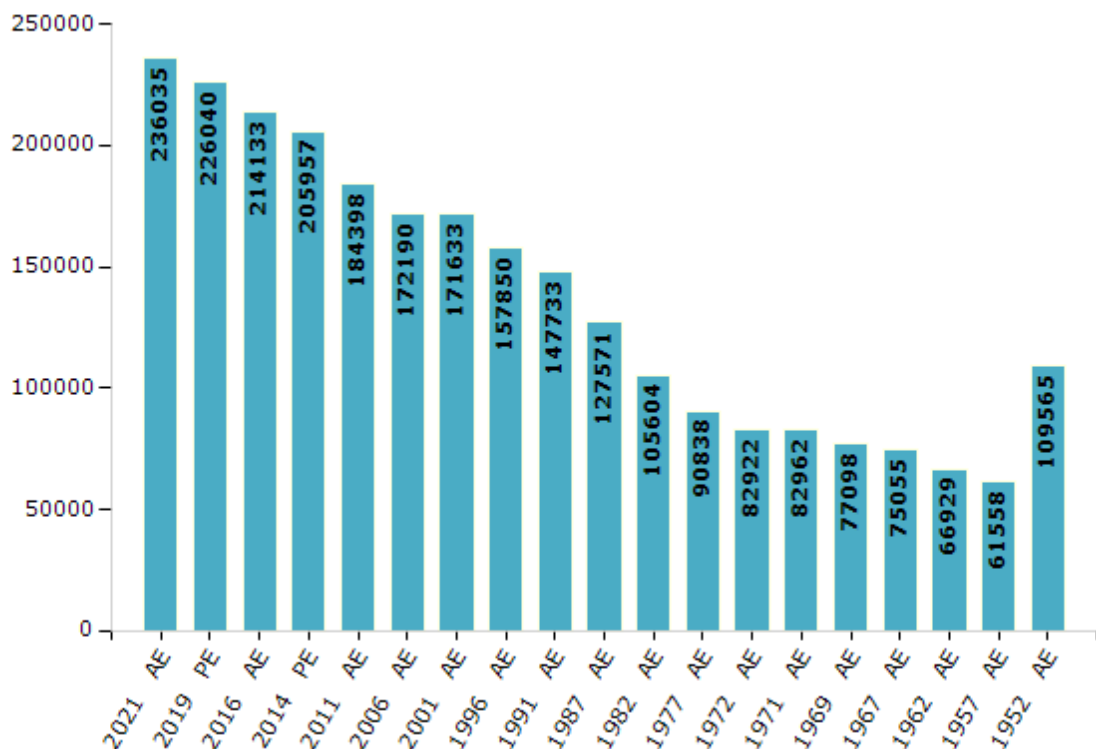


Electoral Features

Electors by Male & Female

Year	Male	Female	Others	Total	Year	Male	Female	Others	Total
2021 AE	117623	118401	11	236035	1991 AE	76149	71584	-	147733
2019 PE	112933	113099	8	226040	1987 AE	63669	63902	-	127571
2016 AE	107667	106465	1	214133	1982 AE	53226	52378	-	105604
2014 PE	104363	101593	1	205957	1977 AE	45893	44945	-	90838
2011 AE	94246	90152	0	184398	1972 AE	48359	34563	-	82922
2009 PE	-	-	-	-	1971 AE	47501	35461	-	82962
2006 AE	87039	85151	-	172190	1969 AE	39823	37275	-	77098
2004 PE	-	-	-	-	1967 AE	-	-	-	75055
2001 AE	86248	85385	-	171633	1962 AE	-	-	-	66929
1999 PE	-	-	-	-	1957 AE	-	-	-	61558
1996 AE	80404	77446	-	157850	1952 AE	-	-	-	109565

Number of Electors



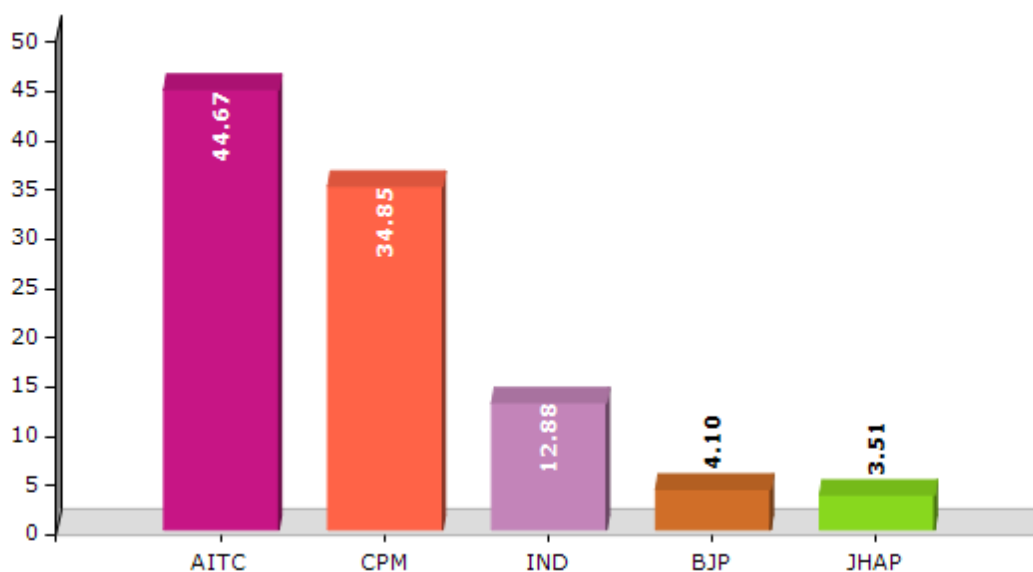
Note : AE : Assembly Election, PE : Assembly Segment of Parliamentary Election

Historical Summary Election Results

Summary Result of Assembly Election - 2011

Candidate Name	Party	Votes	Votes %
Sukumar Hansda	AITC	69464	44.67
Amar Basu	CPM	54191	34.85
Chhatradhar Mahata	IND	20037	12.88
Bijay Mahato	BJP	6376	4.1
Bholanath Mahata	JHAP	5452	3.51

Votes Percentage of Top Parties - 2011



Polling Station Level Election Results

Number and Name of Polling Stations (PS) (2016)

Number of Polling Stations	Name of Polling Stations	Number of Polling Stations	Name of Polling Stations
1	Kui Prathamik Bidyalay	22	Dhamro Sishushiksha Kendra
2	Kui Prathamik Bidyalay	23	Guyabagan Prathamik Bidyalay
3	Binpur High School	24	Belatikri Prathamik Vidyalay
4	Binpur High School	25	Belatikri Prathamik Vidyalay
5	Binpur Special Prathamik Vidyalay	26	Gopalpur Primary School
6	Binpur Special Prathamik Vidyalay	27	Barajamda Primary Vidyalay
7	Nayagram Primary School	28	Nera Prathamik Vidyalay
8	Nayagram Primary School	29	Gopinathpur Prathamik Vidyalay
9	Golashuli Prathamik Bidyalay	30	Gopinathpur Prathamik Vidyalay
10	Champabani Primary School	31	Sutpipul Prathamik Vidyalay
11	Magura Primary School	32	Moulara Primary School(North)
12	Ankro Primary School	33	Moulara Primary School(North)
13	Jashpur Special Primary School	34	Khosaguri Prathamik Vidyalay
14	Bhursa Prathamik Vidyalay	35	Guri Prathamik Vidyalay
15	Bhetli Prathamik Vidyalay	36	Tentulara Primary School
16	Bhetli Prathamik Vidyalay	37	Laghata Prathamik Bidyalay
17	Murabani Netaji Junior High School	38	Shyamsundarpur Prathamik Vidyalay
18	Rasikpur Prathamik Vidyalay	39	Papatapur Prathamik Bidyalay
19	Chhoto Shyamnagar Prathamik Vidyalay	40	Nishchintapur Madhyamik Siksha Kendra
20	Chandrapur Primary School	41	Nischintapur Prathamik Vidyalaya
21	Chandrapur Primary School	42	Rangua Prathamik Vidyalay

Contd....

Polling Station Level Election Results

Polling Station-wise Votes Secured by Overall Top Five Parties in Jhargram Assembly in Assembly Election (AE) under Jhargram Parliamentary Constituency in West Bengal (2016)

Number of Polling Station	Winner - Sukumar Hansda (AITC)	Runner-up - Chunibala Hansda (JKP(N))	3rd - Ajoy Kumar Sen (BJP)	4th - Subrata Bhattacharya (INC)	5th - Mahadeb Pratihari (SUCI)	NOTA	Other	Total Votes Secured
36	488	221	31	7	1	12	19	779
37	192	358	22	7	4	6	12	601
38	272	112	74	23	4	11	10	506
39	491	225	88	16	9	3	8	840
40	395	156	44	8	2	14	15	634
41	438	155	98	6	7	18	13	735
42	253	178	86	6	7	25	18	573
43	475	214	75	16	9	8	21	818
44	512	230	40	26	6	6	17	837
45	294	97	22	5	3	9	14	444
46	275	283	37	18	6	7	8	634
47	556	138	48	22	9	22	21	816
48	253	226	24	6	5	5	5	524
49	385	282	34	7	3	6	7	724
50	415	227	126	22	3	13	16	822
51	329	344	86	9	5	8	12	793
52	303	429	73	15	6	9	19	854
53	392	203	63	6	5	2	4	675
54	401	218	29	10	4	16	10	688
55	531	245	99	22	2	14	12	925
56	467	354	45	23	5	12	15	921
57	308	323	70	17	9	11	14	752
58	438	201	60	24	5	12	15	755
59	586	207	113	34	15	25	35	1015
60	286	201	59	8	16	17	11	598
61	314	70	89	15	4	41	17	550
62	394	188	71	8	7	19	9	696
63	432	283	91	13	10	44	20	893
64	394	233	90	21	10	24	31	803
65	327	331	39	12	12	14	17	752
66	349	209	57	25	8	26	12	686
67	268	189	56	16	8	26	14	577
68	331	179	49	25	11	17	16	628
69	644	188	71	28	14	52	38	1035
70	403	209	40	19	10	17	15	713

Contd....

Polling Station Level Election Results

Winner, Runner-up and 3rd Party Position & Winning Margin According to Polling Stations in Jhargram Assembly in Assembly Election (AE) under Jhargram Parliamentary Constituency in West Bengal (2016)

Polling Station Number	Winner Party	Winner Votes (%)	Runner-up Party	Runner-up Votes (%)	Winning Margin Votes (%)	Third Party	Third Party Votes (%)	Other Votes (%)
75	AITC	506 (60.45)	JKP(N)	205 (24.49)	301 (35.96)	BJP	52 (6.21)	74 (8.84)
76	AITC	622 (79.85)	JKP(N)	47 (6.03)	575 (73.82)	BJP	45 (5.78)	65 (8.34)
77	AITC	516 (53.09)	JKP(N)	247 (25.41)	269 (27.68)	BJP	99 (10.19)	110 (11.32)
78	AITC	325 (45.01)	JKP(N)	246 (34.07)	79 (10.94)	BJP	75 (10.39)	76 (10.53)
79	AITC	547 (54.59)	JKP(N)	240 (23.95)	307 (30.64)	BJP	89 (8.88)	126 (12.57)
80	AITC	458 (55.92)	JKP(N)	201 (24.54)	257 (31.38)	BJP	64 (7.81)	96 (11.72)
81	AITC	250 (51.12)	JKP(N)	131 (26.79)	119 (24.33)	BJP	66 (13.5)	42 (8.59)
82	AITC	237 (67.52)	JKP(N)	45 (12.82)	192 (54.7)	INC	31 (8.83)	38 (10.83)
83	AITC	548 (67.99)	JKP(N)	94 (11.66)	454 (56.33)	BJP	69 (8.56)	95 (11.79)
84	AITC	398 (49.81)	JKP(N)	259 (32.42)	139 (17.39)	BJP	47 (5.88)	95 (11.89)
85	AITC	422 (68.17)	JKP(N)	98 (15.83)	324 (52.34)	BJP	40 (6.46)	59 (9.53)
86	AITC	521 (58.47)	JKP(N)	185 (20.76)	336 (37.71)	BJP	71 (7.97)	114 (12.79)
87	AITC	322 (52.53)	JKP(N)	207 (33.77)	115 (18.76)	BJP	40 (6.53)	44 (7.18)
88	JKP(N)	391 (47.98)	AITC	316 (38.77)	75 (9.21)	BJP	51 (6.26)	57 (6.99)
89	AITC	287 (45.63)	JKP(N)	287 (45.63)	0 (0)	BJP	25 (3.97)	30 (4.77)
90	JKP(N)	339 (49.85)	AITC	269 (39.56)	70 (10.29)	BJP	40 (5.88)	32 (4.71)
91	AITC	599 (57.54)	JKP(N)	274 (26.32)	325 (31.22)	BJP	88 (8.45)	80 (7.68)
92	AITC	608 (72.21)	JKP(N)	88 (10.45)	520 (61.76)	BJP	67 (7.96)	79 (9.38)
93	AITC	416 (53.06)	JKP(N)	206 (26.28)	210 (26.78)	BJP	57 (7.27)	105 (13.39)
94	AITC	347 (60.14)	JKP(N)	110 (19.06)	237 (41.08)	BJP	50 (8.67)	70 (12.13)
95	AITC	382 (45.8)	JKP(N)	313 (37.53)	69 (8.27)	BJP	40 (4.8)	99 (11.87)
96	AITC	295 (55.35)	JKP(N)	184 (34.52)	111 (20.83)	BJP	29 (5.44)	25 (4.69)
97	AITC	536 (48.29)	JKP(N)	327 (29.46)	209 (18.83)	BJP	118 (10.63)	129 (11.62)
98	AITC	349 (42.25)	JKP(N)	252 (30.51)	97 (11.74)	BJP	147 (17.8)	78 (9.44)
99	AITC	433 (80.48)	BJP	45 (8.36)	388 (72.12)	JKP(N)	35 (6.51)	25 (4.65)
100	AITC	403 (75.33)	BJP	65 (12.15)	338 (63.18)	JKP(N)	32 (5.98)	35 (6.54)
101	AITC	478 (49.59)	JKP(N)	247 (25.62)	231 (23.97)	BJP	125 (12.97)	114 (11.83)
102	AITC	287 (75.13)	BJP	48 (12.57)	239 (62.56)	JKP(N)	17 (4.45)	30 (7.85)
103	AITC	371 (61.53)	JKP(N)	95 (15.75)	276 (45.78)	BJP	66 (10.95)	71 (11.77)
104	AITC	265 (57.86)	JKP(N)	78 (17.03)	187 (40.83)	BJP	53 (11.57)	62 (13.54)
105	AITC	311 (53.62)	BJP	144 (24.83)	167 (28.79)	JKP(N)	58 (10)	67 (11.55)
106	AITC	322 (53.67)	JKP(N)	173 (28.83)	149 (24.84)	BJP	71 (11.83)	34 (5.67)
107	AITC	488 (47.94)	JKP(N)	276 (27.11)	212 (20.83)	BJP	164 (16.11)	90 (8.84)
108	AITC	430 (65.45)	JKP(N)	103 (15.68)	327 (49.77)	BJP	69 (10.5)	55 (8.37)
109	AITC	532 (63.71)	BJP	163 (19.52)	369 (44.19)	JKP(N)	48 (5.75)	92 (11.02)
110	AITC	550 (66.43)	JKP(N)	90 (10.87)	460 (55.56)	BJP	88 (10.63)	100 (12.08)
111	AITC	407 (55.07)	JKP(N)	153 (20.7)	254 (34.37)	BJP	80 (10.83)	99 (13.4)

Contd....

Socio-Economic Amenities - Rural

Access to Education Facilities

Particulars	Number of Villages (% of Population)				
	Available	Not Available	If Not Available (Distance of Nearest Facility)		
			A	B	C
Govt. Primary School	336 (75)	299 (25)	0 (0)	0 (0)	0 (0)
Private Primary School	9 (3)	626 (97)	0 (0)	0 (0)	0 (0)
Govt. Middle School	59 (23)	576 (77)	421 (56)	67 (11)	15 (2)
Private Middle School	2 (0)	633 (100)	5 (0)	1 (0)	0 (0)
Govt. Secondary School	24 (13)	611 (87)	399 (58)	161 (24)	1 (0)
Private Secondary School	0 (0)	635 (100)	1 (0)	0 (0)	0 (0)
Govt. Senior Secondary School	13 (10)	622 (90)	271 (42)	281 (38)	11 (3)
Private Senior Secondary School	0 (0)	635 (100)	1 (0)	1 (0)	0 (0)
Govt. Arts and Science Degree College	0 (0)	635 (100)	43 (9)	148 (24)	388 (58)
Private Arts and Science Degree College	0 (0)	635 (100)	3 (0)	0 (0)	0 (0)
Govt. Engineering College	0 (0)	635 (100)	5 (1)	24 (4)	491 (76)
Private Engineering College	1 (0)	634 (100)	0 (0)	0 (0)	3 (0)
Govt. Medicine College	0 (0)	635 (100)	0 (0)	8 (1)	496 (77)
Private Medicine College	0 (0)	635 (100)	0 (0)	7 (2)	13 (2)
Govt. Management Institute	1 (0)	634 (100)	2 (0)	9 (1)	300 (48)
Private Management Institute	0 (0)	635 (100)	0 (0)	1 (0)	89 (17)
Govt. Polytechnic	0 (0)	635 (100)	32 (6)	97 (15)	443 (69)
Private Polytechnic	1 (0)	634 (100)	0 (0)	0 (0)	5 (1)
Govt. Vocational Training School/ITI	1 (1)	634 (99)	46 (7)	109 (15)	412 (67)
Private Vocational Training School/ITI	0 (0)	635 (100)	2 (0)	3 (0)	3 (1)
Govt. Non Formal Training Centre	1 (0)	634 (100)	39 (5)	65 (13)	186 (27)
Private Non Formal Training Centre	1 (2)	634 (98)	11 (3)	48 (6)	33 (6)
Govt. School For Disabled	0 (0)	635 (100)	21 (5)	64 (10)	219 (37)
Private School For Disabled	0 (0)	635 (100)	13 (2)	26 (3)	48 (8)
Government Others	2 (0)	633 (100)	0 (0)	0 (0)	0 (0)
Private Others	0 (0)	635 (100)	0 (0)	0 (0)	0 (0)

Note : Distance A : Less than 5 km; B : Between 5-10 km; C : 10+ km.; Source : Data Analysis is based on 2011 Census.

DISCLAIMER

The Terms of Use and Disclaimer of Datanet India Private Limited (hereinafter referred to as "Datanet") for use of this analysis report of **Jhargram Assembly Constituency (Jhargram Vidhan Sabha)** :-

1. **Assembly Factbook™** is a Registered Trade Mark owned by Datanet.
2. All the maps are sketched and graphical representation only and have not been drawn to the scale and also not to represent the actual geographical area or boundary of the unit.
3. The data for the aforesaid analysis is based on authentic sources and has been culled from the various publications of Census, CSO and NSSO for district and block level data, various central and state government departments, Central & State Elections Commissions and the concerned Returning Officers' releases, Electoral Rolls, Election results and allied publications, internal assessment, surveys, estimates and analysis. Therefore, certain adjustment of data at micro level may have been done to arrive closer to the macro data.
4. Data have been provided on an "As Is" and "As AVAILABLE" basis
5. The colours shown in the maps or diagram and charts of a particular party, alliance or AC are indicative and do not represent them.
6. This publication which includes maps, sheets, graphs and data would be the property under copyright of Datanet only. The user may use these for its internal study, analysis and research purposes. It's public display, re-selling or any commercial uses by the user are not allowed.
7. Datanet has taken due care and caution in compilation and processing of data and allied information, but does not guarantee the accuracy, adequacy or completeness of any information/analysis and will be not responsible for any errors or omissions or for the results obtained from the use of such information/analysis.
8. All the contents for the publication have been culled from various authentic sources and Datanet reasonably believes such sources to be reliable, but does not make any representations, express or implied as to the accuracy or fitness of use of such information. The information or contents of the information/analysis do not constitute advice and should not be relied upon in making (or refraining from making) any decision. Any reliance placed upon the information provided by Datanet is the sole responsibility and strictly at the user's risk.
9. In no event will Datanet be liable for any damages (including, without limitation, damages for loss of business projects, or loss of profits) arising in contract, tort or otherwise from the use of or inability to use any of its contents, or from any action taken (or refrained from being taken) as a result of using the analysis or any of its contents. Datanet its directors, owners, editors, officials, employees, distributor and agents or any associate will not be liable for any errors in the information contained or any consequences arising from the use of the contents of the provided information/analysis.
10. If any provision of these terms and conditions is held invalid or illegal or unenforceable for any reason by any court of competent jurisdiction, such provision shall be severed and the remainder of provisions of the terms and conditions shall continue in full force and effect as if the Term of Use had been executed with the invalid, illegal or unenforceable provision eliminated.
11. If there are any discrepancies in the information provided, please bring it to attention of Datanet for suitable rectification measures.

Buy Online This Complete Book At
Datanet India eBooks Store

www.indiastatpublications.com

or go directly at

[http://www.indiastatpublications.com/
Assembly_factbook/West_Bengal/Jhargram/ Jhargram](http://www.indiastatpublications.com/Assembly_factbook/West_Bengal/Jhargram/Jhargram)

 **indiastat**elections

ISBN : 978-93-5293-685-4

