



Telangana

Assembly Factbook™

Khanapur Assembly Constituency



Key Electoral Data of Khanapur
Assembly Constituency (Vidhan Sabha)

Telangana

Assembly Factbook™

Khanapur Assembly Constituency



Khanapur Vidhan Sabha

Editor & Director

Dr. R.K. Thukral

Research Editor

Dr. Shafeeq Rahman

Compiled, Researched and Published by Datanet India Pvt. Ltd.

D-100, 1st Floor,

Okhla Industrial Area, Phase-I,
New Delhi- 110020.

Ph.: 91-11- 43580781-84

Email : support@indiastatpublications.com

Website : www.indiastatelections.com

Online Book Store :

www.indiastatpublications.com

Report No. : AFB/TS-006-0123

ISBN : 978-93-5293-086-9

First Edition : January, 2018

Sixth Updated Edition : January, 2023

Price : Rs. 11500/-

US\$ 310

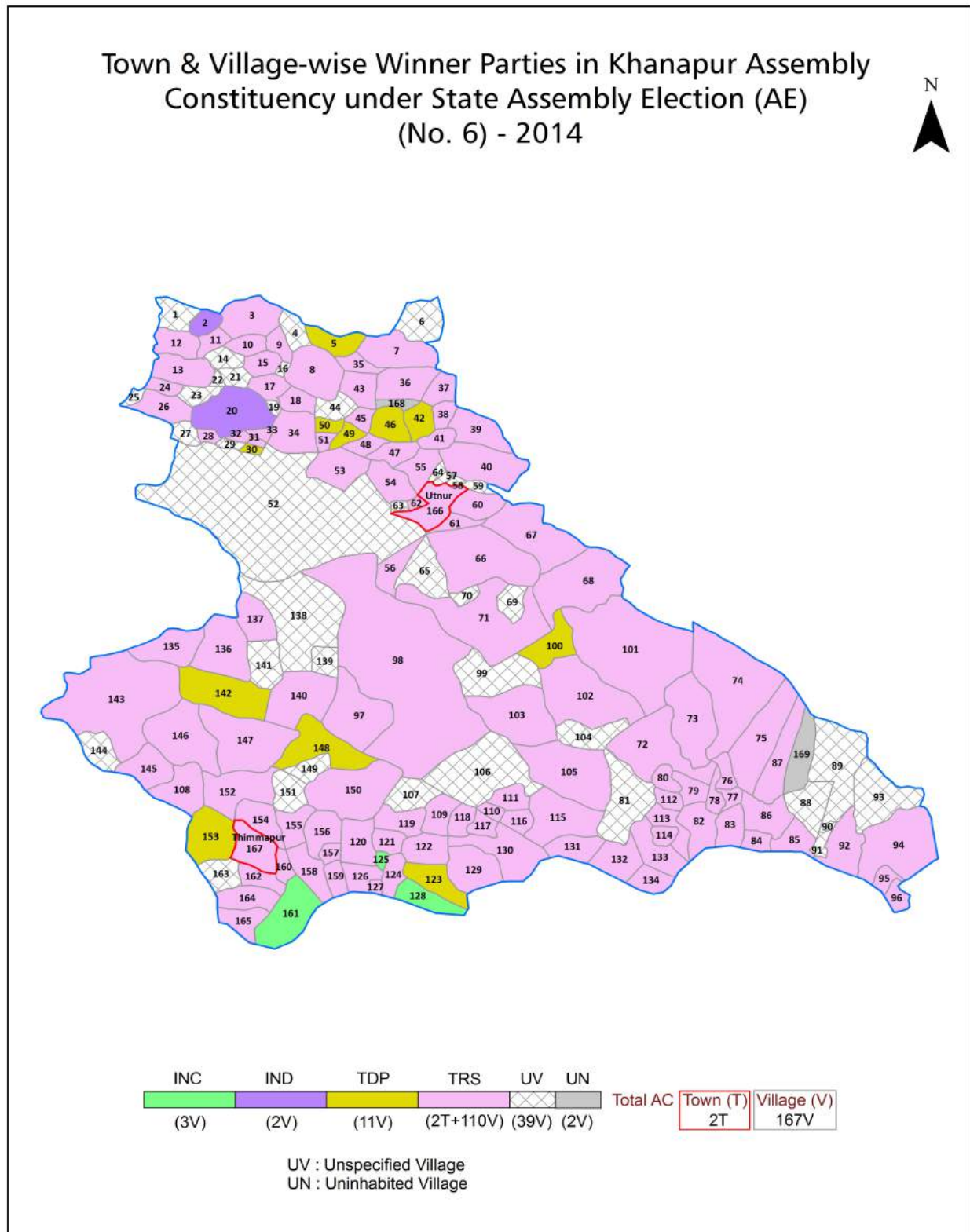
© Datanet India Pvt. Ltd.

All rights reserved. No part of this book may be reproduced, stored in a retrieval system or transmitted in any form or by any means, mechanical photocopying, photographing, scanning, recording or otherwise without the prior written permission of the publisher. Please refer to Disclaimer at page no. 212 for the use of this publication.

Printed in India

No.	Particulars	Page No.
	Introduction	
1	Assembly Constituency - (Vidhan Sabha) at a Glance Features of Assembly as per Delimitation Commission of India (2008)	1-2
	Location and Political Maps	
2	Location Map Boundaries of Assembly Constituency - (Vidhan Sabha) in District Boundaries of Assembly Constituency under Parliamentary Constituency - (Lok Sabha) Town & Village-wise Winner Parties- 2019-PE, 2018-AE, 2014-PE, 2014-AE, 2009-PE and 2009-AE	3-11
	Administrative Setup (2011)	
3	District Sub-district Towns Villages Inhabited Villages Uninhabited Villages Village Panchayat Intermediate Panchayat	12-20
	Demographics (2011)	
4	Population Households Rural/Urban Population Towns and Villages by Population Size Sex Ratio (Total & 0-6 Years) Religious Population Social Population Literacy Rate	21-22
	Electoral Features	
5	Important Dates of Last Elections Held Electors by Gender Service Electors Voters Voters Turnout Polling Stations & Average Number of Electors per Polling Station Electors by Age Group Present Elected Representatives	23-28
	Historical Summary Election Results	
6	Vote Share of Major Parties Winning Margin (Number & Percentage) Polarity of Parties Summary Result of Assembly Segment of Parliamentary Election 2019, 2014, 2009, 2004 and 1999 Summary Result of Assembly Elections 2018, 2014, 2009, 2004, 1999, 1994, 1989, 1985, 1983 and 1978	29-47
	Polling Station Level Election Results	
7	Name and Number of Polling Station 2019-PE, 2018-AE, 2014-PE, 2014-AE, 2009-PE and 2009-AE Polling Station-wise Electors, Voters & Voters Turnout 2019-PE, 2018-AE, 2014-PE, 2014-AE, 2009-PE and 2009-AE Polling Station wise Elections Results 2019-PE, 2018-AE, 2014-PE, 2014-AE, 2009-PE and 2009-AE	48-192
	Share of Assembly Constituency	
8	Share of Assembly Constituency - (Vidhan Sabha) in State, District and Parliamentary Constituency - (Lok Sabha)	193
	Socio-Economic Amenities (2011)	
9	Access to Administrative Units Agricultural, Manufacturing and Industrial Commodities Demographic Indicators Education Health & Manpower Drinking Water Supply Sanitation Entertainment and Recreations Infrastructure Power Food Allocation Distribution and Marketing of Agriculture Commodities Infrastructure Transport and Road Infrastructure Communication Banking and Financial Services Land Use Irrigation Source	195-209
10	Abbreviation & Sources	210-211
11	Disclaimer	212

Location & Political Map



Administrative Setup

List of Village Panchayat & Intermediate Panchayat (Block) Name - 2011

Village Name	Village Panchayat Name	Intermediate Panchayat Name
Advisarangapur	Sathnapalle	Khanapur
Allampally	Allampally	Kaddam (Peddur)
Ambaripet	Ambaripet	Kaddam (Peddur)
Andholi	Pulimadugu	Utnoor
Anji	Indervelly (B)	Inderavelly
Badampalle	Badampalle	Jannaram
Badankurthy	Badankurthy	Khanapur
Balampur	Birsaipet	Utnoor
Bavapur (K)	Bavapur (K)	Khanapur
Beernandi	Beernandi	Khanapur
Bellal	Bellal	Kaddam (Peddur)
Bevapur (R)	Rajura	Khanapur
Bhupet	Birsaipet	Utnoor
Bhuthkur	Bhuthkur	Kaddam (Peddur)
Bhuttapur	Bhuttapur	Kaddam (Peddur)
Birsaipet	Birsaipet	Utnoor
Bommena	Malyal	Jannaram
Bursanpatar	Indervelly (B)	Inderavelly
Burugpalle	Venkampochampad	Khanapur
Chamanpalle	Ervachintha	Khanapur
Chandur	Chandur	Utnoor
Chennur	Bhuttapur	Kaddam (Peddur)
Chintaguda	Chintaguda & Rotiguda	Jannaram
Chintakarra	Pulimadgu	Utnoor
Chittial	Chittial	Kaddam (Peddur)
Danthanpalle	Danthanpalle	Utnoor
Dasnapur	Dasnapur	Inderavelly
Dasturabad	Dasturabad	Kaddam (Peddur)
Devapur	Devapur	Inderavelly

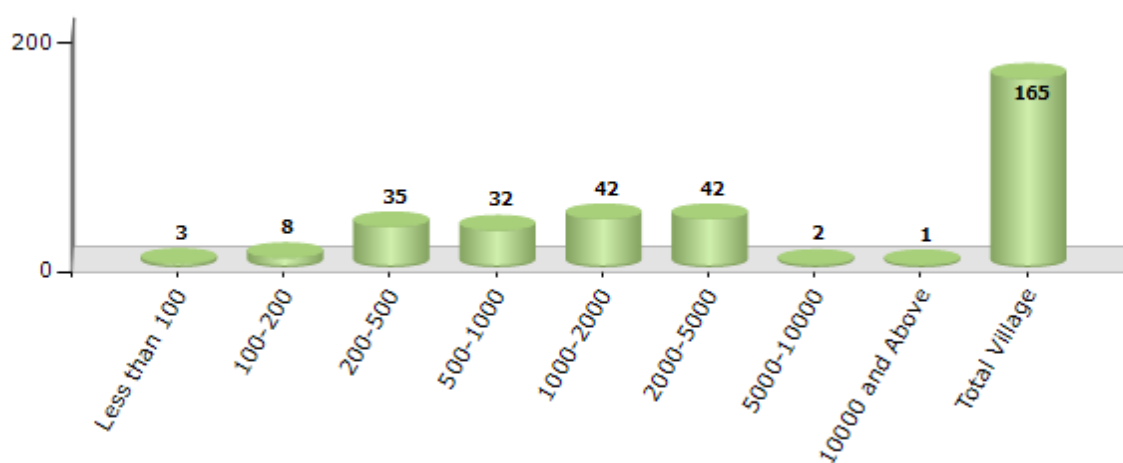
Contd....

Demographics

Number of Villages by Population Size - 2011

Less than 100	100-200	200-500	500-1000	1000-2000	2000-5000	5000-10000	10000 and Above	Total Village
3	8	35	32	42	42	2	1	165

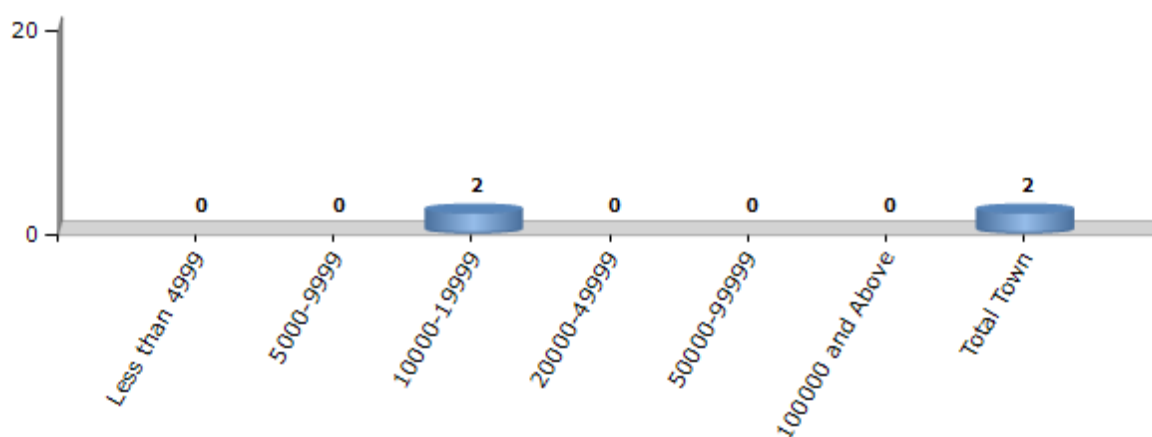
Number of Villages by Population Size - 2011



Number of Towns by Population Size - 2011

Less than 4999	5000-9999	10000-19999	20000-49999	50000-99999	100000 and Above	Total Town
0	0	2	0	0	0	2

Number of Towns by Population Size - 2011

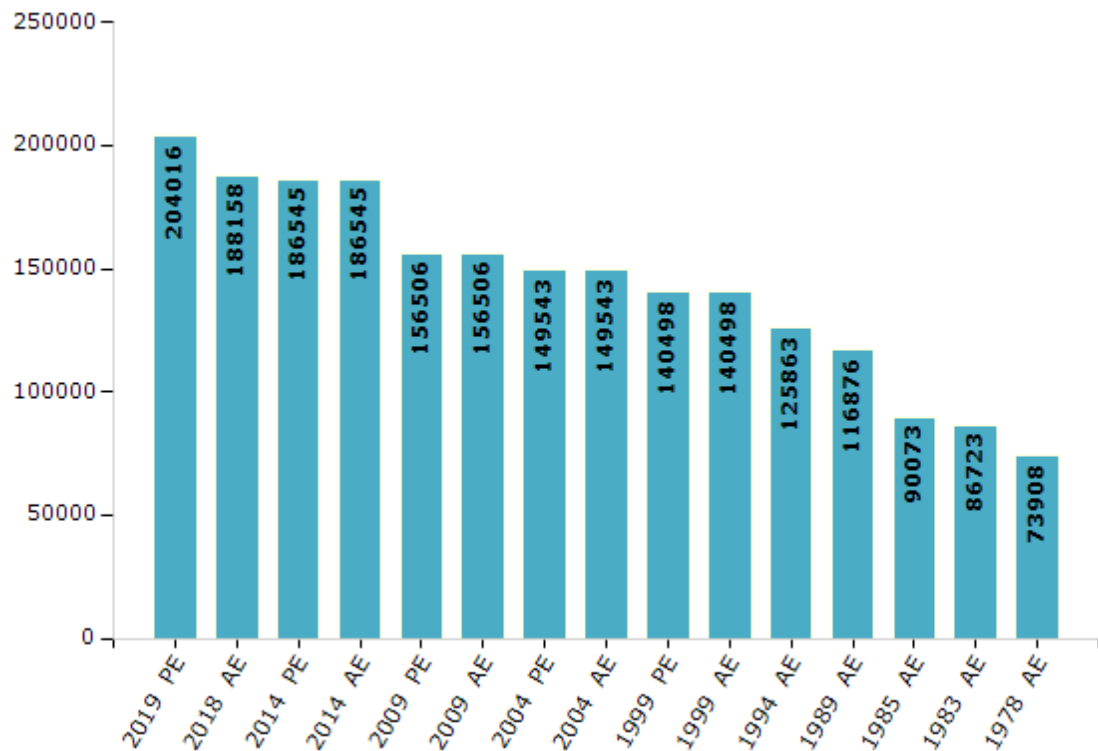


Electoral Features

Electors by Male & Female

Year	Male	Female	Others	Total	Year	Male	Female	Others	Total
2019 PE	100256	103749	11	204016	1994 AE	62494	63369	-	125863
2018 AE	93188	94944	26	188158	1989 AE	58503	58373	-	116876
2014 PE	92385	94142	18	186545	1985 AE	44316	45757	-	90073
2014 AE	92385	94142	18	186545	1983 AE	42432	44291	-	86723
2009 PE	75916	80590	-	156506	1978 AE	36395	37513	-	73908
2009 AE	75916	80590	-	156506	1972 AE	-	-	-	-
2004 PE	72960	76583	-	149543	1967 AE	-	-	-	-
2004 AE	72960	76583	-	149543	1962 AE	-	-	-	-
1999 PE	69126	71372	-	140498	1957 AE	-	-	-	-
1999 AE	69126	71372	-	140498	1955 AE	-	-	-	-

Number of Electors

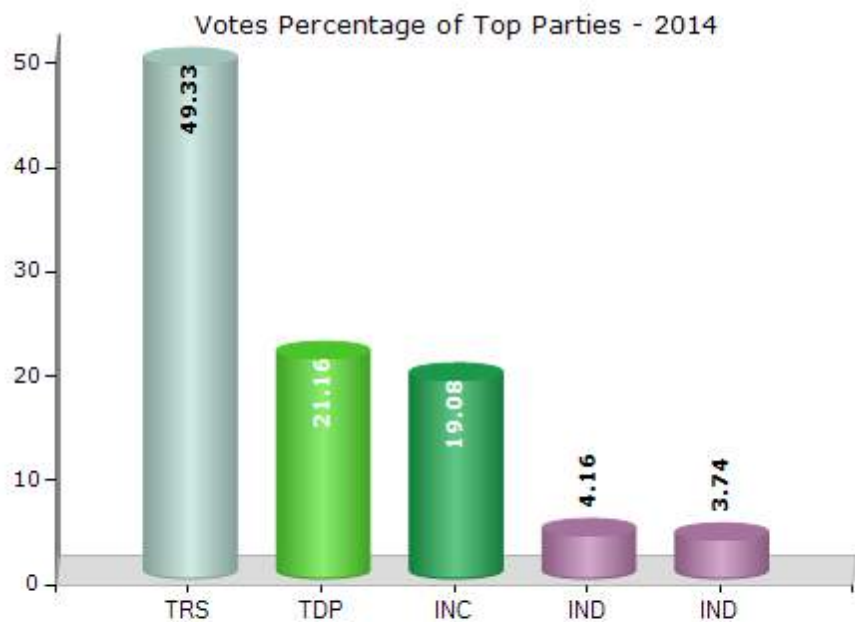


Note : AE : Assembly Election, PE : Assembly Segment of Parliamentary Election

Historical Summary Election Results

Summary Result of Assembly Election - 2014

Candidate Name	Party	Votes	Votes %
Ajmeera Rekha	TRS	67442	49.33
Rathod Ritesh	TDP	28931	21.16
Ajmeera Hari Naik	INC	26087	19.08
Jadhav Bhojya Naik	IND	5692	4.16
Mesram Anand Rao	IND	5107	3.74
Banoth Bheelsingh Naik	RLD	1031	0.75
	NOTA	2427	1.78



Polling Station Level Election Results

Number and Name of Polling Stations (PS) (2018 AE)

Number of Polling Stations	Name of Polling Stations	Number of Polling Stations	Name of Polling Stations
1	Upper Primary School,Ponkal	22	Mandal Prishad Primary School,Bursanpatar
2	Mandal Parishat Primary School, Shankerguda	23	Mandal Parishadh Primary School,Harkapur
3	Zilla Parishad Secondary School,Dhanora-B	24	Mandal Parishad Primary School,Anji
4	Zilla Parishad Secondary School,Dhanora-B	25	Govt. Ashram High School,Vadgaon
5	Mandal Parishad Upper Primary School,Gourapur	26	Mpps Kothapet, Valgonda Heerapur
6	Gram Panchayat Office,Tejapur	27	Mpps Kothapet, Walognda Heerapur
7	Mandal Parishadh Primary School,Rampur-B	28	Mandal Parishadh Upper Primary School,Pochampalli
8	Mandal Parishat Upper Primary School, Emayikunta	29	Tribal Welfare Ashram High School (Boys),Rimma H/O Pochampalli
9	Mandal Parishat Upper Primary School, Emayikunta	30	Mandal Parishad Upper Primary School,Dhasnapur
10	Mandal Parishad Upper Primary School Building,Ginneara	31	Ashram High School, Pittabongaram H/O Dasnapur
11	Govt., Tribal Welfare Primary School Dodanda, Bikku Tanda	32	Tribal Welfer Primary School,Vaipet
12	Mandal Parishat Primary School Building,Muthnoor, Mutnoor	33	Tribal Welfare Primary School,Fakeernaik Thanda
13	T.W.Ashram High School (Girls),Keslapur	34	Tribal Welfare Primary School,Lachimpur - B
14	Mandal Parishath Primary School, Dongargaon	35	Mandala Parishadh Primary School,Sakera-B
15	Tribel Welfer Primary School,Dodanda	36	Mandal Parishad Primary School,Andholi,Andholi
16	Zilla Parishad Secondary School, Indravelly B	37	Mandal Parishad Primary School,Chintakara
17	Mandal Prishad Primary School,Harijan Wada Indervelly	38	Mandal Parishad Upper Primary School,Pulimadugu
18	Gram Panchayat Office New Building, Indervelly,Indervally Ward No. .4,5,	39	Mandal Parishadh Primary Schoo L,Salewada-B
19	Gram Panchayat Office New Building, Indervelly,Indervally Ward No. .4,5,	40	Mandal Parishad Upper Primary School,Salewada-K
20	Zilla Parishad Secondary School, Indravelly B	41	Mandal Parishad Upper Primary School,Tandra
21	Zilla Parishad Secondary School, Indervelly-B	42	Tribel Welfer Primary School, Koperghad

Contd....

Polling Station Level Election Results

Polling Station-wise Votes Secured by Overall Top Five Parties in Khanapur Assembly in Assembly Election (AE) under Adilabad Parliamentary Constituency in Telangana (2018)

Number of Polling Station	Winner - Ajmera Rekha (TRS)	Runner-up - Ramesh Rathod (INC)	3rd - Ashok Satla (BJP)	4th - Ajmeera Hari Naik (BSP)	5th - Thatra Bheem Rao (TJS)	NOTA	Other	Total Votes Secured
36	184	28	10	0	1	4	5	232
37	13	0	272	2	1	11	21	320
38	149	446	21	7	3	6	9	641
39	125	55	263	14	89	16	35	597
40	310	212	107	16	5	14	9	673
41	226	74	365	13	30	15	47	770
42	140	50	92	2	1	8	13	306
43	152	32	90	1	9	3	5	292
44	45	1	54	0	3	6	8	117
45	119	7	577	0	6	10	33	752
46	346	149	99	3	21	11	26	655
47	370	93	105	4	14	11	13	610
48	345	21	205	8	5	14	30	628
49	380	23	152	4	5	9	29	602
50	244	170	43	4	4	5	5	475
51	167	160	72	3	2	2	9	415
52	173	329	36	15	4	10	17	584
53	230	265	19	6	3	6	2	531
54	455	220	102	5	13	14	18	827
55	260	122	29	5	8	11	24	459
56	314	231	51	2	4	11	6	619
57	477	191	27	3	1	4	14	717
58	396	285	82	4	4	8	10	789
59	171	270	80	8	34	19	32	614
60	206	267	208	4	15	14	28	742
61	181	0	45	0	6	6	5	243
62	505	182	114	14	5	6	11	837
63	420	213	74	8	7	17	14	753
64	249	176	19	5	9	18	16	492
65	526	214	108	22	13	22	18	923
66	631	267	66	21	5	9	13	1012
67	109	116	341	18	1	9	20	614
68	101	121	240	6	6	16	21	511
69	314	248	12	11	0	5	16	606
70	53	1	197	3	3	13	23	293

Contd....

Polling Station Level Election Results

Winner, Runner-up and 3rd Party Position & Winning Margin According to Polling Stations in Khanapur Assembly in Assembly Election (AE) under Adilabad Parliamentary Constituency in Telangana (2018)

Polling Station Number	Winner Party	Winner Votes (%)	Runner-up Party	Runner-up Votes (%)	Winning Margin Votes (%)	Third Party	Third Party Votes (%)	Other Votes (%)
71	INC	217 (60.45)	TRS	122 (33.98)	95 (26.47)	PRBP	8 (2.23)	12 (3.34)
72	INC	184 (34.33)	TRS	116 (21.64)	68 (12.69)	BSP	116 (21.64)	120 (22.39)
73	TRS	524 (52.19)	BJP	308 (30.68)	216 (21.51)	INC	109 (10.86)	63 (6.27)
74	INC	616 (66.38)	TRS	230 (24.78)	386 (41.6)	PRBP	12 (1.29)	70 (7.54)
75	TRS	296 (49.33)	INC	213 (35.5)	83 (13.83)	BJP	50 (8.33)	41 (6.83)
76	TRS	384 (59.17)	INC	225 (34.67)	159 (24.5)	BJP	19 (2.93)	21 (3.24)
77	TRS	250 (63.13)	INC	129 (32.58)	121 (30.55)	BJP	8 (2.02)	9 (2.27)
78	INC	350 (46.11)	TRS	307 (40.45)	43 (5.66)	BJP	43 (5.67)	59 (7.77)
79	INC	155 (44.67)	TRS	145 (41.79)	10 (2.88)	TJS	15 (4.32)	32 (9.22)
80	TRS	222 (42.37)	INC	149 (28.44)	73 (13.93)	BJP	92 (17.56)	61 (11.64)
81	TRS	201 (43.32)	INC	185 (39.87)	16 (3.45)	BJP	66 (14.22)	12 (2.59)
82	TRS	296 (45.82)	BJP	256 (39.63)	40 (6.19)	INC	27 (4.18)	67 (10.37)
83	TRS	193 (81.09)	BJP	22 (9.24)	171 (71.85)	INC	4 (1.68)	19 (7.98)
84	TRS	577 (65.49)	INC	181 (20.54)	396 (44.95)	BJP	64 (7.26)	59 (6.7)
85	TRS	349 (70.65)	INC	57 (11.54)	292 (59.11)	TJS	21 (4.25)	67 (13.56)
86	TRS	311 (53.34)	BJP	141 (24.19)	170 (29.15)	INC	61 (10.46)	70 (12.01)
87	TRS	355 (60.68)	INC	101 (17.26)	254 (43.42)	BJP	67 (11.45)	62 (10.6)
88	INC	284 (40.98)	TRS	217 (31.31)	67 (9.67)	BJP	135 (19.48)	57 (8.23)
89	TRS	167 (34.08)	BJP	152 (31.02)	15 (3.06)	INC	80 (16.33)	91 (18.57)
90	TRS	365 (62.39)	BJP	120 (20.51)	245 (41.88)	IND (PP)	19 (3.25)	81 (13.85)
91	TRS	371 (52.62)	INC	152 (21.56)	219 (31.06)	BJP	123 (17.45)	59 (8.37)
92	TRS	331 (69.68)	INC	59 (12.42)	272 (57.26)	BJP	53 (11.16)	32 (6.74)
93	TRS	275 (40.56)	BJP	190 (28.02)	85 (12.54)	INC	109 (16.08)	104 (15.34)
94	TRS	187 (42.5)	BJP	159 (36.14)	28 (6.36)	INC	43 (9.77)	51 (11.59)
95	TRS	133 (53.63)	INC	54 (21.77)	79 (31.86)	TJS	21 (8.47)	40 (16.13)
96	TRS	370 (43.68)	INC	281 (33.18)	89 (10.5)	BJP	67 (7.91)	129 (15.23)
97	TRS	121 (86.43)	BJP	4 (2.86)	117 (83.57)	PRBP	3 (2.14)	12 (8.57)
98	TRS	225 (79.51)	INC	15 (5.3)	210 (74.21)	TJS	11 (3.89)	32 (11.31)
99	TRS	445 (71.66)	INC	90 (14.49)	355 (57.17)	BSP	30 (4.83)	56 (9.02)
100	TRS	364 (53.85)	INC	244 (36.09)	120 (17.76)	BJP	20 (2.96)	48 (7.1)
101	INC	381 (51.14)	TRS	303 (40.67)	78 (10.47)	BSP	10 (1.34)	51 (6.85)
102	TRS	266 (43.32)	INC	202 (32.9)	64 (10.42)	BJP	76 (12.38)	70 (11.4)
103	TRS	437 (47.14)	INC	380 (40.99)	57 (6.15)	BJP	31 (3.34)	79 (8.52)
104	TRS	496 (52.82)	INC	329 (35.04)	167 (17.78)	BJP	28 (2.98)	86 (9.16)
105	TRS	295 (70.57)	INC	69 (16.51)	226 (54.06)	BJP	22 (5.26)	32 (7.66)

Contd....

Socio-Economic Amenities - Rural

Access to Education Facilities

Particulars	Number of Villages (% of Population)				
	Available	Not Available	If Not Available (Distance of Nearest Facility)		
			A	B	C
Govt. Primary School	161 (99)	4 (1)	2 (0)	0 (0)	0 (0)
Private Primary School	36 (33)	129 (67)	0 (0)	0 (0)	0 (0)
Govt. Middle School	73 (64)	92 (36)	21 (8)	41 (12)	20 (5)
Private Middle School	17 (19)	148 (81)	0 (0)	0 (0)	0 (0)
Govt. Secondary School	39 (50)	126 (50)	27 (12)	62 (24)	35 (13)
Private Secondary School	6 (10)	159 (90)	0 (0)	0 (0)	0 (0)
Govt. Senior Secondary School	6 (15)	159 (85)	16 (11)	62 (37)	80 (37)
Private Senior Secondary School	3 (10)	162 (90)	0 (0)	1 (1)	0 (0)
Govt. Arts and Science Degree College	1 (1)	164 (99)	2 (2)	18 (8)	53 (26)
Private Arts and Science Degree College	4 (9)	161 (91)	9 (7)	36 (24)	42 (21)
Govt. Engineering College	0 (0)	165 (100)	0 (0)	0 (0)	0 (0)
Private Engineering College	0 (0)	165 (100)	0 (0)	0 (0)	165 (100)
Govt. Medicine College	0 (0)	165 (100)	0 (0)	0 (0)	140 (79)
Private Medicine College	0 (0)	165 (100)	0 (0)	0 (0)	25 (21)
Govt. Management Institute	0 (0)	165 (100)	0 (0)	0 (0)	0 (0)
Private Management Institute	0 (0)	165 (100)	0 (0)	0 (0)	165 (100)
Govt. Polytechnic	0 (0)	165 (100)	0 (0)	0 (0)	164 (99)
Private Polytechnic	0 (0)	165 (100)	0 (0)	0 (0)	1 (1)
Govt. Vocational Training School/ITI	1 (1)	164 (99)	7 (10)	28 (18)	128 (71)
Private Vocational Training School/ITI	0 (0)	165 (100)	0 (0)	0 (0)	1 (0)
Govt. Non Formal Training Centre	1 (1)	164 (99)	5 (8)	15 (12)	144 (80)
Private Non Formal Training Centre	0 (0)	165 (100)	0 (0)	0 (0)	0 (0)
Govt. School For Disabled	0 (0)	165 (100)	0 (0)	0 (0)	165 (100)
Private School For Disabled	0 (0)	165 (100)	0 (0)	0 (0)	0 (0)
Government Others	0 (0)	165 (100)	0 (0)	0 (0)	0 (0)
Private Others	0 (0)	165 (100)	0 (0)	0 (0)	0 (0)

Note : Distance A : Less than 5 km; B : Between 5-10 km; C : 10+ km.; Source : Data Analysis is based on 2011 Census.

DISCLAIMER

The Terms of Use and Disclaimer of Datanet India Private Limited (hereinafter referred to as "Datanet") for use of this analysis report of **Khanapur Assembly Constituency (Khanapur Vidhan Sabha)** :-

1. **Assembly Factbook™** is a Registered Trade Mark owned by Datanet.
2. All the maps are sketched and graphical representation only and have not been drawn to the scale and also not to represent the actual geographical area or boundary of the unit.
3. The data for the aforesaid analysis is based on authentic sources and has been culled from the various publications of Census, CSO and NSSO for district and block level data, various central and state government departments, Central & State Elections Commissions and the concerned Returning Officers' releases, Electoral Rolls, Election results and allied publications, internal assessment, surveys, estimates and analysis. Therefore, certain adjustment of data at micro level may have been done to arrive closer to the macro data.
4. Data have been provided on an "As Is" and "As AVAILABLE" basis
5. The colours shown in the maps or diagram and charts of a particular party, alliance or AC are indicative and do not represent them.
6. This publication which includes maps, sheets, graphs and data would be the property under copyright of Datanet only. The user may use these for its internal study, analysis and research purposes. It's public display, re-selling or any commercial uses by the user are not allowed.
7. Datanet has taken due care and caution in compilation and processing of data and allied information, but does not guarantee the accuracy, adequacy or completeness of any information/analysis and will be not responsible for any errors or omissions or for the results obtained from the use of such information/analysis.
8. All the contents for the publication have been culled from various authentic sources and Datanet reasonably believes such sources to be reliable, but does not make any representations, express or implied as to the accuracy or fitness of use of such information. The information or contents of the information/analysis do not constitute advice and should not be relied upon in making (or refraining from making) any decision. Any reliance placed upon the information provided by Datanet is the sole responsibility and strictly at the user's risk.
9. In no event will Datanet be liable for any damages (including, without limitation, damages for loss of business projects, or loss of profits) arising in contract, tort or otherwise from the use of or inability to use any of its contents, or from any action taken (or refrained from being taken) as a result of using the analysis or any of its contents. Datanet its directors, owners, editors, officials, employees, distributor and agents or any associate will not be liable for any errors in the information contained or any consequences arising from the use of the contents of the provided information/analysis.
10. If any provision of these terms and conditions is held invalid or illegal or unenforceable for any reason by any court of competent jurisdiction, such provision shall be severed and the remainder of provisions of the terms and conditions shall continue in full force and effect as if the Term of Use had been executed with the invalid, illegal or unenforceable provision eliminated.
11. If there are any discrepancies in the information provided, please bring it to attention of Datanet for suitable rectification measures.

Buy Online This Complete Book At
Datanet India eBooks Store

www.indiastatpublications.com

or go directly at

[http://www.indiastatpublications.com/
Assembly_factbook/Telangana/Adilabad/ Khanapur](http://www.indiastatpublications.com/Assembly_factbook/Telangana/Adilabad/Khanapur)

 **indiastat**elections

ISBN : 978-93-5293-086-9

