



Rajasthan

# Assembly Factbook™

Khandela Assembly Constituency



Key Electoral Data of Khandela  
Assembly Constituency (Vidhan Sabha)

Rajasthan

# **Assembly Factbook™**

Khandela Assembly Constituency



Khandela Vidhan Sabha

## **Editor & Director**

Dr. R.K. Thukral

## **Research Editor**

Dr. Shafeeq Rahman

## **Compiled, Researched and Published by Datanet India Pvt. Ltd.**

D-100, 1st Floor,

Okhla Industrial Area, Phase-I,  
New Delhi- 110020.

Ph.: 91-11- 43580781-84

Email : support@indiastatpublications.com

Website : www.indiastatelections.com

## **Online Book Store :**

www.indiastatpublications.com

**Report No. :** AFB/RJ-037-0123

**ISBN :** 978-93-87293-06-9

**First Edition :** January, 2018

**Sixth Updated Edition :** January, 2023

**Price :** Rs. 11500/-

US\$ 310

**© Datanet India Pvt. Ltd.**

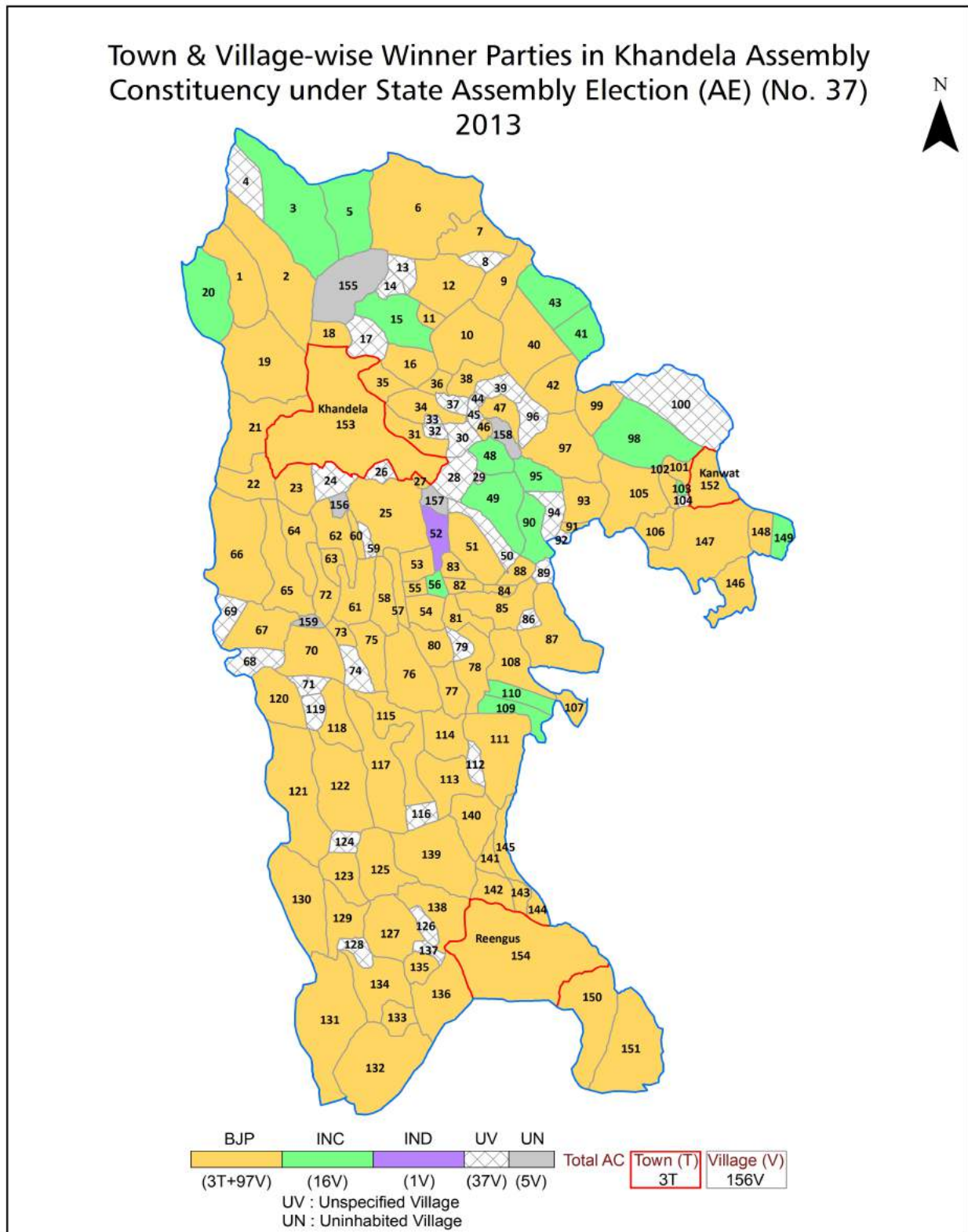
All rights reserved. No part of this book may be reproduced, stored in a retrieval system or transmitted in any form or by any means, mechanical photocopying, photographing, scanning, recording or otherwise without the prior written permission of the publisher. Please refer to Disclaimer at page no. 213 for the use of this publication.

Printed in India

## Contents

No.	Particulars	Page No.
	<b>Introduction</b>	
1	Assembly Constituency - (Vidhan Sabha) at a Glance   Features of Assembly as per Delimitation Commission of India (2008)	1-2
	<b>Location and Political Maps</b>	
2	Location Map   Boundaries of Assembly Constituency - (Vidhan Sabha) in District   Boundaries of Assembly Constituency under Parliamentary Constituency - (Lok Sabha)   Town & Village-wise Winner Parties- 2019, 2018, 2014, 2013, 2009 and 2008	3-11
	<b>Administrative Setup (2011)</b>	
3	District   Sub-district   Towns   Villages   Inhabited Villages   Uninhabited Villages   Village Panchayat   Intermediate Panchayat	12-20
	<b>Demographics (2011)</b>	
4	Population   Households   Rural/Urban Population   Towns and Villages by Population Size   Sex Ratio (Total & 0-6 Years)   Religious Population   Social Population   Literacy Rate	21-22
	<b>Electoral Features</b>	
5	Important Dates of Last Elections Held   Electors by Gender   Service Electors   Voters   Voters Turnout   Polling Stations & Average Number of Electors per Polling Station   Electors by Age Group   Present Elected Representatives	23-28
	<b>Historical Summary Election Results</b>	
6	Vote Share of Major Parties   Winning Margin (Number & Percentage)   Polarity of Parties   Summary Result of Assembly Segment of Parliamentary Elections 2019, 2014, 2009, 2004 and 1999   Summary Result of Assembly Elections 2018, 2013, 2008, 2003, 1998, 1993, 1990, 1985, 1980, 1977, 1972 and 1967	29-49
	<b>Polling Station Level Election Results</b>	
7	Name and Number of Polling Station 2019, 2018, 2014, 2013, 2009 and 2008   Polling Station-wise Electors, Voters & Voters Turnout 2019, 2018, 2014, 2013, 2009 and 2008   Polling Station wise Elections Results 2019, 2018, 2014, 2013, 2009 and 2008	50-193
	<b>Share of Assembly Constituency</b>	
8	Share of Assembly Constituency - (Vidhan Sabha) in State, District and Parliamentary Constituency - (Lok Sabha)	194
	<b>Socio-Economic Amenities (2011)</b>	
9	Access to Administrative Units   Agricultural, Manufacturing and Industrial Commodities   Demographic Indicators   Education   Health & Manpower   Drinking Water Supply   Sanitation   Entertainment and Recreations Infrastructure   Power   Food Allocation Distribution and Marketing of Agriculture Commodities Infrastructure   Transport and Road Infrastructure   Communication   Banking and Financial Services   Land Use   Irrigation Source	196-210
10	<b>Abbreviation &amp; Sources</b>	211-212
11	<b>Disclaimer</b>	213

## Location & Political Map





## Administrative Setup

### List of Village Panchayat & Intermediate Panchayat (Block) Name - 2011

Village Name	Village Panchayat Name	Intermediate Panchayat Name
Abhawas	Abhawas	Srimadhapur
Agloi	Royal	Khandela
Athbiga	Dharpura	Khandela
Bahadurpura	Doodhwalon Ka Bas	Khandela
Bahooji Ki Dhani	Royal	Khandela
Balaji Nagar	Loharwara	Khandela
Balluwali	Jairampura	Khandela
Balwar	Sujana	Khandela
Bamanwas@Sajanpura	Doodhwalon Ka Bas	Khandela
Bamarda	Kerpura	Khandela
Baori	Baori	Khandela
Barsinghpura	Barsinghpura	Khandela
Basri	Basri	Khandela
Bassi	Jairampura	Khandela
Bhadwari	Bhadwari	Khandela
Bhaira With Luharwas	Kotri Luharwas	Khandela
Bhawanipura	Chomu Purohitan	Srimadhapur
Bhojpur	Barsinghpura	Khandela
Bhopatpura	Malakali	Srimadhapur
Biharipur	Barsinghpura	Khandela
Bodala	Dhani Guman Singh	Khandela
Chak Basri	Basri	Khandela
Chak Chhajna	Basri	Khandela
Chak Dulhepura No. 1	Dulhepura	Khandela
Chak Hod	Dulhepura	Khandela
Chak Jairampura	Jairampura	Khandela
Chak Khandela No.1	Basri	Khandela
Chak Khandela No.2	Basri	Khandela
Chak Khatundra	Khatundra	Khandela

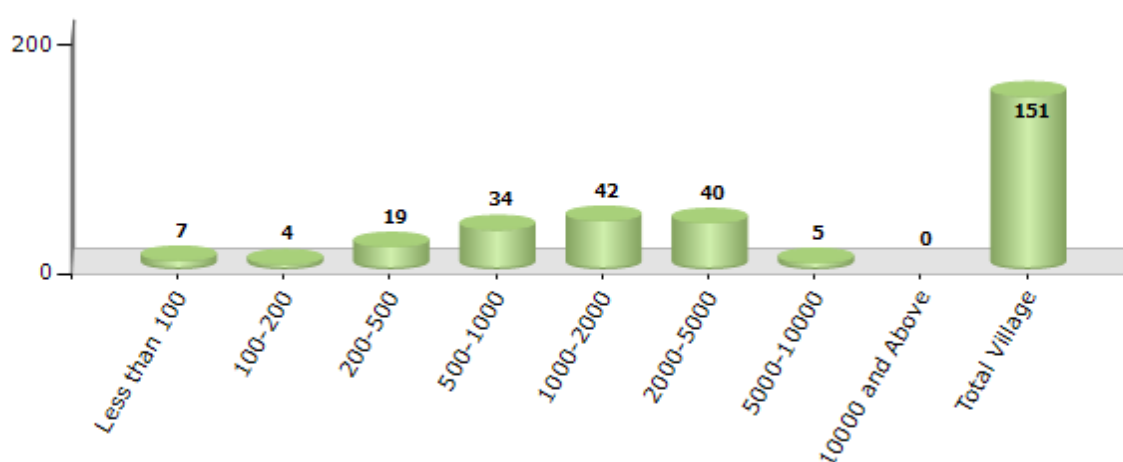
Contd....

## Demographic

### Number of Villages by Population Size - 2011

Less than 100	100-200	200-500	500-1000	1000-2000	2000-5000	5000-10000	10000 and Above	Total Village
7	4	19	34	42	40	5	0	151

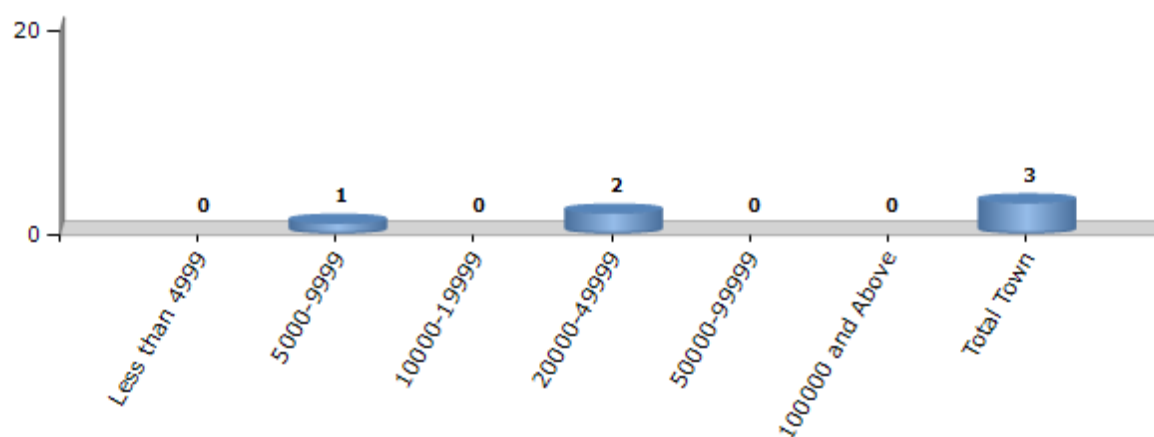
Number of Villages by Population Size - 2011



### Number of Towns by Population Size - 2011

Less than 4999	5000-9999	10000-19999	20000-49999	50000-99999	100000 and Above	Total Town
0	1	0	2	0	0	3

Number of Towns by Population Size - 2011

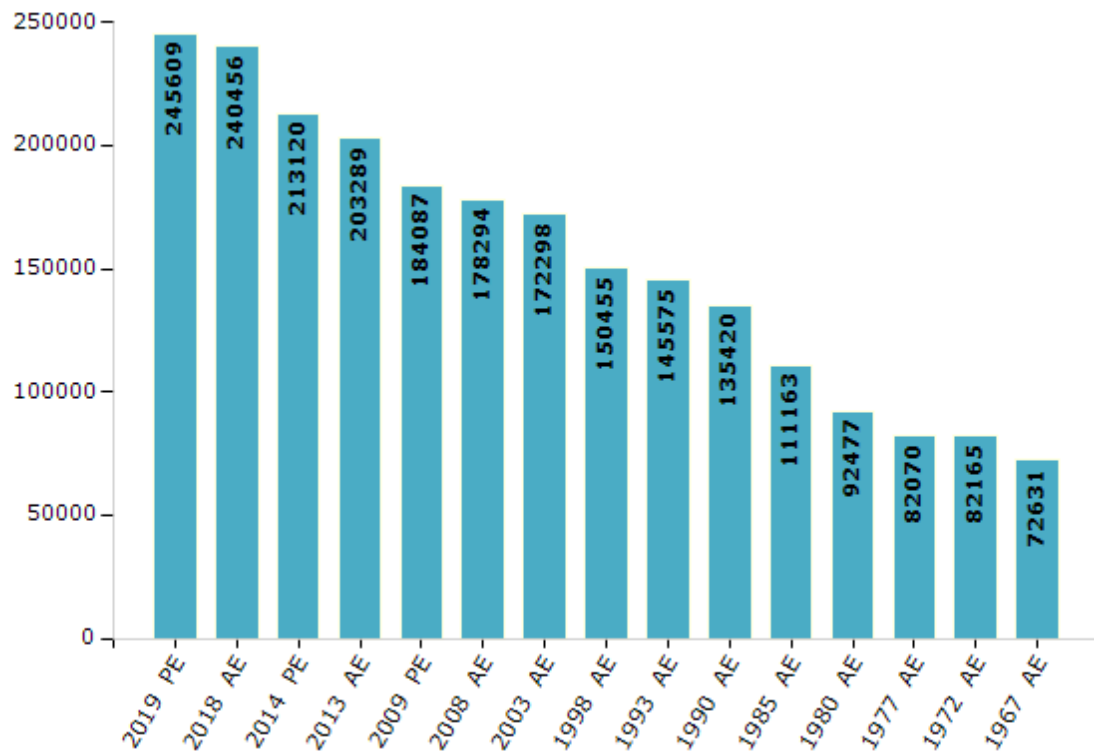


## Electoral Features

### Electors by Male & Female

Year	Male	Female	Others	Total	Year	Male	Female	Others	Total
2019 PE	130913	114696	0	245609	1993 AE	77675	67900	-	145575
2018 AE	128140	112316	0	240456	1990 AE	71988	63432	-	135420
2014 PE	114587	98533	0	213120	1985 AE	58046	53117	-	111163
2013 AE	109369	93920	0	203289	1980 AE	47324	45153	-	92477
2009 PE	98223	85864	-	184087	1977 AE	42414	39656	-	82070
2008 AE	94786	83508	-	178294	1972 AE	41535	40630	-	82165
2004 PE	-	-	-	-	1967 AE	-	-	-	72631
2003 AE	91604	80694	-	172298	1962 AE	-	-	-	-
1999 PE	-	-	-	-	1957 AE	-	-	-	-
1998 AE	79249	71206	-	150455	1952 AE	-	-	-	-

Number of Electors



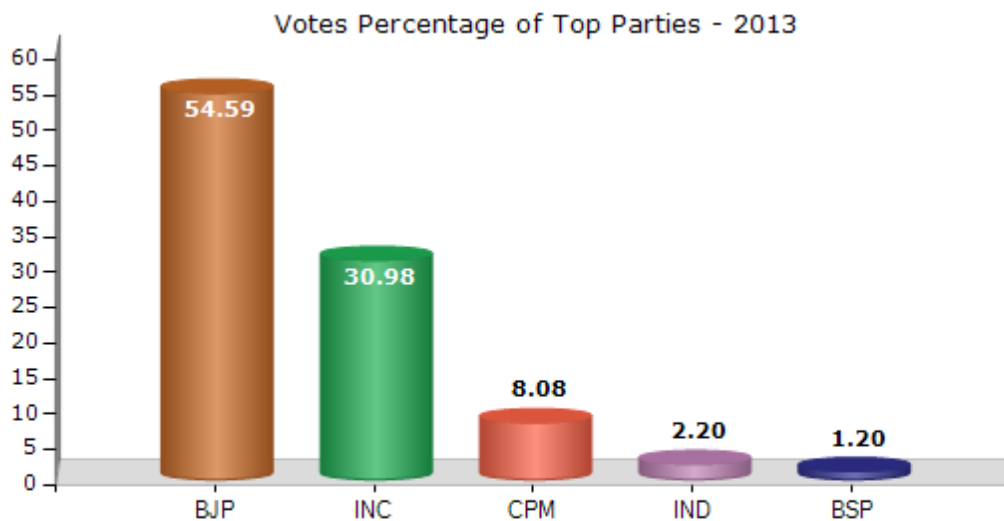
**Note :** AE : Assembly Election, PE : Assembly Segment of Parliamentary Election



## Historical Summary Election Results

### Summary Result of Assembly Election - 2013

Candidate Name	Party	Votes	Votes %
Banshidhar	BJP	81837	54.59
Giriraj	INC	46443	30.98
Subhash Nehra	CPM	12107	8.08
Satveer Kudi	IND	3303	2.2
Anup Khandela	BSP	1803	1.2
Om Prakash Dayma	BA S D	836	0.56
Braham Prakash	IND	806	0.54
Ashok Kumar Mahich	MEDP	701	0.47
Ramdev Singh	IND	613	0.41
	NOTA	1474	0.98



## Polling Station Level Election Results

### Number and Name of Polling Stations (PS) (2018)

Number of Polling Stations	Name of Polling Stations	Number of Polling Stations	Name of Polling Stations
1	Government Adarsh Senior Secondary School Gurara (Right Side)	22	Government Adarsh Senior Secondary School Kerpura (Left Side)
2	Government Adarsh Senior Secondary School Gurara (Left Side)	23	Government Upper Primary School Karoi
3	Government Upper Primary School Gurara	24	Government Secondary School Saledipura
4	Government Upper Primary School Sukhpura (Right Side)	25	Government Primary School Dharpura
5	Government Upper Primary School Sukhpura (Left Side)	26	Government Adarsh Senior Secondary School Dayara (Right Side)
6	Government Upper Primary School Sewali	27	Government Adarsh Senior Secondary School Dayara (Left Side)
7	Government Primary School Guwariya	28	Panchayat Bhawan Dayara
8	Government Adarsh Senior Secondary School Paniharwas	29	Atal Seva Kendra Dayara
9	Government Adarsh Senior Secondary School Paniharwas (Left Side)	30	Sri Pandit Badrinarayan Kalawatia Government Varisttha Upadhyay Sanskrit School Khandela (Right Side)
10	Government Primary School Bhaira Mai Luharwas	31	Sri Pandit Badrinarayan Kalawatia Government Varisttha Upadhyay Sanskrit School Khandela (Left Side)
11	Government Upper Primary School Tiwari Ki Dhani No. 1	32	Government Primary School Bagato Ki Dhani Kanwat Road Dayara
12	Government Girls Upper Primary School Kotari Luharwas	33	Government Senior Secondary School Rampura (Right Side)
13	Government Primary School Kotri Luharwas (Right Side)	34	Government Senior Secondary School Rampura (Left Side)
14	Government Primary School Kotri Luharwas (Left Side)	35	Government Upper Primary Sanskrit School Rampura (Right Side)
15	Government Senior Secondary School Kotri Luharwas (Right Side)	36	Government Upper Primary Sanskrit School Rampura (Left Side)
16	Government Senior Secondary School Kotri Luharwas (Left Side)	37	Government Upper Primary School Athabigha
17	Government Adarsh Senior Secondary School Dhani Gumansingh (Right Side)	38	Government Upper Primary School Bamarda
18	Government Adarsh Senior Secondary School Dhani Gumansingh (Left Side)	39	Government Adarsh Senior Secondary School Chokari New Building (Right Side)
19	Government Secondary Salwari (Right Side)	40	Government Adarsh Senior Secondary School Chokari New Building (Left Side)
20	Government Secondary School Salwari (Left Side)	41	Government Primary School Chokari
21	Government Adarsh Senior Secondary School Kerpura (Right Side)	42	Government Girls Upper Primary School Chokari

Contd....

## Polling Station Level Election Results

### Polling Station-wise Votes Secured by Overall Top Five Parties in Khandela Assembly in Assembly Election (AE) under Sikar Parliamentary Constituency in Rajasthan (2018)

Number of Polling Station	Winner - Mahadeo Singh (IND)	Runner-up - Banshidhar Bajiya (BJP)	3rd - Subhash Meel (INC)	4th - Subhash Nehara (CPM)	5th - Hari Ram (IND)	NOTA	Other	Total Votes Secured
36	114	207	73	6	0	7	7	414
37	146	164	128	7	1	5	9	460
38	262	186	247	11	15	4	19	744
39	244	209	282	118	4	8	24	889
40	172	184	336	18	1	8	13	732
41	410	160	158	139	5	12	27	911
42	120	386	196	26	2	14	18	762
43	239	142	109	63	3	7	12	575
44	308	154	92	9	25	11	34	633
45	267	118	141	12	4	11	19	572
46	285	204	66	25	2	3	8	593
47	349	115	149	9	1	13	16	652
48	399	200	127	34	4	6	21	791
49	208	120	274	17	64	12	43	738
50	58	374	32	12	3	9	7	495
51	99	296	34	12	2	11	17	471
52	386	226	293	6	2	7	26	946
53	205	189	417	10	6	14	35	876
54	203	37	543	12	3	2	21	821
55	308	222	118	58	4	14	16	740
56	412	232	109	11	14	26	28	832
57	297	155	308	10	0	15	20	805
58	193	48	179	28	4	8	18	478
59	284	303	151	2	1	13	12	766
60	432	89	242	7	0	11	23	804
61	351	274	145	5	3	16	9	803
62	323	310	209	11	5	20	29	907
63	147	90	178	3	2	7	16	443
64	108	208	48	2	0	0	6	372
65	140	236	73	2	5	7	7	470
66	178	17	282	2	0	1	15	495
67	399	266	127	34	4	18	28	876
68	215	127	179	13	1	9	20	564
69	168	219	137	19	1	7	16	567
70	126	126	129	60	4	5	4	454

Contd....

## Polling Station Level Election Results

**Winner, Runner-up and 3rd Party Position & Winning Margin According to Polling Stations in Khandela Assembly in Assembly Election (AE) under Sikar Parliamentary Constituency in Rajasthan (2018)**

Polling Station Number	Winner Party	Winner Votes (%)	Runner-up Party	Runner-up Votes (%)	Winning Margin Votes (%)	Third Party	Third Party Votes (%)	Other Votes (%)
71	BJP	293 (37.86)	IND (MS)	256 (33.07)	37 (4.79)	INC	106 (13.7)	119 (15.37)
72	INC	244 (30.93)	BJP	201 (25.48)	43 (5.45)	IND (MS)	199 (25.22)	145 (18.38)
73	IND (MS)	173 (40.71)	CPM	89 (20.94)	84 (19.77)	BJP	78 (18.35)	85 (20)
74	CPM	250 (38.58)	IND (MS)	154 (23.77)	96 (14.81)	BJP	148 (22.84)	96 (14.81)
75	INC	239 (41.07)	IND (MS)	176 (30.24)	63 (10.83)	BJP	81 (13.92)	86 (14.78)
76	INC	199 (41.29)	IND (MS)	121 (25.1)	78 (16.19)	BJP	75 (15.56)	87 (18.05)
77	BJP	297 (37.08)	IND (MS)	260 (32.46)	37 (4.62)	INC	131 (16.35)	113 (14.11)
78	BJP	299 (42.05)	IND (MS)	263 (36.99)	36 (5.06)	INC	80 (11.25)	69 (9.7)
79	BJP	332 (40.59)	IND (MS)	264 (32.27)	68 (8.32)	INC	98 (11.98)	124 (15.16)
80	IND (MS)	265 (33.38)	INC	213 (26.83)	52 (6.55)	BJP	198 (24.94)	118 (14.86)
81	IND (MS)	216 (33.75)	BJP	211 (32.97)	5 (0.78)	INC	120 (18.75)	93 (14.53)
82	INC	139 (32.71)	BJP	106 (24.94)	33 (7.77)	CPM	90 (21.18)	90 (21.18)
83	IND (MS)	227 (30.59)	INC	179 (24.12)	48 (6.47)	CPM	158 (21.29)	178 (23.99)
84	INC	187 (37.7)	BJP	138 (27.82)	49 (9.88)	CPM	85 (17.14)	86 (17.34)
85	INC	190 (35.32)	BJP	167 (31.04)	23 (4.28)	CPM	117 (21.75)	64 (11.9)
86	BJP	210 (29.33)	INC	189 (26.4)	21 (2.93)	IND (MS)	139 (19.41)	178 (24.86)
87	BJP	226 (34.88)	CPM	212 (32.72)	14 (2.16)	IND (MS)	154 (23.77)	56 (8.64)
88	IND (MS)	238 (42.2)	BJP	151 (26.77)	87 (15.43)	INC	125 (22.16)	50 (8.87)
89	IND (MS)	326 (41.42)	BJP	194 (24.65)	132 (16.77)	INC	143 (18.17)	124 (15.76)
90	INC	237 (31.23)	IND (MS)	220 (28.99)	17 (2.24)	BJP	207 (27.27)	95 (12.52)
91	BJP	274 (40.12)	INC	174 (25.48)	100 (14.64)	IND (MS)	166 (24.3)	69 (10.1)
92	IND (MS)	316 (41.47)	BJP	293 (38.45)	23 (3.02)	INC	113 (14.83)	40 (5.25)
93	IND (MS)	473 (57.61)	BJP	172 (20.95)	301 (36.66)	INC	120 (14.62)	56 (6.82)
94	BJP	247 (43.26)	IND (MS)	193 (33.8)	54 (9.46)	INC	101 (17.69)	30 (5.25)
95	IND (MS)	433 (72.53)	BJP	79 (13.23)	354 (59.3)	INC	53 (8.88)	32 (5.36)
96	IND (MS)	290 (68.56)	BJP	70 (16.55)	220 (52.01)	INC	23 (5.44)	40 (9.46)
97	IND (MS)	668 (77.76)	BJP	128 (14.9)	540 (62.86)	INC	21 (2.44)	42 (4.89)
98	IND (MS)	474 (64.84)	BJP	104 (14.23)	370 (50.61)	INC	63 (8.62)	90 (12.31)
99	IND (MS)	422 (66.25)	BJP	153 (24.02)	269 (42.23)	INC	18 (2.83)	44 (6.91)
100	IND (MS)	424 (55.79)	BJP	168 (22.11)	256 (33.68)	INC	113 (14.87)	55 (7.24)
101	INC	309 (62.93)	IND (MS)	92 (18.74)	217 (44.19)	BJP	39 (7.94)	51 (10.39)
102	INC	178 (36.03)	IND (MS)	154 (31.17)	24 (4.86)	CPM	96 (19.43)	66 (13.36)
103	IND (MS)	204 (31.88)	CPM	184 (28.75)	20 (3.13)	BJP	135 (21.09)	117 (18.28)
104	IND (MS)	146 (32.09)	BJP	112 (24.62)	34 (7.47)	CPM	108 (23.74)	89 (19.56)
105	INC	286 (44.41)	BJP	184 (28.57)	102 (15.84)	IND (MS)	115 (17.86)	59 (9.16)

Contd....

## Socio-Economic Amenities - Rural

### Access to Education Facilities

Particulars	Number of Village (% of Population)				
	Available	Not Available	If Not Available (Distance of Nearest Facility)		
			A	B	C
Govt. Primary School	121 (97)	30 (3)	10 (1)	0 (0)	0 (0)
Private Primary School	83 (80)	68 (20)	16 (2)	4 (0)	0 (0)
Govt. Middle School	82 (84)	69 (16)	26 (5)	3 (0)	0 (0)
Private Middle School	79 (77)	72 (23)	19 (4)	4 (1)	1 (0)
Govt. Secondary School	48 (61)	103 (39)	56 (19)	13 (4)	0 (0)
Private Secondary School	60 (69)	91 (31)	9 (2)	5 (2)	1 (0)
Govt. Senior Secondary School	19 (33)	132 (67)	39 (17)	42 (19)	6 (3)
Private Senior Secondary School	26 (34)	125 (66)	20 (7)	6 (2)	2 (0)
Govt. Arts and Science Degree College	0 (0)	151 (100)	0 (0)	14 (11)	15 (10)
Private Arts and Science Degree College	2 (4)	149 (96)	19 (13)	58 (41)	43 (22)
Govt. Engineering College	0 (0)	151 (100)	0 (0)	0 (0)	4 (3)
Private Engineering College	0 (0)	151 (100)	0 (0)	7 (4)	140 (94)
Govt. Medicine College	0 (0)	151 (100)	0 (0)	0 (0)	105 (68)
Private Medicine College	0 (0)	151 (100)	0 (0)	0 (0)	46 (32)
Govt. Management Institute	0 (0)	151 (100)	0 (0)	1 (2)	88 (61)
Private Management Institute	0 (0)	151 (100)	0 (0)	10 (7)	52 (30)
Govt. Polytechnic	0 (0)	151 (100)	0 (0)	0 (0)	87 (60)
Private Polytechnic	0 (0)	151 (100)	0 (0)	0 (0)	64 (40)
Govt. Vocational Training School/ITI	1 (1)	150 (99)	0 (0)	5 (5)	32 (26)
Private Vocational Training School/ITI	4 (3)	147 (97)	8 (4)	37 (24)	65 (38)
Govt. Non Formal Training Centre	0 (0)	151 (100)	5 (2)	13 (9)	75 (48)
Private Non Formal Training Centre	0 (0)	151 (100)	0 (0)	4 (3)	54 (38)
Govt. School For Disabled	0 (0)	151 (100)	0 (0)	0 (0)	151 (100)
Private School For Disabled	0 (0)	151 (100)	0 (0)	0 (0)	0 (0)
Government Others	0 (0)	151 (100)	0 (0)	0 (0)	0 (0)
Private Others	0 (0)	151 (100)	0 (0)	0 (0)	0 (0)

Note : Distance A : Less than 5 km; B : Between 5-10 km; C : 10+ km.; Source : Data Analysis is based on 2011 Census.

## DISCLAIMER

The Terms of Use and Disclaimer of Datanet India Private Limited (hereinafter referred to as "Datanet") for use of this analysis report of **Khandela Assembly Constituency (Khandela Vidhan Sabha)** :-

1. **Assembly Factbook™** is a Registered Trade Mark owned by Datanet.
2. All the maps are sketched and graphical representation only and have not been drawn to the scale and also not to represent the actual geographical area or boundary of the unit.
3. The data for the aforesaid analysis is based on authentic sources and has been culled from the various publications of Census, CSO and NSSO for district and block level data, various central and state government departments, Central & State Elections Commissions and the concerned Returning Officers' releases, Electoral Rolls, Election results and allied publications, internal assessment, surveys, estimates and analysis. Therefore, certain adjustment of data at micro level may have been done to arrive closer to the macro data.
4. Data have been provided on an "As Is" and "As AVAILABLE" basis
5. The colours shown in the maps or diagram and charts of a particular party, alliance or AC are indicative and do not represent them.
6. This publication which includes maps, sheets, graphs and data would be the property under copyright of Datanet only. The user may use these for its internal study, analysis and research purposes. It's public display, re-selling or any commercial uses by the user are not allowed.
7. Datanet has taken due care and caution in compilation and processing of data and allied information, but does not guarantee the accuracy, adequacy or completeness of any information/analysis and will be not responsible for any errors or omissions or for the results obtained from the use of such information/analysis.
8. All the contents for the publication have been culled from various authentic sources and Datanet reasonably believes such sources to be reliable, but does not make any representations, express or implied as to the accuracy or fitness of use of such information. The information or contents of the information/analysis do not constitute advice and should not be relied upon in making (or refraining from making) any decision. Any reliance placed upon the information provided by Datanet is the sole responsibility and strictly at the user's risk.
9. In no event will Datanet be liable for any damages (including, without limitation, damages for loss of business projects, or loss of profits) arising in contract, tort or otherwise from the use of or inability to use any of its contents, or from any action taken (or refrained from being taken) as a result of using the analysis or any of its contents. Datanet its directors, owners, editors, officials, employees, distributor and agents or any associate will not be liable for any errors in the information contained or any consequences arising from the use of the contents of the provided information/analysis.
10. If any provision of these terms and conditions is held invalid or illegal or unenforceable for any reason by any court of competent jurisdiction, such provision shall be severed and the remainder of provisions of the terms and conditions shall continue in full force and effect as if the Term of Use had been executed with the invalid, illegal or unenforceable provision eliminated.
11. If there are any discrepancies in the information provided, please bring it to attention of Datanet for suitable rectification measures.



**Buy Online This Complete Book At  
Datanet India eBooks Store**

**[www.indiastatpublications.com](http://www.indiastatpublications.com)**

**or go directly at**

**[http://www.indiastatpublications.com/  
Assembly\\_factbook/Rajasthan/Sikar/ Khandela](http://www.indiastatpublications.com/Assembly_factbook/Rajasthan/Sikar/Khandela)**

 **indiastat**elections

ISBN : 978-93-87293-06-9

