



Punjab

# Assembly Factbook™

Fatehgarh Sahib Assembly Constituency



Key Electoral Data of Fatehgarh Sahib  
Assembly Constituency (Vidhan Sabha)

Punjab

# **Assembly Factbook™**

Fatehgarh Sahib Assembly Constituency



Fatehgarh Sahib Vidhan Sabha

**Editor & Director**

Dr. R.K. Thukral

**Research Editor**

Dr. Shafeeq Rahman

**Compiled, Researched and Published by  
Datanet India Pvt. Ltd.**

D-100, 1st Floor,

Okhla Industrial Area, Phase-I,

New Delhi- 110020.

Ph.: 91-11- 43580781-84

Email : support@indiastatpublications.com

Website : www.indiastatelections.com

**Online Book Store :**

www.indiastatpublications.com

**Report No. :** AFB/PB-055-0123

**ISBN :** 978-93-5822-383-5

**First Edition :** January, 2018

**Sixth Updated Edition :** January, 2023

**Price :** Rs.11500/-

US\$ 310

© **Datanet India Pvt. Ltd.**

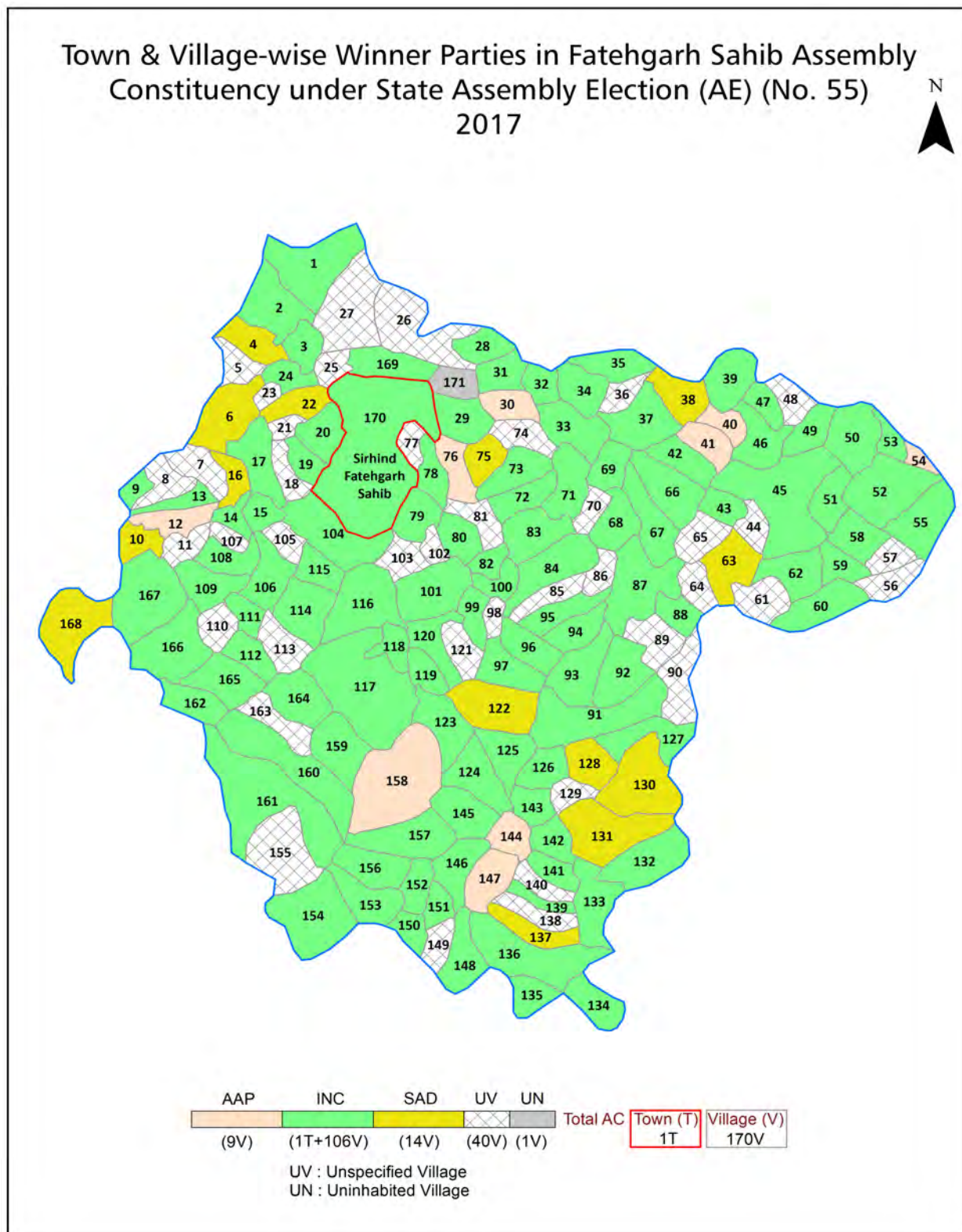
All rights reserved. No part of this book may be reproduced, stored in a retrieval system or transmitted in any form or by any means, mechanical photocopying, photographing, scanning, recording or otherwise without the prior written permission of the publisher. Please refer to Disclaimer at page no. 215 for the use of this publication.

Printed in India

No.	Particulars	Page No.
	<b>Introduction</b>	
1	Assembly Constituency - (Vidhan Sabha) at a Glance   Features of Assembly as per Delimitation Commission of India (2008)	1-2
	<b>Location and Political Maps</b>	
2	Location Map   Boundaries of Assembly Constituency - (Vidhan Sabha) in District   Boundaries of Assembly Constituency under Parliamentary Constituency - (Lok Sabha)   Town & Village-wise Winner Parties- 2022, 2019, 2017, 2014, 2012 and 2009	3-11
	<b>Administrative Setup (2011)</b>	
3	District   Sub-district   Towns   Villages   Inhabited Villages   Uninhabited Villages   Village Panchayat   Intermediate Panchayat	12-21
	<b>Demographics (2011)</b>	
4	Population   Households   Rural/Urban Population   Towns and Villages by Population Size   Sex Ratio (Total & 0-6 Years)   Religious Population   Social Population   Literacy Rate	22-23
	<b>Electoral Features</b>	
5	Important Dates of Last Elections Held   Electors by Gender   Service Electors   Voters   Voters Turnout   Polling Stations & Average Number of Electors per Polling Station   Electors by Age Group   Present Elected Representatives	24-29
	<b>Historical Summary Election Results</b>	
6	Vote Share of Major Parties   Winning Margin (Number & Percentage)   Polarity of Parties   Summary Result of Assembly Segment of Parliamentary Elections 2019, 2014 and 2009   Summary Result of Assembly Elections 2022, 2017 and 2012	30-39
	<b>Polling Station Level Election Results</b>	
7	Name and Number of Polling Station 2022, 2019, 2017, 2014, 2012 and 2009   Polling Station-wise Electors, Voters & Voters Turnout 2022, 2019, 2017, 2014, 2012 and 2009   Polling Station wise Elections Results 2022, 2019, 2017, 2014, 2012 and 2009	40-157
8	<b>Panchayat Election Results</b> Panchayat Result 2013	158-196
	<b>Share of Assembly Constituency</b>	
9	Share of Assembly Constituency - (Vidhan Sabha) in State, District and Parliamentary Constituency - (Lok Sabha)	197
	<b>Socio-Economic Amenities (2011)</b>	
10	Access to Administrative Units   Agricultural, Manufacturing and Industrial Commodities   Demographic Indicators   Education   Health & Manpower   Drinking Water Supply   Sanitation   Entertainment and Recreations Infrastructure   Power   Food Allocation Distribution and Marketing of Agriculture Commodities Infrastructure   Transport and Road Infrastructure   Communication   Banking and Financial Services   Land Use   Irrigation Source	199-213
11	<b>Abbreviation &amp; Sources</b>	214
12	<b>Disclaimer</b>	215



## Location & Political Map



## Administrative Setup

### List of Village Panchayat & Intermediate Panchayat (Block) Name- 2011

Village Name	Village Panchayat Name	Intermediate Panchayat Name
Bulebas Alias Mukandpura (291)	Bulebas Alias Mukandpura	Sirhind
Adampur (147)	Adampur	Sirhind
Alipur Sodhian (46)	Alipur Sodhian	Sirhind
Amar Garh (271)	Amar Garh	Sirhind
Anaitpura (118)	Anaitpura	Khera
Arain Majra (127)	Arain Majra	Bassi Pathana
Arain Majra (299)	Arain Majra	Sirhind
Atapur (324)	Atapur	Sirhind
Badali Ala Singh (222)	Badali Ala Singh	Khera
Badali Maiki (249)	Badali Maiki	Khera
Badhochhi Kalan (303)	Badhochhi Kalan	Sirhind
Badhochhi Khurd (304)	Badhochhi Khurd	Sirhind
Bagh Sikandar (77)	Bagh Sikandar	Bassi Pathana
Bagrian (283)	Bagrian	Sirhind
Balahra (117)	Balahra	Khera
Balahri Kalan (165)	Balahri Kalan	Khera
Balpur (341)	Balpur	Sirhind
Bambe Majra (167)	Bambe Majra	Khera
Baras (256)	Baras	Khera
Barkatpur (151)	Barkatpur	Sirhind
Basantpura (343)	Basantpura	Sirhind
Behlolpur (270)	Behlolpur	Sirhind
Bhagrana (247)	Bhagrana	Khera
Bhaini Kalan (260)	Bhaini Kalan	Khera
Bhaini Khurd (261)	Bhaini Khurd	Khera
Bhaironpur (114)	Bhaironpur	Khera
Bhal Majra (312)	Bhal Majra	Sirhind
Bhamarsi Buland (52)	Bhamarsi Buland	Sirhind
Bhamarsi Zer (57)	Bhamarsi Zer	Sirhind

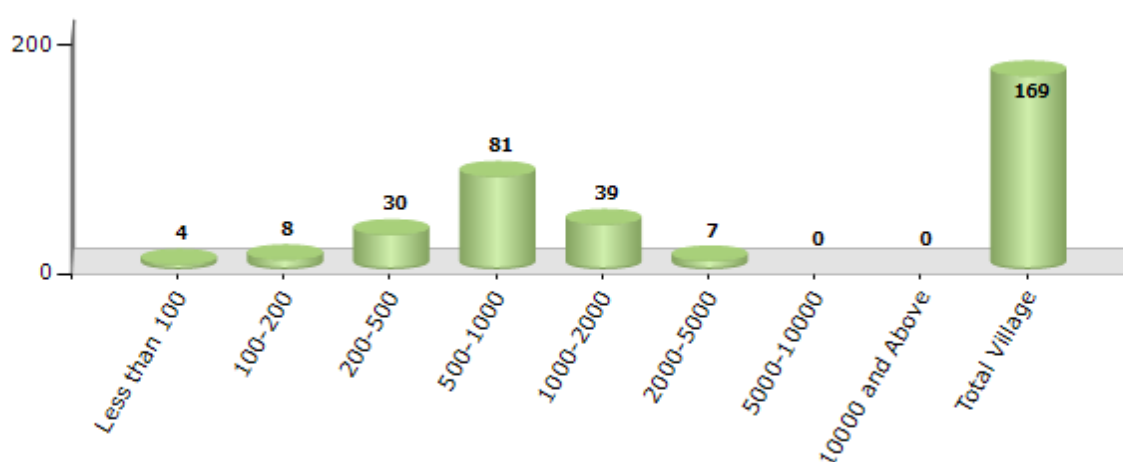
Contd....

## Demographics

### Number of Villages by Population Size - 2011

Less than 100	100-200	200-500	500-1000	1000-2000	2000-5000	5000-10000	10000 and Above	Total Village
4	8	30	81	39	7	0	0	169

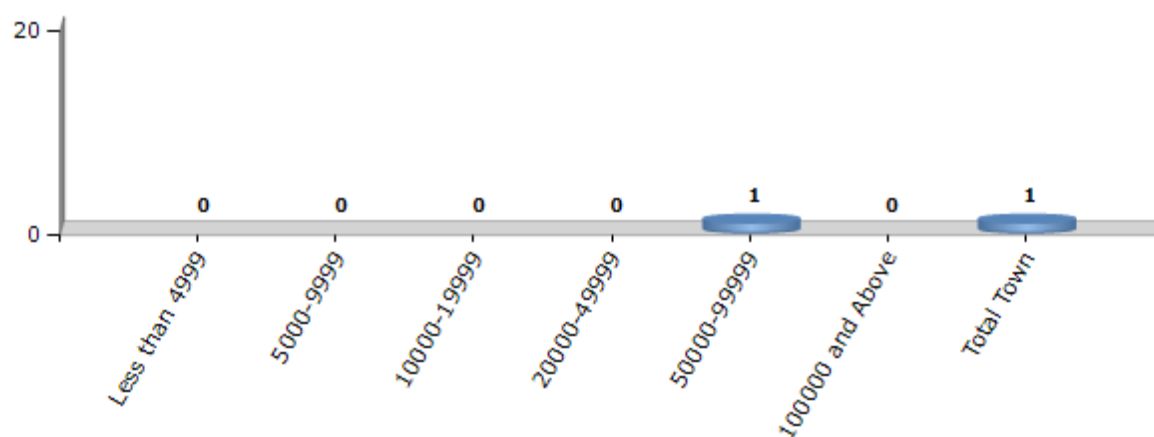
Number of Villages by Population Size - 2011



### Number of Towns by Population Size - 2011

Less than 4999	5000-9999	10000-19999	20000-49999	50000-99999	100000 and Above	Total Town
0	0	0	0	1	0	1

Number of Towns by Population Size - 2011



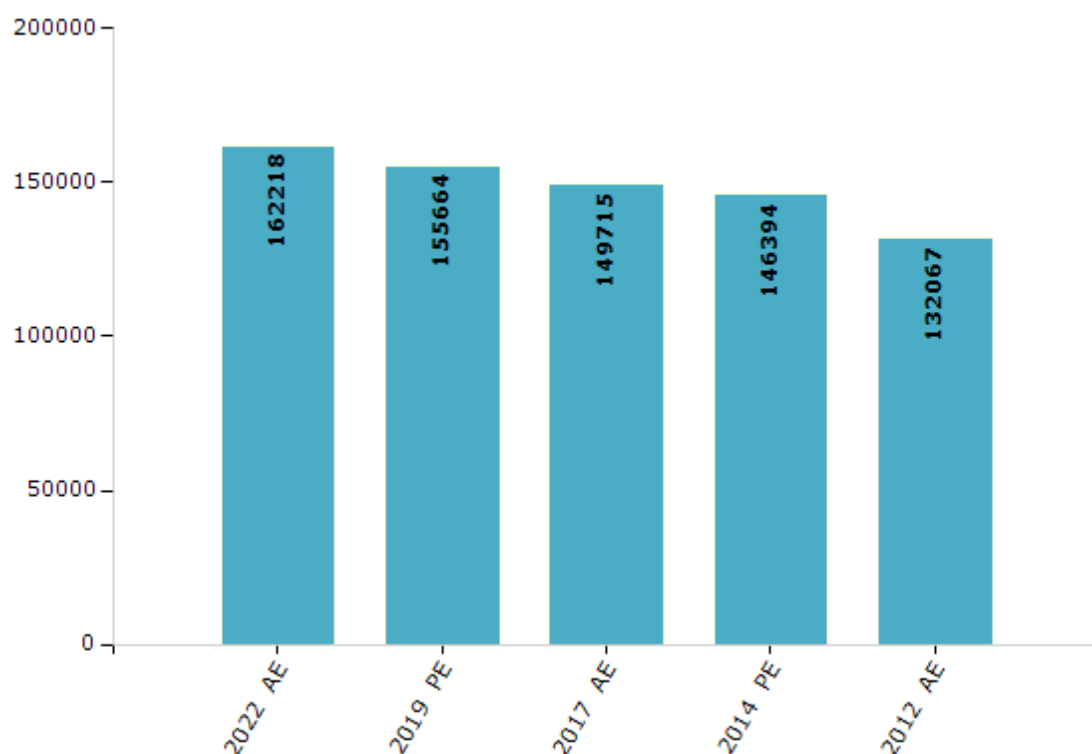
## Electoral Features

### Electors by Male & Female

Year	Male	Female	Others	Total
2022 AE	85239	76976	3	162218
2019 PE	81913	73749	2	155664
2017 AE	79160	70555	0	149715
2014 PE	76819	69575	0	146394
2012 AE	70083	61984	0	132067
2009 PE	-	-	-	-
2007 AE	-	-	-	-
2004 PE	-	-	-	-
2002 AE	-	-	-	-
1999 PE	-	-	-	-
1997 AE	-	-	-	-

Year	Male	Female	Others	Total
1992 AE	-	-	-	-
1985 AE	-	-	-	-
1980 AE	-	-	-	-
1977 AE	-	-	-	-
1972 AE	-	-	-	-
1969 AE	-	-	-	-
1967 AE	-	-	-	-
1962 AE	-	-	-	-
1957 AE	-	-	-	-
1952 AE	-	-	-	-

Number of Electors



**Note :** AE : Assembly Election, PE : Assembly Segment of Parliamentary Election

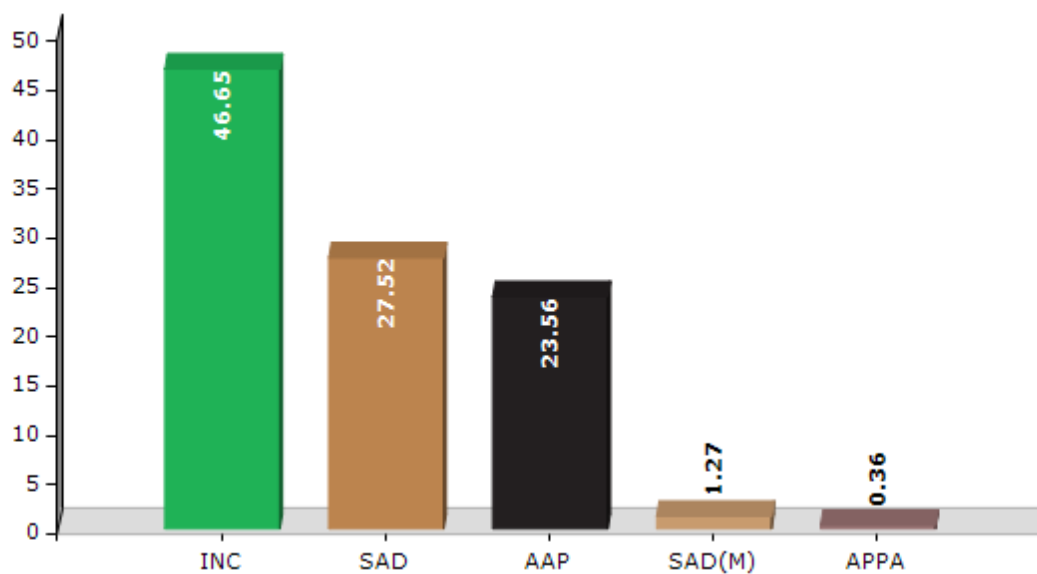


## Historical Summary Election Results

### Summary Result of Assembly Election - 2017

Candidate Name	Party	Votes	Votes %
Kuljit Singh Nagra	INC	58205	46.65
Didar Singh Bhatti	SAD	34338	27.52
Lakhvir Singh Rai	AAP	29393	23.56
Kuldip Singh	SAD(M)	1589	1.27
Tarlochan Singh	APPA	449	0.36
	NOTA	803	0.64

Votes Percentage of Top Parties - 2017



## Polling Station Level Election Results

### Number and Name of Polling Stations (PS) (2022)

Number of Polling Stations	Name of Polling Stations	Number of Polling Stations	Name of Polling Stations
1	Govt.Ele.School, Firozpur	22	Govt.Ele.School ,Tarkhan Majra
2	Govt.Ele.School, Bagh Sikander	23	Panchyat Ghar, Shekhpura Urf Narainpura
3	Govt.Ele.School, Jandali	24	Govt.Ele.School, Khanpur
4	Govt.Ele.School, Harbanspura,	25	Govt.Ele.School, Harlal Pura,
5	Govt.Ele.School, Harbanspura,	26	Govt.Ele.School, Dera Meer Meeran,
6	Govt.Ele.School, Mandhour	27	Govt High School Talanian
7	Govt.Ele.School Alipur Sodhian	28	Govt High School Talanian
8	Govt.Ele.School, Mulanpur Kalan,	29	Govt.Ele.School, Talanian
9	Govt.Ele.School, Mullanpur Khurd,	30	Govt.Ele.School, Talanian
10	Govt Ele. School, Fatehpur	31	Govt.Ele.School, Bahadargarh
11	Govt.Ele.School, Kheri,	32	Govt.Ele.School, Bahadargarh
12	Govt.Ele.School, Bhamarsi Buland,	33	Govt.Ele.School, Attewali
13	Govt.Ele.School, Bir Bhamarsi	34	Agricuture Department Attewali
14	Govt.Ele.School, Bhamarsi Jer,	35	Govt.High School, Sirhind City
15	Govt.Ele.School,(Basti) Bhmarsi Jer	36	Govt. Ele. School, Sarhind City
16	Govt.Ele. School, Jallah	37	Govt. Ele. School, Sarhind City
17	Govt.Ele. School, Jallah	38	Govt.High School, Sirhind City
18	Govt. Elementry School,Sonda	39	Govt.High School, Sirhind City
19	Govt.Ele.School, Malko Majra,	40	Govt.High School, Sirhind City
20	Govt.Ele.School, Chanalon	41	Govt.High School, Sirhind City
21	Govt.Ele.School ,Tarkhan Majra	42	Baba Diyalpuri Sen.Sec.School,Dasnami Akhara,Sirhind City

Contd....

## Polling Station Level Election Results

### Polling Station-wise Votes Secured by Overall Top Five Parties in Fatehgarh Sahib Assembly in Assembly Election (AE) under Fatehgarh Sahib Parliamentary Constituency in Punjab (2022)

Number of Polling Station	Winner - Lakhbir Singh Rai (AAP)	Runner-up - Kuljit Singh Nagra (INC)	3rd - Didar Singh Bhatti (BJP)	4th - Emaan Singh Mann (SAD(M))	5th - Jagdeep Singh Cheema (SAD)	NOTA	Other	Total Votes Secured
36	406	91	130	65	23	3	17	735
37	204	104	129	13	8	1	9	468
38	325	137	68	105	67	4	17	723
39	356	93	62	79	52	3	12	657
40	380	199	149	84	45	2	14	873
41	305	123	72	54	74	4	5	637
42	310	102	22	80	75	2	10	601
43	333	140	37	71	53	4	14	652
44	359	142	103	65	40	4	11	724
45	424	137	146	35	49	3	14	808
46	357	163	130	25	37	3	12	727
47	316	112	74	113	74	5	7	701
48	359	135	226	20	18	6	8	772
49	461	147	177	14	29	5	7	840
50	343	247	138	13	24	14	22	801
51	311	93	202	11	19	2	3	641
52	223	72	113	15	13	3	8	447
53	297	131	130	12	24	1	4	599
54	166	67	107	5	14	3	1	363
55	365	141	154	30	20	6	14	730
56	243	144	300	13	26	1	9	736
57	280	138	306	20	23	2	5	774
58	317	104	303	19	61	1	5	810
59	385	126	224	27	57	4	14	837
60	208	70	77	15	40	3	15	428
61	194	112	151	4	16	1	1	479
62	323	235	129	17	37	5	9	755
63	334	115	189	15	22	5	12	692
64	436	94	138	40	39	8	22	777
65	382	73	125	41	34	3	16	674
66	471	149	83	46	19	6	13	787
67	477	200	129	33	39	4	13	895
68	443	165	104	31	28	3	9	783
69	509	196	60	46	41	6	17	875
70	341	90	116	27	52	4	13	643

Contd....

## Polling Station Level Election Results

**Winner, Runner-up and 3rd Party Position & Winning Margin According to Polling Stations in Fatehgarh Sahib Assembly in Assembly Election (AE) under Fatehgarh Sahib Parliamentary Constituency in Punjab (2022)**

Polling Station Number	Winner Party	Winner Votes (%)	Runner-up Party	Runner-up Votes (%)	Winning Margin Votes (%)	Third Party	Third Party Votes (%)	Other Votes (%)
71	AAP	293 (48.83)	BJP	145 (24.17)	148 (24.66)	INC	97 (16.17)	65 (10.83)
72	AAP	245 (48.13)	INC	115 (22.59)	130 (25.54)	BJP	89 (17.49)	60 (11.79)
73	AAP	419 (56.02)	INC	140 (18.72)	279 (37.3)	BJP	80 (10.7)	109 (14.57)
74	AAP	273 (43.68)	BJP	159 (25.44)	114 (18.24)	INC	115 (18.4)	78 (12.48)
75	AAP	179 (54.24)	INC	64 (19.39)	115 (34.85)	BJP	38 (11.52)	49 (14.85)
76	AAP	469 (55.37)	INC	146 (17.24)	323 (38.13)	SAD(M)	89 (10.51)	143 (16.88)
77	AAP	479 (57.85)	INC	127 (15.34)	352 (42.51)	SAD(M)	81 (9.78)	141 (17.03)
78	AAP	142 (50.53)	INC	84 (29.89)	58 (20.64)	BJP	26 (9.25)	29 (10.32)
79	AAP	270 (40.24)	INC	142 (21.16)	128 (19.08)	SAD(M)	83 (12.37)	176 (26.23)
80	AAP	166 (49.11)	INC	75 (22.19)	91 (26.92)	SAD(M)	49 (14.5)	48 (14.2)
81	AAP	253 (48.28)	INC	108 (20.61)	145 (27.67)	BJP	76 (14.5)	87 (16.6)
82	AAP	226 (56.93)	BJP	52 (13.1)	174 (43.83)	INC	51 (12.85)	68 (17.13)
83	AAP	227 (45.4)	INC	98 (19.6)	129 (25.8)	SAD	72 (14.4)	103 (20.6)
84	AAP	241 (39.19)	INC	167 (27.15)	74 (12.04)	SAD	103 (16.75)	104 (16.91)
85	AAP	197 (29.49)	SAD(M)	187 (27.99)	10 (1.5)	INC	113 (16.92)	171 (25.6)
86	AAP	265 (43.95)	BJP	106 (17.58)	159 (26.37)	INC	81 (13.43)	151 (25.04)
87	AAP	300 (47.85)	INC	124 (19.78)	176 (28.07)	SAD	73 (11.64)	130 (20.73)
88	AAP	335 (59.61)	SAD	75 (13.35)	260 (46.26)	INC	60 (10.68)	92 (16.37)
89	AAP	252 (35.8)	INC	174 (24.72)	78 (11.08)	SAD	150 (21.31)	128 (18.18)
90	AAP	299 (49.92)	SAD	84 (14.02)	215 (35.9)	INC	73 (12.19)	143 (23.87)
91	AAP	248 (42.25)	INC	147 (25.04)	101 (17.21)	SAD	81 (13.8)	111 (18.91)
92	AAP	201 (38.21)	INC	172 (32.7)	29 (5.51)	SAD	68 (12.93)	85 (16.16)
93	AAP	317 (46.14)	INC	260 (37.85)	57 (8.29)	SAD(M)	41 (5.97)	69 (10.04)
94	INC	319 (42.65)	AAP	312 (41.71)	7 (0.94)	SAD(M)	34 (4.55)	83 (11.1)
95	AAP	243 (46.11)	SAD	118 (22.39)	125 (23.72)	INC	102 (19.35)	64 (12.14)
96	AAP	175 (41.97)	INC	121 (29.02)	54 (12.95)	SAD	55 (13.19)	66 (15.83)
97	AAP	250 (43.86)	INC	149 (26.14)	101 (17.72)	SAD	80 (14.04)	91 (15.96)
98	INC	132 (33.33)	AAP	116 (29.29)	16 (4.04)	SAD	98 (24.75)	50 (12.63)
99	AAP	162 (45.13)	INC	84 (23.4)	78 (21.73)	SAD(M)	47 (13.09)	66 (18.38)
100	AAP	265 (40.83)	INC	125 (19.26)	140 (21.57)	BJP	94 (14.48)	165 (25.42)
101	AAP	400 (46.35)	BJP	217 (25.14)	183 (21.21)	INC	103 (11.94)	143 (16.57)
102	AAP	197 (36.15)	INC	122 (22.39)	75 (13.76)	BJP	102 (18.72)	124 (22.75)
103	AAP	350 (50.8)	INC	130 (18.87)	220 (31.93)	BJP	86 (12.48)	123 (17.85)
104	AAP	122 (44.53)	INC	72 (26.28)	50 (18.25)	SAD	40 (14.6)	40 (14.6)
105	AAP	91 (50.84)	INC	36 (20.11)	55 (30.73)	SAD	20 (11.17)	32 (17.88)

Contd....

## Socio-Economic Amenities - Rural

### Access to Education Facilities

Particulars	Number of Villages (% of Population)				
	Available	Not Available	If Not Available (Distance of Nearest Facility)		
			A	B	C
Govt. Primary School	156 (98)	13 (2)	9 (1)	2 (0)	0 (0)
Private Primary School	6 (3)	163 (97)	1 (0)	0 (0)	0 (0)
Govt. Middle School	51 (43)	118 (57)	69 (34)	14 (7)	0 (0)
Private Middle School	4 (1)	165 (99)	21 (9)	10 (5)	0 (0)
Govt. Secondary School	22 (23)	147 (77)	82 (40)	50 (29)	0 (0)
Private Secondary School	1 (1)	168 (99)	5 (3)	9 (4)	0 (0)
Govt. Senior Secondary School	10 (11)	159 (89)	80 (39)	57 (37)	8 (4)
Private Senior Secondary School	1 (1)	168 (99)	4 (2)	8 (4)	0 (0)
Govt. Arts and Science Degree College	0 (0)	169 (100)	7 (4)	18 (9)	35 (19)
Private Arts and Science Degree College	0 (0)	169 (100)	3 (1)	55 (36)	51 (31)
Govt. Engineering College	0 (0)	169 (100)	7 (5)	18 (9)	30 (16)
Private Engineering College	0 (0)	169 (100)	4 (2)	55 (36)	55 (32)
Govt. Medicine College	0 (0)	169 (100)	0 (0)	0 (0)	152 (90)
Private Medicine College	0 (0)	169 (100)	0 (0)	0 (0)	17 (10)
Govt. Management Institute	0 (0)	169 (100)	7 (4)	18 (9)	44 (27)
Private Management Institute	0 (0)	169 (100)	3 (1)	55 (35)	42 (23)
Govt. Polytechnic	0 (0)	169 (100)	6 (3)	24 (12)	41 (25)
Private Polytechnic	0 (0)	169 (100)	3 (1)	50 (33)	45 (25)
Govt. Vocational Training School/ITI	0 (0)	169 (100)	4 (2)	13 (8)	139 (82)
Private Vocational Training School/ITI	0 (0)	169 (100)	0 (0)	4 (2)	9 (6)
Govt. Non Formal Training Centre	0 (0)	169 (100)	7 (4)	66 (41)	79 (47)
Private Non Formal Training Centre	0 (0)	169 (100)	1 (0)	6 (4)	10 (4)
Govt. School For Disabled	0 (0)	169 (100)	0 (0)	1 (0)	151 (92)
Private School For Disabled	0 (0)	169 (100)	0 (0)	0 (0)	17 (8)
Government Others	0 (0)	169 (100)	5 (2)	58 (37)	102 (58)
Private Others	0 (0)	169 (100)	0 (0)	0 (0)	4 (2)

Note : Distance A : Less than 5 km; B : Between 5-10 km; C : 10+ km.; Source : Data Analysis is based on 2011 Census.



## DISCLAIMER

The Terms of Use and Disclaimer of Datanet India Private Limited (hereinafter referred to as "Datanet") for use of this analysis report of **Fatehgarh Sahib Assembly Constituency (Fatehgarh Sahib Vidhan Sabha)** :-

1. **Assembly Factbook™** is a Registered Trade Mark owned by Datanet.
2. All the maps are sketched and graphical representation only and have not been drawn to the scale and also not to represent the actual geographical area or boundary of the unit.
3. The data for the aforesaid analysis is based on authentic sources and has been culled from the various publications of Census, CSO and NSSO for district and block level data, various central and state government departments, Central & State Elections Commissions and the concerned Returning Officers' releases, Electoral Rolls, Election results and allied publications, internal assessment, surveys, estimates and analysis. Therefore, certain adjustment of data at micro level may have been done to arrive closer to the macro data.
4. Data have been provided on an "As Is" and "As AVAILABLE" basis
5. The colours shown in the maps or diagram and charts of a particular party, alliance or AC are indicative and do not represent them.
6. This publication which includes maps, sheets, graphs and data would be the property under copyright of Datanet only. The user may use these for its internal study, analysis and research purposes. It's public display, re-selling or any commercial uses by the user are not allowed.
7. Datanet has taken due care and caution in compilation and processing of data and allied information, but does not guarantee the accuracy, adequacy or completeness of any information/analysis and will be not responsible for any errors or omissions or for the results obtained from the use of such information/analysis.
8. All the contents for the publication have been culled from various authentic sources and Datanet reasonably believes such sources to be reliable, but does not make any representations, express or implied as to the accuracy or fitness of use of such information. The information or contents of the information/analysis do not constitute advice and should not be relied upon in making (or refraining from making) any decision. Any reliance placed upon the information provided by Datanet is the sole responsibility and strictly at the user's risk.
9. In no event will Datanet be liable for any damages (including, without limitation, damages for loss of business projects, or loss of profits) arising in contract, tort or otherwise from the use of or inability to use any of its contents, or from any action taken (or refrained from being taken) as a result of using the analysis or any of its contents. Datanet its directors, owners, editors, officials, employees, distributor and agents or any associate will not be liable for any errors in the information contained or any consequences arising from the use of the contents of the provided information/analysis.
10. If any provision of these terms and conditions is held invalid or illegal or unenforceable for any reason by any court of competent jurisdiction, such provision shall be severed and the remainder of provisions of the terms and conditions shall continue in full force and effect as if the Term of Use had been executed with the invalid, illegal or unenforceable provision eliminated.
11. If there are any discrepancies in the information provided, please bring it to attention of Datanet for suitable rectification measures.

**Buy Online This Complete Book At  
Datanet India eBooks Store**

**[www.indiastatpublications.com](http://www.indiastatpublications.com)**

**or go directly at**

**[http://www.indiastatpublications.com/  
Assembly\\_factbook/Punjab/Fatehgarh\\_Sahib/  
Fatehgarh\\_Sahib](http://www.indiastatpublications.com/Assembly_factbook/Punjab/Fatehgarh_Sahib/Fatehgarh_Sahib)**

 **india**stat**elections**

ISBN : 978-93-5822-383-5



9 789358 223835