



Odisha

Assembly Factbook™

Jayadev Assembly Constituency



Key Electoral Data of Jayadev
Assembly Constituency (Vidhan Sabha)

Odisha

Assembly Factbook™

Jayadev Assembly Constituency



Jayadev Vidhan Sabha

Editor & Director

Dr. R.K. Thukral

Research Editor

Dr. Shafeeq Rahman

Compiled, Researched and Published by Datanet India Pvt. Ltd.

D-100, 1st Floor,

Okhla Industrial Area, Phase-I,
New Delhi- 110020.

Ph.: 91-11- 43580781-84

Email : support@indiastatpublications.com

Website : www.indiastatelections.com

Online Book Store :

www.indiastatpublications.com

Report No. : AFB/OD-111-0123

ISBN : 978-93-5301-899-3

First Edition : January, 2018

Sixth Updated Edition : January, 2023

Price : Rs. 11500/-

US\$ 310

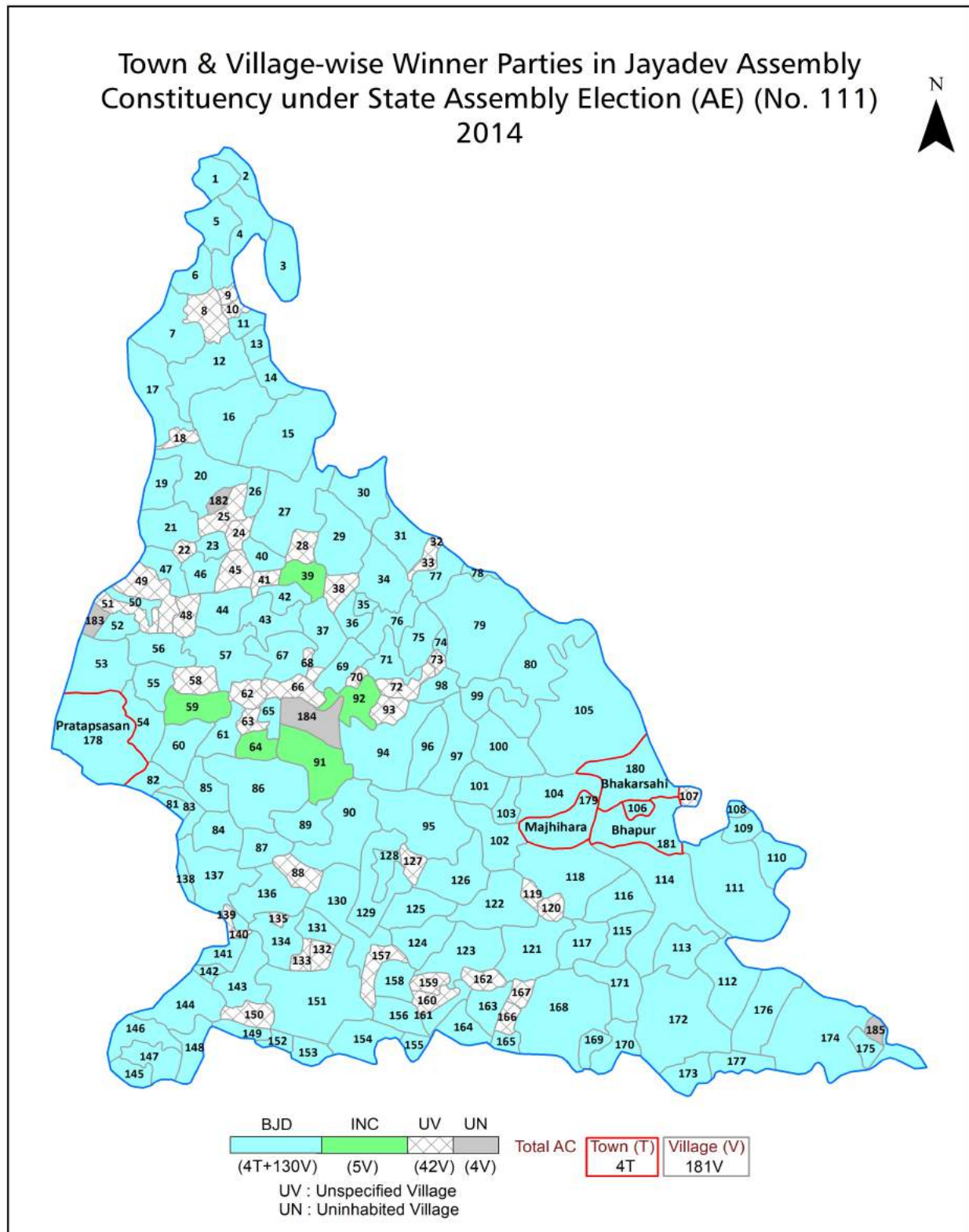
© Datanet India Pvt. Ltd.

All rights reserved. No part of this book may be reproduced, stored in a retrieval system or transmitted in any form or by any means, mechanical photocopying, photographing, scanning, recording or otherwise without the prior written permission of the publisher. Please refer to Disclaimer at page no. 199 for the use of this publication.

Printed in India

No.	Particulars	Page No.
	Introduction	
1	Assembly Constituency - (Vidhan Sabha) at a Glance Features of Assembly as per Delimitation Commission of India (2008)	1-2
	Location and Political Maps	
2	Location Map Boundaries of Assembly Constituency - (Vidhan Sabha) in District Boundaries of Assembly Constituency under Parliamentary Constituency - (Lok Sabha) Town & Village-wise Winner Parties- 2019-PE, 2019-AE, 2014-PE, 2014-AE, 2009-PE and 2009-AE	3-11
	Administrative Setup (2011)	
3	District Sub-district Towns Villages Inhabited Villages Uninhabited Villages Village Panchayat Intermediate Panchayat	12-22
	Demographics (2011)	
4	Population Households Rural/Urban Population Towns and Villages by Population Size Sex Ratio (Total & 0-6 Years) Religious Population Social Population Literacy Rate	23-24
	Electoral Features	
5	Important Dates of Last Elections Held Electors by Gender Service Electors Voters Voters Turnout Polling Stations & Average Number of Electors per Polling Station Electors by Age Group Present Elected Representatives	25-30
	Historical Summary Election Results	
6	Vote Share of Major Parties Winning Margin (Number & Percentage) Polarity of Parties Summary Result of Assembly Segment of Parliamentary Elections 2019, 2014 and 2009 Summary Result of Assembly Elections 2019, 2014 and 2009	31-40
	Polling Station Level Election Results	
7	Name and Number of Polling Station 2019-PE, 2019-AE, 2014-PE, 2014-AE, 2009-PE and 2009-AE Polling Station-wise Electors, Voters & Voters Turnout 2019-PE, 2019-AE, 2014-PE, 2014-AE, 2009-PE and 2009-AE Polling Station wise Elections Results 2019-PE, 2019-AE, 2014-PE, 2014-AE, 2009-PE and 2009-AE	41-178
	Share of Assembly Constituency	
8	Share of Assembly Constituency - (Vidhan Sabha) in State, District and Parliamentary Constituency - (Lok Sabha)	179
	Socio-Economic Amenities (2011)	
9	Access to Administrative Units Agricultural, Manufacturing and Industrial Commodities Demographic Indicators Education Health & Manpower Drinking Water Supply Sanitation Entertainment and Recreations Infrastructure Power Food Allocation Distribution and Marketing of Agriculture Commodities Infrastructure Transport and Road Infrastructure Communication Banking and Financial Services Land Use Irrigation Source	181-195
10	Abbreviation & Sources	196-197
11	Disclaimer	199

Location & Political Map



Administrative Setup

List of Village Panchayat & Intermediate Panchayat (Block) Name - 2011

Village Name	Village Panchayat Name	Intermediate Panchayat Name
Abhaymukhi	Deulidharpur	Balipatna
Achyutpur	Somanasasan	Balipatna
Adalabad	Somanasasan	Balipatna
Aitalanga	Turintira	Balipatna
Alarpur	Satyabhamapur	Balianta
Alisibindha	Rajas	Balipatna
Alisisahabad	Rajas	Balipatna
Alisisasan	Rajas	Balipatna
Aloi	Marthapur	Balipatna
Amanakud	Amanakud	Balipatna
Ambadiha	Deulidharpur	Balipatna
Anantapur	Jagannathpur	Balianta
Andilo	Balianta	Balianta
Anjira	Purunapradhan	Balianta
Anthuari	Prataprudrapur	Balianta
Arapada	Kurunjipur	Balipatna
Arilo	Amanakud	Balipatna
Aringol	Bainchua	Balianta
Atala	Balianta	Balianta
Athantar	Garedipanchan	Balipatna
Badachhelipatana	Kakarudrapur	Balianta
Badala Sasan	Kurunjipur	Balipatna
Badalapara	Rajas	Balipatna
Badalapaschima Khanda	Kurunjipur	Balipatna
Bagalpur	Turintira	Balipatna
Baindol	Balianta	Balianta
Balabhadrapur	Kakarudrapur	Balianta
Balianta	Balianta	Balianta
Baligundi	Sarakana	Balianta

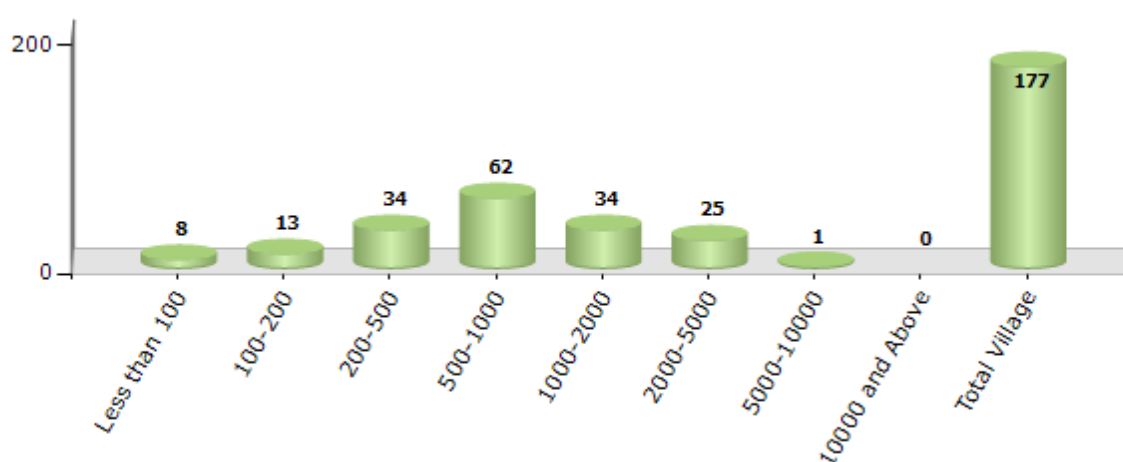
Contd....

Demographic

Number of Villages by Population Size - 2011

Less than 100	100-200	200-500	500-1000	1000-2000	2000-5000	5000-10000	10000 and Above	Total Village
8	13	34	62	34	25	1	0	177

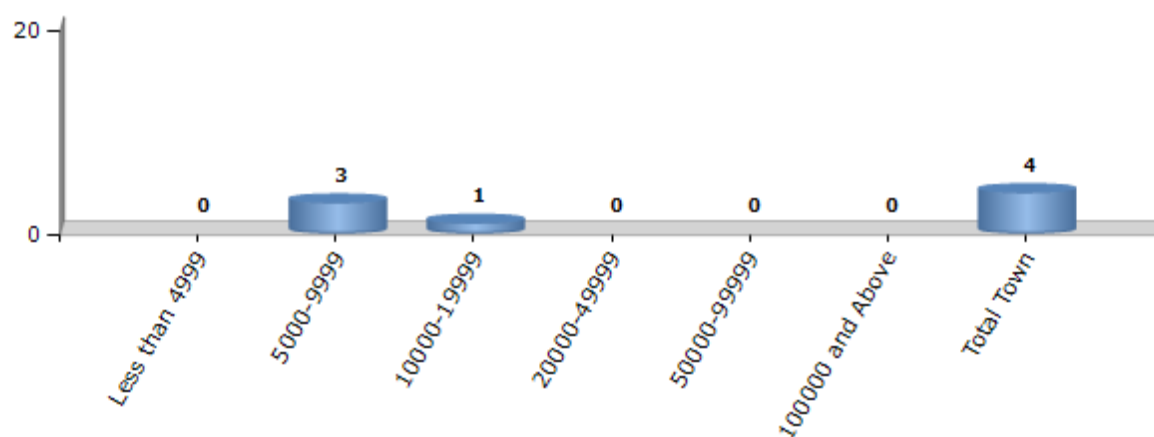
Number of Villages by Population Size - 2011



Number of Towns by Population Size - 2011

Less than 4999	5000-9999	10000-19999	20000-49999	50000-99999	100000 and Above	Total Town
0	3	1	0	0	0	4

Number of Towns by Population Size - 2011

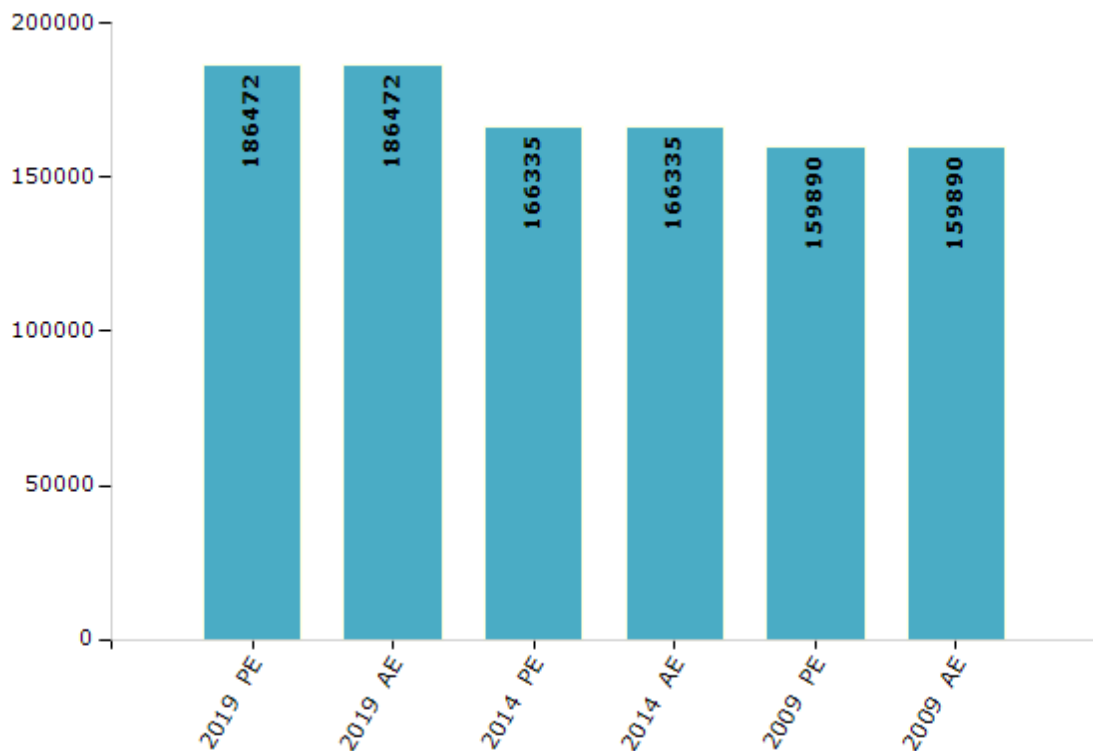


Electoral Features

Electors by Male & Female

Year	Male	Female	Others	Total	Year	Male	Female	Others	Total
2019 PE	96547	89897	28	186472	1990 AE	-	-	-	-
2019 AE	96547	89897	28	186472	1985 AE	-	-	-	-
2014 PE	88403	77928	4	166335	1980 AE	-	-	-	-
2014 AE	88403	77928	4	166335	1977 AE	-	-	-	-
2009 PE	84002	75888	-	159890	1974 AE	-	-	-	-
2009 AE	84002	75888	-	159890	1971 AE	-	-	-	-
2004 PE	-	-	-	-	1967 AE	-	-	-	-
2004 AE	-	-	-	-	1961 AE	-	-	-	-
2000 AE	-	-	-	-	1957 AE	-	-	-	-
1999 PE	-	-	-	-	1952 AE	-	-	-	-
1995 AE	-	-	-	-					

Number of Electors



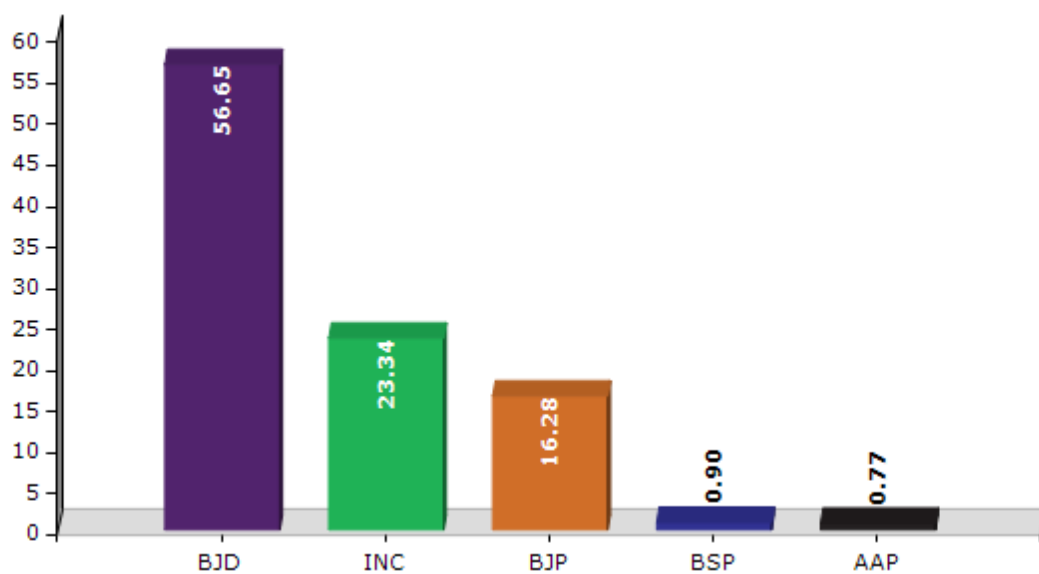
Note : AE : Assembly Election, PE : Assembly Segment of Parliamentary Election

Historical Summary Election Results

Summary Result of Assembly Election - 2014

Candidate Name	Party	Votes	Votes %
Sashi Bhusan Behera	BJD	69637	56.65
Benudhar Bhoi	INC	28686	23.34
Basanta Kumar Nayak	BJP	20007	16.28
Dibakar Das	BSP	1105	0.9
Prafulla Chandra Behera	AAP	950	0.77
Satya Priya Behera	IND	669	0.54
Bijay Kumar Bhoi	SP	375	0.31
Bishnu Charan Malik	AITC	352	0.29
	NOTA	1138	0.93

Votes Percentage of Top Parties - 2014



Polling Station Level Election Results

Number and Name of Polling Stations (PS) (2019 AE)

Number of Polling Stations	Name of Polling Stations	Number of Polling Stations	Name of Polling Stations
1	Janmenjayapur	22	Benupur-4
2	Anantapur	23	Ramachandrapur-1
3	Bhimpur	24	Ramachandrapur-2
4	Jagannathpur	25	Bhainchuan-1
5	Gohal	26	Bhainchuan-2
6	Jayarasaran-1	27	Bhainchuan-3
7	Jayarasaran-2	28	Bhainchuan-4
8	Saleswar	29	Indrapal
9	Andilo	30	Subhalo
10	Tiranapada	31	Bhingarpur-1
11	Balianta(Matikota)-1	32	Bhingarpur-2
12	Balianta(Matikota)-1	33	Bhingarpur-3
13	Balianta-2	34	Bhingarpur-4
14	Balianta-3	35	Jitikarsuanlo-1
15	Balianta-3	36	Jitikarsuanlo-2
16	Balianta-4	37	Paribasudeipur
17	Bhubanapur	38	Bentapur-1
18	Dhamilo	39	Bentapur-2
19	Benupur-1	40	Brahmansarang
20	Benupur-2	41	Dandilo
21	Benupur-3	42	Dandilo-1

Contd....

Polling Station Level Election Results

Polling Station-wise Votes Secured by Overall Top Five Parties in Jayadev Assembly in Assembly Election (AE) under Bhubaneswar Parliamentary Constituency in Odisha (2019)

Number of Polling Station	Winner - Arabinda Dhali (BJD)	Runner-up - Naba Kishor Mallick (IND)	3rd - Narendranath Nayak (BJP)	4th - Pabitra Mohan Bhoi (BSP)	5th - Raghab Chandra Sethi (IND)	NOTA	Other	Total Votes Secured
36	217	164	61	3	0	0	4	449
37	255	245	141	8	0	3	2	654
38	388	202	156	2	0	6	6	760
39	438	189	147	11	3	10	7	805
40	211	302	184	19	3	3	13	735
41	221	159	150	2	1	1	2	536
42	352	130	74	4	5	2	6	573
43	273	296	48	10	0	4	4	635
44	NV	NV	NV	NV	NV	NV	NV	NV
45	264	195	155	7	3	6	4	634
46	205	287	43	1	2	3	4	545
47	202	227	87	2	5	3	5	531
48	150	40	130	4	5	6	3	338
49	261	247	119	6	9	1	8	651
50	153	152	64	5	0	9	6	389
51	245	189	108	11	2	1	11	567
52	303	236	92	9	1	7	10	658
53	96	69	73	1	2	4	5	250
54	376	341	138	7	1	6	16	885
55	120	195	55	2	0	0	2	374
56	263	146	185	8	2	2	9	615
57	144	99	83	3	2	2	2	335
58	274	374	188	7	11	14	15	883
59	289	128	112	7	2	4	7	549
60	179	74	99	1	3	6	0	362
61	194	205	69	1	1	0	4	474
62	263	142	118	2	2	4	4	535
63	191	241	98	21	2	8	9	570
64	377	108	166	4	2	3	8	668
65	305	285	93	1	0	3	1	688
66	213	383	50	6	1	1	2	656
67	220	255	104	12	3	10	7	611
68	177	212	71	3	0	4	7	474
69	98	140	33	2	0	2	3	278
70	336	275	241	4	4	6	16	882

Contd....

Polling Station Level Election Results

Winner, Runner-up and 3rd Party Position & Winning Margin According to Polling Stations in Jayadev Assembly in Assembly Election (AE) under Bhubaneswar Parliamentary Constituency in Odisha (2019)

Polling Station Number	Winner Party	Winner Votes (%)	Runner-up Party	Runner-up Votes (%)	Winning Margin Votes (%)	Third Party	Third Party Votes (%)	Other Votes (%)
71	IND (NKM)	217 (46.07)	BJD	151 (32.06)	66 (14.01)	BJP	82 (17.41)	21 (4.46)
72	BJD	443 (60.27)	BJP	145 (19.73)	298 (40.54)	IND (NKM)	138 (18.78)	9 (1.22)
73	BJD	405 (52.67)	IND (NKM)	190 (24.71)	215 (27.96)	BJP	156 (20.29)	18 (2.34)
74	IND (NKM)	247 (34.4)	BJD	234 (32.59)	13 (1.81)	BJP	214 (29.81)	23 (3.2)
75	BJD	263 (63.22)	IND (NKM)	74 (17.79)	189 (45.43)	BJP	74 (17.79)	5 (1.2)
76	IND (NKM)	410 (47.34)	BJD	318 (36.72)	92 (10.62)	BJP	120 (13.86)	18 (2.08)
77	IND (NKM)	314 (49.68)	BJD	267 (42.25)	47 (7.43)	BJP	41 (6.49)	10 (1.58)
78	BJD	223 (46.65)	BJP	142 (29.71)	81 (16.94)	IND (NKM)	97 (20.29)	16 (3.35)
79	BJD	330 (62.62)	IND (NKM)	179 (33.97)	151 (28.65)	BJP	14 (2.66)	4 (0.76)
80	BJD	244 (42.29)	IND (NKM)	206 (35.7)	38 (6.59)	BJP	109 (18.89)	18 (3.12)
81	BJD	218 (56.92)	BJP	87 (22.72)	131 (34.2)	IND (NKM)	59 (15.4)	19 (4.96)
82	BJD	322 (51.94)	BJP	205 (33.06)	117 (18.88)	IND (NKM)	73 (11.77)	20 (3.23)
83	BJD	324 (48.36)	BJP	172 (25.67)	152 (22.69)	IND (NKM)	143 (21.34)	31 (4.63)
84	BJD	201 (44.87)	BJP	138 (30.8)	63 (14.07)	IND (NKM)	92 (20.54)	17 (3.79)
85	IND (NKM)	205 (42.62)	BJD	141 (29.31)	64 (13.31)	BJP	113 (23.49)	22 (4.57)
86	IND (NKM)	231 (43.34)	BJP	146 (27.39)	85 (15.95)	BJD	145 (27.2)	11 (2.06)
87	IND (NKM)	235 (39.36)	BJD	223 (37.35)	12 (2.01)	BJP	121 (20.27)	18 (3.02)
88	IND (NKM)	330 (62.15)	BJD	99 (18.64)	231 (43.51)	BJP	74 (13.94)	28 (5.27)
89	BJD	373 (57.21)	BJP	136 (20.86)	237 (36.35)	IND (NKM)	109 (16.72)	34 (5.21)
90	BJD	314 (51.82)	IND (NKM)	139 (22.94)	175 (28.88)	BJP	138 (22.77)	15 (2.48)
91	BJD	103 (43.1)	IND (NKM)	91 (38.08)	12 (5.02)	BJP	44 (18.41)	1 (0.42)
92	BJD	381 (52.48)	IND (NKM)	181 (24.93)	200 (27.55)	BJP	132 (18.18)	32 (4.41)
93	BJD	439 (47.46)	IND (NKM)	342 (36.97)	97 (10.49)	BJP	125 (13.51)	19 (2.05)
94	BJD	266 (37.57)	IND (NKM)	248 (35.03)	18 (2.54)	BJP	154 (21.75)	40 (5.65)
95	IND (NKM)	290 (39.35)	BJD	245 (33.24)	45 (6.11)	BJP	156 (21.17)	46 (6.24)
96	BJD	324 (42.3)	IND (NKM)	215 (28.07)	109 (14.23)	BJP	206 (26.89)	21 (2.74)
97	IND (NKM)	339 (38.83)	BJD	321 (36.77)	18 (2.06)	BJP	182 (20.85)	31 (3.55)
98	BJD	265 (43.59)	IND (NKM)	233 (38.32)	32 (5.27)	BJP	103 (16.94)	7 (1.15)
99	IND (NKM)	359 (59.34)	BJD	162 (26.78)	197 (32.56)	BJP	53 (8.76)	31 (5.12)
100	BJD	222 (59.2)	BJP	103 (27.47)	119 (31.73)	IND (NKM)	50 (13.33)	0 (0)
101	IND (NKM)	450 (45.69)	BJD	306 (31.07)	144 (14.62)	BJP	210 (21.32)	19 (1.93)
102	BJD	469 (39.71)	IND (NKM)	377 (31.92)	92 (7.79)	BJP	257 (21.76)	78 (6.6)
103	BJD	118 (57.28)	BJP	56 (27.18)	62 (30.1)	IND (NKM)	29 (14.08)	3 (1.46)
104	BJD	323 (60.6)	BJP	127 (23.83)	196 (36.77)	IND (NKM)	62 (11.63)	21 (3.94)
105	BJD	250 (50.92)	IND (NKM)	125 (25.46)	125 (25.46)	BJP	97 (19.76)	19 (3.87)

Contd....

Socio-Economic Amenities - Rural

Access to Education Facilities

Particulars	Number of Villages (% of Population)				
	Available	Not Available	If Not Available (Distance of Nearest Facility)		
			A	B	C
Govt. Primary School	142 (94)	35 (6)	31 (5)	0 (0)	0 (0)
Private Primary School	19 (19)	158 (81)	0 (0)	0 (0)	0 (0)
Govt. Middle School	87 (76)	90 (24)	35 (11)	50 (12)	2 (0)
Private Middle School	14 (13)	163 (87)	1 (0)	0 (0)	0 (0)
Govt. Secondary School	36 (42)	141 (58)	84 (32)	26 (11)	0 (0)
Private Secondary School	13 (13)	164 (87)	21 (9)	3 (2)	0 (0)
Govt. Senior Secondary School	9 (9)	168 (91)	30 (15)	31 (12)	20 (11)
Private Senior Secondary School	1 (1)	176 (99)	25 (16)	54 (32)	7 (3)
Govt. Arts and Science Degree College	2 (3)	175 (97)	27 (18)	56 (29)	26 (12)
Private Arts and Science Degree College	1 (2)	176 (98)	3 (1)	43 (23)	19 (12)
Govt. Engineering College	1 (0)	176 (100)	12 (13)	46 (22)	117 (63)
Private Engineering College	2 (2)	175 (98)	0 (0)	0 (0)	0 (0)
Govt. Medicine College	0 (0)	177 (100)	0 (0)	0 (0)	20 (13)
Private Medicine College	0 (0)	177 (100)	3 (3)	33 (22)	121 (62)
Govt. Management Institute	0 (0)	177 (100)	1 (0)	11 (7)	153 (80)
Private Management Institute	0 (0)	177 (100)	4 (7)	8 (7)	0 (0)
Govt. Polytechnic	0 (0)	177 (100)	1 (0)	10 (4)	82 (46)
Private Polytechnic	0 (0)	177 (100)	0 (0)	6 (4)	54 (33)
Govt. Vocational Training School/ITI	0 (0)	177 (100)	4 (2)	23 (12)	28 (16)
Private Vocational Training School/ITI	2 (1)	175 (99)	20 (9)	40 (20)	35 (25)
Govt. Non Formal Training Centre	0 (0)	177 (100)	0 (0)	12 (4)	50 (28)
Private Non Formal Training Centre	0 (0)	177 (100)	0 (0)	1 (1)	27 (16)
Govt. School For Disabled	0 (0)	177 (100)	10 (4)	29 (13)	67 (38)
Private School For Disabled	0 (0)	177 (100)	0 (0)	2 (0)	41 (28)
Government Others	0 (0)	177 (100)	0 (0)	0 (0)	0 (0)
Private Others	0 (0)	177 (100)	0 (0)	0 (0)	1 (0)

Note : Distance A : Less than 5 km; B : Between 5-10 km; C : 10+ km.; Source : Data Analysis is based on 2011 Census.

DISCLAIMER

The Terms of Use and Disclaimer of Datanet India Private Limited (hereinafter referred to as "Datanet") for use of this analysis report of **Jayadev Assembly Constituency (Jayadev Vidhan Sabha)** :-

1. **Assembly Factbook™** is a Registered Trade Mark owned by Datanet.
2. All the maps are sketched and graphical representation only and have not been drawn to the scale and also not to represent the actual geographical area or boundary of the unit.
3. The data for the aforesaid analysis is based on authentic sources and has been culled from the various publications of Census, CSO and NSSO for district and block level data, various central and state government departments, Central & State Elections Commissions and the concerned Returning Officers' releases, Electoral Rolls, Election results and allied publications, internal assessment, surveys, estimates and analysis. Therefore, certain adjustment of data at micro level may have been done to arrive closer to the macro data.
4. Data have been provided on an "As Is" and "As AVAILABLE" basis
5. The colours shown in the maps or diagram and charts of a particular party, alliance or AC are indicative and do not represent them.
6. This publication which includes maps, sheets, graphs and data would be the property under copyright of Datanet only. The user may use these for its internal study, analysis and research purposes. It's public display, re-selling or any commercial uses by the user are not allowed.
7. Datanet has taken due care and caution in compilation and processing of data and allied information, but does not guarantee the accuracy, adequacy or completeness of any information/analysis and will be not responsible for any errors or omissions or for the results obtained from the use of such information/analysis.
8. All the contents for the publication have been culled from various authentic sources and Datanet reasonably believes such sources to be reliable, but does not make any representations, express or implied as to the accuracy or fitness of use of such information. The information or contents of the information/analysis do not constitute advice and should not be relied upon in making (or refraining from making) any decision. Any reliance placed upon the information provided by Datanet is the sole responsibility and strictly at the user's risk.
9. In no event will Datanet be liable for any damages (including, without limitation, damages for loss of business projects, or loss of profits) arising in contract, tort or otherwise from the use of or inability to use any of its contents, or from any action taken (or refrained from being taken) as a result of using the analysis or any of its contents. Datanet its directors, owners, editors, officials, employees, distributor and agents or any associate will not be liable for any errors in the information contained or any consequences arising from the use of the contents of the provided information/analysis.
10. If any provision of these terms and conditions is held invalid or illegal or unenforceable for any reason by any court of competent jurisdiction, such provision shall be severed and the remainder of provisions of the terms and conditions shall continue in full force and effect as if the Term of Use had been executed with the invalid, illegal or unenforceable provision eliminated.
11. If there are any discrepancies in the information provided, please bring it to attention of Datanet for suitable rectification measures.

Buy Online This Complete Book At
Datanet India eBooks Store

www.indiastatpublications.com

or go directly at

[http://www.indiastatpublications.com/
Assembly_factbook/Odisha/Bhubaneswar/ Jayadev](http://www.indiastatpublications.com/Assembly_factbook/Odisha/Bhubaneswar/Jayadev)



i indiastat**elections**

ISBN : 978-93-5301-899-3



9 789353 018993