



Odisha

# Assembly Factbook™

Chandabali Assembly Constituency



Key Electoral Data of Chandabali  
Assembly Constituency (Vidhan Sabha)



**indiastat**publications

Odisha

# **Assembly Factbook™**

Chandabali Assembly Constituency



Chandabali Vidhan Sabha

## **Editor & Director**

Dr. R.K. Thukral

## **Research Editor**

Dr. Shafeeq Rahman

## **Compiled, Researched and Published by Datanet India Pvt. Ltd.**

D-100, 1st Floor,

Okhla Industrial Area, Phase-I,  
New Delhi- 110020.

Ph.: 91-11- 43580781-84

Email : support@indiastatpublications.com

Website : www.indiastatelections.com

## **Online Book Store :**

www.indiastatpublications.com

**Report No. :** AFB/OD-047-0123

**ISBN :** 978-93-5301-889-4

**First Edition :** January, 2018

**Sixth Updated Edition :** January, 2023

**Price :** Rs. 11500/-

US\$ 310

**© Datanet India Pvt. Ltd.**

All rights reserved. No part of this book may be reproduced, stored in a retrieval system or transmitted in any form or by any means, mechanical photocopying, photographing, scanning, recording or otherwise without the prior written permission of the publisher. Please refer to Disclaimer at page no. 240 for the use of this publication.

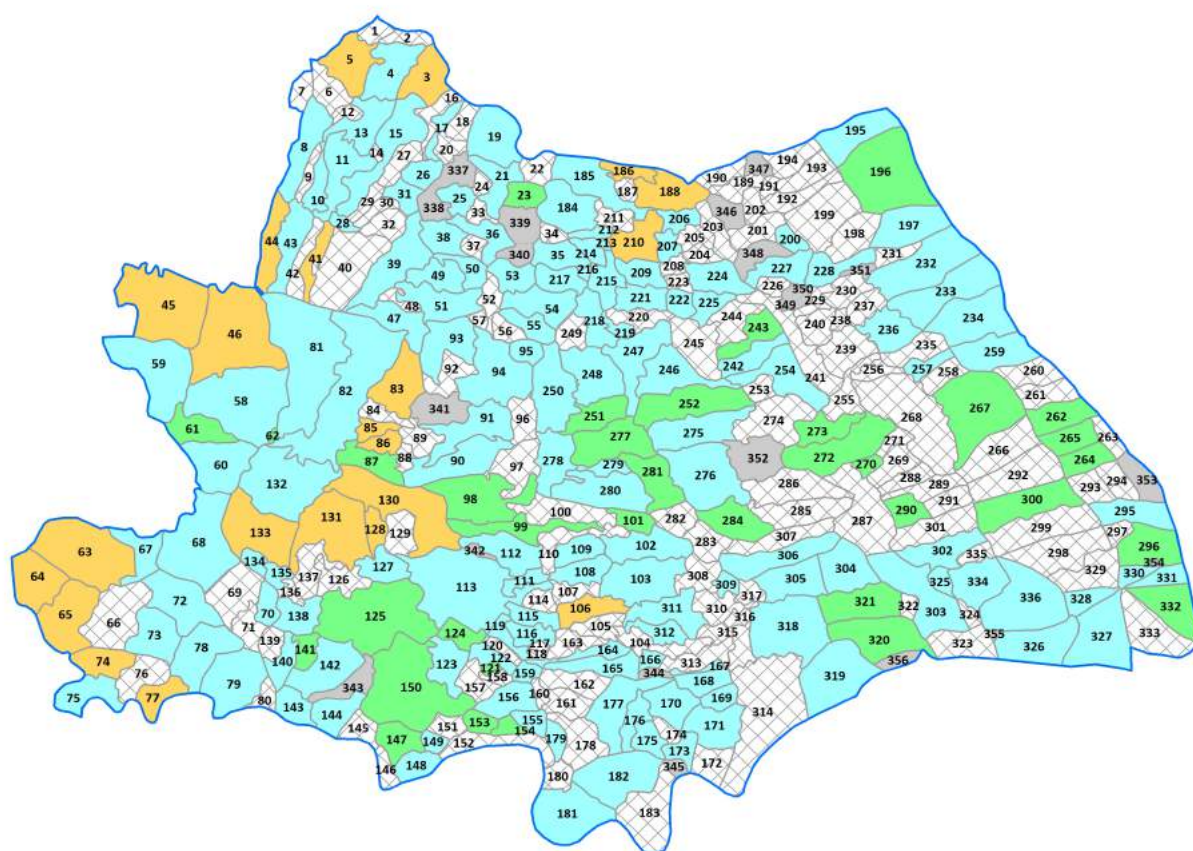
Printed in India

No.	Particulars	Page No.
	<b>Introduction</b>	
1	Assembly Constituency - (Vidhan Sabha) at a Glance   Features of Assembly as per Delimitation Commission of India (2008)	1-2
	<b>Location and Political Maps</b>	
2	Location Map   Boundaries of Assembly Constituency - (Vidhan Sabha) in District   Boundaries of Assembly Constituency under Parliamentary Constituency - (Lok Sabha)   Village-wise Winner Parties- 2019-PE, 2019-AE, 2014-PE, 2014-AE, 2009-PE and 2009-AE	3-11
	<b>Administrative Setup (2011)</b>	
3	District   Sub-district   Towns   Villages   Inhabited Villages   Uninhabited Villages   Village Panchayat   Intermediate Panchayat	12-28
	<b>Demographics (2011)</b>	
4	Population   Households   Rural/Urban Population   Villages by Population Size   Sex Ratio (Total & 0-6 Years)   Religious Population   Social Population   Literacy Rate	29-30
	<b>Electoral Features</b>	
5	Important Dates of Last Elections Held   Electors by Gender   Service Electors   Voters   Voters Turnout   Polling Stations & Average Number of Electors per Polling Station   Electors by Age Group   Present Elected Representatives	31-36
	<b>Historical Summary Election Results</b>	
6	Vote Share of Major Parties   Winning Margin (Number & Percentage)   Polarity of Parties   Summary Result of Assembly Segment of Parliamentary Elections 2019, 2014, 2009, 2004 and 1999   Summary Result of Assembly Elections 2019, 2014, 2009, 2004, 2000, 1995, 1990, 1985, 1980, 1977, 1974, 1971, 1967, 1961, 1957 and 1952	37-61
	<b>Polling Station Level Election Results</b>	
7	Name and Number of Polling Station 2019-PE, 2019-AE, 2014-PE, 2014-AE, 2009-PE and 2009-AE   Polling Station-wise Electors, Voters & Voters Turnout 2019-PE, 2019-AE, 2014-PE, 2014-AE, 2009-PE and 2009-AE   Polling Station wise Elections Results 2019-PE, 2019-AE, 2014-PE, 2014-AE, 2009-PE and 2009-AE	62-219
	<b>Share of Assembly Constituency</b>	
8	Share of Assembly Constituency - (Vidhan Sabha) in State, District and Parliamentary Constituency - (Lok Sabha)	220
	<b>Socio-Economic Amenities (2011)</b>	
9	Access to Administrative Units   Agricultural, Manufacturing and Industrial Commodities   Demographic Indicators   Education   Health & Manpower   Drinking Water Supply   Sanitation   Entertainment and Recreations Infrastructure   Power   Food Allocation Distribution and Marketing of Agriculture Commodities Infrastructure   Transport and Road Infrastructure   Communication   Banking and Financial Services   Land Use   Irrigation Source	222-236
10	<b>Abbreviation &amp; Sources</b>	237-238
11	<b>Disclaimer</b>	240



## Location & Political Map

Village-wise Winner Parties in Chandabali Assembly  
Constituency under State Assembly Election (AE) (No. 47)  
2014



BJD	BJP	INC	UV	UN	Total AC	Village (V)
(142V)	(22V)	(35V)	(137V)	(20V)		

UV : Unspecified Village  
UN : Uninhabited Village

## Administrative Setup

### List of Village Panchayat & Intermediate Panchayat (Block) Name - 2011

Village Name	Village Panchayat Name	Intermediate Panchayat Name
Alala	Jamjudi	Tihidi
Amarnagar	Dosinga	Chandabali
Ambiligan	Bijayanagar	Chandabali
Ambola	Tentulidihi	Chandabali
Amrutapur	Jamjudi	Tihidi
Anandapur	Panchutikiri	Chandabali
Anantapur	Jamjudi	Tihidi
Andiapat	Totapada	Chandabali
Ankapada	Totapada	Chandabali
Anugrahapur	Ghatapur	Chandabali
Aradi	Aradi	Chandabali
Arjunbindha	Daulatpur	Tihidi
Badaharipur	Chandabali	Chandabali
Badaitagotha	Nalagunda	Chandabali
Badanahunipal	Sahapur	Tihidi
Badaostia	Badaostia	Chandabali
Badapimpala	Karanpali	Chandabali
Badarupa	Nalagohira	Chandabali
Badasamukavedi	Panchutikiri	Chandabali
Badasingpur	Madhapur	Chandabali
Badatilanchi	Nalagohira	Chandabali
Baghakolha	Panchutikiri	Chandabali
Baghanata	Orasahi	Chandabali
Baharpal	Rajnagar	Tihidi
Bahu	Utukuda	Chandabali
Baibal	Daulatpur	Tihidi
Baincha	Karanjamal	Chandabali
Bajarapur	Gopinathpur	Chandabali
Bajarapur	Karanjamal	Chandabali

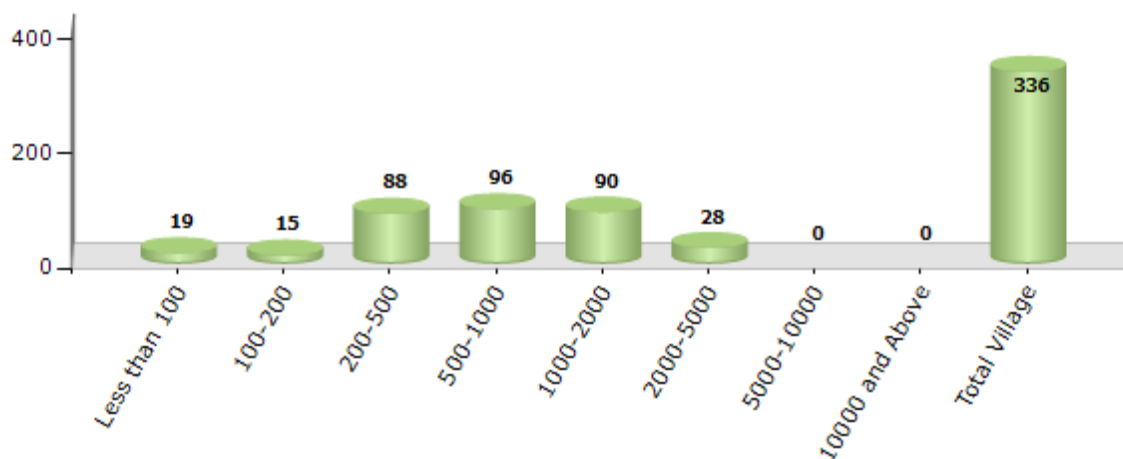
Contd....

## Demographic

### Number of Villages by Population Size - 2011

Less than 100	100-200	200-500	500-1000	1000-2000	2000-5000	5000-10000	10000 and Above	Total Village
19	15	88	96	90	28	0	0	336

Number of Villages by Population Size - 2011



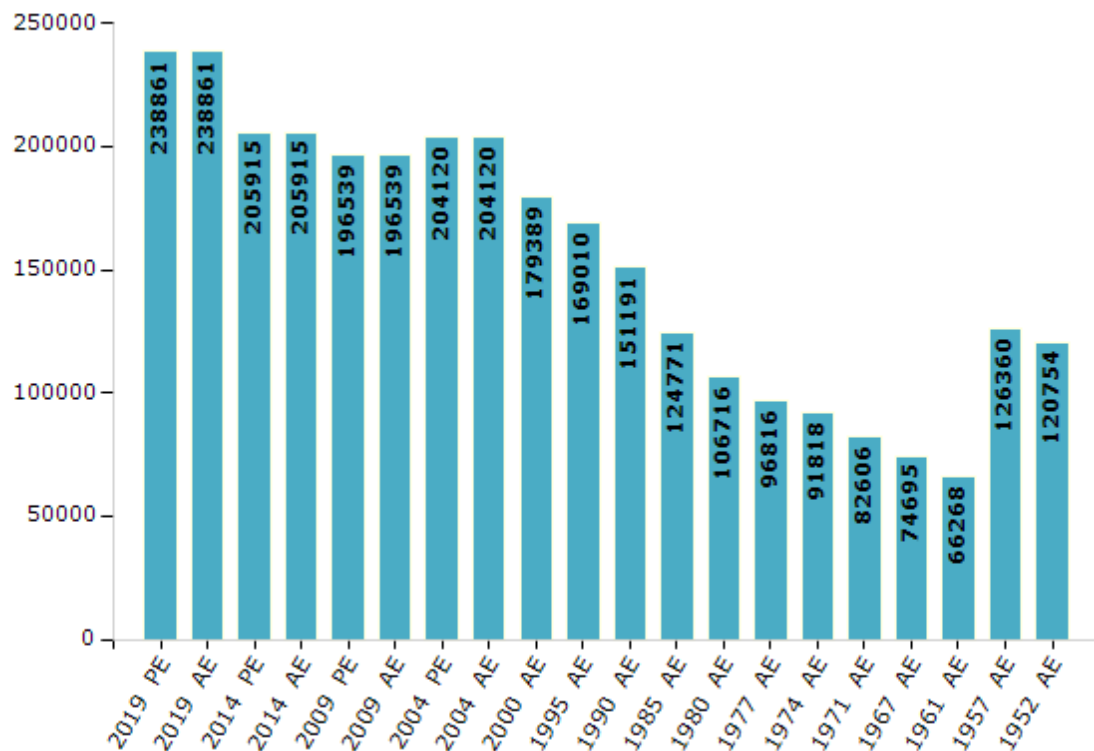
## Electoral Features

### Electors by Male & Female

Year	Male	Female	Others	Total
2019 PE	125850	112996	15	238861
2019 AE	125850	112996	15	238861
2014 PE	110288	95623	4	205915
2014 AE	110288	95623	4	205915
2009 PE	102687	93852	-	196539
2009 AE	102687	93852	-	196539
2004 PE	104231	99889	-	204120
2004 AE	104231	99889	-	204120
2000 AE	92094	87295	-	179389
1999 PE	-	-	-	-
1995 AE	88303	80707	-	169010

Year	Male	Female	Others	Total
1990 AE	81891	69300	-	151191
1985 AE	68317	56454	-	124771
1980 AE	57703	49013	-	106716
1977 AE	52745	44071	-	96816
1974 AE	59433	32385	-	91818
1971 AE	43828	38778	-	82606
1967 AE	74695	0	-	74695
1961 AE	66268	0	-	66268
1957 AE	126360	0	-	126360
1952 AE	-	-	-	120754

Number of Electors



Note : AE : Assembly Election, PE : Assembly Segment of Parliamentary Election

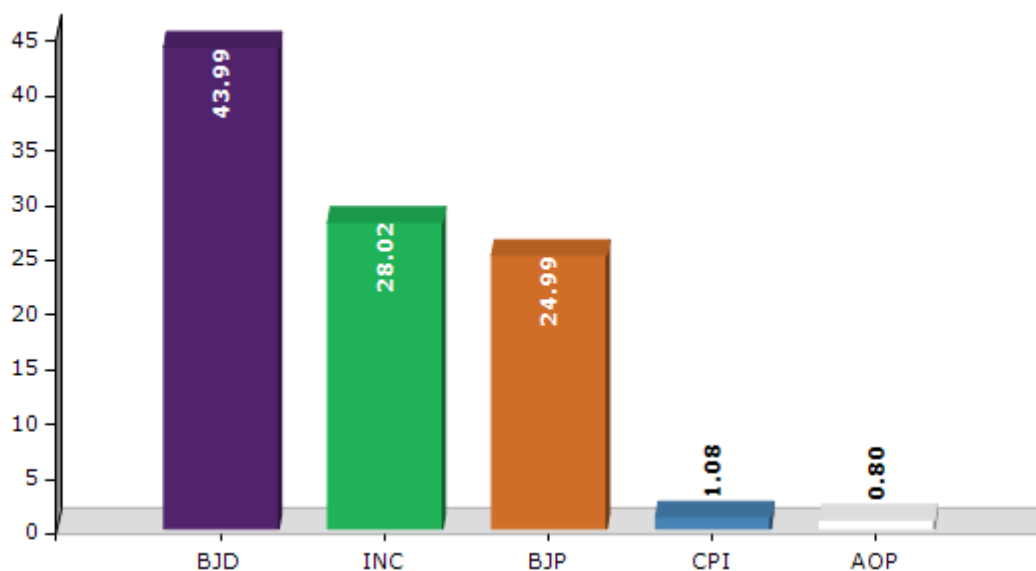


## Historical Summary Election Results

### Summary Result of Assembly Election - 2014

Candidate Name	Party	Votes	Votes %
Byomkesh Ray	BJD	68557	43.99
Amiya Kumar Mahapatra	INC	43674	28.02
Manmohan Samal	BJP	38952	24.99
Upendra Kumar Roul	CPI	1687	1.08
Biswakeshari Mohanty	AOP	1249	0.8
Gangadhar Bal	SP	426	0.27
Samarendra Bal	CPI(ML)(L)	345	0.22
Debadutta Mohanty	AAP	257	0.16
Ranjan Panda	OJM	173	0.11
	NOTA	539	0.35

Votes Percentage of Top Parties - 2014



## Polling Station Level Election Results

### Number and Name of Polling Stations (PS) (2019 AE)

Number of Polling Stations	Name of Polling Stations	Number of Polling Stations	Name of Polling Stations
1	Bangalidapa	22	Malapur
2	Taladapa	23	Chandrakatabindha
3	Nuabandh	24	Daulatapur
4	Madhupur	25	Daulatpur
5	Gobindpur-1	26	Chandrakatabindha
6	Gobindpur-2	27	Kasipur
7	Kruttibasapur	28	Japharabad
8	Kuanrachatar	29	Sahapur
9	Tiadisahi	30	Khedarapur
10	Tiadisahi	31	Bamanabindha
11	Barasar	32	Bamanabindha(Part)
12	Hengupati-1	33	Bamanabindha(Part)-1
13	Hengupati-2	34	Haripur
14	Ghatapur	35	Kabirapur
15	Ghatapur(P)	36	Kandaragadia-1
16	Khadijan	37	Kandaragadia-2
17	Baharapal(Part)	38	Alal
18	Charitaraph	39	Harasinghpur
19	Samantarayapur	40	Kanapur
20	Barabatia	41	Jhinkiria
21	Padhisahi	42	Kanapur

Contd....

## Polling Station Level Election Results

### Polling Station-wise Votes Secured by Overall Top Five Parties in Chandabali Assembly in Assembly Election (AE) under Bhadrak Parliamentary Constituency in Odisha (2019)

Number of Polling Station	Winner - Byomakesh Ray (BJD)	Runner-up - Manmohan Samal (BJP)	3rd - Digambar Das (INC)	4th - Ajaya Kumar Mahalik (BSP)	5th - Jayanti Biswal (CPI(ML) (L))	NOTA	Other	Total Votes Secured
36	355	177	41	3	3	1	1	581
37	490	205	69	4	7	2	3	780
38	209	143	61	0	0	0	0	413
39	245	341	110	9	4	2	0	711
40	264	438	176	5	5	3	2	893
41	285	311	3	2	3	5	2	611
42	240	157	35	2	1	1	0	436
43	385	379	69	10	16	10	4	873
44	349	81	89	3	0	4	1	527
45	311	213	187	5	5	2	0	723
46	591	276	18	3	2	0	1	891
47	336	226	29	2	2	5	1	601
48	341	366	81	2	2	1	0	793
49	374	327	148	4	5	2	2	862
50	210	134	244	2	0	2	1	593
51	218	197	91	1	0	1	0	508
52	440	318	221	4	0	0	0	983
53	116	96	121	0	1	2	1	337
54	402	368	93	4	1	1	58	927
55	412	407	107	3	3	3	39	974
56	372	515	129	16	2	1	7	1042
57	434	394	23	5	6	6	8	876
58	26	791	12	0	0	0	0	829
59	109	239	5	2	1	0	0	356
60	133	232	2	1	0	0	0	368
61	356	221	18	3	1	6	0	605
62	220	336	6	2	1	0	0	565
63	419	315	38	3	3	5	5	788
64	226	259	40	0	2	1	3	531
65	429	445	45	6	1	4	5	935
66	327	230	41	7	1	4	4	614
67	337	242	17	2	0	1	1	600
68	397	313	122	2	3	3	8	848
69	307	316	151	4	3	0	3	784
70	423	510	68	7	1	0	3	1012

Contd....

## Polling Station Level Election Results

**Winner, Runner-up and 3rd Party Position & Winning Margin According to Polling Stations in Chandabali Assembly in Assembly Election (AE) under Bhadrak Parliamentary Constituency in Odisha (2019)**

Polling Station Number	Winner Party	Winner Votes (%)	Runner-up Party	Runner-up Votes (%)	Winning Margin Votes (%)	Third Party	Third Party Votes (%)	Other Votes (%)
71	BJP	450 (44.42)	BJD	434 (42.84)	16 (1.58)	INC	119 (11.75)	10 (0.99)
72	BJD	191 (52.19)	BJP	152 (41.53)	39 (10.66)	INC	20 (5.46)	3 (0.82)
73	BJD	157 (44.6)	BJP	141 (40.06)	16 (4.54)	INC	48 (13.64)	6 (1.7)
74	BJD	170 (55.37)	BJP	108 (35.18)	62 (20.19)	INC	26 (8.47)	3 (0.98)
75	BJP	381 (52.26)	BJD	276 (37.86)	105 (14.4)	INC	60 (8.23)	12 (1.65)
76	BJD	557 (52.15)	BJP	255 (23.88)	302 (28.27)	INC	247 (23.13)	9 (0.84)
77	INC	295 (43.77)	BJD	284 (42.14)	11 (1.63)	BJP	90 (13.35)	5 (0.74)
78	INC	460 (46.84)	BJD	335 (34.11)	125 (12.73)	BJP	173 (17.62)	14 (1.43)
79	BJD	416 (48.2)	INC	337 (39.05)	79 (9.15)	BJP	102 (11.82)	8 (0.93)
80	BJD	300 (41.44)	BJP	220 (30.39)	80 (11.05)	INC	199 (27.49)	5 (0.69)
81	BJD	370 (42.09)	INC	256 (29.12)	114 (12.97)	BJP	232 (26.39)	21 (2.39)
82	INC	381 (61.45)	BJD	156 (25.16)	225 (36.29)	BJP	76 (12.26)	7 (1.13)
83	BJD	269 (35.54)	INC	259 (34.21)	10 (1.33)	BJP	217 (28.67)	12 (1.59)
84	INC	339 (39.84)	BJD	320 (37.6)	19 (2.24)	BJP	178 (20.92)	14 (1.65)
85	BJD	461 (55.41)	INC	243 (29.21)	218 (26.2)	BJP	121 (14.54)	7 (0.84)
86	BJD	470 (71.21)	BJP	119 (18.03)	351 (53.18)	INC	68 (10.3)	3 (0.45)
87	BJD	248 (64.25)	INC	88 (22.8)	160 (41.45)	BJP	49 (12.69)	1 (0.26)
88	INC	300 (41.61)	BJD	295 (40.92)	5 (0.69)	BJP	120 (16.64)	6 (0.83)
89	INC	372 (50)	BJP	209 (28.09)	163 (21.91)	BJD	157 (21.1)	6 (0.81)
90	INC	147 (33.72)	BJD	143 (32.8)	4 (0.92)	BJP	141 (32.34)	5 (1.15)
91	BJD	461 (48.32)	BJP	243 (25.47)	218 (22.85)	INC	237 (24.84)	13 (1.36)
92	BJP	228 (38.64)	INC	203 (34.41)	25 (4.23)	BJD	149 (25.25)	10 (1.69)
93	INC	326 (56.11)	BJP	186 (32.01)	140 (24.1)	BJD	65 (11.19)	4 (0.69)
94	INC	445 (49.89)	BJP	255 (28.59)	190 (21.3)	BJD	185 (20.74)	7 (0.78)
95	BJP	463 (55.18)	INC	214 (25.51)	249 (29.67)	BJD	146 (17.4)	16 (1.91)
96	BJD	325 (43.74)	BJP	259 (34.86)	66 (8.88)	INC	147 (19.78)	12 (1.62)
97	BJD	192 (41.2)	BJP	160 (34.33)	32 (6.87)	INC	106 (22.75)	8 (1.72)
98	INC	228 (38.64)	BJD	198 (33.56)	30 (5.08)	BJP	159 (26.95)	5 (0.85)
99	INC	177 (41.65)	BJD	139 (32.71)	38 (8.94)	BJP	107 (25.18)	2 (0.47)
100	BJP	275 (42.97)	BJD	259 (40.47)	16 (2.5)	INC	103 (16.09)	3 (0.47)
101	BJP	130 (38.35)	INC	110 (32.45)	20 (5.9)	BJD	97 (28.61)	2 (0.59)
102	BJD	260 (38.46)	INC	217 (32.1)	43 (6.36)	BJP	197 (29.14)	2 (0.3)
103	INC	269 (39.79)	BJD	230 (34.02)	39 (5.77)	BJP	170 (25.15)	7 (1.04)
104	BJP	201 (44.37)	BJD	184 (40.62)	17 (3.75)	INC	64 (14.13)	4 (0.88)
105	BJP	434 (51.36)	BJD	359 (42.49)	75 (8.87)	INC	47 (5.56)	5 (0.59)

Contd....

## Socio-Economic Amenities - Rural

### Access to Education Facilities

Particulars	Number of Villages (% of Population)				
	Available	Not Available	If Not Available (Distance of Nearest Facility)		
			A	B	C
Govt. Primary School	283 (95)	53 (5)	52 (5)	1 (0)	0 (0)
Private Primary School	21 (11)	315 (89)	0 (0)	0 (0)	0 (0)
Govt. Middle School	141 (61)	195 (39)	88 (23)	70 (9)	28 (4)
Private Middle School	19 (10)	317 (90)	4 (1)	0 (0)	0 (0)
Govt. Secondary School	50 (29)	286 (71)	211 (53)	31 (6)	0 (0)
Private Secondary School	11 (6)	325 (94)	35 (9)	6 (2)	0 (0)
Govt. Senior Secondary School	5 (3)	331 (97)	49 (17)	85 (21)	35 (7)
Private Senior Secondary School	4 (2)	332 (98)	33 (9)	83 (26)	44 (16)
Govt. Arts and Science Degree College	1 (1)	335 (99)	24 (10)	45 (10)	27 (10)
Private Arts and Science Degree College	4 (2)	332 (98)	59 (16)	111 (32)	64 (19)
Govt. Engineering College	0 (0)	336 (100)	0 (0)	0 (0)	0 (0)
Private Engineering College	0 (0)	336 (100)	0 (0)	6 (1)	330 (99)
Govt. Medicine College	0 (0)	336 (100)	0 (0)	0 (0)	333 (99)
Private Medicine College	0 (0)	336 (100)	0 (0)	0 (0)	0 (0)
Govt. Management Institute	0 (0)	336 (100)	0 (0)	0 (0)	301 (88)
Private Management Institute	0 (0)	336 (100)	0 (0)	0 (0)	35 (12)
Govt. Polytechnic	0 (0)	336 (100)	0 (0)	0 (0)	287 (84)
Private Polytechnic	0 (0)	336 (100)	0 (0)	0 (0)	44 (15)
Govt. Vocational Training School/ITI	1 (1)	335 (99)	3 (1)	5 (1)	19 (6)
Private Vocational Training School/ITI	0 (0)	336 (100)	22 (9)	64 (20)	219 (63)
Govt. Non Formal Training Centre	1 (1)	335 (99)	24 (9)	66 (20)	229 (67)
Private Non Formal Training Centre	0 (0)	336 (100)	2 (1)	3 (1)	7 (1)
Govt. School For Disabled	0 (0)	336 (100)	0 (0)	0 (0)	288 (84)
Private School For Disabled	0 (0)	336 (100)	0 (0)	0 (0)	36 (12)
Government Others	2 (1)	334 (99)	0 (0)	0 (0)	1 (0)
Private Others	0 (0)	336 (100)	0 (0)	0 (0)	0 (0)

Note : Distance A : Less than 5 km; B : Between 5-10 km; C : 10+ km.; Source : Data Analysis is based on 2011 Census.

## DISCLAIMER

The Terms of Use and Disclaimer of Datanet India Private Limited (hereinafter referred to as "Datanet") for use of this analysis report of **Chandabali Assembly Constituency (Chandabali Vidhan Sabha)** :-

1. **Assembly Factbook™** is a Registered Trade Mark owned by Datanet.
2. All the maps are sketched and graphical representation only and have not been drawn to the scale and also not to represent the actual geographical area or boundary of the unit.
3. The data for the aforesaid analysis is based on authentic sources and has been culled from the various publications of Census, CSO and NSSO for district and block level data, various central and state government departments, Central & State Elections Commissions and the concerned Returning Officers' releases, Electoral Rolls, Election results and allied publications, internal assessment, surveys, estimates and analysis. Therefore, certain adjustment of data at micro level may have been done to arrive closer to the macro data.
4. Data have been provided on an "As Is" and "As AVAILABLE" basis
5. The colours shown in the maps or diagram and charts of a particular party, alliance or AC are indicative and do not represent them.
6. This publication which includes maps, sheets, graphs and data would be the property under copyright of Datanet only. The user may use these for its internal study, analysis and research purposes. It's public display, re-selling or any commercial uses by the user are not allowed.
7. Datanet has taken due care and caution in compilation and processing of data and allied information, but does not guarantee the accuracy, adequacy or completeness of any information/analysis and will be not responsible for any errors or omissions or for the results obtained from the use of such information/analysis.
8. All the contents for the publication have been culled from various authentic sources and Datanet reasonably believes such sources to be reliable, but does not make any representations, express or implied as to the accuracy or fitness of use of such information. The information or contents of the information/analysis do not constitute advice and should not be relied upon in making (or refraining from making) any decision. Any reliance placed upon the information provided by Datanet is the sole responsibility and strictly at the user's risk.
9. In no event will Datanet be liable for any damages (including, without limitation, damages for loss of business projects, or loss of profits) arising in contract, tort or otherwise from the use of or inability to use any of its contents, or from any action taken (or refrained from being taken) as a result of using the analysis or any of its contents. Datanet its directors, owners, editors, officials, employees, distributor and agents or any associate will not be liable for any errors in the information contained or any consequences arising from the use of the contents of the provided information/analysis.
10. If any provision of these terms and conditions is held invalid or illegal or unenforceable for any reason by any court of competent jurisdiction, such provision shall be severed and the remainder of provisions of the terms and conditions shall continue in full force and effect as if the Term of Use had been executed with the invalid, illegal or unenforceable provision eliminated.
11. If there are any discrepancies in the information provided, please bring it to attention of Datanet for suitable rectification measures.



**Buy Online This Complete Book At  
Datanet India eBooks Store**

**[www.indiastatpublications.com](http://www.indiastatpublications.com)**

**or go directly at**

**[http://www.indiastatpublications.com/  
Assembly\\_factbook/Odisha/Bhadrak/ Chandabali](http://www.indiastatpublications.com/Assembly_factbook/Odisha/Bhadrak/Chandabali)**

 **indiastat**elections

ISBN : 978-93-5301-889-4



9 789353 018894