



Odisha

Assembly Factbook™

Padampur Assembly Constituency



Key Electoral Data of Padampur
Assembly Constituency (Vidhan Sabha)

Odisha

Assembly Factbook™

Padampur Assembly Constituency



Padampur Vidhan Sabha

Editor & Director

Dr. R.K. Thukral

Research Editor

Dr. Shafeeq Rahman

Compiled, Researched and Published by Datanet India Pvt. Ltd.

D-100, 1st Floor,

Okhla Industrial Area, Phase-I,
New Delhi- 110020.

Ph.: 91-11- 43580781-84

Email : support@indiastatpublications.com

Website : www.indiastatelections.com

Online Book Store :

www.indiastatpublications.com

Report No. : AFB/OD-001-0123

ISBN : 978-93-5301-908-2

First Edition : January, 2018

Sixth Updated Edition : January, 2023

Price : Rs. 11500/-

US\$ 310

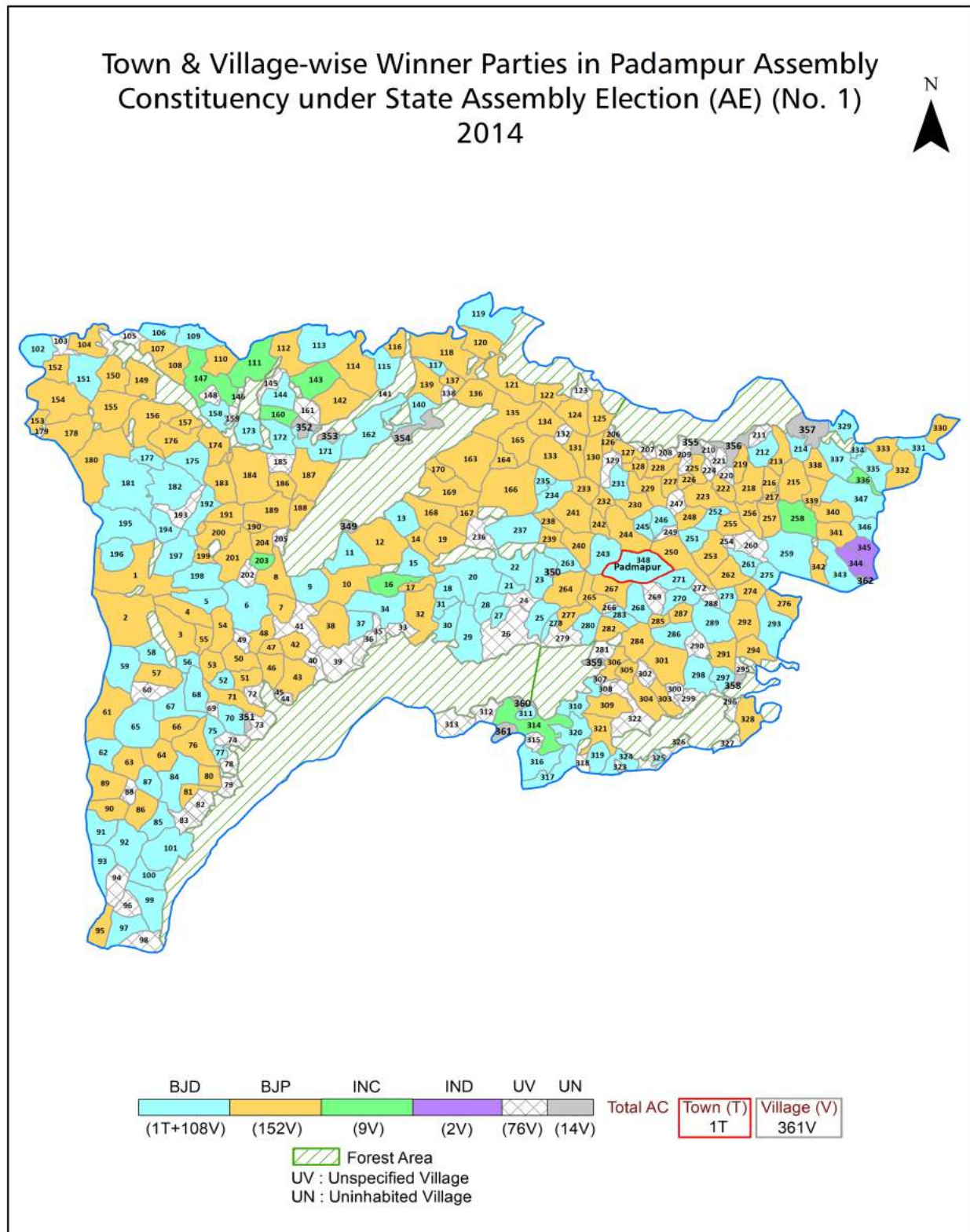
© Datanet India Pvt. Ltd.

All rights reserved. No part of this book may be reproduced, stored in a retrieval system or transmitted in any form or by any means, mechanical photocopying, photographing, scanning, recording or otherwise without the prior written permission of the publisher. Please refer to Disclaimer at page no. 273 for the use of this publication.

Printed in India

No.	Particulars	Page No.
	Introduction	
1	Assembly Constituency - (Vidhan Sabha) at a Glance Features of Assembly as per Delimitation Commission of India (2008)	1-2
	Location and Political Maps	
2	Location Map Boundaries of Assembly Constituency - (Vidhan Sabha) in District Boundaries of Assembly Constituency under Parliamentary Constituency - (Lok Sabha) Town & Village-wise Winner Parties- 2019-PE, 2019-AE, 2014-PE, 2014-AE, 2009-PE and 2009-AE	3-11
	Administrative Setup (2011)	
3	District Sub-district Towns Villages Inhabited Villages Uninhabited Villages Village Panchayat Intermediate Panchayat	12-29
	Demographics (2011)	
4	Population Households Rural/Urban Population Towns and Villages by Population Size Sex Ratio (Total & 0-6 Years) Religious Population Social Population Literacy Rate	30-31
	Electoral Features	
5	Important Dates of Last Elections Held Electors by Gender Service Electors Voters Voters Turnout Polling Stations & Average Number of Electors per Polling Station Electors by Age Group Present Elected Representatives	32-37
	Historical Summary Election Results	
6	Vote Share of Major Parties Winning Margin (Number & Percentage) Polarity of Parties Summary Result of Assembly Segment of Parliamentary Elections 2019, 2014, 2009, 2004 and 1999 Summary Result of Assembly Elections 2019, 2014, 2009, 2004, 2000, 1995, 1990, 1985, 1980, 1977, 1974, 1971, 1967, 1961, 1957 and 1952	38-62
	Polling Station Level Election Results	
7	Name and Number of Polling Station 2019-PE, 2019-AE, 2014-PE, 2014-AE, 2009-PE and 2009-AE Polling Station-wise Electors, Voters & Voters Turnout 2019-PE, 2019-AE, 2014-PE, 2014-AE, 2009-PE and 2009-AE Polling Station wise Elections Results 2019-PE, 2019-AE, 2014-PE, 2014-AE, 2009-PE and 2009-AE	63-252
	Share of Assembly Constituency	
8	Share of Assembly Constituency - (Vidhan Sabha) in State, District and Parliamentary Constituency - (Lok Sabha)	253
	Socio-Economic Amenities (2011)	
9	Access to Administrative Units Agricultural, Manufacturing and Industrial Commodities Demographic Indicators Education Health & Manpower Drinking Water Supply Sanitation Entertainment and Recreations Infrastructure Power Food Allocation Distribution and Marketing of Agriculture Commodities Infrastructure Transport and Road Infrastructure Communication Banking and Financial Services Land Use Irrigation Source	255-269
10	Abbreviation & Sources	270-271
11	Disclaimer	273

Location & Political Map



Administrative Setup

List of Village Panchayat & Intermediate Panchayat (Block) Name - 2011

Village Name	Village Panchayat Name	Intermediate Panchayat Name
Adhapani	Chandibhata	Jharbandha
Amarakhol	Buden	Padmapur
Ambahal	Dahita	Padmapur
Ambamunda	Palsapali	Padmapur
Amdahan	Dahita	Padmapur
Ammunda	Barihapali	Padmapur
Amthi	Amthi	Jharbandha
Anadibahal	Amthi	Jharbandha
Angul	Dava	Jharbandha
Antarla (Atarla)	Jamartala	Padmapur
Badanki	Chhotanki	Jharbandha
Badibahal	Bartunda	Paikamal
Badikata	Badikata	Paikamal
Badimal	Khaliapali	Padmapur
Badkanjari	Jagdulpur	Jharbandha
Bageijuri	Purena	Padmapur
Baidpali	Kansingha	Padmapur
Baitalbhata	Saraikela	Paikamal
Baitali	Amthi	Jharbandha
Bajenmunda	Khaliapali	Padmapur
Bambarit	Lakhamara	Paikamal
Bandamunda	Kandadangar	Jharbandha
Bandupali	Kansar	Padmapur
Banjhapali	Barihapali	Padmapur
Banjujhula	Jamartala	Padmapur
Bankikhaman	Dahita	Padmapur
Banmal	Bhengrajpur	Paikamal
Banupali	Kansar	Padmapur
Baradapali	Buden	Padmapur

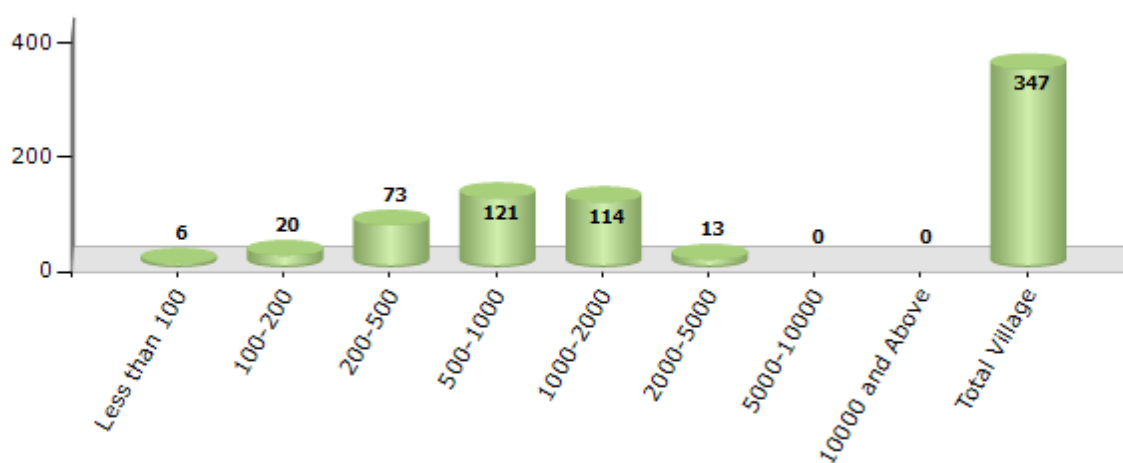
Contd....

Demographic

Number of Villages by Population Size - 2011

Less than 100	100-200	200-500	500-1000	1000-2000	2000-5000	5000-10000	10000 and Above	Total Village
6	20	73	121	114	13	0	0	347

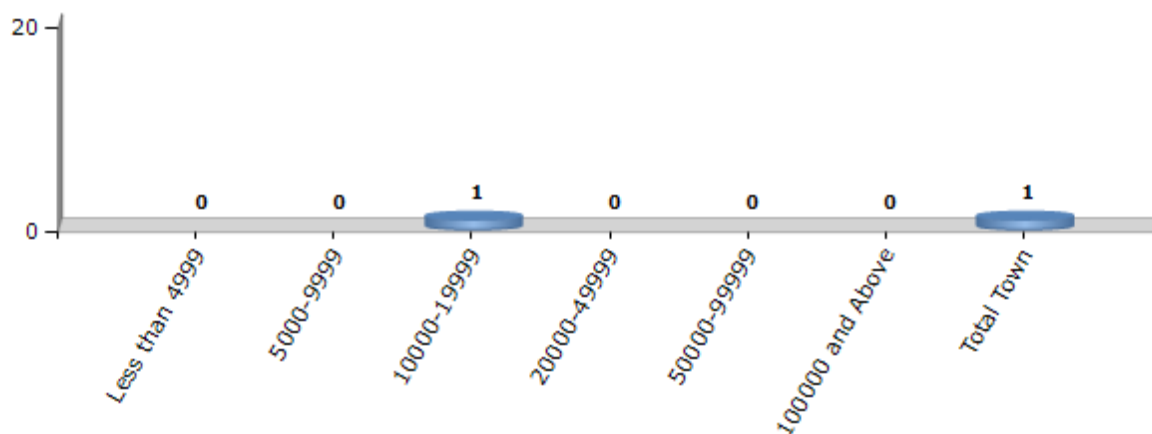
Number of Villages by Population Size - 2011



Number of Towns by Population Size - 2011

Less than 4999	5000-9999	10000-19999	20000-49999	50000-99999	100000 and Above	Total Town
0	0	1	0	0	0	1

Number of Towns by Population Size - 2011



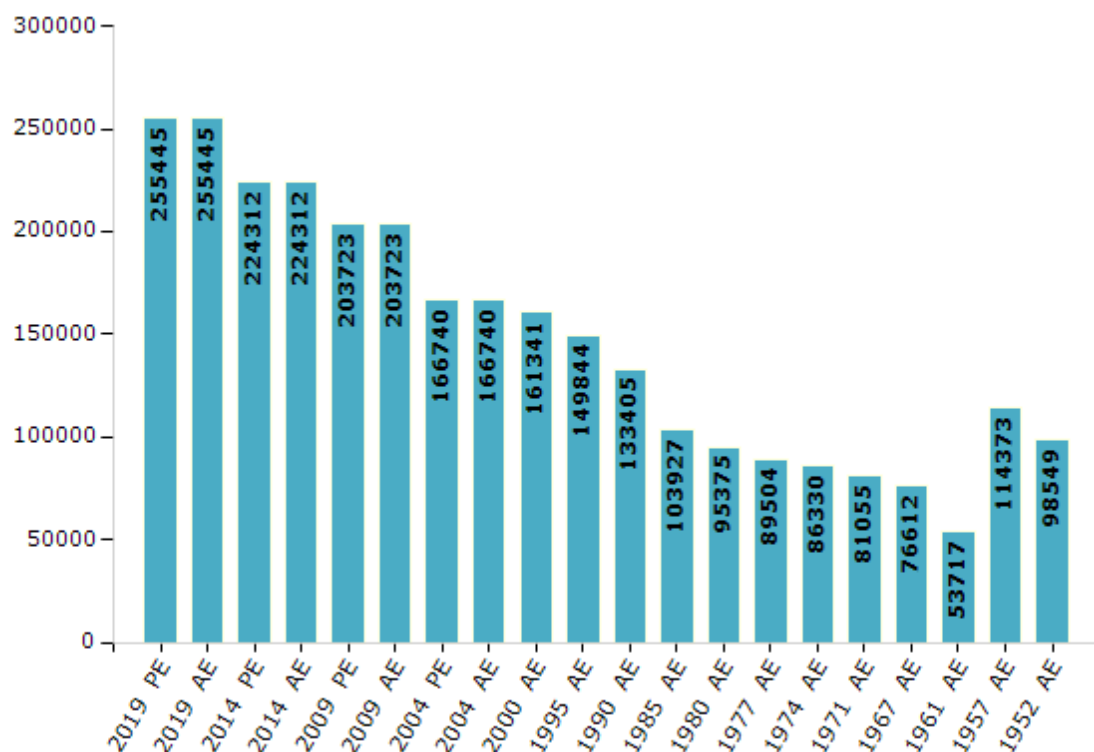
Electoral Features

Electors by Male & Female

Year	Male	Female	Others	Total
2019 PE	129251	126176	18	255445
2019 AE	129251	126176	18	255445
2014 PE	115242	109070	0	224312
2014 AE	115242	109070	0	224312
2009 PE	103991	99732	-	203723
2009 AE	103991	99732	-	203723
2004 PE	83903	82837	-	166740
2004 AE	83903	82837	-	166740
2000 AE	81756	79585	-	161341
1999 PE	-	-	-	-
1995 AE	77746	72098	-	149844

Year	Male	Female	Others	Total
1990 AE	68345	65060	-	133405
1985 AE	51683	52244	-	103927
1980 AE	46955	48420	-	95375
1977 AE	45166	44338	-	89504
1974 AE	42347	43983	-	86330
1971 AE	40553	40502	-	81055
1967 AE	76612	0	-	76612
1961 AE	53717	0	-	53717
1957 AE	114373	0	-	114373
1952 AE	-	-	-	98549

Number of Electors



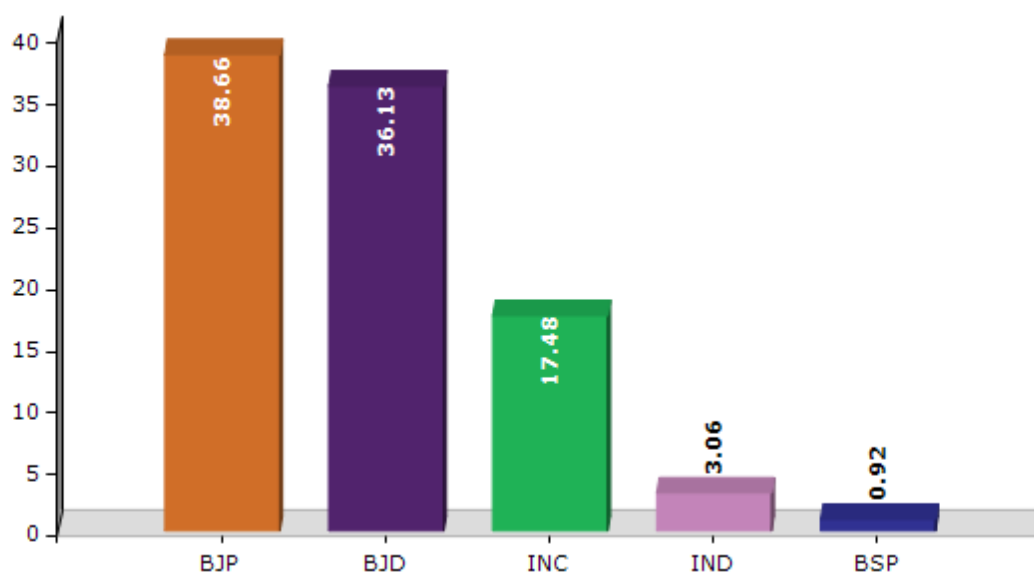
Note : AE : Assembly Election, PE : Assembly Segment of Parliamentary Election

Historical Summary Election Results

Summary Result of Assembly Election - 2014

Candidate Name	Party	Votes	Votes %
Pradip Purohit	BJP	68942	38.66
Bijaya Ranjan Singha Bariha	BJD	64429	36.13
Prakash Narayan Tripathy	INC	31179	17.48
Gobardhan Bhoy	IND	5456	3.06
Tankadhar Kanta	BSP	1632	0.92
Rajkumar Seth	AAP	1563	0.88
Gangadhar Bhoi	PCHVP	1295	0.73
Purnananda Sahu	IND	1132	0.63
Neheru Bag	OJM	953	0.53
	NOTA	1751	0.98

Votes Percentage of Top Parties - 2014



Polling Station Level Election Results

Number and Name of Polling Stations (PS) (2019 AE)

Number of Polling Stations	Name of Polling Stations	Number of Polling Stations	Name of Polling Stations
1	Badanki	22	Niljipatra
2	Kukripali	23	Laudidarha
3	Ureidadar	24	Gaudmal
4	Beheraduburi	25	Gaudmal
5	Loharasingh	26	Kurma
6	Dewanpali	27	Sikaripali
7	Kurlupali	28	Nuapada
8	Dabpali	29	Nuapada
9	Bhandarpuri	30	Putuka
10	Jampali	31	Khirapali
11	Chhotanki	32	Jagdalapur
12	Ghuchapali	33	Dhaurabhata
13	Bolangir	34	Badkunjari
14	Rajendrapur	35	Sankunjari
15	Palsada	36	Saramsili
16	Dava	37	Chiroli
17	Dava	38	Jatesira
18	Anagul	39	Dunguripali
19	Suryamanipur	40	Mahagaon
20	Bhainsadaha	41	Chandibhata
21	Niljipatra	42	Adapani

Contd....

Polling Station Level Election Results

Polling Station-wise Votes Secured by Overall Top Five Parties in Padampur Assembly in Assembly Election (AE) under Bargarh Parliamentary Constituency in Odisha (2019)

Number of Polling Station	Winner - Bijaya Ranjan Singh Bariha (BJD)	Runner-up - Pradip Purohit (BJP)	3rd - Satya Bhusan Sahu (INC)	4th - Raju Ghibela (IND)	5th - Tankadhara Kanta (BSP)	NOTA	Other	Total Votes Secured
36	279	120	39	1	1	6	0	446
37	77	170	55	1	2	3	0	308
38	309	304	259	14	3	16	0	905
39	265	413	236	11	1	7	0	933
40	232	387	162	8	1	3	0	793
41	356	202	288	5	4	10	0	865
42	165	241	86	20	8	9	0	529
43	221	272	109	20	6	5	0	633
44	226	247	119	20	3	1	0	616
45	70	190	24	2	0	0	0	286
46	323	325	75	35	9	13	0	780
47	250	109	158	150	6	13	0	686
48	375	194	11	9	0	1	0	590
49	362	313	80	16	3	10	0	784
50	261	211	345	26	6	14	0	863
51	438	267	56	18	4	16	0	799
52	158	274	37	46	4	6	0	525
53	505	263	107	11	2	6	0	894
54	302	3	2	1	2	5	0	315
55	477	369	52	5	2	5	0	910
56	372	304	120	17	4	3	0	820
57	258	330	208	71	4	10	0	881
58	278	347	275	24	7	14	0	945
59	144	199	210	7	0	5	0	565
60	149	252	210	20	3	17	0	651
61	218	265	161	30	10	6	0	690
62	273	443	73	28	2	6	0	825
63	258	165	386	47	0	4	0	860
64	91	101	43	9	2	1	0	247
65	177	143	165	12	6	7	0	510
66	185	141	186	9	3	9	0	533
67	168	155	106	55	5	4	0	493
68	275	174	160	19	5	8	0	641
69	139	97	85	4	2	1	0	328
70	230	215	50	6	1	7	0	509

Contd....

Polling Station Level Election Results

Winner, Runner-up and 3rd Party Position & Winning Margin According to Polling Stations in Padampur Assembly in Assembly Election (AE) under Bargarh Parliamentary Constituency in Odisha (2019)

Polling Station Number	Winner Party	Winner Votes (%)	Runner-up Party	Runner-up Votes (%)	Winning Margin Votes (%)	Third Party	Third Party Votes (%)	Other Votes (%)
71	BJD	292 (50.34)	BJP	204 (35.17)	88 (15.17)	INC	76 (13.1)	8 (1.38)
72	BJD	397 (48)	BJP	265 (32.04)	132 (15.96)	INC	133 (16.08)	32 (3.87)
73	BJD	348 (43.45)	BJP	316 (39.45)	32 (4)	INC	122 (15.23)	15 (1.87)
74	INC	185 (44.9)	BJD	106 (25.73)	79 (19.17)	BJP	105 (25.49)	16 (3.88)
75	BJP	378 (46.61)	BJD	247 (30.46)	131 (16.15)	INC	153 (18.87)	33 (4.07)
76	BJD	280 (38.67)	BJP	258 (35.64)	22 (3.03)	INC	162 (22.38)	24 (3.31)
77	BJD	401 (52.62)	BJP	257 (33.73)	144 (18.89)	INC	81 (10.63)	23 (3.02)
78	BJD	205 (65.29)	BJP	59 (18.79)	146 (46.5)	INC	45 (14.33)	5 (1.59)
79	BJD	256 (41.69)	BJP	230 (37.46)	26 (4.23)	INC	114 (18.57)	14 (2.28)
80	BJD	242 (40.74)	BJP	208 (35.02)	34 (5.72)	INC	105 (17.68)	39 (6.57)
81	BJP	234 (46.8)	BJD	179 (35.8)	55 (11)	INC	70 (14)	17 (3.4)
82	BJD	253 (46.51)	BJP	147 (27.02)	106 (19.49)	INC	123 (22.61)	21 (3.86)
83	BJP	265 (45.07)	BJD	207 (35.2)	58 (9.87)	INC	100 (17.01)	16 (2.72)
84	BJD	574 (60.81)	BJP	256 (27.12)	318 (33.69)	INC	103 (10.91)	11 (1.17)
85	BJP	239 (47.7)	BJD	154 (30.74)	85 (16.96)	INC	96 (19.16)	12 (2.4)
86	BJD	319 (65.91)	BJP	84 (17.36)	235 (48.55)	INC	64 (13.22)	17 (3.51)
87	BJP	413 (57.84)	BJD	205 (28.71)	208 (29.13)	INC	52 (7.28)	44 (6.16)
88	BJD	214 (43.23)	BJP	205 (41.41)	9 (1.82)	INC	68 (13.74)	8 (1.62)
89	BJD	350 (44.7)	BJP	240 (30.65)	110 (14.05)	INC	162 (20.69)	31 (3.96)
90	INC	171 (35.85)	BJP	153 (32.08)	18 (3.77)	BJD	144 (30.19)	9 (1.89)
91	INC	258 (35.83)	BJD	242 (33.61)	16 (2.22)	BJP	209 (29.03)	11 (1.53)
92	BJD	287 (44.36)	INC	232 (35.86)	55 (8.5)	BJP	111 (17.16)	17 (2.63)
93	BJD	410 (42.58)	INC	262 (27.21)	148 (15.37)	BJP	250 (25.96)	41 (4.26)
94	BJD	478 (57.18)	BJP	178 (21.29)	300 (35.89)	INC	145 (17.34)	35 (4.19)
95	BJP	492 (44.48)	BJD	416 (37.61)	76 (6.87)	INC	163 (14.74)	35 (3.16)
96	BJP	331 (39.88)	BJD	268 (32.29)	63 (7.59)	INC	190 (22.89)	41 (4.94)
97	BJD	331 (39.93)	BJP	285 (34.38)	46 (5.55)	INC	185 (22.32)	28 (3.38)
98	BJD	147 (43.24)	INC	101 (29.71)	46 (13.53)	BJP	83 (24.41)	9 (2.65)
99	BJD	268 (47.52)	BJP	193 (34.22)	75 (13.3)	INC	92 (16.31)	11 (1.95)
100	BJP	227 (36.97)	INC	217 (35.34)	10 (1.63)	BJD	153 (24.92)	17 (2.77)
101	INC	521 (57.95)	BJP	212 (23.58)	309 (34.37)	BJD	140 (15.57)	26 (2.89)
102	INC	556 (59.98)	BJD	185 (19.96)	371 (40.02)	BJP	159 (17.15)	27 (2.91)
103	INC	324 (43.2)	BJD	233 (31.07)	91 (12.13)	BJP	162 (21.6)	31 (4.13)
104	BJD	412 (53.3)	BJP	168 (21.73)	244 (31.57)	INC	165 (21.35)	28 (3.62)
105	BJP	195 (40.97)	BJD	164 (34.45)	31 (6.52)	INC	98 (20.59)	19 (3.99)

Contd....

Socio-Economic Amenities - Rural

Access to Education Facilities

Particulars	Number of Villages (% of Population)				
	Available	Not Available	If Not Available (Distance of Nearest Facility)		
			A	B	C
Govt. Primary School	346 (100)	1 (0)	1 (0)	0 (0)	0 (0)
Private Primary School	22 (6)	325 (94)	0 (0)	0 (0)	0 (0)
Govt. Middle School	240 (77)	107 (23)	67 (15)	38 (7)	1 (0)
Private Middle School	15 (5)	332 (95)	0 (0)	0 (0)	0 (0)
Govt. Secondary School	69 (21)	278 (79)	139 (40)	65 (19)	0 (0)
Private Secondary School	12 (4)	335 (96)	46 (12)	18 (4)	0 (0)
Govt. Senior Secondary School	60 (31)	287 (69)	33 (8)	81 (20)	81 (20)
Private Senior Secondary School	8 (5)	339 (95)	26 (5)	50 (12)	12 (3)
Govt. Arts and Science Degree College	13 (8)	334 (92)	25 (6)	74 (19)	139 (38)
Private Arts and Science Degree College	4 (1)	343 (99)	8 (2)	25 (9)	59 (17)
Govt. Engineering College	0 (0)	347 (100)	0 (0)	0 (0)	0 (0)
Private Engineering College	1 (0)	346 (100)	1 (0)	3 (1)	342 (99)
Govt. Medicine College	0 (0)	347 (100)	0 (0)	1 (0)	346 (100)
Private Medicine College	0 (0)	347 (100)	0 (0)	0 (0)	0 (0)
Govt. Management Institute	0 (0)	347 (100)	0 (0)	0 (0)	186 (55)
Private Management Institute	0 (0)	347 (100)	1 (0)	2 (0)	158 (45)
Govt. Polytechnic	0 (0)	347 (100)	0 (0)	1 (0)	90 (26)
Private Polytechnic	0 (0)	347 (100)	1 (0)	2 (0)	107 (32)
Govt. Vocational Training School/ITI	0 (0)	347 (100)	1 (0)	1 (0)	66 (21)
Private Vocational Training School/ITI	0 (0)	347 (100)	4 (0)	13 (3)	103 (28)
Govt. Non Formal Training Centre	0 (0)	347 (100)	0 (0)	0 (0)	84 (26)
Private Non Formal Training Centre	0 (0)	347 (100)	2 (0)	1 (0)	78 (22)
Govt. School For Disabled	0 (0)	347 (100)	0 (0)	0 (0)	94 (29)
Private School For Disabled	0 (0)	347 (100)	2 (0)	3 (1)	105 (32)
Government Others	3 (1)	344 (99)	0 (0)	0 (0)	0 (0)
Private Others	2 (1)	345 (99)	0 (0)	0 (0)	0 (0)

Note : Distance A : Less than 5 km; B : Between 5-10 km; C : 10+ km.; Source : Data Analysis is based on 2011 Census.

DISCLAIMER

The Terms of Use and Disclaimer of Datanet India Private Limited (hereinafter referred to as "Datanet") for use of this analysis report of **Padampur Assembly Constituency (Padampur Vidhan Sabha)** :-

1. **Assembly Factbook™** is a Registered Trade Mark owned by Datanet.
2. All the maps are sketched and graphical representation only and have not been drawn to the scale and also not to represent the actual geographical area or boundary of the unit.
3. The data for the aforesaid analysis is based on authentic sources and has been culled from the various publications of Census, CSO and NSSO for district and block level data, various central and state government departments, Central & State Elections Commissions and the concerned Returning Officers' releases, Electoral Rolls, Election results and allied publications, internal assessment, surveys, estimates and analysis. Therefore, certain adjustment of data at micro level may have been done to arrive closer to the macro data.
4. Data have been provided on an "As Is" and "As AVAILABLE" basis
5. The colours shown in the maps or diagram and charts of a particular party, alliance or AC are indicative and do not represent them.
6. This publication which includes maps, sheets, graphs and data would be the property under copyright of Datanet only. The user may use these for its internal study, analysis and research purposes. It's public display, re-selling or any commercial uses by the user are not allowed.
7. Datanet has taken due care and caution in compilation and processing of data and allied information, but does not guarantee the accuracy, adequacy or completeness of any information/analysis and will be not responsible for any errors or omissions or for the results obtained from the use of such information/analysis.
8. All the contents for the publication have been culled from various authentic sources and Datanet reasonably believes such sources to be reliable, but does not make any representations, express or implied as to the accuracy or fitness of use of such information. The information or contents of the information/analysis do not constitute advice and should not be relied upon in making (or refraining from making) any decision. Any reliance placed upon the information provided by Datanet is the sole responsibility and strictly at the user's risk.
9. In no event will Datanet be liable for any damages (including, without limitation, damages for loss of business projects, or loss of profits) arising in contract, tort or otherwise from the use of or inability to use any of its contents, or from any action taken (or refrained from being taken) as a result of using the analysis or any of its contents. Datanet its directors, owners, editors, officials, employees, distributor and agents or any associate will not be liable for any errors in the information contained or any consequences arising from the use of the contents of the provided information/analysis.
10. If any provision of these terms and conditions is held invalid or illegal or unenforceable for any reason by any court of competent jurisdiction, such provision shall be severed and the remainder of provisions of the terms and conditions shall continue in full force and effect as if the Term of Use had been executed with the invalid, illegal or unenforceable provision eliminated.
11. If there are any discrepancies in the information provided, please bring it to attention of Datanet for suitable rectification measures.

**Buy Online This Complete Book At
Datanet India eBooks Store**

www.indiastatpublications.com

or go directly at

**[http://www.indiastatpublications.com/
Assembly_factbook/Odisha/Bargarh/ Padampur](http://www.indiastatpublications.com/Assembly_factbook/Odisha/Bargarh/Padampur)**

 **indiastat**elections

ISBN : 978-93-5301-908-2

