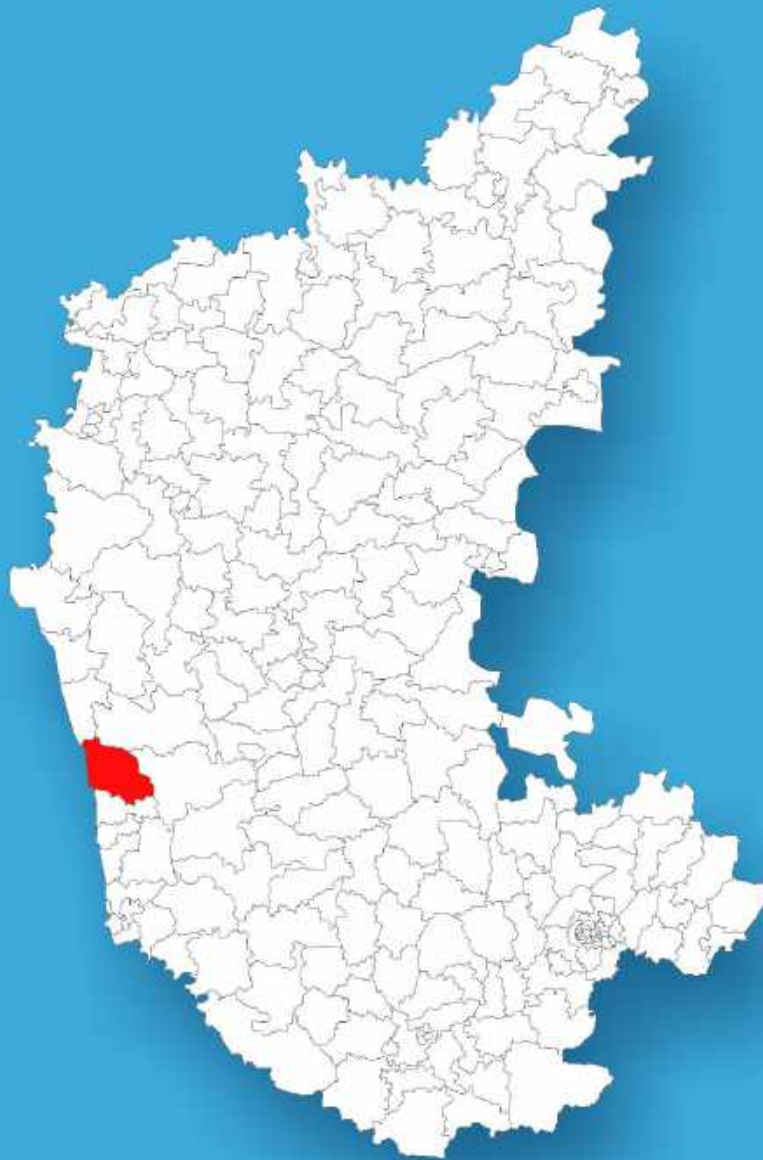




Karnataka

# Assembly Factbook™

Byndoor Assembly Constituency

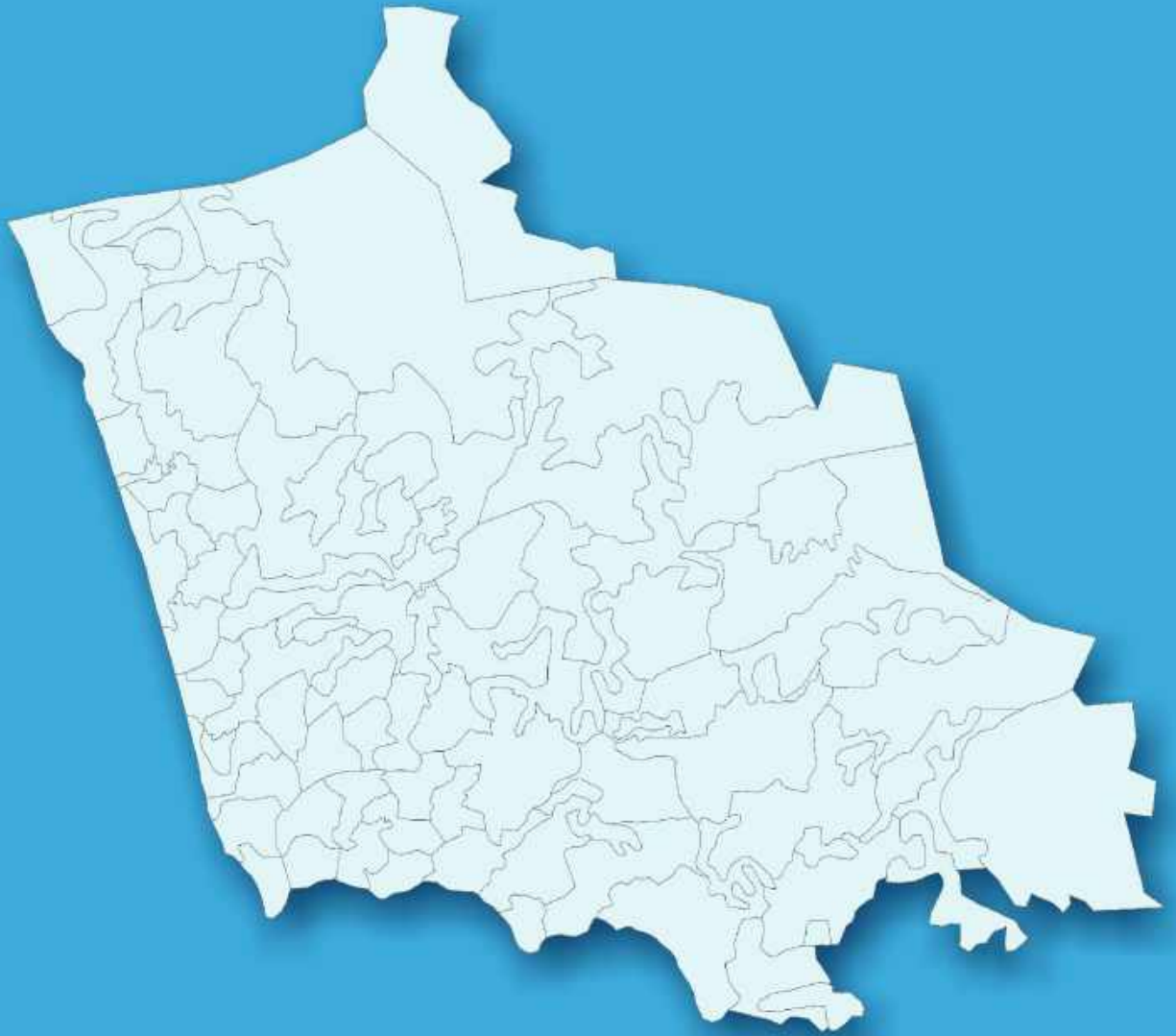


Key Electoral Data of Byndoor  
Assembly Constituency (Vidhan Sabha)

Karnataka

# Assembly Factbook™

Byndoor Assembly Constituency



Byndoor Vidhan Sabha

## **Editor & Director**

Dr. R.K. Thukral

## **Research Editor**

Dr. Shafeeq Rahman

## **Compiled, Researched and Published by Datanet India Pvt. Ltd.**

D-100, 1st Floor,

Okhla Industrial Area, Phase-I,

New Delhi- 110020.

Ph.: 91-11- 43580781-84

Email : support@indiastatpublications.com

Website : <http://www.indiastatelections.com>

## **Online Book Store :**

[www.indiastatpublications.com](http://www.indiastatpublications.com)

**Report No. :** AFB/KA-118-0125

**ISBN :** 978-93-5802-251-3

**First Edition :** January, 2018

**Eighth Updated Edition :** January, 2025

**Price :** Rs.11500/-

US\$ 310

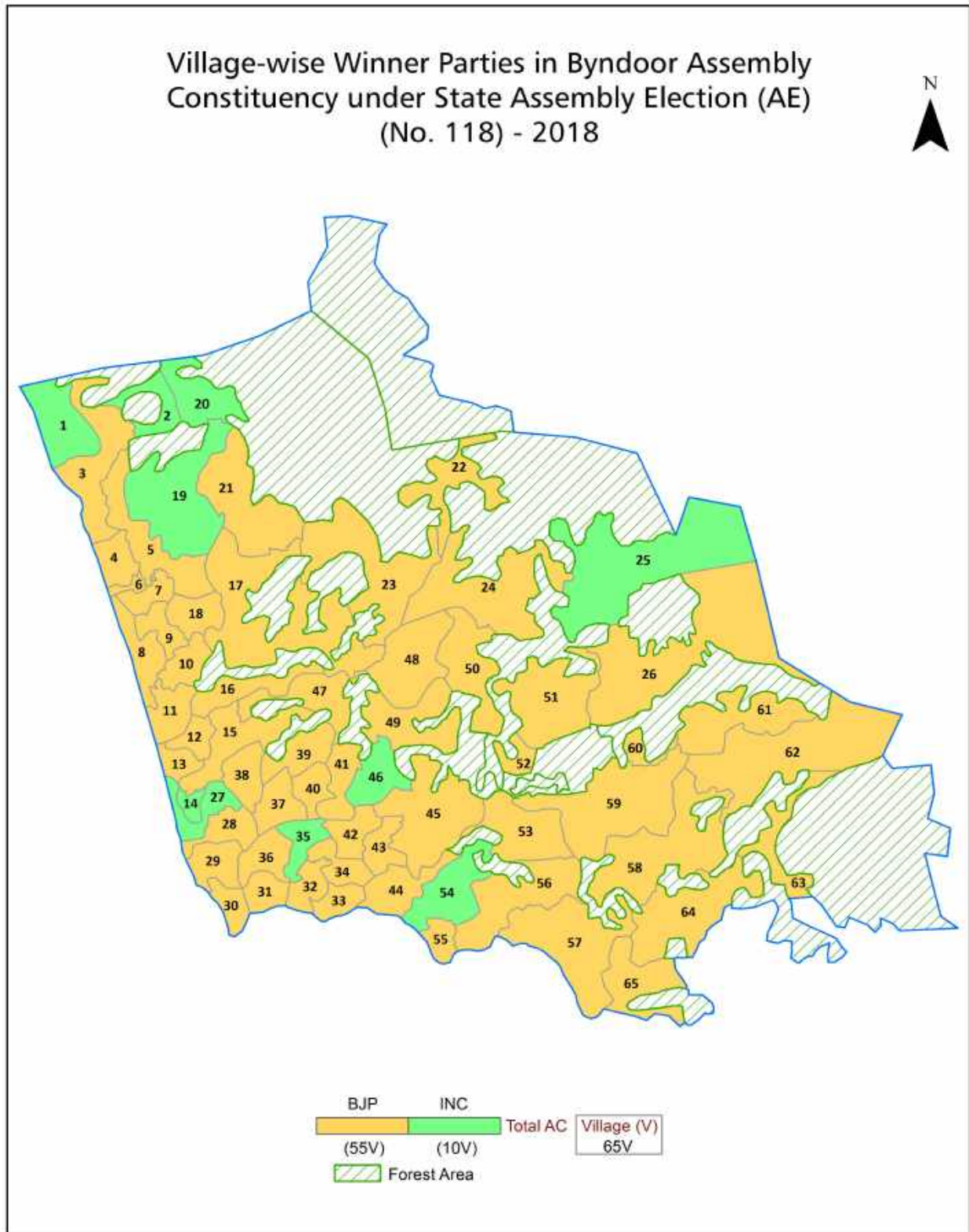
## **© Datanet India Pvt. Ltd.**

All rights reserved. No part of this book may be reproduced, stored in a retrieval system or transmitted in any form or by any means, mechanical photocopying, photographing, scanning, recording or otherwise without the prior written permission of the publisher. Please refer to Disclaimer at page no. 214 for the use of this publication.

Printed in India

No.	Particulars	Page No.
	<b>Introduction</b>	
1	Assembly Constituency - (Vidhan Sabha) at a Glance   Features of Assembly as per Delimitation Commission of India (2008)	1-2
	<b>Location and Political Maps</b>	
2	Location Map   Boundaries of Assembly Constituency - (Vidhan Sabha) in District   Boundaries of Assembly Constituency under Parliamentary Constituency - (Lok Sabha)   Village-wise Winner Parties- 2024, 2023, 2019, 2018, 2014, 2013 and 2009	3-11
	<b>Administrative Setup (2011)</b>	
3	District   Sub-district   Towns   Villages   Inhabited Villages   Uninhabited Villages   Village Panchayat   Intermediate Panchayat	12-15
	<b>Demographics (2011)</b>	
4	Population   Households   Rural/Urban Population   Villages by Population Size   Sex Ratio (Total & 0-6 Years)   Religious Population   Social Population   Literacy Rate	16-17
	<b>Electoral Features</b>	
5	Important Dates of Last Elections Held   Electors by Gender   Service Electors   Voters   Voters Turnout   Polling Stations & Average Number of Electors per Polling Station   Electors by Age Group   Present Elected Representatives	18-23
	<b>Historical Summary Election Results</b>	
6	Vote Share of Major Parties   Winning Margin (Number & Percentage)   Polarity of Parties   Summary Result of Assembly Segment of Parliamentary Elections 2024, 2019, 2014, 2009, 2004 and 1999   Summary Result of Assembly Elections 2023, 2018, 2013, 2008, 2004, 1999, 1994, 1989, 1985, 1983, 1978, 1972, 1967, 1962 and 1957	24-47
	<b>Polling Station Level Election Results</b>	
7	Name and Number of Polling Station 2024, 2023, 2019, 2018, 2014, 2013 and 2009   Polling Station-wise Electors, Voters & Voters Turnout 2024, 2023, 2019, 2018, 2014, 2013 and 2009   Polling Station wise Elections Results 2024, 2023, 2019, 2018, 2014, 2013 and 2009	48-194
	<b>Share of Assembly Constituency</b>	
8	Share of Assembly Constituency - (Vidhan Sabha) in State, District and Parliamentary Constituency - (Lok Sabha)	195
	<b>Socio-Economic Amenities (2011)</b>	
9	Access to Administrative Units   Agricultural, Manufacturing and Industrial Commodities   Demographic Indicators   Education   Health & Manpower   Drinking Water Supply   Sanitation   Entertainment and Recreations Infrastructure   Power   Food Allocation Distribution and Marketing of Agriculture Commodities Infrastructure   Transport and Road Infrastructure   Communication   Banking and Financial Services   Land Use   Irrigation Source	197-211
10	<b>Abbreviation &amp; Sources</b>	212-213
11	<b>Disclaimer</b>	214

Location & Political Map



## Administrative Setup

### List of Village Panchayat & Intermediate Panchayat (Block) Name - 2011

Village Name	Village Panchayat Name	Intermediate Panchayat Name
Ajri	Ajri	Kundapura
Aloor	Aloor	Kundapura
Ampar	Ampar	Kundapura
Badakere	Nada	Kundapura
Bellal	Keradi	Kundapura
Bijoor	Bijoor	Kundapura
Byndoor	Byndoor	Kundapura
Chittoor	Chittoor	Kundapura
Devalkunda	Hemmadi	Kundapura
Edmoge	Hosangadi	Kundapura
Gangolli	Gangolli	Kundapura
Golihole	Golihole	Kundapura
Gujjadi	Gujjadi	Kundapura
Gulvadi	Karkunje	Kundapura
Hadavu	Nada	Kundapura
Hakladi	Hakladi	Kundapura
Hallihole	Hallihole	Kundapura
Halnad	Kavradu	Kundapura
Harkoor	Aloor	Kundapura
Hattiangadi	Hattiangadi	Kundapura
Hemmadi	Hemmadi	Kundapura
Heranjal	Kambadakone	Kundapura
Heroor	Heroor	Kundapura
Hosadu	Trashi	Kundapura
Hosangadi	Hosangadi	Kundapura
Hosoor	Chittoor	Kundapura
Idurkunhadi	Chittoor	Kundapura
Jadkal	Jadkal	Kundapura
Kalthodu	Kalthodu	Kundapura

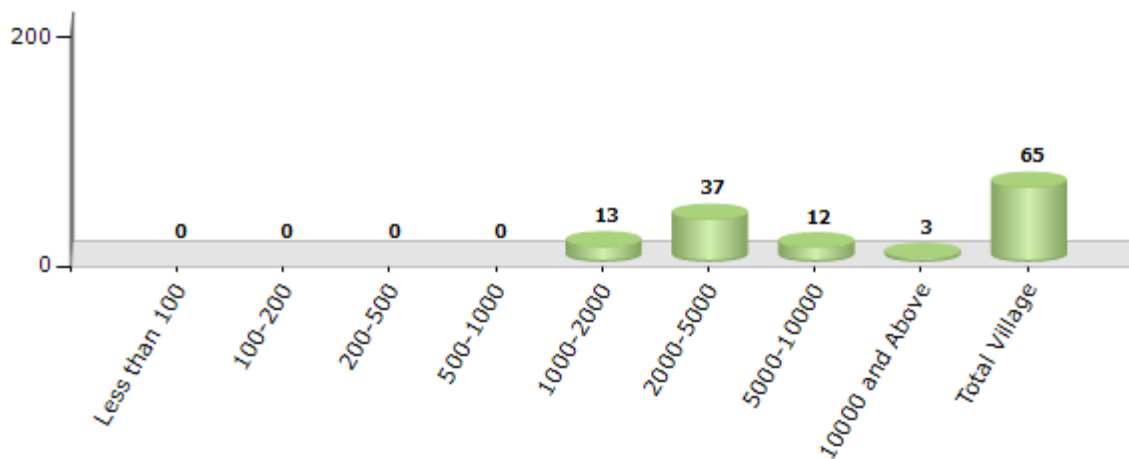
Contd....

## Demographic

### Number of Villages by Population Size - 2011

Less than 100	100-200	200-500	500-1000	1000-2000	2000-5000	5000-10000	10000 and Above	Total Village
0	0	0	0	13	37	12	3	65

Number of Villages by Population Size - 2011

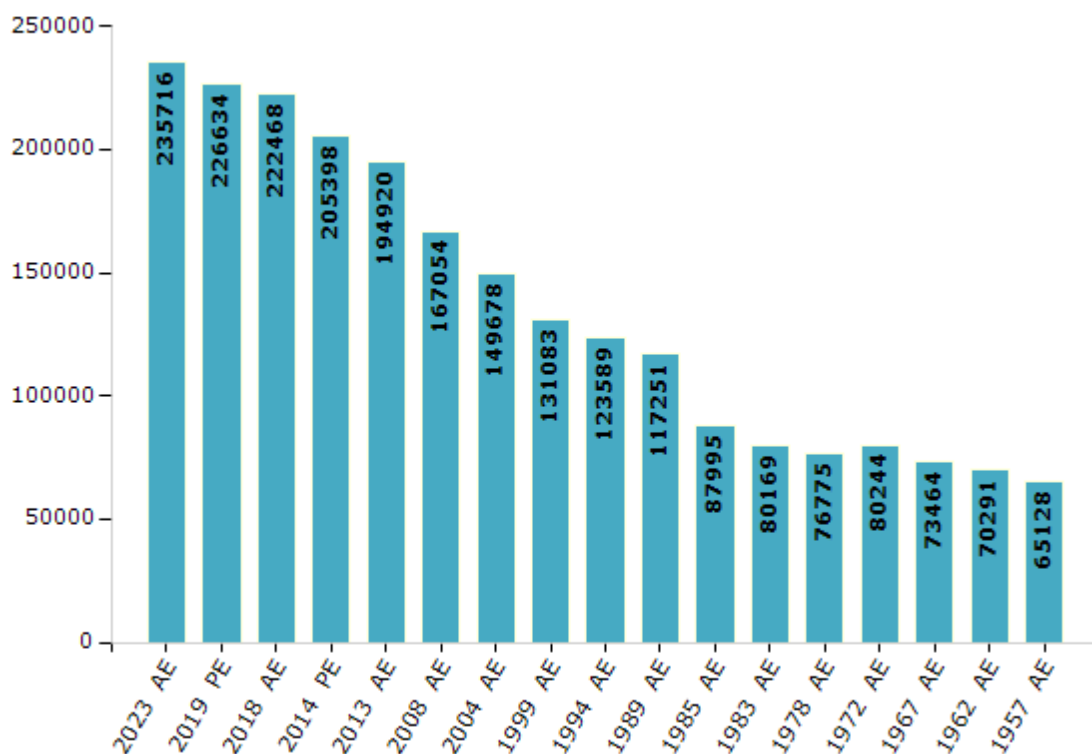


## Electoral Features

### Electors by Male & Female

Year	Male	Female	Others	Total	Year	Male	Female	Others	Total
2023 AE	115394	120319	3	235716	1999 AE	62939	68144	-	131083
2019 PE	110283	116350	1	226634	1994 AE	58891	64698	-	123589
2018 AE	108194	114260	14	222468	1989 AE	56753	60498	-	117251
2014 PE	97726	107657	15	205398	1985 AE	42179	45816	-	87995
2013 AE	91667	103247	6	194920	1983 AE	38427	41742	-	80169
2009 PE	-	-	-	-	1978 AE	37197	39578	-	76775
2008 AE	76205	90849	-	167054	1972 AE	38653	41591	-	80244
2004 PE	-	-	-	-	1967 AE	-	-	-	73464
2004 AE	71834	77844	-	149678	1962 AE	-	-	-	70291
1999 PE	-	-	-	-	1957 AE	-	-	-	65128

Number of Electors



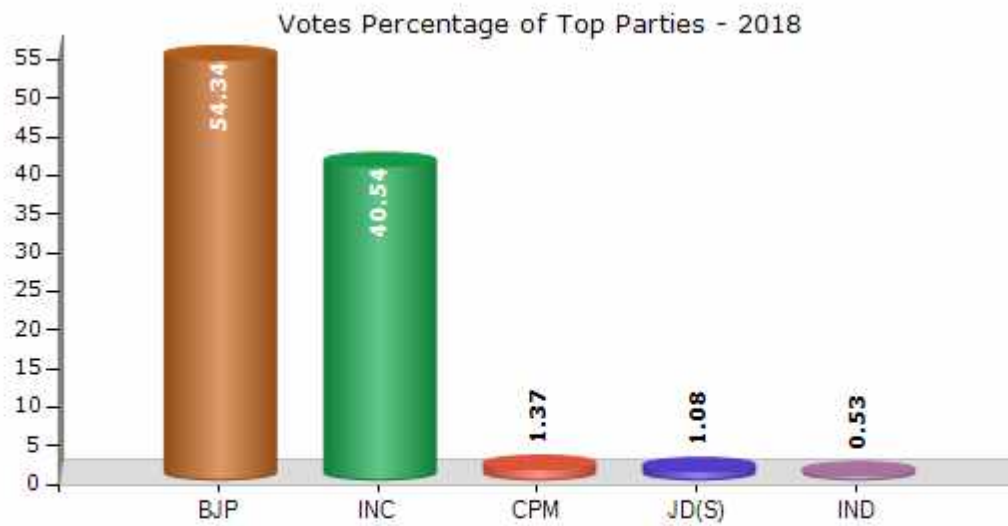
Note : AE : Assembly Election, PE : Assembly Segment of Parliamentary Election



## Historical Summary Election Results

### Summary Result of Assembly Election - 2018

Candidate Name	Party	Votes	Votes %
B. M. Sukumar Shetty	BJP	96029	54.34
K. Gopala Poojary	INC	71636	40.54
Suresh Kallagar	CPM	2415	1.37
Ravi Shetty	JD(S)	1911	1.08
B. Subramanya Bijoor	IND	941	0.53
H Suresh Poojari	IND	783	0.44
Abdul Hajeed	AIMEP	666	0.38
Marakala Manjunatha Basava	IND	401	0.23
Manjunatha Naik Kollur	IND	297	0.17
	NOTA	1647	0.93



## Polling Station Level Election Results

### Number and Name of Polling Stations (PS) (2023)

Number of Polling Stations	Name of Polling Stations	Number of Polling Stations	Name of Polling Stations
1	Gram Panchayat Office, Shiruru	22	Government Higher Primary School Tarapati (South Side)
2	Government Pre-Graduation College Shiruru	23	Government Junior Primary School Alamdur
3	Government Model Senior Primary School, Shiruru East Side	24	Govt Senior Primary School Maddodi
4	Government Model Senior Primary School Shirur (South Side)	25	Government Model Senior Primary School, Byndur, (Northern Part)
5	Anganwadi Center Dasanadi Shiruru	26	Government Model Senior Primary School, Byndur, (South Side)
6	Government Senior Primary School Melpankti Sirur (North Part)	27	Government Pre-Graduation College Byndur (Central)
7	Government Higher Primary School Upper Pankti Shirur (South Side)	28	Government Pre-Graduation College Byndur (East Side)
8	Government Junior Primary School Kalihitlu Shirur (Central Section)	29	Government Hindusthani Higher Primary School Bindur (North Part)
9	Government Hindustan Senior High School Shiruru (Northern Part)	30	Government Hindustani Higher Primary School, Byndur (South Side)
10	Government Higher Primary School Hadvinakone Shiruru (West Side)	31	Govt Senior Primary School Yadtare Byndur
11	Government Higher Primary School Hadavinakone Shiruru (East Side)	32	Government Higher Primary School Bada Bindur (East Side)
12	Government Higher Primary School Kesara Kodi Shiruru (South Side)	33	Government Senior Primary School Bada Bindur (North Part)
13	Govt Higher Primary School Kesar Kodi Shiruru (North Side)	34	Government Higher Primary School Bada Bindur (New Building)
14	Government Higher Primary School, Bappanabailu, Shirur	35	Sri Dharmasthala Manjunatheshwar Aided Senior Primary School, Mayyadi, Byndur (East Side)
15	Anganwadi Center Alvegadde Shiruru	36	Sri Dharmasthala Manjunatheshwar Aided Senior Primary School, Mayyadi, Byndur (West Side)
16	Government Junior Primary School Henberu Paduvari	37	Govt Higher Primary School Ganganadu Byndur
17	Govt Senior Primary School Dombe	38	Government Higher Primary School Taggarse (Liquor Section)
18	Government Senior Primary School Kotebagilu Paduvari	39	Government Higher Primary School Taggarse (New Building)
19	Holy Cross Senior Primary School Paduary (North East Side)	40	Govt Higher Primary School Maikala Taggarse (Liquor Section)
20	Holy Cross Senior Primary School Paduary (North Western Side)	41	Government Higher Primary School Maikala Taggarse (New Building)
21	Govt Higher Primary School Tarapati (North Part)	42	Govt Senior Primary School Yaljit (East Side)

Contd....

## Polling Station Level Election Results

### Polling Station-wise Votes Secured by Overall Top Five Parties in Byndoor Assembly in Assembly Election (AE) under Shimoga Parliamentary Constituency in Karnataka (2023)

Number of Polling Station	Winner - Gururaj Shetty Gantihole (BJP)	Runner-up - K. Gopal Poojary (INC)	3rd - Mansoor Ibrahim. (JD(S))	4th - H Suresh Poojari (IND)	5th - Prasad. S (UPJP)	NOTA	Other	Total Votes Secured
36	418	169	2	0	3	1	1	594
37	328	664	5	7	0	3	3	1010
38	321	240	3	0	1	3	2	570
39	278	342	2	2	1	1	3	629
40	317	378	4	1	8	4	3	715
41	225	287	1	4	1	3	1	522
42	541	451	9	6	4	9	7	1027
43	574	364	3	6	3	7	6	963
44	247	371	5	4	0	5	0	632
45	330	363	3	4	2	7	6	715
46	410	384	4	4	3	8	8	821
47	526	160	2	4	0	5	13	710
48	589	444	4	5	7	8	14	1071
49	683	447	2	3	5	17	8	1165
50	219	595	2	1	1	3	1	822
51	288	399	1	1	1	3	1	694
52	400	237	3	2	3	6	9	660
53	431	422	2	3	1	10	3	872
54	483	507	7	1	3	6	4	1011
55	409	551	4	1	3	4	4	976
56	555	192	6	0	0	4	8	765
57	497	284	5	7	2	6	5	806
58	436	358	6	12	4	8	3	827
59	369	270	2	1	0	6	5	653
60	397	344	3	2	2	0	1	749
61	350	523	2	4	0	12	2	893
62	551	259	7	5	4	7	4	837
63	440	255	0	1	2	10	8	716
64	305	209	4	1	0	2	4	525
65	248	264	1	2	4	2	2	523
66	415	236	4	2	3	8	4	672
67	429	324	5	4	0	4	4	770
68	513	301	1	2	2	5	3	827
69	485	300	4	2	4	8	7	810
70	677	361	1	2	7	4	4	1056

Contd....

## Polling Station Level Election Results

### Winner, Runner-up and 3rd Party Position & Winning Margin According to Polling Stations in Byndoor Assembly in Assembly Election (AE) under Shimoga Parliamentary Constituency in Karnataka (2023)

Polling Station Number	Winner Party	Winner Votes (%)	Runner-up Party	Runner-up Votes (%)	Winning Margin Votes (%)	Third Party	Third Party Votes (%)	Other Votes (%)
71	BJP	519 (62.68)	INC	288 (34.78)	231 (27.9)	IND (HSP)	5 (0.6)	16 (1.93)
72	INC	487 (49.09)	BJP	484 (48.79)	3 (0.3)	IND (HSP)	4 (0.4)	17 (1.71)
73	BJP	422 (56.87)	INC	299 (40.3)	123 (16.57)	UPJP	8 (1.08)	13 (1.75)
74	BJP	362 (57.28)	INC	253 (40.03)	109 (17.25)	JD(S)	3 (0.47)	14 (2.22)
75	BJP	288 (55.92)	INC	213 (41.36)	75 (14.56)	UPJP	4 (0.78)	10 (1.94)
76	INC	394 (49.5)	BJP	385 (48.37)	9 (1.13)	JD(S)	5 (0.63)	12 (1.51)
77	BJP	414 (52.21)	INC	362 (45.65)	52 (6.56)	UPJP	4 (0.5)	13 (1.64)
78	BJP	454 (54.96)	INC	357 (43.22)	97 (11.74)	JD(S)	4 (0.48)	11 (1.33)
79	BJP	547 (59.2)	INC	351 (37.99)	196 (21.21)	JD(S)	8 (0.87)	18 (1.95)
80	BJP	509 (53.19)	INC	416 (43.47)	93 (9.72)	IND (HSP)	12 (1.25)	20 (2.09)
81	BJP	334 (56.71)	INC	242 (41.09)	92 (15.62)	JD(S)	3 (0.51)	10 (1.7)
82	BJP	433 (64.34)	INC	229 (34.03)	204 (30.31)	IND (CG)	3 (0.45)	8 (1.19)
83	BJP	458 (48.26)	INC	452 (47.63)	6 (0.63)	JD(S)	10 (1.05)	29 (3.06)
84	BJP	393 (55.98)	INC	277 (39.46)	116 (16.52)	UPJP	7 (1)	25 (3.56)
85	INC	353 (53.08)	BJP	296 (44.51)	57 (8.57)	JD(S)	6 (0.9)	10 (1.5)
86	BJP	367 (53.89)	INC	299 (43.91)	68 (9.98)	UPJP	8 (1.17)	7 (1.03)
87	BJP	304 (52.69)	INC	260 (45.06)	44 (7.63)	UPJP	5 (0.87)	8 (1.39)
88	BJP	510 (48.94)	INC	510 (48.94)	0 (0)	JD(S)	5 (0.48)	17 (1.63)
89	BJP	436 (50.29)	INC	412 (47.52)	24 (2.77)	IND (HSP)	6 (0.69)	13 (1.5)
90	BJP	355 (54.95)	INC	268 (41.49)	87 (13.46)	IND (HSP)	4 (0.62)	19 (2.94)
91	BJP	428 (62.03)	INC	246 (35.65)	182 (26.38)	JD(S)	3 (0.43)	13 (1.88)
92	INC	448 (49.45)	BJP	428 (47.24)	20 (2.21)	UPJP	9 (0.99)	21 (2.32)
93	BJP	447 (57.83)	INC	316 (40.88)	131 (16.95)	IND (CG)	2 (0.26)	8 (1.03)
94	BJP	551 (51.93)	INC	481 (45.33)	70 (6.6)	JD(S)	5 (0.47)	24 (2.26)
95	BJP	444 (70.14)	INC	174 (27.49)	270 (42.65)	JD(S)	4 (0.63)	11 (1.74)
96	BJP	572 (61.51)	INC	336 (36.13)	236 (25.38)	UPJP	9 (0.97)	13 (1.4)
97	INC	381 (63.39)	BJP	200 (33.28)	181 (30.11)	UPJP	8 (1.33)	12 (2)
98	BJP	678 (68.28)	INC	296 (29.81)	382 (38.47)	UPJP	6 (0.6)	13 (1.31)
99	BJP	484 (67.32)	INC	225 (31.29)	259 (36.03)	UPJP	3 (0.42)	7 (0.97)
100	BJP	369 (60.69)	INC	211 (34.7)	158 (25.99)	IND (CG)	5 (0.82)	23 (3.78)
101	BJP	491 (50.51)	INC	458 (47.12)	33 (3.39)	JD(S)	9 (0.93)	14 (1.44)
102	BJP	428 (51.07)	INC	402 (47.97)	26 (3.1)	IND (HSP)	3 (0.36)	5 (0.6)
103	BJP	532 (52.05)	INC	470 (45.99)	62 (6.06)	JD(S)	13 (1.27)	7 (0.68)
104	BJP	454 (62.19)	INC	266 (36.44)	188 (25.75)	IND (HSP)	2 (0.27)	8 (1.1)
105	BJP	330 (56.31)	INC	246 (41.98)	84 (14.33)	JD(S)	2 (0.34)	8 (1.37)

Contd....

## Socio-Economic Amenities - Rural

### Access to Education Facilities

Particulars	Number of Village (% of Population)				
	Available	Not Available	If Not Available (Distance of Nearest Facility)		
			A	B	C
Govt. Primary School	65 (100)	0 (0)	0 (0)	0 (0)	0 (0)
Private Primary School	16 (42)	49 (58)	0 (0)	0 (0)	0 (0)
Govt. Middle School	60 (97)	5 (3)	4 (2)	1 (1)	0 (0)
Private Middle School	17 (44)	48 (56)	0 (0)	0 (0)	0 (0)
Govt. Secondary School	23 (54)	42 (46)	19 (18)	8 (9)	0 (0)
Private Secondary School	16 (39)	49 (61)	3 (5)	4 (4)	0 (0)
Govt. Senior Secondary School	10 (31)	55 (69)	11 (18)	14 (17)	7 (8)
Private Senior Secondary School	6 (19)	59 (81)	8 (7)	9 (10)	3 (3)
Govt. Arts and Science Degree College	3 (8)	62 (92)	6 (9)	31 (50)	18 (22)
Private Arts and Science Degree College	0 (0)	65 (100)	0 (0)	2 (5)	5 (6)
Govt. Engineering College	0 (0)	65 (100)	0 (0)	0 (0)	0 (0)
Private Engineering College	0 (0)	65 (100)	0 (0)	0 (0)	65 (100)
Govt. Medicine College	0 (0)	65 (100)	0 (0)	0 (0)	0 (0)
Private Medicine College	0 (0)	65 (100)	0 (0)	12 (23)	53 (77)
Govt. Management Institute	0 (0)	65 (100)	0 (0)	0 (0)	0 (0)
Private Management Institute	0 (0)	65 (100)	0 (0)	0 (0)	65 (100)
Govt. Polytechnic	0 (0)	65 (100)	0 (0)	2 (2)	3 (6)
Private Polytechnic	0 (0)	65 (100)	3 (3)	15 (22)	42 (67)
Govt. Vocational Training School/ITI	0 (0)	65 (100)	1 (1)	3 (4)	4 (7)
Private Vocational Training School/ITI	3 (7)	62 (93)	9 (12)	21 (36)	24 (33)
Govt. Non Formal Training Centre	0 (0)	65 (100)	0 (0)	1 (1)	4 (9)
Private Non Formal Training Centre	0 (0)	65 (100)	3 (3)	16 (23)	41 (63)
Govt. School For Disabled	0 (0)	65 (100)	0 (0)	0 (0)	4 (6)
Private School For Disabled	2 (3)	63 (97)	4 (4)	8 (10)	47 (76)
Government Others	3 (13)	62 (87)	3 (4)	15 (17)	36 (43)
Private Others	6 (20)	59 (80)	0 (0)	0 (0)	2 (3)

Note : Distance A : Less than 5 km; B : Between 5-10 km; C : 10+ km.; Source : Data Analysis is based on 2011 Census.

## DISCLAIMER

The Terms of Use and Disclaimer of Datanet India Private Limited (hereinafter referred to as "Datanet") for use of this analysis report of **Byndoor Assembly Constituency (Byndoor Vidhan Sabha)** :-

1. **Assembly Factbook™** is a Registered Trade Mark owned by Datanet.
2. All the maps are sketched and graphical representation only and have not been drawn to the scale and also not to represent the actual geographical area or boundary of the unit.
3. The data for the aforesaid analysis is based on authentic sources and has been culled from the various publications of Census, CSO and NSSO for district and block level data, various central and state government departments, Central & State Elections Commissions and the concerned Returning Officers' releases, Electoral Rolls, Election results and allied publications, internal assessment, surveys, estimates and analysis. Therefore, certain adjustment of data at micro level may have been done to arrive closer to the macro data.
4. Data have been provided on an "As Is" and "As AVAILABLE" basis
5. The colours shown in the maps or diagram and charts of a particular party, alliance or AC are indicative and do not represent them.
6. This publication which includes maps, sheets, graphs and data would be the property under copyright of Datanet only. The user may use these for its internal study, analysis and research purposes. It's public display, re-selling or any commercial uses by the user are not allowed.
7. Datanet has taken due care and caution in compilation and processing of data and allied information, but does not guarantee the accuracy, adequacy or completeness of any information/analysis and will be not responsible for any errors or omissions or for the results obtained from the use of such information/analysis.
8. All the contents for the publication have been culled from various authentic sources and Datanet reasonably believes such sources to be reliable, but does not make any representations, express or implied as to the accuracy or fitness of use of such information. The information or contents of the information/analysis do not constitute advice and should not be relied upon in making (or refraining from making) any decision. Any reliance placed upon the information provided by Datanet is the sole responsibility and strictly at the user's risk.
9. In no event will Datanet be liable for any damages (including, without limitation, damages for loss of business projects, or loss of profits) arising in contract, tort or otherwise from the use of or inability to use any of its contents, or from any action taken (or refrained from being taken) as a result of using the analysis or any of its contents. Datanet its directors, owners, editors, officials, employees, distributor and agents or any associate will not be liable for any errors in the information contained or any consequences arising from the use of the contents of the provided information/analysis.
10. If any provision of these terms and conditions is held invalid or illegal or unenforceable for any reason by any court of competent jurisdiction, such provision shall be severed and the remainder of provisions of the terms and conditions shall continue in full force and effect as if the Term of Use had been executed with the invalid, illegal or unenforceable provision eliminated.
11. If there are any discrepancies in the information provided, please bring it to attention of Datanet for suitable rectification measures.

**Buy Online This Complete Book At**  
**Datanet India eBooks Store**

[www.indiastatpublications.com](http://www.indiastatpublications.com)

or go directly at

[http://www.indiastatpublications.com/  
Assembly\\_factbook/Karnataka/Shimoga/ Byndoor](http://www.indiastatpublications.com/Assembly_factbook/Karnataka/Shimoga/Byndoor)

 **india**stat**elections**

