



Chhattisgarh

# Assembly Factbook™

Masturi Assembly Constituency



Key Electoral Data of Masturi  
Assembly Constituency (Vidhan Sabha)

Chhattisgarh  
**Assembly Factbook**<sup>TM</sup>  
Masturi Assembly Constituency



Masturi Vidhan Sabha

## **Editor & Director**

Dr. R.K. Thukral

## **Research Editor**

Dr. Shafeeq Rahman

## **Compiled, Researched and Published by Datanet India Pvt. Ltd.**

D-100, 1st Floor,

Okhla Industrial Area, Phase-I,  
New Delhi- 110020.

Ph.: 91-11- 43580781-84

Email : support@indiastatpublications.com

Website : www.indiastatelections.com

## **Online Book Store :**

www.indiastatpublications.com

**Report No. :** AFB/CG-32-0125

**ISBN :** 978-93-87312-70-8

**First Edition :** January, 2018

**Eighth Updated Edition :** January, 2025

**Price :** Rs. 11500/-

US\$ 310

**© Datanet India Pvt. Ltd.**

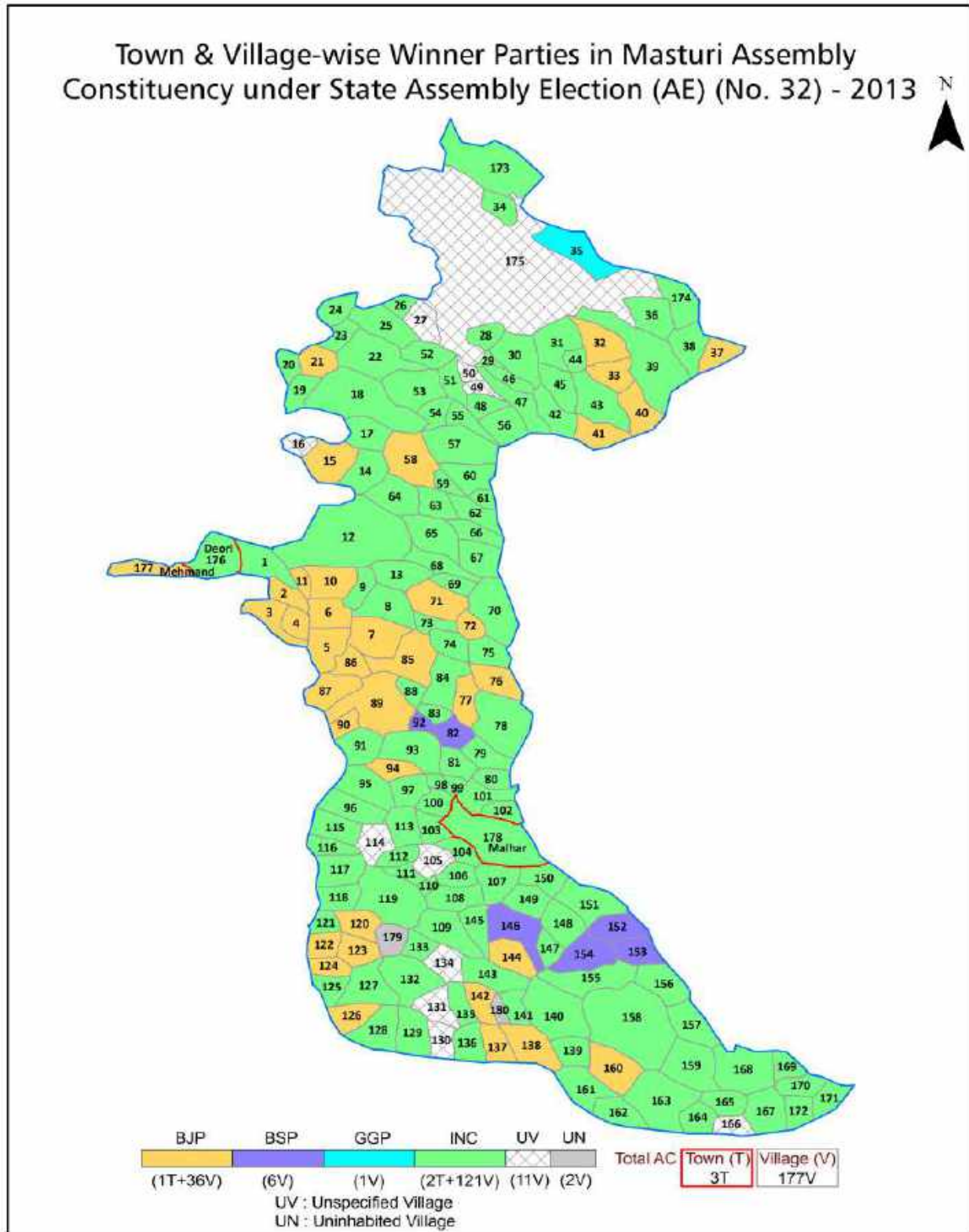
All rights reserved. No part of this book may be reproduced, stored in a retrieval system or transmitted in any form or by any means, mechanical photocopying, photographing, scanning, recording or otherwise without the prior written permission of the publisher. Please refer to Disclaimer at page no. 244 for the use of this publication.

Printed in India

# Contents

No.	Particulars	Page No.
	<b>Introduction</b>	
1	Assembly Constituency - (Vidhan Sabha) at a Glance   Features of Assembly as per Delimitation Commission of India (2008)	1-2
	<b>Location and Political Maps</b>	
2	Location Map   Boundaries of Assembly Constituency - (Vidhan Sabha in District   Boundaries of Assembly Constituency under Parliamentary Constituency - (Lok Sabha)   Town & Village-wise Winner Parties- 2024, 2023, 2019, 2018, 2014, 2013, 2009 and 2008	3-11
	<b>Administrative Setup (2011)</b>	
3	District   Sub-district   Towns   Villages   Inhabited Villages   Uninhabited Villages   Village Panchayat   Intermediate Panchayat	12-22
	<b>Demographics (2011)</b>	
4	Population   Households   Rural/Urban Population   Towns and Villages by Population Size   Sex Ratio (Total & 0-6 Years)   Religious Population   Social Population   Literacy Rate	23-24
	<b>Electoral Features</b>	
5	Important Dates of Last Elections Held   Electors by Gender   Service Electors   Voters   Voters Turnout   Polling Stations & Average Number of Electors per Polling Station   Electors by Age Group   Present Elected Representatives	25-30
	<b>Historical Summary Election Results</b>	
6	Vote Share of Major Parties   Winning Margin (Number & Percentage   Polarity of Parties   Summary Result of Assembly Segment of Parliamentary Elections 2024, 2019, 2014, 2009 and 2004   Summary Result of Assembly Elections 2023, 2018, 2013, 2008 and 2003	31-42
	<b>Polling Station Level Election Results</b>	
7	Name and Number of Polling Station 2024, 2023, 2019, 2018, 2014, 2013, 2009 and 2008   Polling Station-wise Electors, Voters & Voters Turnout 2024, 2023, 2019, 2018, 2014, 2013, 2009 and 2008   Polling Station wise Elections Results 2024, 2023, 2019, 2018, 2014, 2013, 2009 and 2008	43-222
	<b>Share of Assembly Constituency</b>	
8	Share of Assembly Constituency - (Vidhan Sabha) in State, District and Parliamentary Constituency - (Lok Sabha)	223
	<b>Socio-Economic Amenities (2011)</b>	
9	Access to Administrative Units   Agricultural, Manufacturing and Industrial Commodities   Demographic Indicators   Education   Health & Manpower   Drinking Water Supply   Sanitation   Entertainment and Recreations Infrastructure   Power   Food Allocation Distribution and Marketing of Agriculture Commodities Infrastructure   Transport and Road Infrastructure   Communication   Banking and Financial Services   Land Use   Irrigation Source	225-239
10	<b>Abbreviation &amp; Sources</b>	241-242
11	<b>Disclaimer</b>	244

Location & Political Map



## Administrative Setup

### List of Village Panchayat & Intermediate Panchayat (Block) Name - 2011

Village Name	Village Panchayat Name	Intermediate Panchayat Name
Adrali	Nirtu	Masturi
Akola	Chauha	Masturi
Amakoni	Amgaon	Masturi
Amaldiha	Amaldiha	Masturi
Amgaon	Amgaon	Masturi
Ankdih	Koni	Masturi
Bahatara	Bahatara	Masturi
Bakarkuda	Bakarkuda	Masturi
Bamhani Kalan	Machkhanda	Masturi
Baniyadih	Baniyadih	Masturi
Bareli	Kauwatal	Masturi
Basaha	Basaha	Masturi
Basantpur	Basantpur	Masturi
Belha	Sulauni	Masturi
Belpan	Kokadi	Masturi
Beltukari	Beltukari	Masturi
Betari	Jaitpur	Masturi
Bhadaura	Bhadaura	Masturi
Bhadha	Manikchouri	Masturi
Bhagwanpali	Dhangawan	Masturi
Bhanesar	Bhanesar	Masturi
Bharari	Bharari	Masturi
Bharuwadih	Tharakpur	Masturi
Bhatchaunra	Bhatchaunra	Masturi
Bhauradih	Dhaniya	Masturi
Bhelai	Bhelai	Masturi
Bhilauni	Bhilauni	Masturi
Bhurkunda	Godadih	Masturi
Bidyadih	Danganiya	Masturi

Contd....

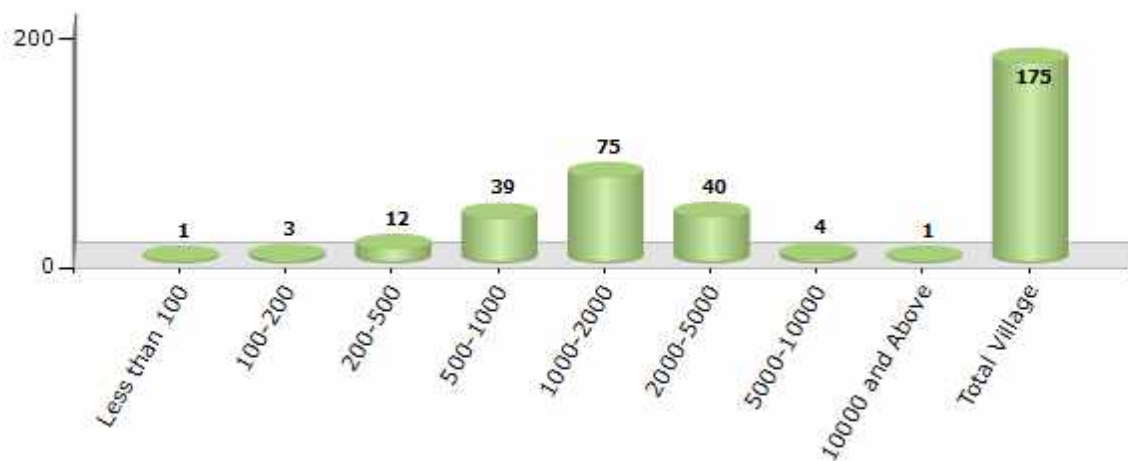


Demographic

Number of Villages by Population Size - 2011

Less than 100	100-200	200-500	500-1000	1000-2000	2000-5000	5000-10000	10000 and Above	Total Village
1	3	12	39	75	40	4	1	175

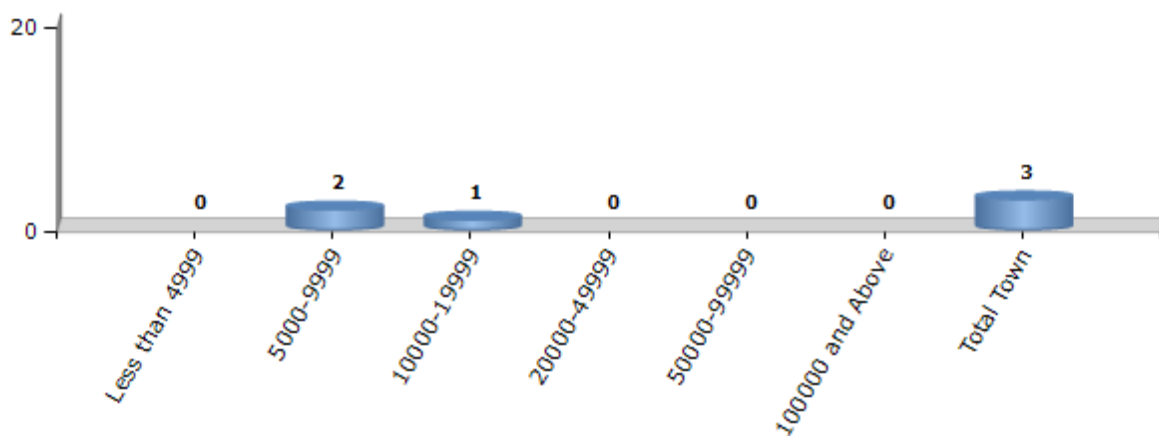
Number of Villages by Population Size - 2011



Number of Towns by Population Size - 2011

Less than 4999	5000-9999	10000-19999	20000-49999	50000-99999	100000 and Above	Total Town
0	2	1	0	0	0	3

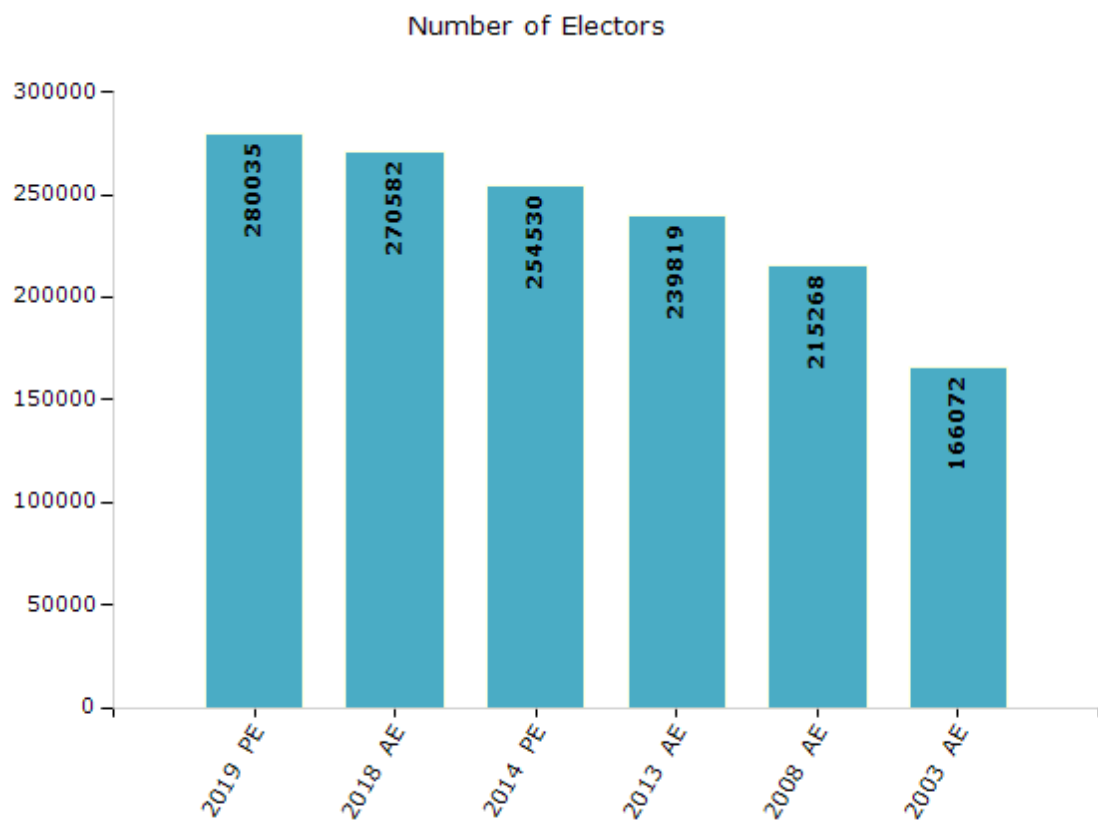
Number of Towns by Population Size - 2011



## Electoral Features

### Electoral by Male & Female

Year	Male	Female	Others	Total	Year	Male	Female	Others	Total
2019 PE	142763	137236	36	280035	2009 PE	-	-	-	-
2018 AE	138175	132371	36	270582	2008 AE	109711	105557	-	215268
2014 PE	131680	122850	0	254530	2004 PE	-	-	-	-
2013 AE	124734	115085	0	239819	2003 AE	84498	81574	-	166072



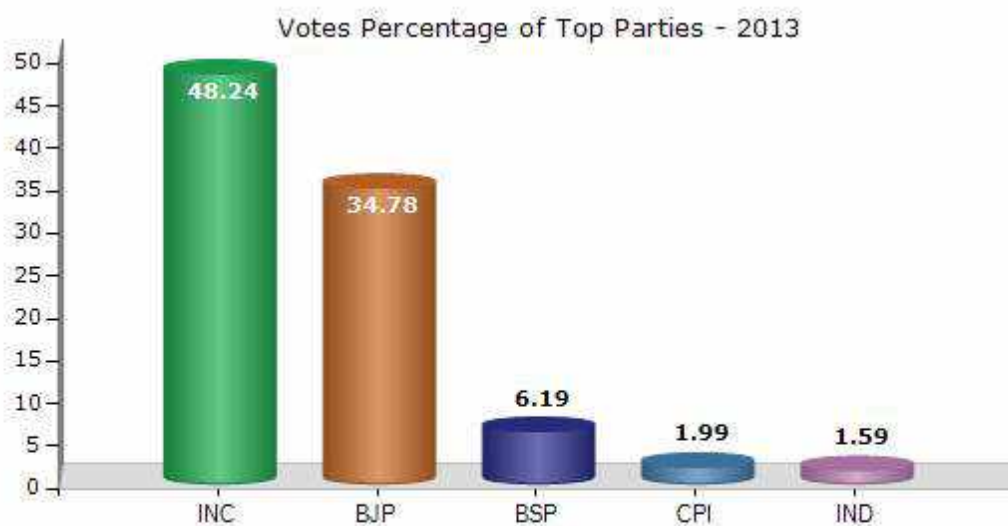
Note : AE : Assembly Election, PE : Assembly Segment of Parliamentary Election



## Historical Summary Election Results

### Summary Result of Assembly Election - 2013

Candidate Name	Party	Votes	Votes %
Dilip Lahariya	INC	86509	48.24
Dr. Krishanmurti Bandhi	BJP	62363	34.78
Eng.T. R .Joshi	BSP	11099	6.19
Ishwar Singh Suryawanshi	CPI	3565	1.99
Rajeshwar Bhargava	IND	2847	1.59
Anil Kumar Chouhan	GGP	2698	1.5
Bhushan Prasad Banjare	IND	1619	0.9
Baran Lal Kariyare	IND	1599	0.89
Ramayan Lal Kurrey	SP	956	0.53
Kedarnath Ghritlahre	BASMM	848	0.47
Eng.Ramfal Mandrey	PRCP	619	0.35
Rashmi Kurrey	LJP	582	0.32
Kalam Prasad Soni	NPEP	502	0.28
	NOTA	3518	1.96



## Polling Station Level Election Results

### Number and Name of Polling Stations (PS) (2018)

Number of Polling Stations	Name of Polling Stations	Number of Polling Stations	Name of Polling Stations
1	Machakhanda	22	Sonthi
2	Pondi	23	Pipranar
3	Pondi	24	Madai
4	Pondi	25	Madai
5	Bamhanikalan	26	Kuli
6	Khodhra	27	Unni
7	Jevra	28	Khamhriya
8	Jevra	29	Khamariya
9	Jevra	30	Lutra
10	Adarali	31	Lutra
11	Kanai	32	Dhaniya
12	Nirtoo	33	Dhaniya
13	Nirtoo	34	Bhouradih
14	Udangi	35	Baniyadih
15	Udangi	36	Juhli
16	Basha	37	Kaimadih
17	Kukda	38	Kaarichhapar
18	Kukda	39	Tharakpur
19	Bitkula	40	Hindadih
20	Bitkula	41	Nargoda
21	Sonthi	42	Nargoda

Contd....

Polling Station Level Election Results

Polling Station-wise Votes Secured by Overall Top Five Parties in Masturi Assembly in Assembly Election (AE) under Bilaspur Parliamentary Constituency in Chhattisgarh (2018)

Number of Polling Station	Winner - Dr. Krishna Murti Bandhi (BJP)	Runner-up - Jayendra Singh Patle (BSP)	3rd - Dilip Lahariya (INC)	4th - Hira Gandharw (IND)	5th - Sanjay Tondan (IND)	NOTA	Other	Total Votes Secured
36	132	202	376	13	7	16	36	782
37	78	46	196	6	5	9	4	344
38	66	152	145	3	4	3	21	394
39	197	30	266	6	12	24	15	550
40	131	253	483	6	6	8	25	912
41	235	135	298	2	0	8	10	688
42	221	45	351	3	4	10	19	653
43	70	55	118	0	1	2	6	252
44	300	65	217	0	4	8	4	598
45	233	118	155	1	2	4	4	517
46	271	10	204	3	1	10	2	501
47	232	97	146	7	3	9	8	502
48	309	31	217	2	3	11	18	591
49	203	47	245	4	9	6	11	525
50	307	16	259	4	7	13	9	615
51	344	12	192	2	3	5	10	568
52	176	149	180	0	1	1	3	510
53	106	271	270	4	2	3	6	662
54	47	332	67	2	1	3	9	461
55	94	236	87	6	3	19	22	467
56	175	111	206	1	3	4	12	512
57	241	42	189	2	1	10	10	495
58	106	12	57	0	0	2	7	184
59	138	22	77	0	0	5	9	251
60	312	50	289	3	7	12	24	697
61	230	19	259	3	6	22	8	547
62	191	27	279	7	5	10	10	529
63	303	7	295	1	3	6	7	622
64	120	19	149	2	1	2	3	296
65	267	57	453	9	10	10	14	820
66	190	93	247	2	2	5	10	549
67	277	71	206	4	4	16	6	584
68	94	104	246	4	6	4	6	464
69	250	8	223	4	3	24	8	520
70	212	65	165	3	3	7	16	471

Contd....

## Polling Station Level Election Results

### Winner, Runner-up and 3rd Party Position & Winning Margin According to Polling Stations in Masturi Assembly in Assembly Election (AE) under Bilaspur Parliamentary Constituency in Chhattisgarh (2018)

Polling Station Number	Winner Party	Winner Votes (%)	Runner-up Party	Runner-up Votes (%)	Winning Margin Votes (%)	Third Party	Third Party Votes (%)	Other Votes (%)
71	BJP	488 (55.45)	INC	269 (30.57)	219 (24.88)	BSP	56 (6.36)	67 (7.61)
72	INC	352 (45.3)	BJP	289 (37.19)	63 (8.11)	BSP	98 (12.61)	38 (4.89)
73	BSP	453 (58.08)	BJP	188 (24.1)	265 (33.98)	INC	113 (14.49)	26 (3.33)
74	BJP	547 (70.49)	INC	151 (19.46)	396 (51.03)	BSP	61 (7.86)	17 (2.19)
75	INC	367 (46.87)	BJP	287 (36.65)	80 (10.22)	BSP	91 (11.62)	38 (4.85)
76	BJP	319 (60.19)	INC	184 (34.72)	135 (25.47)	APOI	4 (0.75)	23 (4.34)
77	BJP	302 (45.21)	INC	281 (42.07)	21 (3.14)	BSP	41 (6.14)	44 (6.59)
78	BJP	370 (53.7)	INC	284 (41.22)	86 (12.48)	BSP	11 (1.6)	24 (3.48)
79	BSP	333 (46.77)	INC	252 (35.39)	81 (11.38)	BJP	97 (13.62)	30 (4.21)
80	BSP	342 (47.63)	BJP	233 (32.45)	109 (15.18)	INC	112 (15.6)	31 (4.32)
81	BJP	352 (51.46)	INC	234 (34.21)	118 (17.25)	BSP	48 (7.02)	50 (7.31)
82	INC	334 (44.95)	BJP	312 (41.99)	22 (2.96)	BSP	50 (6.73)	47 (6.33)
83	BSP	325 (43.22)	BJP	228 (30.32)	97 (12.9)	INC	130 (17.29)	69 (9.18)
84	BJP	133 (43.18)	INC	106 (34.42)	27 (8.76)	BSP	41 (13.31)	28 (9.09)
85	BSP	215 (42.07)	BJP	162 (31.7)	53 (10.37)	INC	114 (22.31)	20 (3.91)
86	INC	230 (44.75)	BJP	202 (39.3)	28 (5.45)	BSP	39 (7.59)	43 (8.37)
87	BJP	306 (39.38)	INC	248 (31.92)	58 (7.46)	BSP	147 (18.92)	76 (9.78)
88	BJP	285 (45.38)	INC	168 (26.75)	117 (18.63)	BSP	144 (22.93)	31 (4.94)
89	BSP	188 (40.6)	BJP	148 (31.97)	40 (8.63)	INC	79 (17.06)	48 (10.37)
90	BSP	325 (75.41)	BJP	44 (10.21)	281 (65.2)	INC	36 (8.35)	26 (6.03)
91	INC	372 (45.59)	BJP	276 (33.82)	96 (11.77)	BSP	138 (16.91)	30 (3.68)
92	BSP	382 (48.6)	BJP	204 (25.95)	178 (22.65)	INC	119 (15.14)	81 (10.31)
93	BJP	451 (62.64)	BSP	105 (14.58)	346 (48.06)	INC	98 (13.61)	66 (9.17)
94	BSP	340 (64.15)	INC	94 (17.74)	246 (46.41)	BJP	71 (13.4)	25 (4.72)
95	BSP	248 (54.39)	INC	139 (30.48)	109 (23.91)	BJP	62 (13.6)	7 (1.54)
96	BJP	345 (46.31)	INC	241 (32.35)	104 (13.96)	BSP	122 (16.38)	37 (4.97)
97	BSP	277 (55.62)	BJP	133 (26.71)	144 (28.91)	INC	61 (12.25)	27 (5.42)
98	BJP	316 (55.44)	BSP	138 (24.21)	178 (31.23)	INC	96 (16.84)	20 (3.51)
99	INC	166 (44.62)	BJP	149 (40.05)	17 (4.57)	BSP	27 (7.26)	30 (8.06)
100	BJP	202 (46.33)	INC	193 (44.27)	9 (2.06)	BSP	17 (3.9)	24 (5.5)
101	BJP	298 (57.98)	INC	184 (35.8)	114 (22.18)	BSP	12 (2.33)	20 (3.89)
102	BJP	188 (49.21)	INC	164 (42.93)	24 (6.28)	BSP	14 (3.66)	16 (4.19)
103	INC	292 (56.81)	BJP	177 (34.44)	115 (22.37)	BSP	13 (2.53)	32 (6.23)
104	BSP	205 (43.71)	INC	131 (27.93)	74 (15.78)	BJP	108 (23.03)	25 (5.33)
105	BSP	498 (74.33)	BJP	73 (10.9)	425 (63.43)	INC	62 (9.25)	37 (5.52)

Contd....

## Socio-Economic Amenities - Rural

### Access to Education Facilities

Particulars	Number of Village (% of Population)				
	Available	Not Available	If Not Available (Distance of Nearest Facility)		
			A	B	C
Govt. Primary School	171 (99)	4 (1)	1 (0)	0 (0)	0 (0)
Private Primary School	27 (31)	148 (69)	0 (0)	0 (0)	0 (0)
Govt. Middle School	110 (82)	65 (18)	52 (14)	4 (1)	0 (0)
Private Middle School	26 (29)	149 (71)	1 (0)	0 (0)	0 (0)
Govt. Secondary School	25 (30)	150 (70)	69 (33)	34 (14)	2 (1)
Private Secondary School	27 (24)	148 (76)	12 (4)	4 (2)	0 (0)
Govt. Senior Secondary School	17 (23)	158 (77)	42 (23)	42 (18)	5 (2)
Private Senior Secondary School	18 (14)	157 (86)	11 (4)	4 (1)	0 (0)
Govt. Arts and Science Degree College	2 (6)	173 (94)	13 (10)	31 (22)	40 (19)
Private Arts and Science Degree College	1 (1)	174 (99)	10 (4)	16 (7)	19 (9)
Govt. Engineering College	0 (0)	175 (100)	2 (1)	1 (1)	96 (54)
Private Engineering College	2 (2)	173 (98)	1 (1)	8 (7)	15 (7)
Govt. Medicine College	0 (0)	175 (100)	5 (2)	6 (6)	133 (74)
Private Medicine College	0 (0)	175 (100)	0 (0)	0 (0)	4 (3)
Govt. Management Institute	0 (0)	175 (100)	1 (0)	4 (5)	111 (61)
Private Management Institute	0 (0)	175 (100)	0 (0)	0 (0)	12 (7)
Govt. Polytechnic	0 (0)	175 (100)	0 (0)	4 (5)	124 (68)
Private Polytechnic	0 (0)	175 (100)	0 (0)	0 (0)	4 (3)
Govt. Vocational Training School/ITI	2 (2)	173 (98)	15 (7)	28 (17)	83 (44)
Private Vocational Training School/ITI	0 (0)	175 (100)	1 (1)	0 (0)	3 (2)
Govt. Non Formal Training Centre	0 (0)	175 (100)	2 (1)	6 (4)	37 (21)
Private Non Formal Training Centre	0 (0)	175 (100)	0 (0)	0 (0)	3 (2)
Govt. School For Disabled	0 (0)	175 (100)	0 (0)	2 (1)	110 (62)
Private School For Disabled	0 (0)	175 (100)	0 (0)	0 (0)	3 (2)
Government Others	1 (1)	174 (99)	0 (0)	0 (0)	0 (0)
Private Others	0 (0)	175 (100)	0 (0)	0 (0)	0 (0)

Note : Distance A : Less than 5 km; B : Between 5-10 km; C : 10+ km.; Source : Data Analysis is based on 2011 Census.

## DISCLAIMER

The Terms of Use and Disclaimer of Datanet India Private Limited (hereinafter referred to as "Datanet") for use of this analysis report of **Masturi Assembly Constituency (Masturi Vidhan Sabha) :-**

1. **Assembly Factbook™** is a Registered Trade Mark owned by Datanet.
2. All the maps are sketched and graphical representation only and have not been drawn to the scale and also not to represent the actual geographical area or boundary of the unit.
3. The data for the aforesaid analysis is based on authentic sources and has been culled from the various publications of Census, CSO and NSSO for district and block level data, various central and state government departments, Central & State Elections Commissions and the concerned Returning Officers' releases, Electoral Rolls, Election results and allied publications, internal assessment, surveys, estimates and analysis. Therefore, certain adjustment of data at micro level may have been done to arrive closer to the macro data.
4. Data have been provided on an "As Is" and "As AVAILABLE" basis
5. The colours shown in the maps or diagram and charts of a particular party, alliance or AC are indicative and do not represent them.
6. This publication which includes maps, sheets, graphs and data would be the property under copyright of Datanet only. The user may use these for its internal study, analysis and research purposes. It's public display, re-selling or any commercial uses by the user are not allowed.
7. Datanet has taken due care and caution in compilation and processing of data and allied information, but does not guarantee the accuracy, adequacy or completeness of any information/analysis and will be not responsible for any errors or omissions or for the results obtained from the use of such information/analysis.
8. All the contents for the publication have been culled from various authentic sources and Datanet reasonably believes such sources to be reliable, but does not make any representations, express or implied as to the accuracy or fitness of use of such information. The information or contents of the information/analysis do not constitute advice and should not be relied upon in making (or refraining from making) any decision. Any reliance placed upon the information provided by Datanet is the sole responsibility and strictly at the user's risk.
9. In no event will Datanet be liable for any damages (including, without limitation, damages for loss of business projects, or loss of profits) arising in contract, tort or otherwise from the use of or inability to use any of its contents, or from any action taken (or refrained from being taken) as a result of using the analysis or any of its contents. Datanet its directors, owners, editors, officials, employees, distributor and agents or any associate will not be liable for any errors in the information contained or any consequences arising from the use of the contents of the provided information/analysis.
10. If any provision of these terms and conditions is held invalid or illegal or unenforceable for any reason by any court of competent jurisdiction, such provision shall be severed and the remainder of provisions of the terms and conditions shall continue in full force and effect as if the Term of Use had been executed with the invalid, illegal or unenforceable provision eliminated.
11. If there are any discrepancies in the information provided, please bring it to attention of Datanet for suitable rectification measures.

**Get Complete Book**  
**At Datanet India eBooks Store**

[www.datanetindia-ebooks.com](http://www.datanetindia-ebooks.com)

or go directly at

[http://www.datanetindia-  
ebooks.com/Assembly\\_factbook/Chhattisgarh/Bilaspur/  
Masturi](http://www.datanetindia-ebooks.com/Assembly_factbook/Chhattisgarh/Bilaspur/Masturi)



 **india**stat**elections**

